

Economist/Tribune

showcase



DEBBI LEE JEFFERSON



REAL ESTATE LTD. REALTOR 477-2223



HOUSE, BARN, GARAGE, WORKSHOP - 2.25 AC.

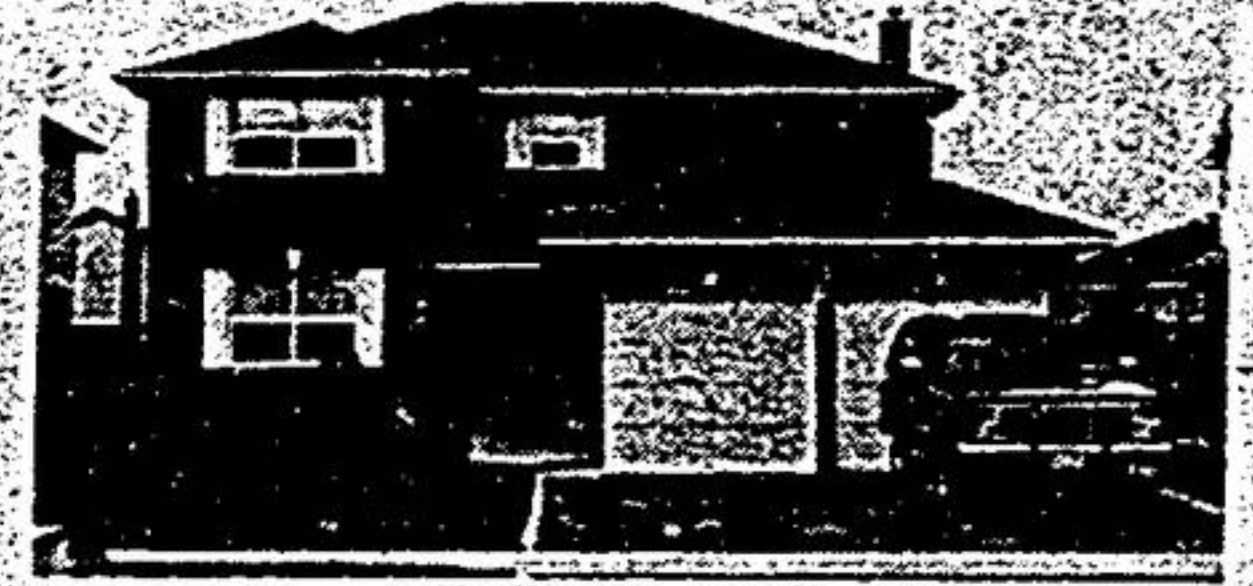
Ballantrae - enjoy the winter in this cozy 3 bedroom home with the Vivian Forest in your backyard to ski, ski-doo or ride your horses. All the necessities are included here — main floor family and laundry room, 2 washrooms, franklin stove, 3 appliances and much more. Call now for an appointment \$265,000 477-2223.



CATHI LEE



REAL ESTATE LTD. REALTOR 477-2223



MARKHAM BEAUTY

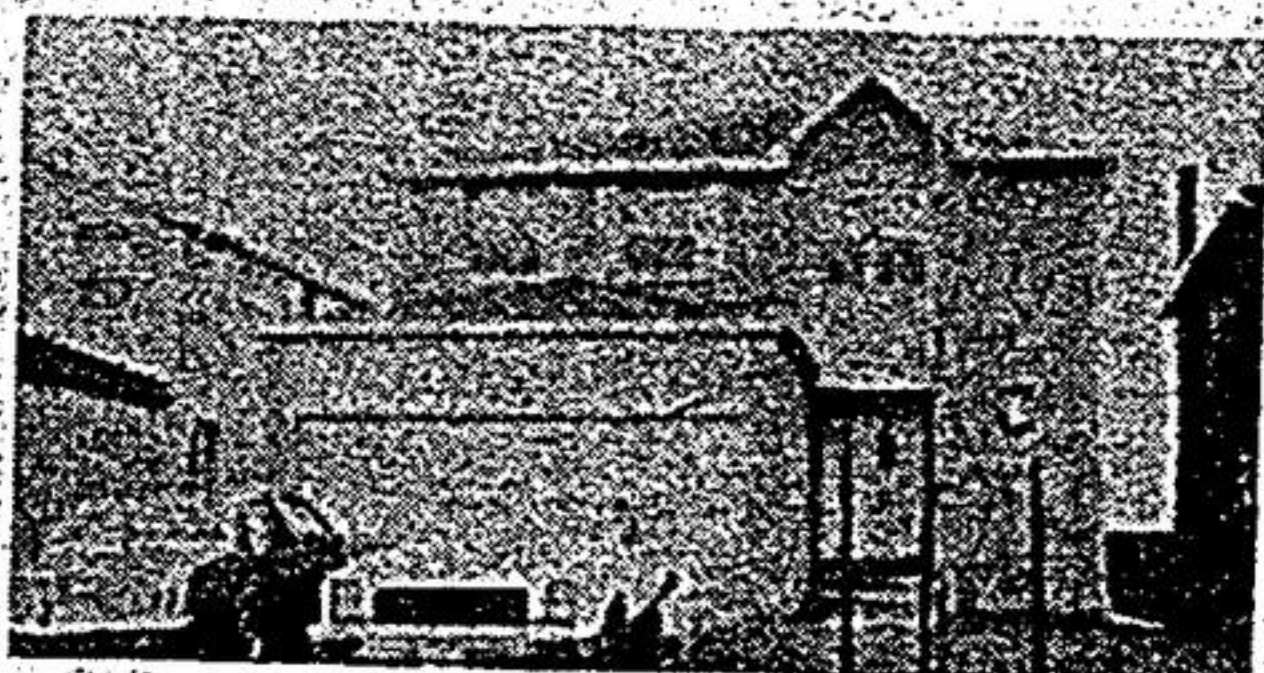
Reduced to \$245,000.00. Spotless four bedroom home with huge master ensuite and walk-in closet. Neutral decor with central air and central vac. Two walk-outs. Close to schools and transportation. MAIL DELIVERY too!!! Call 477-2223.



CATHI LEE



REAL ESTATE LTD. REALTOR 477-2223



UNIONVILLE - REDUCED TO \$235,000

Lovely three bedroom home on a crescent. Br-malea built, open concept with main floor family with fireplace. Extra large lot. Very well kept. Only one year old. Call 477-2223.



CATHI LEE



REAL ESTATE LTD. REALTOR 477-2223

BUILDING LOT 2 ACRES 5 MINUTES TO UNIONVILLE Great lot to build your new home, the road is in, just bring on your builder. 5 minutes to Hwy. 404. Call 477-2223.



DON GELDART



GERRY MEHARG LTD. Member Broker



BUSINESS OPPORTUNITY IN GOODWOOD

Excellent high traffic location. Business plus well maintained living quarters listed at \$330,000. Call Don Geldart 640-3131.



DON GELDART



GERRY MEHARG LTD. Member Broker



IN SEARCH OF EXCELLENCE 1.8 ACRES STOUFFVILLE

\$329,000

Absolutely stunning 3 bdrm. bung. prof. decor. large eat-in kit. with loads of cupboards, spacious liv. & din. rooms, fin. basement with beautiful brick fireplace. Call Don Geldart 640-3131.



LORRIE LEFLER



GERRY MEHARG LTD. Member Broker



COUNTRY LIVING CLOSE TO TOWN

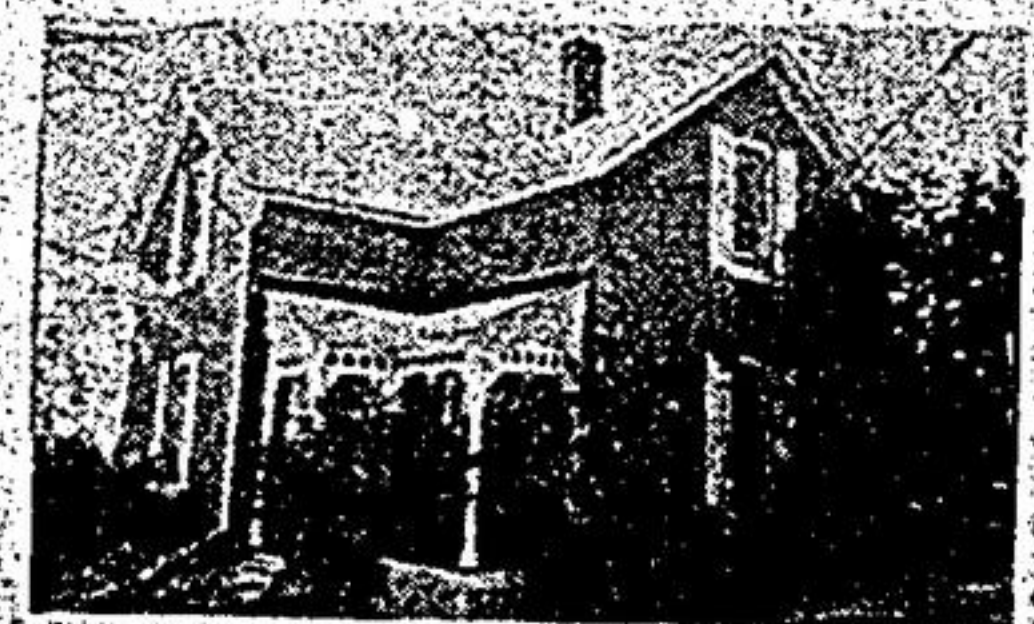
4 br. family home on 1/2 acre Uxbridge fin. rec. rm. fireplace w/o to fenced inground pool 1750 + sq. ft. plan now for the new year. Call Lorrie Lefler. VIP 640-2600 Res. 852-9214.



GERRY MICHAEL



FAMILY TRUST CORPORATION



COZY UP, IN TOWN UXBRIDGE

\$179,900 3 bdrm. Century on full town services, lg. bright country kit. w/o mature treed lot. Gerry Michael 294-1372 Ext. 243.



GERRY MICHAEL



FAMILY TRUST CORPORATION



DON'T WAIT FOR ST. NICK ON THIS ONE!!!

\$345,000 pastoral 10 ac. south Uxbridge for the family that wants it all!! Fam. rm. fireplace, huge games rm. modern eat. kit., 4 br. finished workshop w/o inground pl. Gerry Michael 294-1372 ext. 243.



GERRY MICHAEL



FAMILY TRUST CORPORATION



BEST BUY UXBRIDGE WHY???

In town brick bungalow, hardwd. fls. eat in kit. finished rec. rm. built-in bar & frig. stone-firepl. landscaping, paved drive \$159,900. Gerry Michael 294-1372 Ext. 243.



GILA ALALOUF



FAMILY TRUST CORPORATION



AFFORDABLE 1/2 ACRE IN TOWN \$159,900

Big & bright 4 bdrm. semi, eat-in kit., 2 washrms, full basement, with sep. entrance, walkout to beautiful treed yard. Call Gila Alalouf 640-2082.



SHEILA DISLEY



FAMILY TRUST CORPORATION



CENTURY HOME UXBRIDGE

\$187,000 yellow brick 4 bdrms. lg. lot on maple lined ave. 2 porches original gingerbread and trim Family Trust Corp. Realtor Sheila Disley 852-3443, 294-1372, 473-2963.