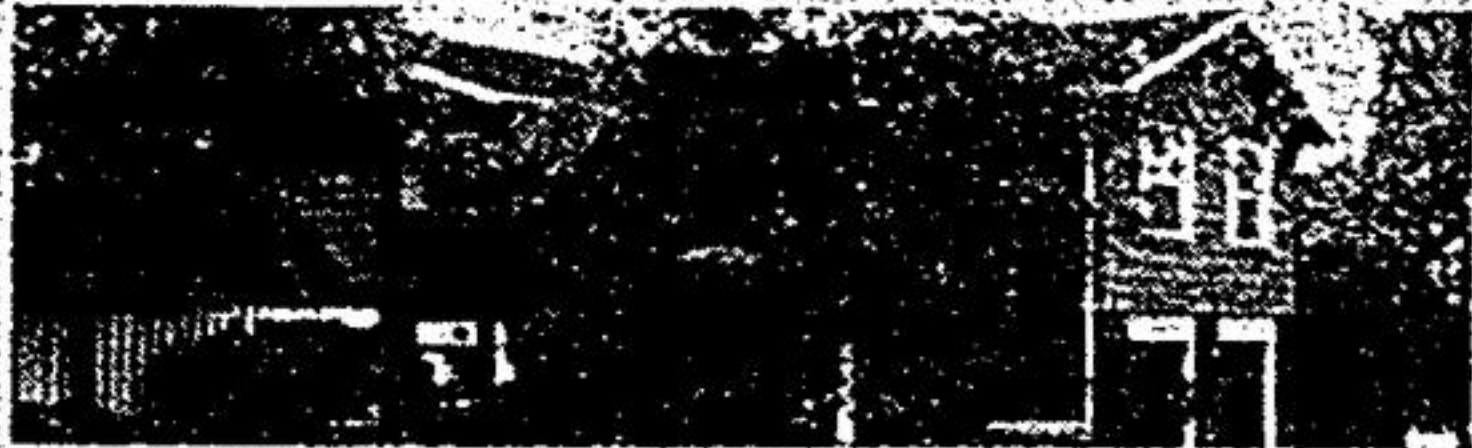


THE SIGN OF THE TIMES



CENTRAL MARKHAM COMMERCIAL OFFICE SPACE FOR LEASE

2050 sq. ft. on ground floor suitable for any office or professional use. Can be divided. For full details call Ross Kent 477-0075.



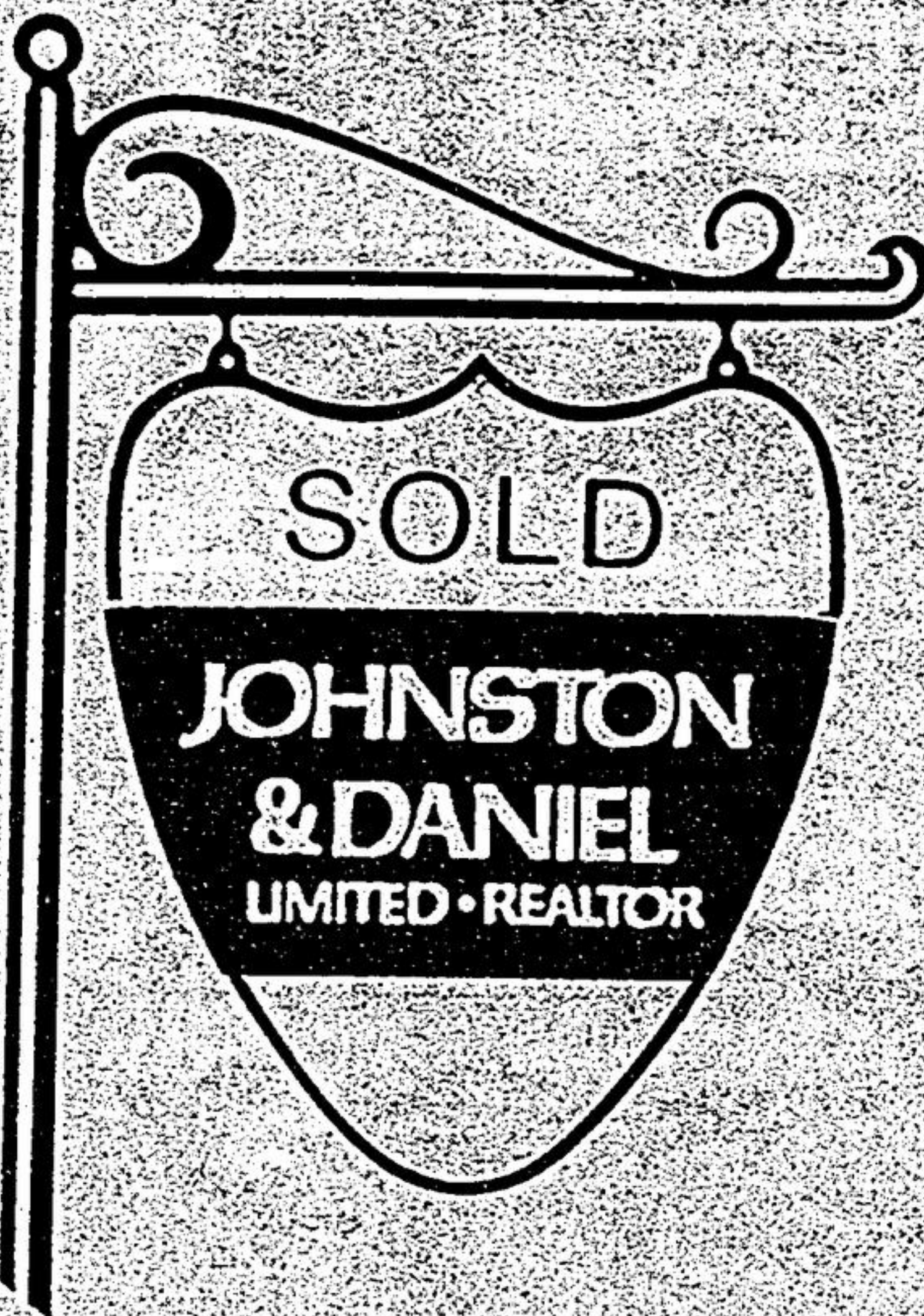
UNIONVILLE RAISED BUNGALOW

We have an immaculate 8 room home on a large 75 ft. x 125 ft. lot in Town. Many plusses including two fireplaces, central-air, central-vac and electronic air cleaner. It's on a quiet court with mature landscaping and trees. Asking price \$247,500. For full details call Ross Kent 477-0075.



YONGE & HIGHWAY #7 - CUSTOM BUILT

New custom built home with all 2 x 6 construction on a mature lot with 4 bdrms, 2 1/2 whms, main flr. laundry and family rooms, den, fireplace, whirlpool tub, ceramics plus much more. Call Ossie Tancock or Bruce Silvera at 477-0075, res. 292-1178/640-4220.



2 ACRE BUILDING LOT BALLANTRAE
Last lot left in sub-division of new homes. Paved road and services to lot line. Survey and good financing available. Great value at \$125,000.00. Call Ossie Tancock or Bruce Silvera at 477-0075. Res. 292-1178/640-4220.



Call Rosalind Anderson 477-0075.



For a free market evaluation of your property please call Bruce Silvera 477-0075.



SERVICE WITH A SALE
Please call Gail Sandall 477-0075.

The Standard of Excellence

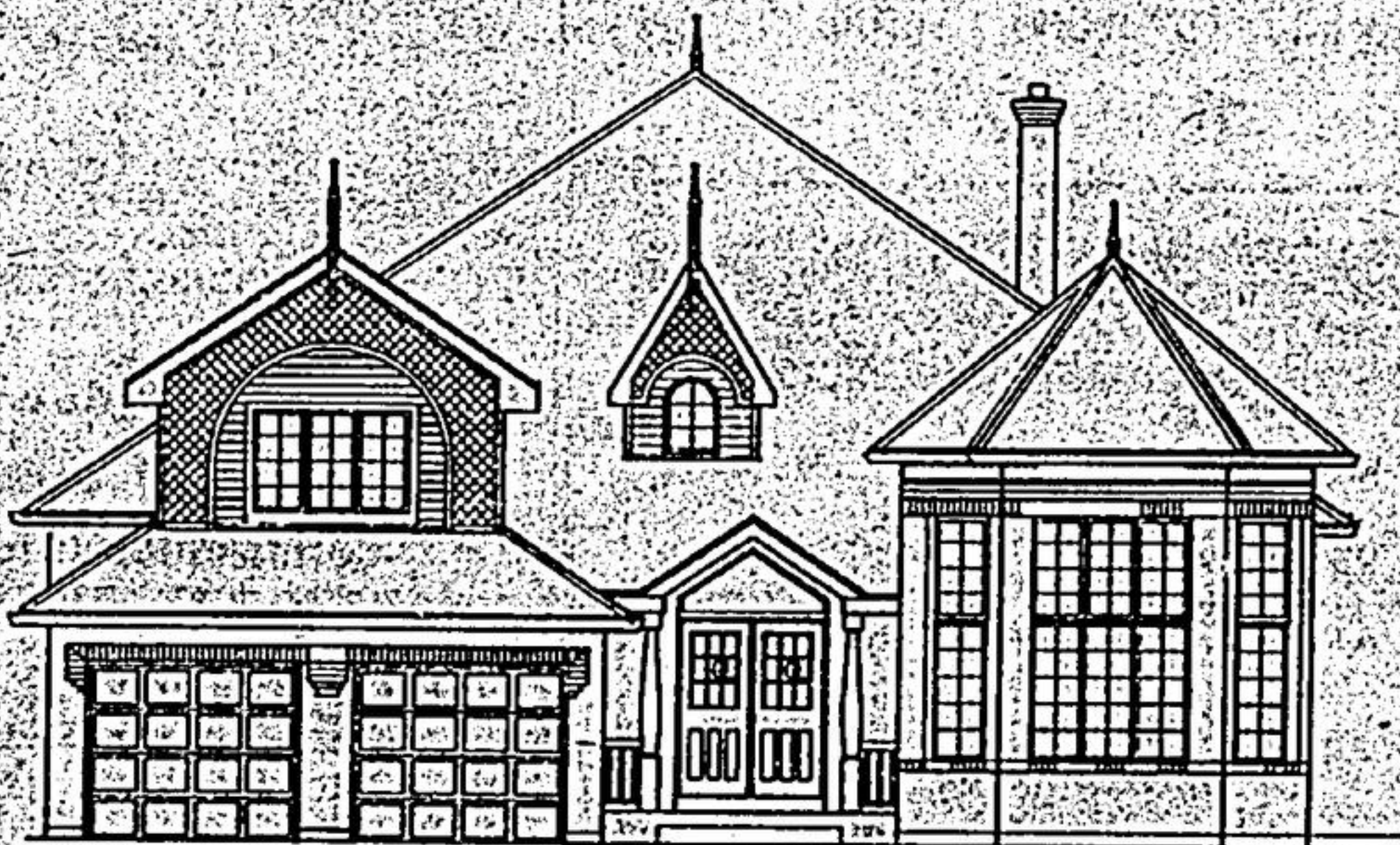
Bloomington Gates



IN RICHMOND HILL

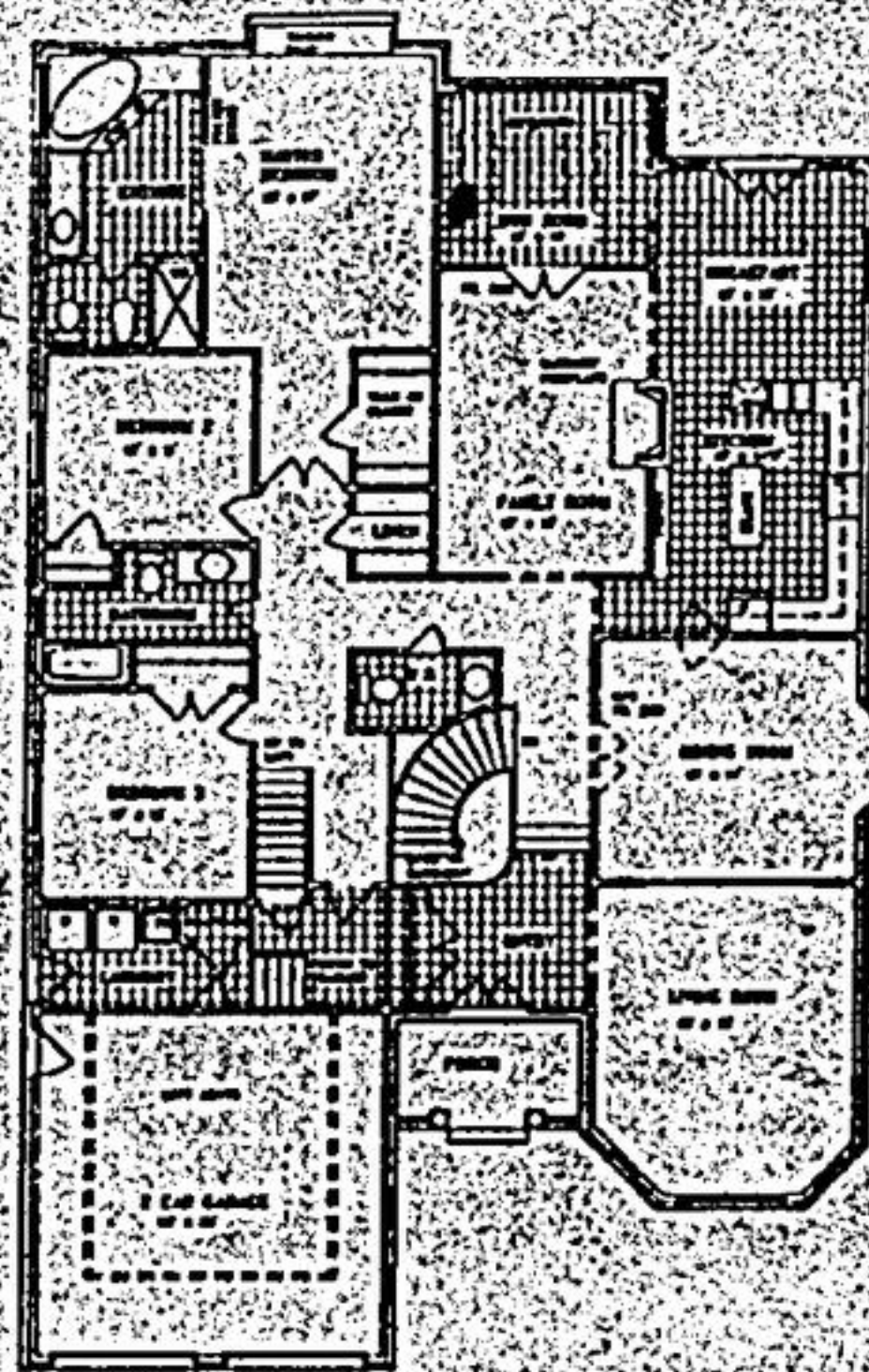
"INTRODUCES THE WEDGEWOOD"

A brand new bungalow design, with one of a kind exterior elevations to compliment our elegant victorian streetscape.



FRONT ELEVATION A

7805



GROUND FLOOR PLAN

THE WEDGEWOOD \$369,900

Featuring 10 ft. ceiling with 14 ft. in the living room. Double front entry doors. Curved oak staircase finished to basement. Large dining room with bay. Oak railing overlooking living room. Island kitchen with extra pantry. Enclosed sunroom with skylights at rear. Hideaway loft (or extra bedroom). Ceramic throughout. All the comforts of a luxury home. Interior changes possible. Summer possession.

11 ADDITIONAL PLANS FOR PHASE 2 FEATURING:

- Huge Front Verandahs • 10 ft. ceilings in some rooms
- Gingerbread Trim • Luminous kitchen ceilings
- Bay windows front & rear • Laundry chutes
- Attached and detached 2 & 3 car garages
- Large master bedroom with ensuite step up tub with marble surround
- Double French doors to patio.

From 2,750 sq. ft. to 4,500 sq. ft. plus. Priced from \$288,900. Choice lots from 60 ft. to 120 ft. frontages. We're open to interior changes where possible.

MAPLE LANE LANDS & DEVELOPMENT CO. LTD.

Site Hours
Mon.-Thurs. 1 p.m. - 8 p.m.
Sat.-Sun. & Holidays 11 a.m. - 6 p.m.
Closed Fridays
Drive north on 404 turn west at Bloomington Rd. to Yonge St. Location S.W. corner.

CALL 773-2773

