

OWN A MASTERPIECE



Barthau Jewellers  
5 Main St. W.  
Stouffville 640-4646

# The Tribune

Serving Whitchurch-Stouffville, Uxbridge & Area

DINNER THEATRE BANQUET FACILITIES



Deer Park Inn  
A MEMORABLE DINING EXPERIENCE  
SUNDAY BRUNCH/SMORGASBORD  
WEDDINGS 640-6060

VOL. 100 NO. 29 A Metroland Community Newspaper Wednesday, November 18, 1987 64 pages 50 cents

## Small crowd on hand for health report

STOUFFVILLE — "No significant health risks from the landfill site could be identified."

So concluded Thomas I. Goss, a Project Director commissioned by the Province to conduct a Health Study in Whitchurch-Stouffville related to waste disposal near Hwy. 48, north of the Bloomington Road.

A public meeting for the purpose of discussing the Report was held at Stouffville Dist. Secondary School, Monday. Less than 20 citizens attended.

Bob Lewis of Bloomington wondered if any contact had been made with former residents now living elsewhere who might have been affected by contamination from the site.

Dr. Rama Nair of the University of Ottawa replied in the negative, saying these numbers were low and not significant.

Charles Parker, Manitoba Street, Stouffville, expressed surprise that comparison figures from the three areas were so similar.

Dr. John Hodgkinson, Associate Medical Officer of Health called the similarities 'almost uncanny'. He noted, however, there were some significant differences, for example higher incidents of breast cancer here.

Mayor Fran Sainsbury asked if this result represented a concern.

Mr. Goss said figures from 1979 to 1983 were consistent with those across the province and the country.

Concluded Mayor Sainsbury: "This Study removes some of our fears. We have learned not to be complacent and we hope never to see another landfill site in this area again."



Graduating students, including (left to right) students of Whitchurch-Stouffville, and their parents, are presented with awards by the Mayor of Stouffville, Fran Sainsbury, and the Mayor of Uxbridge, Ontario, at the graduation ceremony held at the Uxbridge Community Centre, Uxbridge, Ontario, on Nov. 17.

## Councillor raps 'witch-hunt'

STOUFFVILLE — Ward 5 Councillor Wilf Morley says he has no objections to having Regional Chairman Eldred King and staff advisors attend a meeting in Stouffville "but if it turns into a witch-hunt, I'll walk out."

Councillor Morley made his position clear after it was recommended the Town direct its complaints to regional personnel in person.

"Let's have a civilized discussion," suggested Councillor Margot Marshall.

Most of the criticism at a meeting Nov. 10 was vented by Ward 2's Ron Robb. He charged certain services originally provided by the Region had recently been withdrawn. He pointed to the water problem at Ballantrae as a prime example. Previously, he said, the cost of corrective mea-

asures would have been split 60% (Province), 25% (Region) and 15% (Town). Under the present arrangement, 40% of the cost will be borne by the municipality.

Robb listed other shortcomings as well including cost absorption of street lighting on regional roads; refusal to provide the Town with large-size wall maps and rejection of population figure postings on roadside signs.

"I'm sure I could come up with more if given time to think about it," Robb fumed.

Mayor Fran Sainsbury admitted certain changes in policy seemed to reflect the wishes of urban municipalities to the south. "Certainly, they pay the lion's share of the costs but they also obtain the lion's share of the benefits," she concluded.



Students share spotlight during the graduation ceremony held at the Uxbridge Community Centre, Uxbridge, Ontario, on Nov. 17. The Mayor of Stouffville, Fran Sainsbury, and the Mayor of Uxbridge, Ontario, are seen presenting awards to the graduates.

## Generous donation

A 240-acre tract of Whitchurch-Stouffville land, valued at \$635,000, has been given over to the Lake Simcoe Conservation Authority.

The site, known as the McLennan property is bounded by the Aurora Sideroad on the south; Warden Avenue on the west; Kennedy Road on the east and St. John's Sideroad on the north.

The heavily wooded area lies adjacent to the York Region Forest. It will likely be used as an outdoor education facility, The Tribune was told.

On Wednesday, a cheque in the amount of \$75,000 was presented by York Region as a grant towards acquisition of the land.

## Garbage problem

STOUFFVILLE — A "fed up" Councillor Margot Marshall has vowed she'll turn "garbage vigilante" if people refuse to cooperate with the disposal of refuse throughout Stouffville's downtown.

Councillor Marshall displayed her irritation at a Business Improvement Area board (B.I.A.) meeting, Nov. 11 when told bagged garbage was still being left out on weekends.

"I guess I'm going to have to walk the streets and see who's doing it," she stated. Once the identities of the culprits are learned they can be charged, she said.

Mrs. Marshall indicated she would personally enjoy calling the bylaw enforcement officer if nothing more than to make examples of the offenders.

"I'm fed up," she declared.

Tom Thompson, a local downtown businessman and B.I.A. member, claimed merchants aren't to blame but rather tenants who live above the stores.

## Investigate sex attack

WHITCHURCH — During the evening of Aug. 13, a man knocked at the front door of a residence on the 7th Conc. of Whitchurch-Stouffville.

He requested information about articles on display at a recent sale.

The woman recognized him and agreed to a request to see several items in a nearby garage.

Once inside, he grabbed her, threw her to the floor and threatened her with death if she didn't comply with his demands.

The suspect sexually assaulted the woman, then ordered her back into the house while he made good his escape. The car is described as large in size with a slanted rear roof.

The wanted man is white, 5 feet, 8 inches in height, 182 pounds; well built; unshaven; brown hair and eyes. He was wearing a red baseball cap, navy blue T-shirt, beige pants and running shoes.

York Regional Crime Stoppers are seeking public assistance in solving this case. They will pay up to \$1,000 for information leading to an arrest. The number to call is 222-TIPS or toll free 1-800-387-8477.

A re-enactment of the crime will be shown on CITY-TV Thursday, (to-morrow), at 6 and 10 p.m.

### Graveside grief

Community grief was visible at the funeral for Armin Wolfing, 68, who died of a heart attack on Nov. 10. The funeral was held at the Stouffville Cemetery on Nov. 12. The service was officiated by Rev. James Cameron of Don Mills. The casket was borne by the Stouffville Fire Department. The funeral home was in charge of the arrangements.

## Historic air battle painting is made available to Town

STOUFFVILLE — A piece of local and national history, dating back to World War I has been captured in watercolors. And it's available to Whitchurch-Stouffville for \$1,000.

It's an artist's conception of an aerial dog-fight between German air ace Baron von Richtofen and Capt. Roy A. Brown of Canada.

Captain Brown is a former resident of Bethesda in Whitchurch Township. He died in 1944.

In the exchange, Brown emerged victorious, shooting down the Red Baron and his German Jagdstaffel II.

Douglas Warne told Council, Nov. 10, he came across the historic painting quite by accident during a trip out West last summer. He felt the Town might be interested in purchasing the work of art and hanging it in a prominent place "as a reminder of the part one of its residents played in Canadian history."

The asking price is \$1,000.

Little is known of Capt. Brown's heroics due to the fact he was a modest man who declined to discuss his overseas adventures.

History records the following: It was a Sunday in April, 1918. The feared Baron von Richtofen was on patrol over the Somme Valley

in Germany when he spotted a lone Allied plane far below. As he had done on so many previous occasions, he put his tri-plane into a steep dive and head straight towards his 81st victim. The pilot of that craft was Lieut. Wilfred May.

May found himself a "sitting duck". His gun had jammed. However, unknown to either May or Richtofen, Brown was watching from above. In seconds, he was on the Baron's tail. One bullet found its mark and the 'Red Knight' was dead.

The seat of Richtofen's plane is on display at The Royal Military Institute, Toronto.

With Council's approval, a painting of this historical event could be on display in the Town Library.

Members agreed the offer should be turned over to the Whitchurch-Stouffville Historical Society for its recommendation.

Persons wishing additional information may contact Mrs. Card at 640-3467 or Mr. deGroot at 640-3948.

man Jagdstaffel II.

Douglas Warne told Council, Nov. 10, he came across the historic painting quite by accident during a trip out West last summer. He felt the Town might be interested in purchasing the work of art and hanging it in a prominent place "as a reminder of the part one of its residents played in Canadian history."

The asking price is \$1,000.

Little is known of Capt. Brown's heroics due to the fact he was a modest man who declined to discuss his overseas adventures.

History records the following: It was a Sunday in April, 1918. The feared Baron von Richtofen was on patrol over the Somme Valley

## Plan 'united' drive

STOUFFVILLE — Three days and \$8,000 to go.

This is the challenge for Norma Card, chairperson of the Whitchurch-Stouffville Branch of York Region United Way.

The objective locally is \$46,460. At press time, \$38,000 had been raised.

Due to the recent mail strike, donation envelopes were held up, Mrs. Card told The Tribune. To

compensate, the campaign will be extended.

Thirty-one agencies benefit from United Way assistance including the Markham-Stouffville Family Life Centre. The objective in York Region is \$1.5 million.

"We're within 80 per cent of our goal," director Hank deGroot said Monday, "the final push is on."

## St. Mark's addition

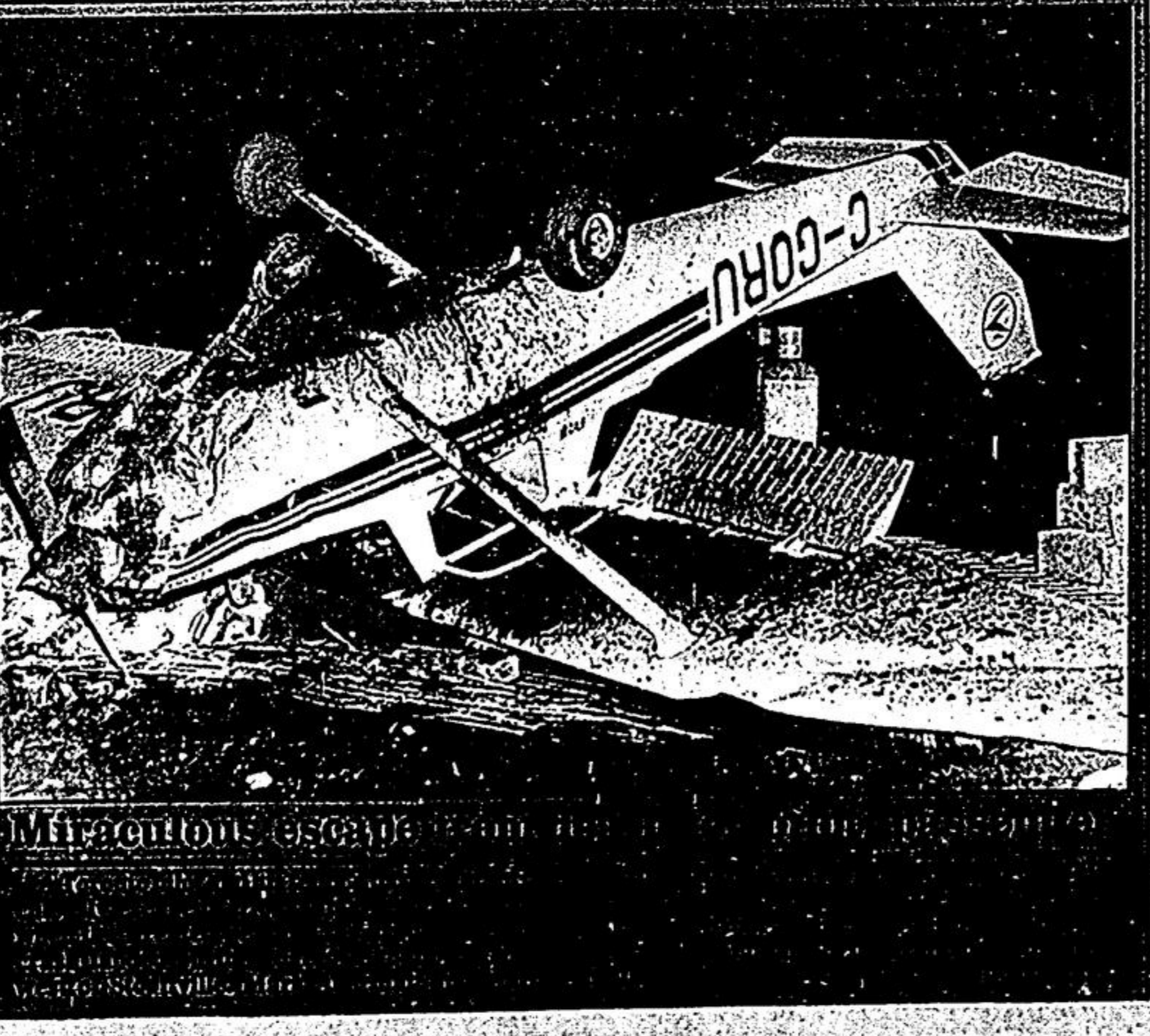
STOUFFVILLE — With five portable classrooms on location and another expected before Christmas, the York Region Separate School Board is seriously considering an addition to St. Mark's School, Stouffville.

Enrollment presently stands at 370 with a projected attendance of 410 by September '88.

The school was built to accommodate 257 children, Principal Barbara Bodkin told The Tribune.

"We're coping," Mrs. Bodkin said. She explained that rather than construct a second building at a site on Millard Street, the trustees are leaning towards adding rooms to the present school. "The site here is adequate," Mrs. Bodkin noted.

The Parents' Guild, under the chairmanship of Ann Pride, plans to discuss the situation with area MPP Bill Ballinger in an effort to stress the seriousness of the situation; the principal concluded.



## INSIDE LOOK

- Night of magic...A-3
  - Goodbye old friend...A-4
  - Around Town...A-7
  - Man with a purpose...A-8
- ### SPORTS
- Tigers DYSSAA champs...B-1
  - Minor Hockey...B-2
  - Bowling results...B-3



CECIL REESOR  
Farmers' Friend  
Page 6/1