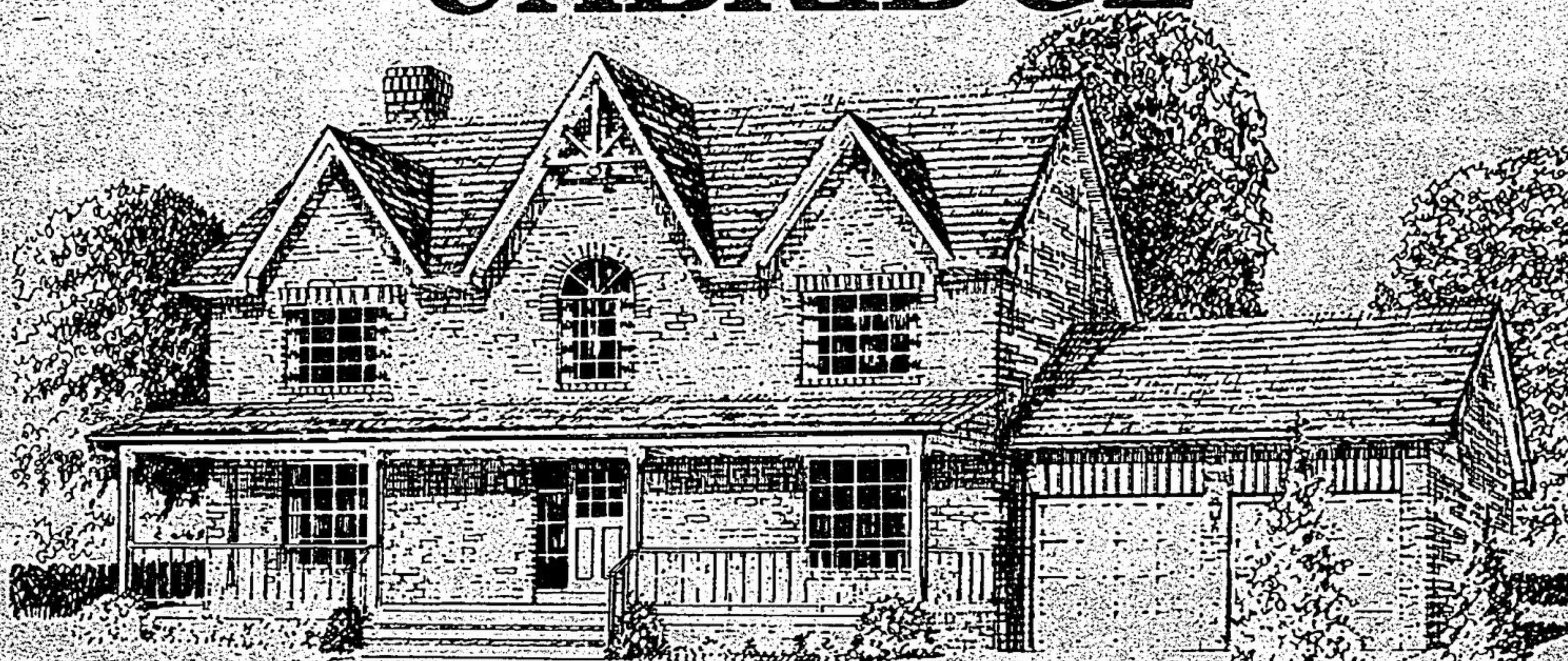


A COLLECTION OF HERITAGE HOMES

IN THE TOWN OF

UXBRIDGE



THE GREENBANK 2258 Sq. Ft. \$210,900

GRAND OPENING OF PHASE II



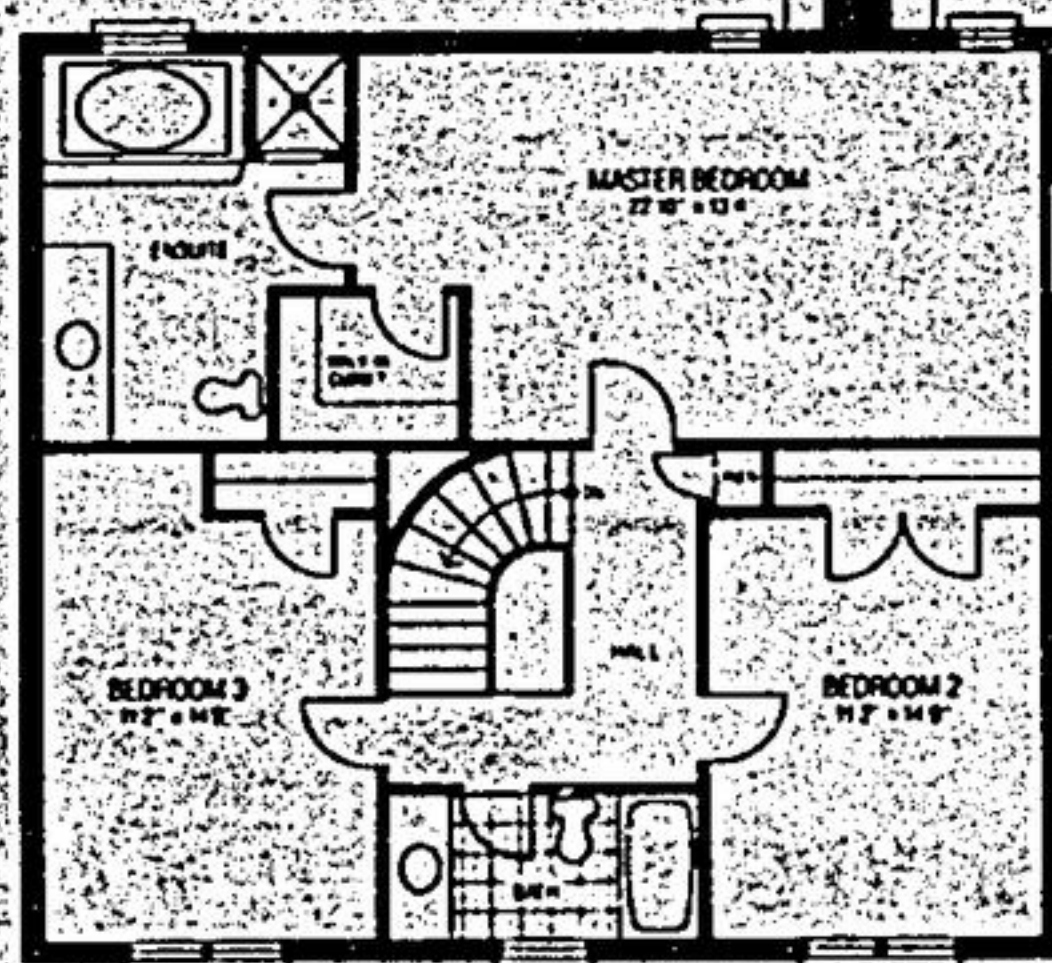
JOIN US AS WE TURN BACK THE CLOCK 100 YEARS TO RECAPTURE "OLD ONTARIO" CHARM...

Quaker Village: a self-contained country community surrounding 25 acres of parkland. Complete with a pond and lovely walking trails.

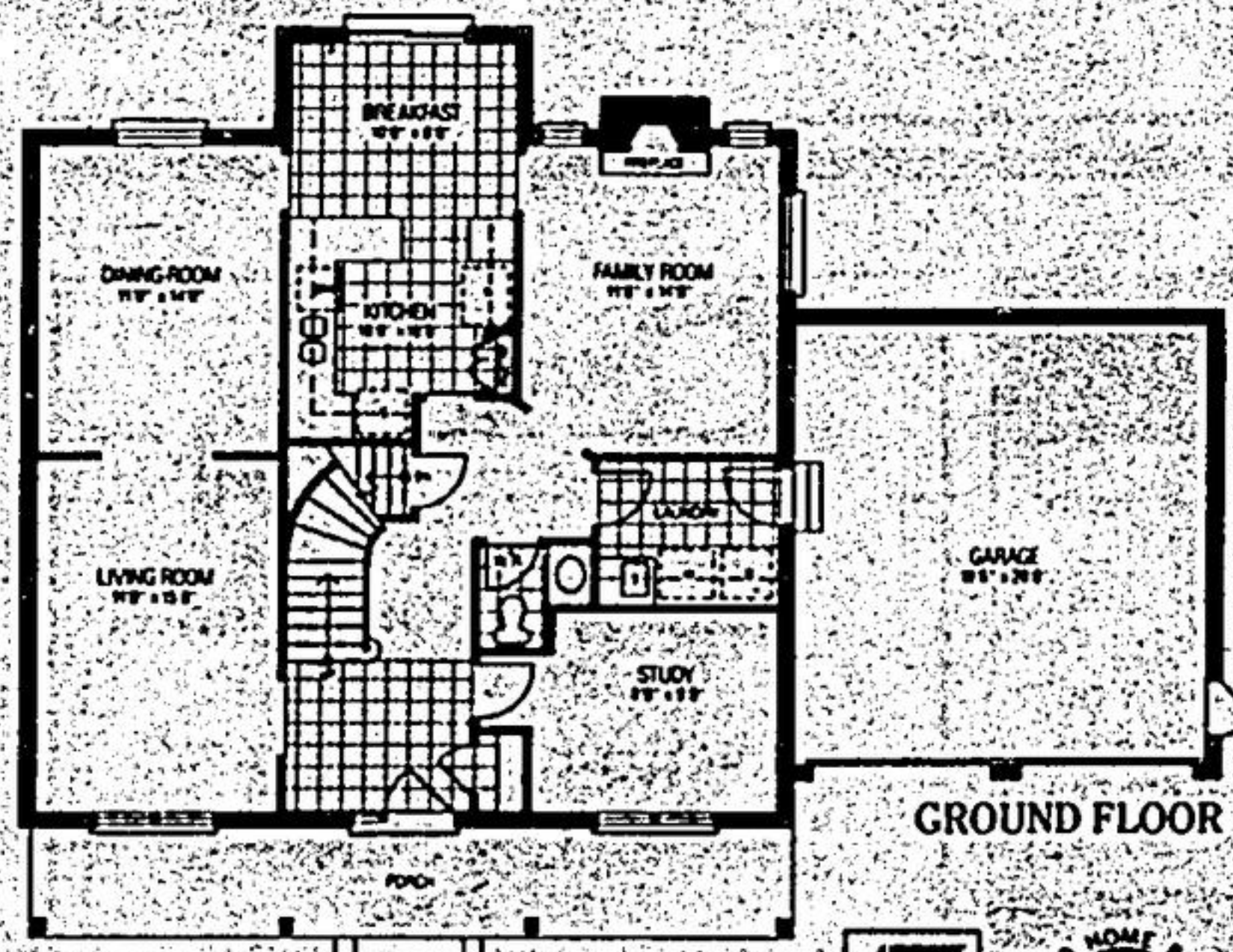
ON THE STREET WHERE YOU LIVE: old style porches, and backyards that face onto parkland. Unique designs that do away with protruding garages and suburban sameness. Authentic board and batten, or all brick exteriors. Quaint streetscapes and large lots, 57 ft. frontages and up.

YOUR NEW HOME: It could be a bungalow or two-storey model, from 1809 sq. ft. to 2740 sq. ft. Six beautiful designs to choose from. Spacious ensuite bathroom in your master bedroom. Main floor laundry room. A full size family room with cozy fireplace. And walkout basements onto parkland are also available.

CLOSER THAN YOU THINK: Only 30 minutes from Hwy. 404 and Hwy. 7! Frequent GO Bus service to and from Markham, Scarborough Town Centre and downtown Toronto. And all the amenities of historical Uxbridge at your doorstep.



SECOND FLOOR



GROUND FLOOR

From only

\$194,900

WE INVITE YOU TO VISIT OUR SALES CENTRE

Mon.-Fri. — Noon-7 p.m.
Sat., Sun. & Holidays — 11 a.m. - 6 p.m.

852-7469

