

# View a video of wild life artist

## GALLERY BROUGHAM

Visitors interested in watching the progression of a painting from its inception to completion may now view a video of wild life artist Marc Barrie made while painting on a field trip.

Signed and numbered prints of the new painting of a solitary loon titled "Pride of the North" are now available at the Gallery.

## GALLERY BROUGHAM

9 Miles East of Markham on Hwy. 7, in the Village of Brougham Wed. - Sunday 10 - 6, Friday 10 - 8 683-7010

## MENGER GALLERY

Original oils, watercolors and limited edition prints by members of the Keirstead family are featured at the Menger Gallery; Mitch, Colbrook, James Keirstead, Pie, Aneka and Shon.

Opening Oct. 16 and running to Oct. 25, is an exhibition of recent paintings by Mitch.

Coming in November is a showing of all new oils by Colbrook.

## MENGER GALLERY

On the Stouffville Road between Hwy. 404 and Woodbine Ave.

## Gallery Round-up

*Rena Mingay*



Tues. - Friday 1 - 9 p.m.  
Sat. 10 - 5; Sunday 1 - 5  
887-5795

## MARKHAM THEATRE

Two members of the Markham Group of Artists are exhibiting their work in the lobby of the Theatre during October. Using watercolor and watercolor with gouache, Barbara Large paints in both abstract and realistic styles.

A collection of landscapes and floral paintings in oils and watercolors are being exhibited by Joy Godfrey.

## MARKHAM THEATRE

171 Town Centre Blvd. Markham  
Mon. - Sat. 11 - 6 and during theatre performances.

## DEVONSLEIGH PLACE

For the enjoyment of restaurant patrons, the Devonsleigh Place is host to a showing of paintings by Markham artist Nancy Magnish.

A series of paintings depicting Scottish castles will be featured during the fall season. In

addition are two animal portraits in pastels.

Ms. Magnish paints and teaches in oil, acrylic, watercolor, pastel, conte, inks and charcoal in her Markham studio.

Devonsleigh Place  
4125 Steeles Ave. East  
497-5557

## LATCHAM GALLERY

The work of three women artists; Betsie Downie, Lorraine Phillip and Lottie Thomas will be featured in the upcoming show at the Latcham Gallery. Entitled "Comparative Forms", each artist expresses in her own way the concept of visual communication.

Betsie Downie expresses her spiritual nature in rather small but richly colored prints and paintings.

Using mixed media in prints which deal largely with early European immigration to Canada, Lottie Thomas's approach is more direct.

Lyrical calligraphic marks may be observed in the drawings of Lorraine Phillips.

An interesting exhibition, opening Sunday Oct. 18 and running to Nov. 8.

## LATCHAM GALLERY

Located in Whitchurch-Stouffville Public Library, 65 Main Street West, Stouffville

Tues. - Fri. 9-8, Sat. 9-5, after Thanksgiving  
Sunday 12-4

## GORDON GALLERY

Currently hanging in the Gordon Gallery in Unionville are several paintings in mixed media by Barry Kent Mackay. An interest and dedication to nature and wild life is illustrated in his depiction of birds and animals.

Original watercolors in a light and airy style by Janine Kinch are also shown here. Scenes of Unionville and floral representations are included.

## GORDON GALLERY AND FRAME

202 Main Street, Unionville  
475-8150

## WILLIAMS GALLERY

Original paintings by several local artists may be found in the Williams Gallery located in the back of the Old Queen's Hotel in Unionville. Pastels by Enid Reed, watercolors by Babs Collier, Lois Steenson and Richard Kalmin are presently on view.

## WILLIAMS GALLERY

176C Main Street, Unionville  
477-2749

# T.H.E. GREENS

OF MARKHAM

"Your Neighbourhood Meeting Place"

## FAMILY RESTAURANT KIDS MENU

Daily Luncheon & Dinner Specials

## LIVE ENTERTAINMENT

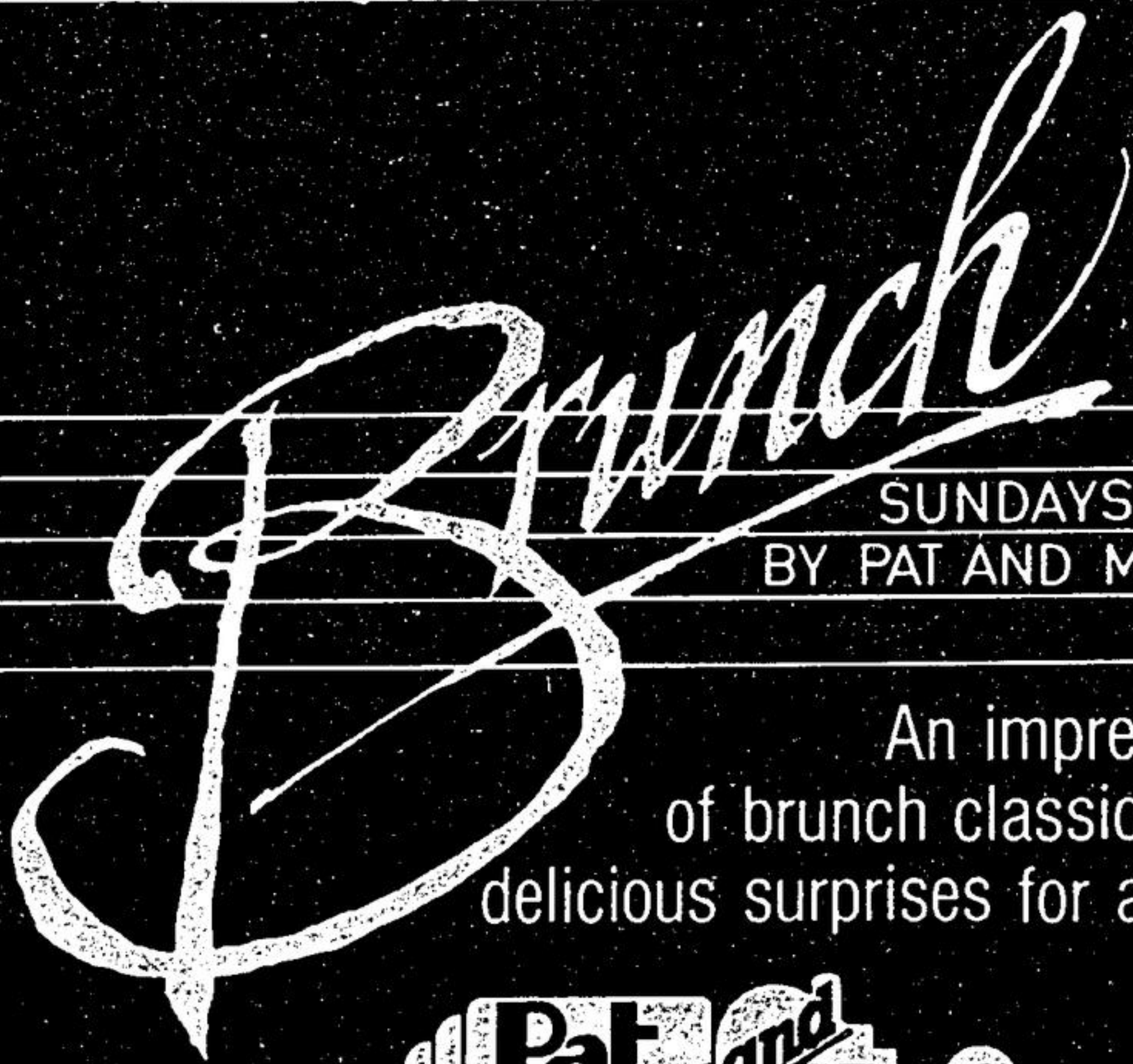
OCT. 15, 16, 17

# BOBBY DUPONT

9:30 P.M. - 1:00 A.M.

16th Ave. Plaza

471-7775



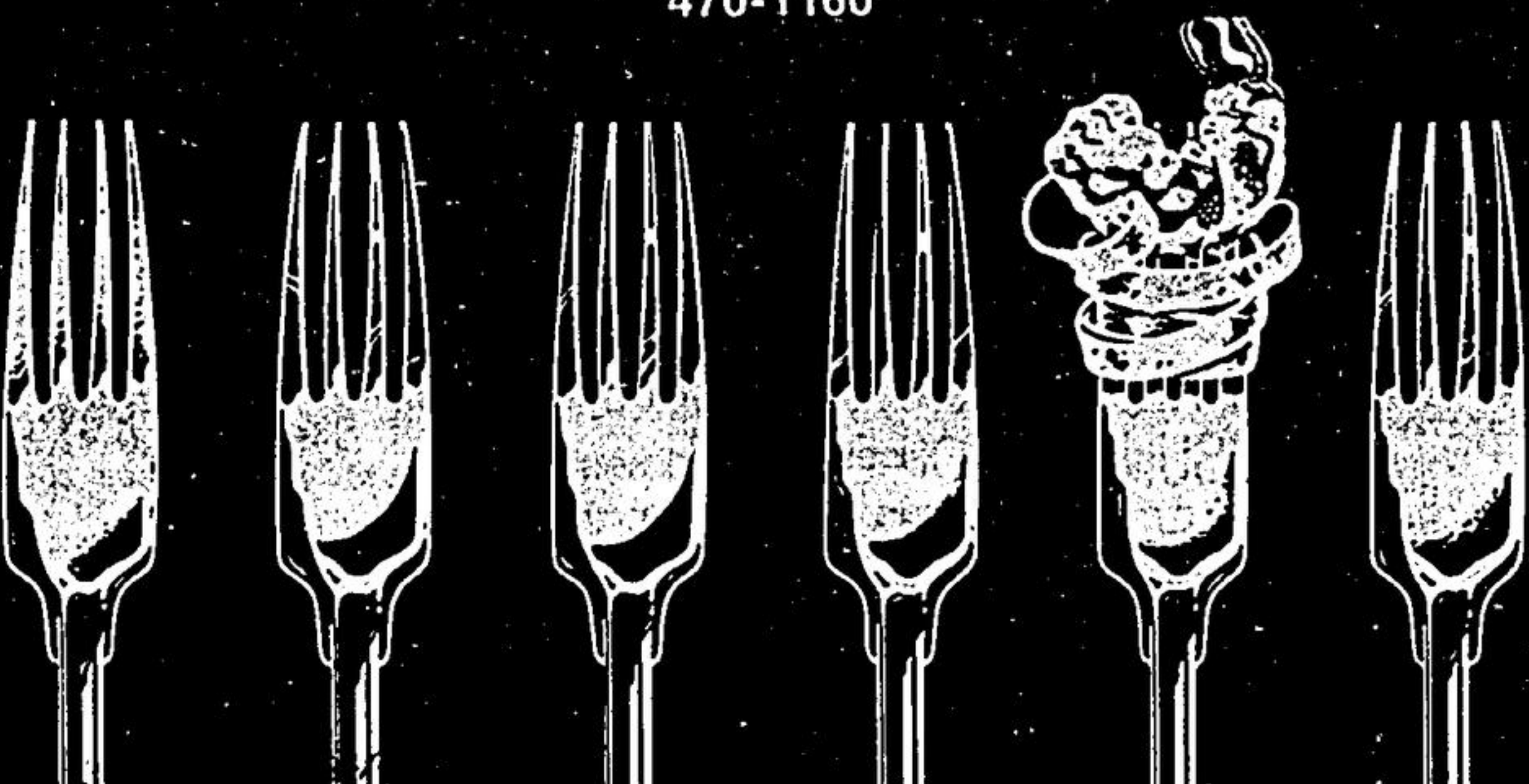
SUNDAYS 11AM-2PM  
BY PAT AND MARIO'S

An impressive spread of brunch classics with some delicious surprises for added appeal.



*No one offers more delicious options!*

7181 WOODBINE AVENUE  
WOODBINE & STEELES  
470-1160



JOIN US!

# La Villetta

Fine Italian Dining

Dine and Dance in style or just relax by the fireplace every Friday and Saturday night. Stating Friday, October 30th.  
(Dancing Starts at 9:00 p.m.)  
Dress Code

Banquet facilities available from 20 to 120 people.  
Reserve now for Christmas

FOR MORE INFORMATION OR RESERVATIONS CALL REBECCA

640-1670  
STOUFFVILLE

