

Bloomington Gates



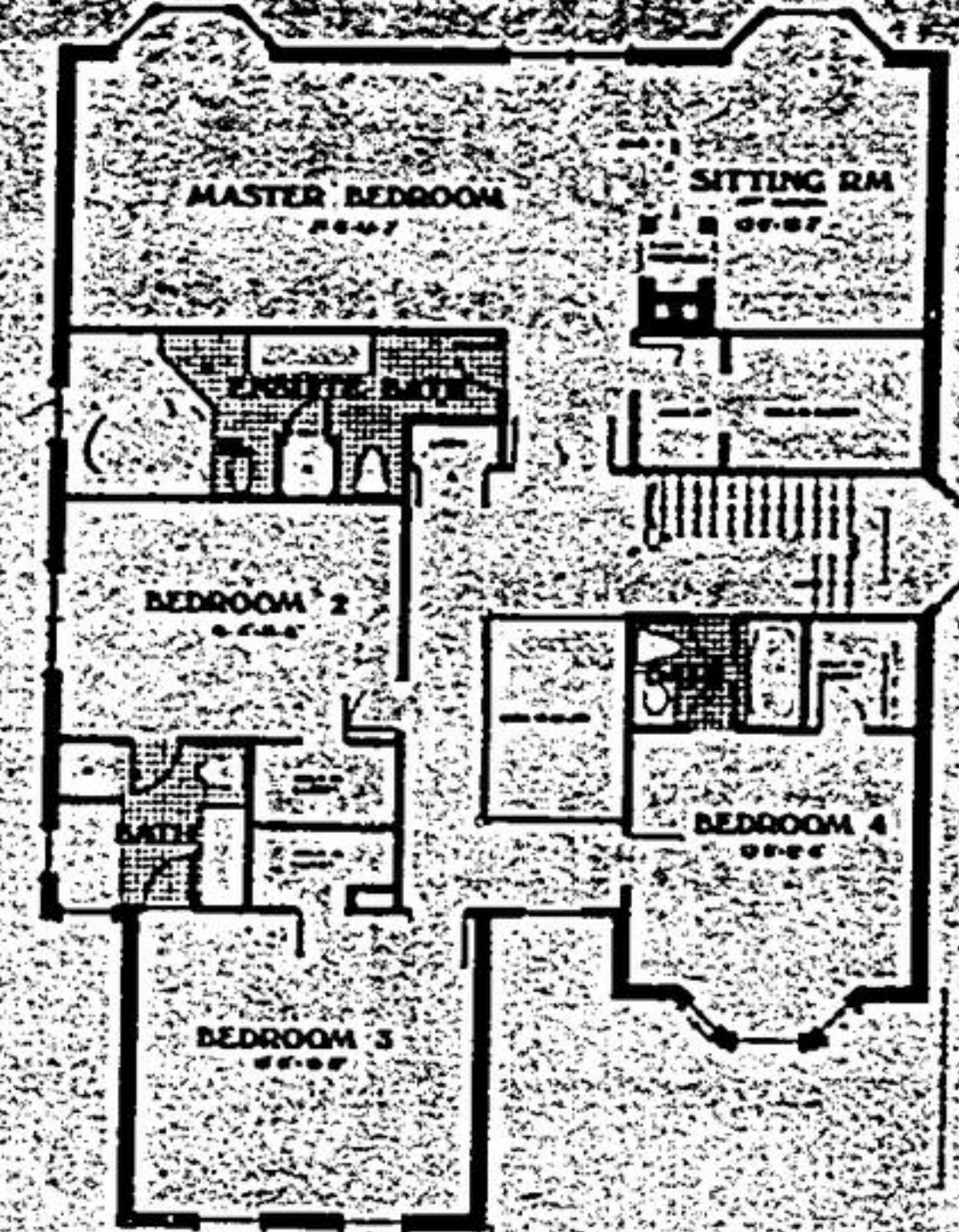
THE WELLINGTON \$398,900

4200 sq. ft. of Victorian Elegance on quiet 71 ft. x 200 ft. lot. Soaring 10 ft. ceilings on main floor. 3 way fireplace in family room/dinette with double french door walk out to patio, solid oak staircase, finished to basement level, main floor library/den, magnificent master bedroom with sunken sitting room and two way fireplace. Possession 30 days.

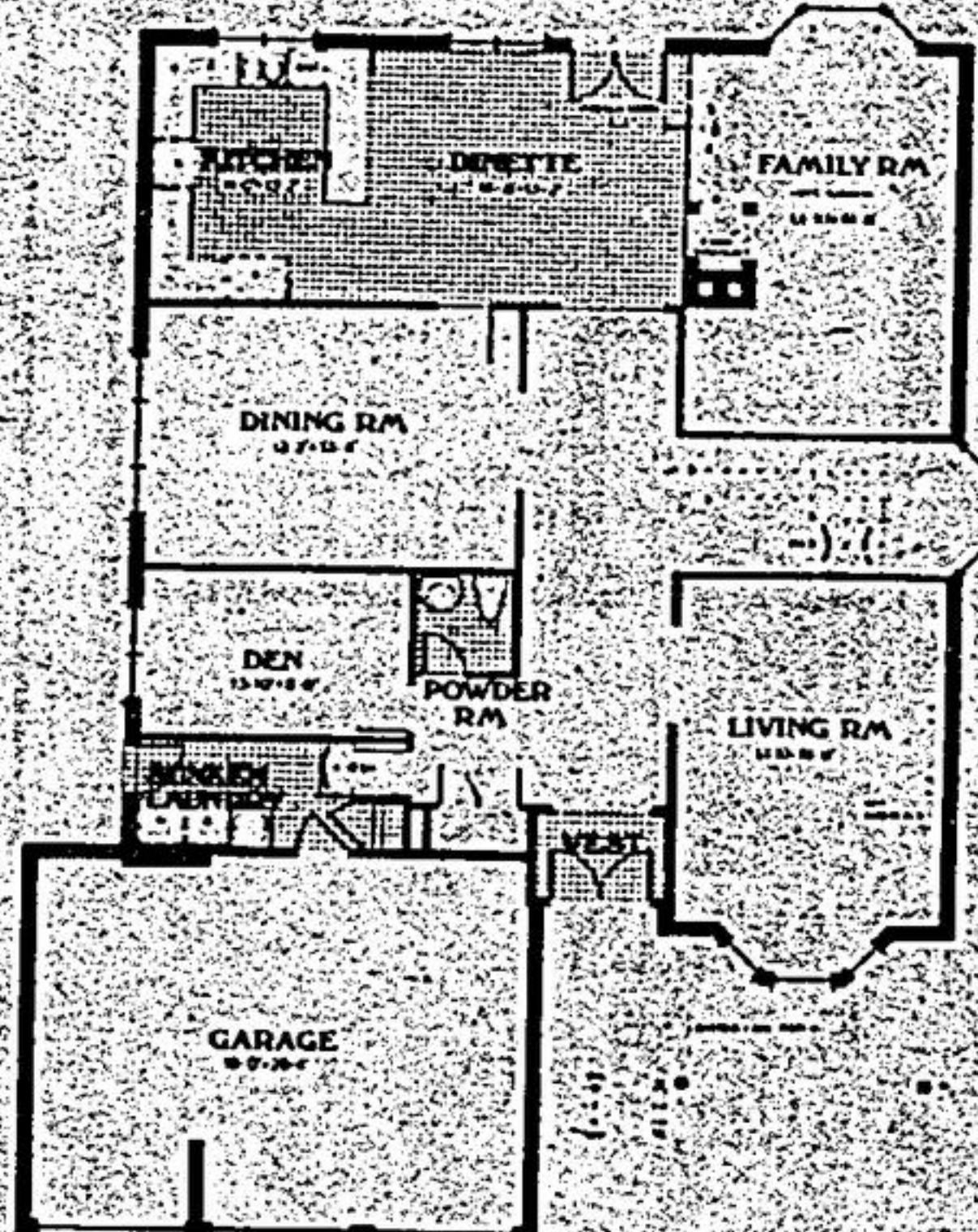
FINELY CRAFTED

HOMES FROM (2,750 sq. ft. up to 5,300 sq. ft.) priced from **\$288,900**

Situated in North Richmond Hill just a 40 minute drive from downtown Toronto, the builder is creating a community of 43 finely crafted homes within the special enclave of "BLOOMINGTON GATES". For the discriminating home buyer, we are presenting 8 magnificent designs in turn of the century VICTORIAN STYLE which cannot be found elsewhere in the area north of Toronto. We'll build your dream home on selected lots from 60' to 120' frontages. Walkout and Cul De Sac lots also available. Builder is open to interior changes to meet your family requirements. Golfers will love it! (we're just 3 minutes from the brand new Don Mills Golf Course which will be opening soon.) GO bus leaves every 15 minutes to Finch subway which takes only 30 minutes.



SECOND FLOOR PLAN



MAIN FLOOR PLAN

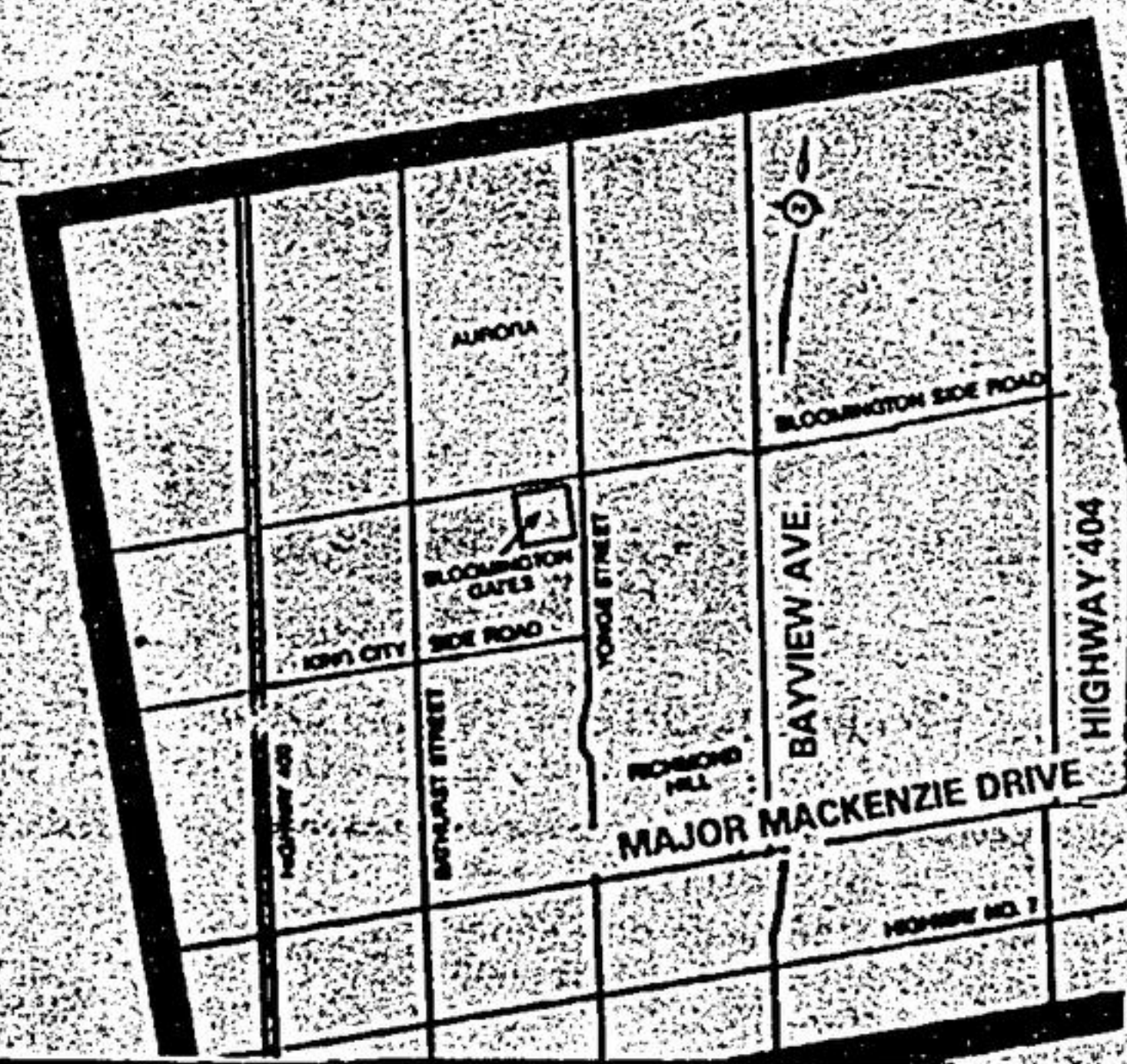
FEATURING 8 DIFFERENT FLOOR PLANS WITH

- Huge Front Verandahs
- Gingerbread Trim
- Bay windows front & rear
- Attached and detached 2 & 3 car garages.
- Double French doors to patio
- 10 ft. ceilings in some rooms.
- Luminous kitchen ceilings
- Laundry chutes
- Large master bedroom with ensuite step up tub with marble surround



MAPLE LANE LANDS & DEVELOPMENT CO. LTD.
 Site Hours
 Mon.-Thurs. 1 p.m. - 8 p.m.
 Sat.-Sun. & Holidays 11 a.m.-6 p.m.
 Closed Fridays
 Drive north on 404 turn west at Bloomington Rd. to Yonge St. Location S.W. corner.

CALL 773-2773



PRIVATE SALE

1 year old Greenpark home backing onto pond. 3 bedrooms, 2 baths, professionally finished family room and large deck off eat in kitchen.

No agents please.
640-3372

PRIVATE SALE \$155,900.

Brand new - choose your own colours - 3 bdrm., 2 baths, all brick, raised bungalow. Large kitchen with dinette, separate dining room, spacious living room, double car garage, lot size 50 x 115 ft. located in the community of Bradford just 6 kilometers north of Newmarket.

Call 294-7788
 Tues. - Fri. after 7:00 p.m.



OPEN HOUSE SUN. OCT. 18 1 - 4 P.M.
 21 North St. Uxbridge. Landscaped 1/2 acre with hilltop view of town, 2 walkouts, family rm. & rec. rm. \$185,900. Hostess: Lorrie Lefler 640-3131.



TOWERING PINES \$74,902
 Just listed. A great opportunity to transform a cottage into your home. New holding tank, 100 amp. serv., a.b.b. heat., insul. in walls and ceiling. Profit by your efforts. Call Lois Hatch 640-3131.

PRIME INVESTMENT PROPERTY
 50 acres 1/4 East of Hwy. 404 on Woodbine. Large home & horse barn, track, rolling land. Earl Dowsell/Ross Hetherington 640-3131, Res. 640-2441.



OPEN HOUSE SUN. 1-4
 Sandford - Great family home, 3+1 beds. Ideal for grandma too. Fireplace. Move in before Christmas. 1/2 acre. \$183,000. 4th Con. N. of Sandford Side Rd. Call Kathy Clulow for directions 640-2600, Res. 852-5142.



DON GELDART



KIM RESSOR

ATTENTION HORSE LOVERS
 Cherry St. - 10 Min. North of Stouffville 4 bed home offers 3 baths, m/f laund., large eat-in kit. with w/o to deck, cent. air, situated on 2.27 acres surrounded by miles of trails. Listed at \$325,000. Call Don Geldart or Kim Reesor 640-3131.



DON GELDART
5.7 ACRES - UXBRIDGE NORTH \$62,500

Well treed lot with 298 ft. front and area to build. Poss. pond site. Call Don Geldart 640-3131 or 640-4023.