

# Juvenile club seeks players

By ALAN SHACKLETON  
Sports Editor

Tryouts for the newly created Markham-Stouffville-Unionville Juvenile boys hockey team that will compete in a Metro area AAA division have begun.

Markham's Bob Gibson is the coach, and he's urging talented Stouffville hockey players to come out for the team which will play in a new league featuring both Ontario Minor Hockey Association (OMHA) squads and Metropolitan Toronto Hockey League (MTHL) teams.

"I'm sure there are some really good hockey players in Stouffville who could play for this team," he said. "It will give them a great opportunity to advance themselves, possibly to the Junior B level as the league will be heavily scouted."

This is the first time the OMHA and the MTHL have combined to have teams in the same league.

"It's such a unique thing," Gibson said. "There are a lot of good 18-and-19-year-old hockey players around who aren't playing Junior, and this league gives them a chance to play some good, competitive hockey."

Other teams in the league will likely include OHMA representatives from Oshawa, Whitby and Pickering, while MTHL teams from Mississauga, Toronto Red Wings, Don Mills Flyers, Wexford and the Young Nationals will also be involved.

The local squad is sponsored by James Wade Engineering, and the coaching staff of Gibson, Trevor Parks and Blair Anderson is very experienced.

"This is a great opportunity for the coaches also, and we want to make it a success," Gibson said.

Hockey players in Stouffville have a number of options once they pass Midget age, and Gibson hopes they'll take the Juvenile squad into consideration.

Neither the Stouffville or Unionville hockey associations iced Juvenile OMHA teams last season, and that meant the end of the line for some players who were too old to play Midget anymore.

The Markham Juveniles will have a close affiliation with the Markham Travelways Junior B squad, Gibson added.

Tryouts for the team will be held at the Markham Centennial Centre, on McCowan Road north of Highway 7, on Thursday, Sept. 17 at 8:45 p.m.; Saturday, Sept. 19 at 9 p.m. and Saturday, Sept. 26 at 9 p.m.

For more information on the team, interested players should phone Bob Gibson at 294-3467.

## SAHL starts season

The Stouffville Amateur Hockey League (SAHL) begins another season of men's hockey this Sunday morning at the Recreation Centre.

The G&R Flooring Jets take to the ice against the Village Landscaping Capitals in the season's first match at 7 a.m.

Next up are Smurthwaite Heating Bruins and Betz Pools Nordiques who get underway at 8:07 a.m. At 9:15 a.m., Stouffville Travel Flyers and Farquharson Realty Penguins face off. Century 21-Meharg Whalers take on Canadian Tire Blackhawks at 10:22 a.m.

The morning's final contest features the battle of the restaurants at 11:30 a.m. as the Towne Restaurant Kings meet Green's Restaurant North Stars.

## Adult skating

The Stouffville Senior Adult Skating Club begins another season on Tuesday, Sept. 22.

The action takes place at the Whitchurch-Stouffville Recreation Centre from 7:30 p.m. to 9 p.m., and continues on a weekly basis on Tuesday evenings until early April.

The Club is mostly for seniors and is partially funded by a New Horizons grant from the federal ministry of Health and Welfare.

Membership fee is \$5 for the season, and skating fees are \$2 for members and \$3 for non-members.

## Minor hockey registrations

Registration for the Whitchurch-Stouffville Minor Hockey Association's 1987-88 season are slated for tomorrow and Saturday at the Recreation Centre.

Sign-ups on Thursday, Sept. 17, go from 7-9 p.m. at the Whitchurch-Stouffville Recreation Centre on Ninth Line North.

The final registration is this Saturday, Sept. 19 from 9 a.m. to noon, also at the Recreation Centre.

There will be an equipment exchange held during the sign-ups. Fees are as follows: Novice Hockey School \$120; Novice \$140; Atoms and Pee-wees \$150; Bantams and Midgets \$160.

For more information, please call Joanne Steel at 640-1934.



Specials effective Wednesday, September 16, 1987 thru Tuesday, September 22, 1987

### 3085 HIGHWAY NO. 7 AT WOODBINE

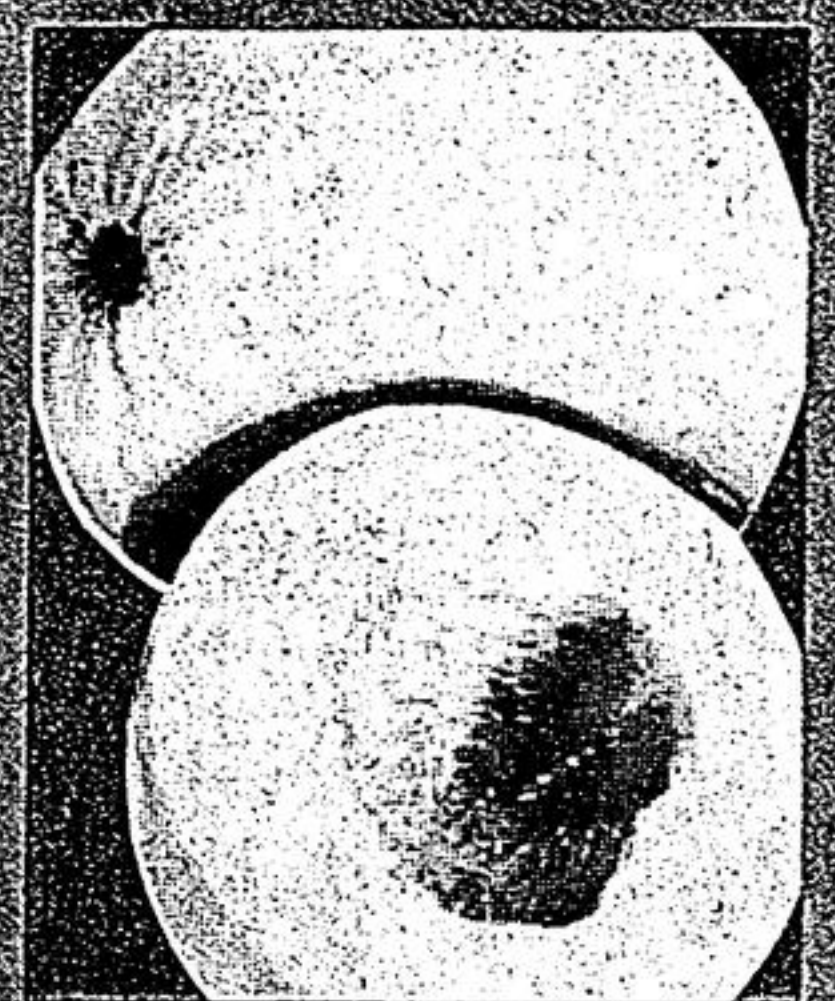
OAKVILLE: HIGHWAY NO. 5 AT TRAFALGAR BURLINGTON: 1225 FAIRVIEW STREET AT MAPLE MALTON: 7085 GOREWAY DRIVE

**OPEN SUNDAYS**  
8 a.m. to 6 p.m.  
For fruit, vegetables, and flowers only

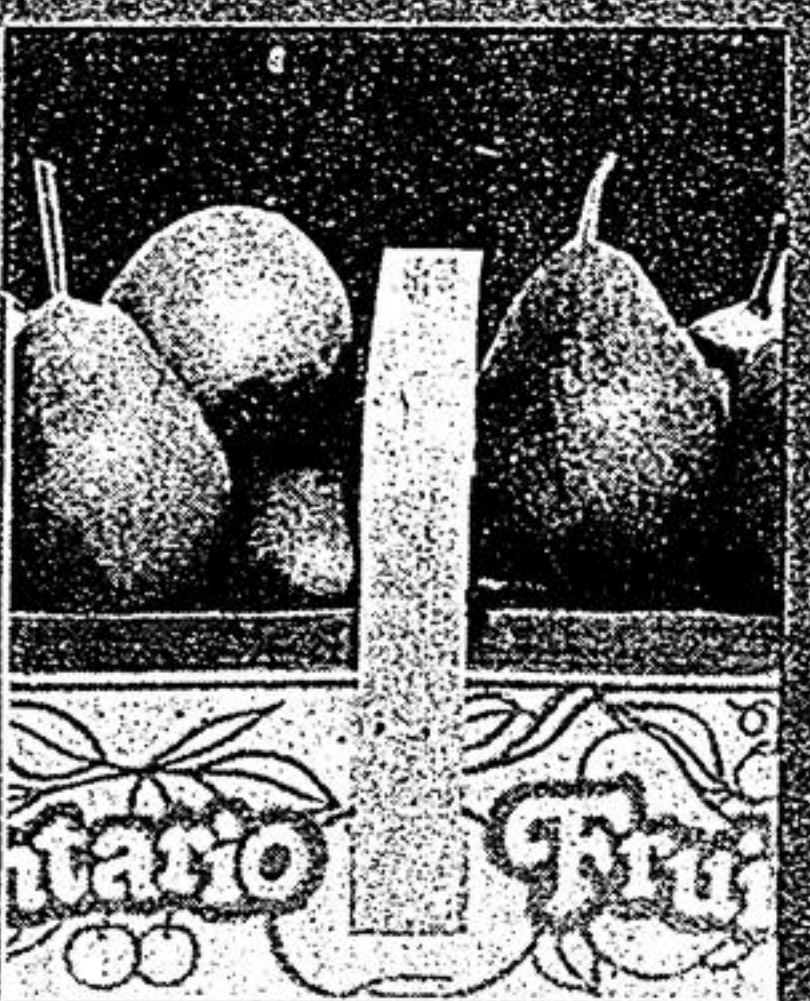
Open Monday thru Saturday, 8 a.m. to 9 p.m. Sunday (for fruit, vegetables and flowers) 8 a.m. to 6 p.m.



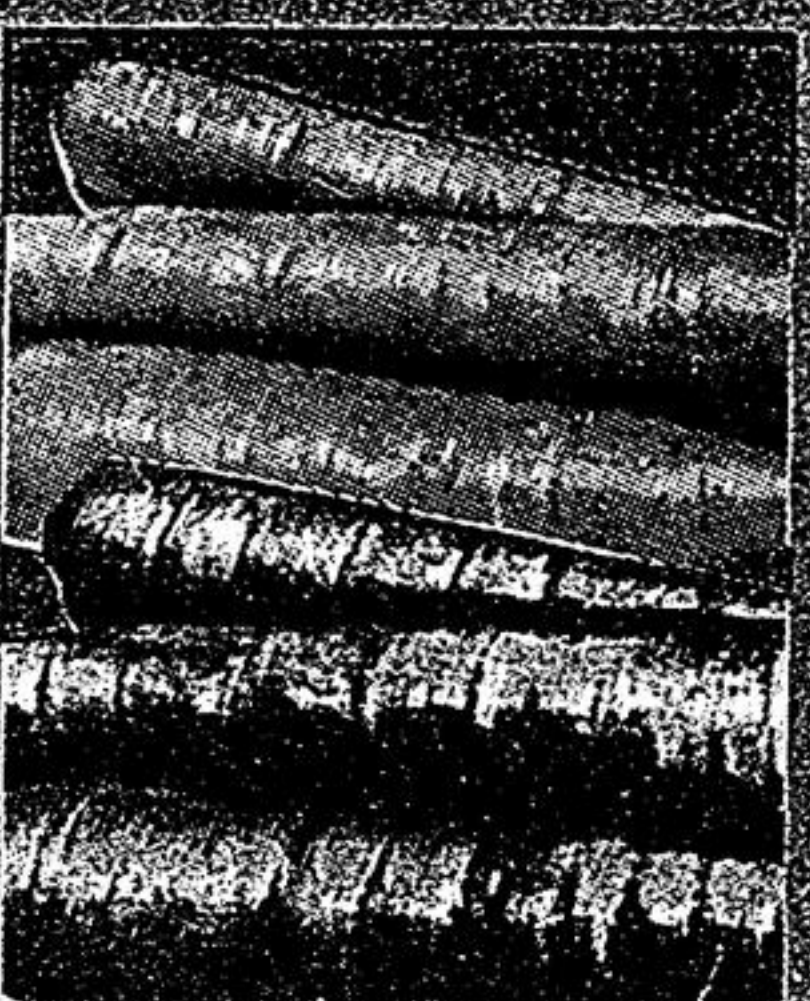
Product of Ontario  
**cooking onions**  
10 lb./bag **.99**



Product of U.S.A. Canada No. 1  
fresh, large, sweet  
**honeydew melons**  
each **.99**



Product of Ontario  
fresh, sweet  
**bartlett pears**  
**2.99**  
heaping 4 quart basket



Product of Ontario  
fresh  
**cello carrots**  
3 2 lb. bags **.99**

Product of Ontario fresh  
**pepper squash**  
3 <sup>f</sup><sub>o</sub><sup>r</sup> **.99**

Product of Ontario fresh sweet  
**green peppers**  
lb. **.49** kg 1.08

All Treat  
**potting soil**  
10 litre bag **.99**

Direct from Ontario Greenhouses decorative  
**hanging baskets**  
10" pot **6.99**



Redpath granulated  
**white sugar**  
2 kg bag **.69**  
Limit 3 bags per family purchase, please



Pepsi and 7-Up regular and diet  
**soft drinks**  
3 750 mL bottles **.99**  
plus 40c deposit per bottle  
Limit 12 bottles per family purchase, please



fresh  
**veal cutlets**  
lb. **4.49** kg 9.90



Ontario grade 'A' fresh  
**whole chickens**  
(3 to 4 lb. average)  
lb. **.99** kg 2.18

Post cereals fruit 'n' fibre and alphabets  
450 g box **2.19**

P.G. Tips tea bags  
box of 72  
Limit 3 per family purchase, please **1.99**

Devon sliced side bacon  
500 g **2.49**

Product of Norway Jarlsburg cheese  
lb. **4.99** kg 10.99

Exclusive to selected independents!  
CONAD pure Italian olive oil  
1 litre bottle **3.49**

Del Monte apple and orange juice  
3 x 250 mL packages **.99**

Olympic wieners  
450 g package **1.39**

Cut from Canada Grade 'A' beef top sirloin steaks  
lb. **3.99** kg 8.79

Fresh Daily! From Open Window Bakery assorted bagels  
That's 1/2 price! **6.99**

Fresh Teti pizza  
10" size **1.99**

Brandt's polish sausage  
lb. **1.49** kg 3.28

Bittner's bottom and eye round beef pastrami  
lb. **3.49** kg 7.69

Uncle Ben's converted rice  
2 kg bag **3.59**

Strubs Kosher dill pickles  
1 litre jar **1.99**

fresh, Ontario pork side ribs  
lb. **2.49** kg 5.49

Maple Leaf waxed bologna  
lb. **1.49** kg 3.28

SAVE 50c WITH THIS COUPON  
**Fleecy fabric softener**  
3.8 litre Jug with this coupon  
Special price without coupon...\$2.99  
**2.49**  
Only at Longo's  
Limit one per coupon per customer  
Coupon expires Sept. 22/87  
631208r

SAVE 50c WITH THIS COUPON  
**JAVEX 'Fresh Scent' bleach**  
3.8 litre Jug with this coupon  
Special price without coupon...\$1.79  
**1.29**  
Only at Longo's  
Limit one per coupon per customer  
Coupon expires Sept. 22/87  
315504r

Meyer's freshly sliced extra lean  
**cooked ham**  
lb. **1.89** kg 4.17

Ontario Grade 'A' fresh  
**chicken breasts**  
lb. **1.99** kg 4.39