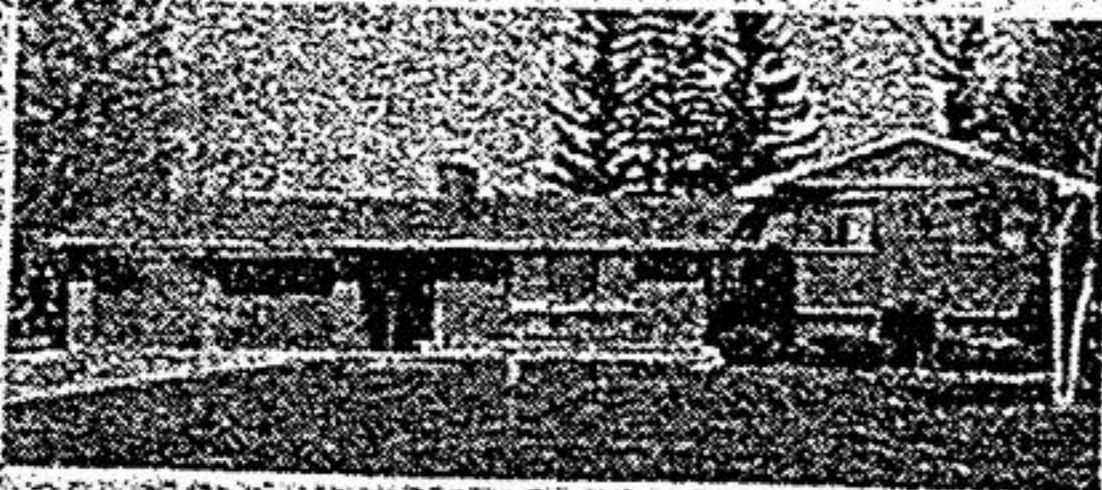


**GOODWOOD**  
**ANTIQUE BUFFS DELIGHT**  
 3 bedrooms, family room with cathedral ceiling, eat-in kitchen, country decor, just the place to display your antiques, large lot, great potential for value increase. Asking \$145,000.00. Call early!



**STOUFFVILLE**  
 3 bedroom bungalow, attached garage, finished rec room, excellent location, immediate possession. Owner anxious. Make offer.



**OAKWOOD**  
**3 BEDROOMS SIDESPLIT - A STEAL**  
 Large lot, double garage and breezeway, finished family room plus extra bedroom, eat-in kitchen, a beauty close to schools and churches. Make offer, drive a little further and save a lot. Reduced again to \$135,000.00.

JOHN M.

**Baird**  
 LIMITED  
 REALTOR

Phone 640-8260  
 Evenings 294-0672

JOHN M. BAIRD LIMITED REALTOR



**GILLESPIE**  
 REAL ESTATE SERVICES INC.  
 P.O. BOX 276, BROOKLIN LOB 1C0



BERNICE COX



**BROOKLIN OPEN HOUSES**  
 SUN. SEPT. 6TH  
 1:30 - 4:00 P.M.

**440 WINCHESTER RD., BROOKLIN**  
 Beautifully renovated Victorian Century Home in quaint village on mature 1/2 acre property, located between Hwy. #12 & Thickson Road, features antique cook stove, natural honey pine floors, trim & wainscoting, fireplace in family room, main fl. laundry & double detached garage. Reduced to \$188,900. Call Bernice Cox 427-3111 or 655-4278.

SUN. SEPT. 6TH  
 2:00 - 4:00 P.M.

**45 MONTGOMERY AVE., BROOKLIN**  
**7 DURHAM ST., BROOKLIN**

Two, 3 bedroom brick bungalows on nice large lots priced at \$142,900 and \$139,900 respectively. Follow the signs from Hwy. #12 & #7, Brooklin. Call Carolyn and Robert Hall, 655-3391 or 985-7718.

**PRIVATE SALE - STOUFFVILLE**

Detached 2 storey, centre hall plan, on premium lot (106' frontage), 4 bedrooms, 3 baths, double garage and hardwood floors throughout, finished basement with beamed ceilings and tons of storage. Fully fenced very private garden professionally landscaped with cedar deck and inground pool. \$223,000. No agents. 640-5064



ARMOUR REAL ESTATE INC.

**ANNOUNCEMENT**



ELIZABETH MATHIEU

Sue Meadows, Manager of Century 21 Armour Real Estate Incorporated is delighted to welcome Elizabeth Mathieu to the Markham Sales Team. Elizabeth Mathieu's natural enthusiasm and conscientious attitude have brought her success in the past. Her business associates, colleagues and friends can reach her for all their real estate needs at 294-2533 or 294-5559.



**COUNTRY SETTING CITY SERVICES**

Spacious 2560 sq. ft. brand new bungalow in Aurora on beautiful 1/2 acre lot, tall trees and cul-de-sac, waiting for you to enjoy. Contact Lynn Kongkham or Jim Bee at Robert Armstrong Limited Realtor: 889-7877 or 773-6287.

**AFFORDABLE**  
 Beautifully decorated, privacy fence, large deck, ensuite, French doors to living room, porch enclosure. Many inclusions & upgrades. \$188,000.

Call Dorothy Kelly  
 889-7877

**124 ACRES OF GARDENING**  
 On paved road, just west of Leslie Street, 15 minutes north of Newmarket. 2 family home 240' long storage barn, climate controlled, irrigation system, sandy soil. \$745,000. Call Bill Cuypers 895-8621 or 889-7877.

**PRIVATE - MARKHAM MAINTENANCE FREE**

Luxury End Unit Townhouse!

3 bedrooms, 3 baths, dining room, sunken living room with brick fireplace, family room with brick floor to ceiling fireplace, walk out to back and side yard, ceramic tile in foyer, private balcony off kitchen. Short walk to main street, pool & schools. \$169,900. NO AGENTS PLEASE! Call 294-6914 after 6:00 p.m.

**STOUFFVILLE MAIN STREET**

For lease - commercial space for stores, business offices, public garages, rental establishment, clinics, used car dealership, etc. 267-3965



**GERRY MEHARG LTD.**  
 Member Broker



AUDREY MCKNIGHT

**50 ACRES OR MORE VACANT**  
 50 acres, 2 road frontages, close to Durham 23.  
 100 acres, 20 m. from Newmarket.  
 Call now, ask for Audrey McKnight, res. 852-3536.

**FARMS! FARMS! FARMS!**  
 Well maintained farm, 150 acres, 2 barns, 2 homes, many extras, 20 m. to Newmarket.  
 100 acres on paved road.  
 190 acres Century Victorian house.  
 Call 852-6106. Ask for Audrey McKnight.

**FANTASTIC BUY \$88,900!**  
 Bring an offer! 1 bedroom bungalow close to all amenities in Port Perry.  
 10 acres brick bungalow, 3+ bedrooms, south Uxbridge. Call 852-6106. Ask for Audrey McKnight.

**49 ACRE HOBBY FARM**

6 room Victorian style home, modernized 3 bedrooms, 2 baths, good stone foundation barn, one of a kind, 15 min. north of Uxbridge. Priced at \$249,000. To view call Tom Doran, bus. 852-6106; res. (705) 357-3848.

**LAKE FRONT HOME \$139,000.**

3 bed. home on mature lot. Walk-out from kit. to large deck. Finished basement with walkout, 5 mins. from Uxbridge. Call Shirley deKoning 852-6106. Tor. 640-2600. Res. (705) 357-2280.

**CENTURY HOME CLAREMONT**

4 bed., large eat-in kit., main floor family room, 2 baths, mature lot with extra large double car garage. \$169,000. Call Shirley deKoning 852-6106. Tor. 640-2600. Res. (705) 357-2280.



**58 ACRE HOBBY FARM**  
 4 bed., 3200 sq. ft. home, large country kit. with island, main floor laundry, high efficiency furnace, beautiful farm setting. Uxbridge North. Call S. deKoning 852-6106. Tor. 640-2600.

(Toronto Direct) 640-4151  
 (Mt. Albert) 473-3600



114 Main Street West, Stouffville, Ontario L0H 1L0  
 "SERVING OUR COMMUNITY SINCE 1956"



**IDEAL LOCATION 16 1/2 ACRES**

Located on Vandorf & Warden, easy access to 404, 3 bdrm., brick farmhouse, barn, pond. Norma Urquhart 640-4151.



**AURORA SIDEROAD - 2 ACRES**

Superb value at \$259,900. 5 bdrm. stone & cedar, plaster construction, 2 FP, 3 baths, w/o to deck, offers seclusion + pasture in area of deluxe estate homes. Jeannine Sheridan 640-4151 or 640-4101.

**STREAM, POND, ACREAGE**

48 1/2 acres, south of Davis Drive on 2nd Conc. Uxbridge. Well treed. Invest in land. \$249,000. Norma Urquhart 640-4151 or 294-5277.



**2 ACRES QUIET LOCATION**

Superb setting on McCowan Lane showcases this well kept stone & alum. 4 bdrm. 2 storey. Quality construction. Pella windows, 2 stone FP, ensuite & more. \$364,900. Jeannine Sheridan 640-4151 or 640-4101.



**GRACIOUS SOUTHERN FARMHOUSE**

Treed 3 acre estate, over 5,000 sq. ft. of superb craftsmanship. 9 ft. ceilings on main level. Solid oak floors, wainscoting 12" baseboards, pine thruout on 3rd level. Huge bdrms. with large walk-in closets & ensuites. Indoor: Betz pool, whirl pool & sauna. One of a kind! \$699,000. Norma Urquhart 640-4151 or 294-5277.