

"Girl Next Door"

Fond memories of horse shows

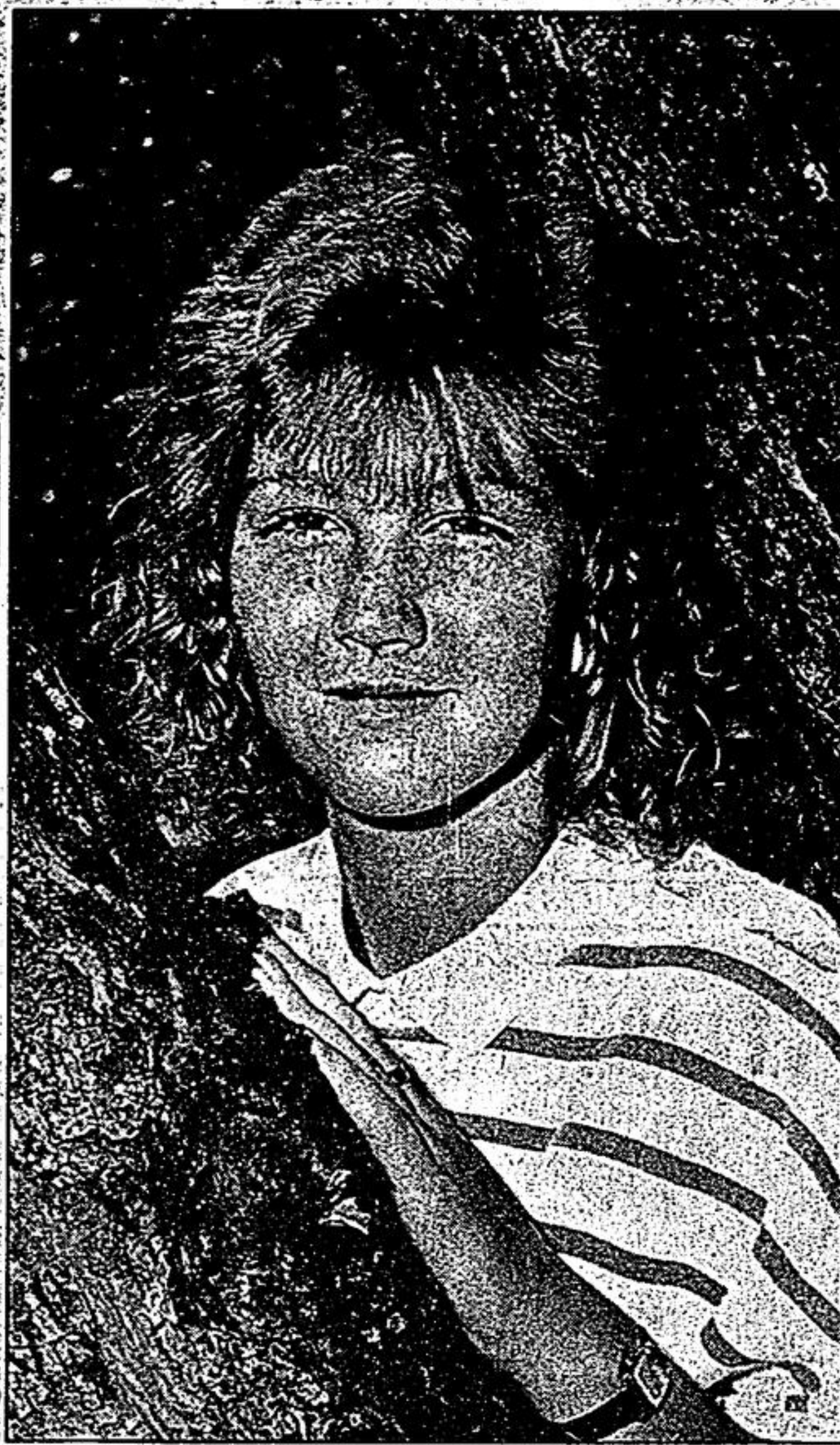
By JIM THOMAS
CEDAR VALLEY —
Seventeen-year-old Tracey Shortis of Vivian Road, R.R. 1, Cedar Valley, likes to remember the days when her parents participated in equestrian shows at the C.N.E. "We used to stay over. It was lots of fun," says the pleasant strawberry blonde. "She's our 'Girl Next Door'." Tracey has more than just memories. The family still has two horses, one a

half-Arab called 'Warrior' and a beautiful Pinto named 'Cally'. "We almost sold 'Warrior,'" says Tracey, "but we just couldn't do it." She calls them 'close pets'. When time permits, she goes riding on trails through the nearby Vivian Forest. Tracey and her parents, Paul and Betty Shortis, moved to the Cedar Valley area from Newmarket. She has a younger brother, Rob, 15. Tracey attended Prince

Charles Public School in Newmarket and later Ballantrae. With the start of the fall term, she'll enter Grade 12 at Stouffville High. Following graduation, she plans to go on to university. Although a career choice isn't definite, Tracey leans towards teaching elementary school. "I enjoy working with children," she says. Since November, Tracey's been employed as a cashier on the staff of

White Rose Nurseries, Newmarket. Recently, she and her family enjoyed a trip to the West Coast including a

stop-over at the Calgary Stampede. Tracey's looking forward to a holiday in Jamaica during March '88.



Seventeen-year-old Tracey Shortis of R.R. 1, Cedar Valley will be enrolled in Grade 12 at Stouffville Dist. Secondary School when the fall term begins next month. Following graduation she plans to go on to university, with a career in teaching a strong possibility. — Jim Thomas

Guide season to begin

STOUFFVILLE — Girl Guide registration will take place Tuesday, Sept. 8 from 7 to 8:30 p.m. in Latcham Hall. Memberships are invited for the following: BROWNIES — 6 to 9 years old (1975-1979); GUIDES — 9 to 12 years (1972-1975); PATHFINDERS — 12 and up (1972 back). The Brownies and Guides will meet at Latcham Hall. BROWNIES — 1st Pack, Tuesday, 4 to 5:30 p.m.; 2nd Pack, Monday, 6:30 to 8 p.m.; 3rd Pack, Wednesday, 4 to 5:30 p.m.; 4th Pack, Wednesday, 6:30 to 8 p.m. GUIDES — 1st Company, Tuesday, 7 to 8:30 p.m.; 2nd Company, Thursday, 4:30 to 6 p.m. PATHFINDERS — twice a month. The registration fee per girl is \$15. A voluntary assessment of \$15 per family is paid in lieu of fundraising. Girls are requested to bring used uniforms at time of registration. Parents requiring additional information are asked to call Barb Hie at 640-1653.

Diabetic lecture Sept. 14

Dear Editor: Now that almost everyone is back from summer holidays, it's time to thank the people of Whitchurch-Stouffville and Markham for their support of the Canadian Diabetes Sweepstakes. Our young branch sold \$664 in tickets, only a small portion of the over-all \$320,000, but still a welcomed start. Winners follow: First prize, a Mazda RX7; C.F. Morris, Toronto. Second prize, \$10,000 cash; Jas. Hillcoat, Thornloe. Third prize, an entertainment centre; Paul Murtha, Lindsay. Fourth prize, Eastern Airlines tickets; Mrs. Rozario, Bramalea. Fifth prize, a diamond ring; Michael Leblanc, Timmins. We appreciate The Tribune's support of our efforts. Proceeds will be used to sponsor children's camps all over Ontario and help cover the cost of information assistance that goes to all persons whose lives have been touched by diabetes. The Whitchurch-Stouffville and Markham Branch commences another year of lectures, Monday, Sept. 14 at 7:30 p.m. in Markham Dist. High School. The guest speaker is Roseanne Bernard, a registered nurse on the staff of Amhurst Medical Centre. All interested persons are welcome. Sincerely, Mrs. Lou Groff, (294-2396) Mrs. Gitta Gamm, (640-6471)

a fun summer project

Design a new flag for Markham

You are invited to design a new flag for our community. This competition is open to all Markham residents. The winning design will become the official flag of the Town of Markham. The winning entry will receive a \$500 honorarium and a proud place in our history. The new flag must make a bold, simple and memorable statement about Markham and be:

- in-harmony with Markham's history and image
 - unique and easily identifiable from a distance and in all weather conditions.
- Your design may incorporate existing imagery, such as the Town seal, or logo.

Competition Rules

1. Open to all residents of Markham, of all ages.
2. ONE entry per person.
3. Your design can be to any scale, using any graphic medium.
4. A prize of \$500 will be awarded for the best flag design, as judged by the Flag Design Committee. No entries will be returned.

Send your entry to:

Nancy Oulton
Executive Assistant to the Mayor and Council
Town of Markham
8911 Woodbine Avenue
Markham, Ontario
L3R 1A1

Entries must be received by
September 30, 1987

design a new flag for MARKHAM

A&P CORRECTION

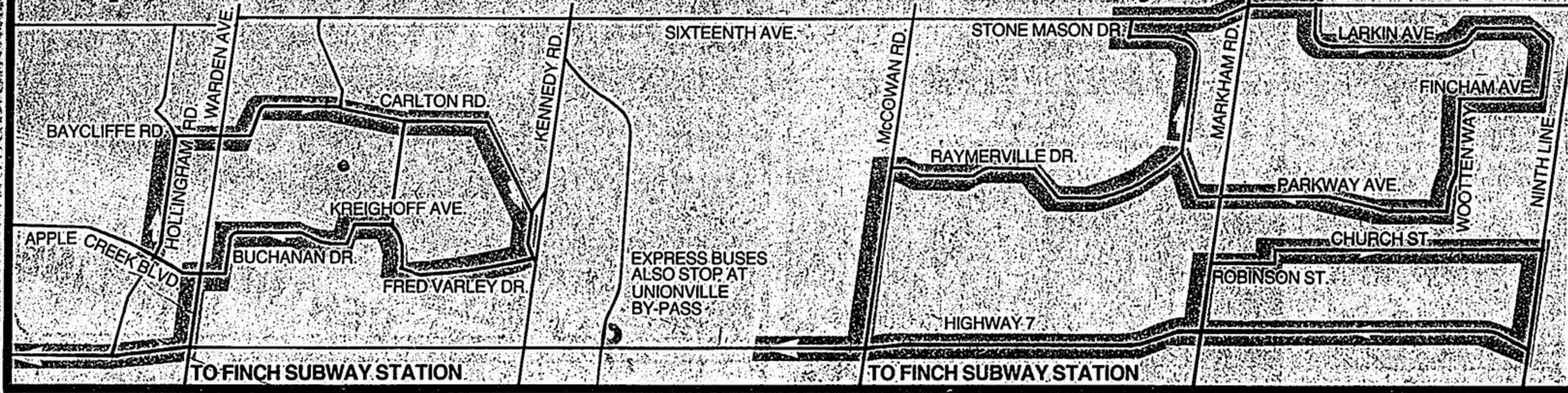
For A&P Flyer distributed for week ending Aug. 29, 1987.

Tropical Plants incorrectly advertised. Should read: Product of Canada, Hanging Baskets, Assorted Tropical Plants - 10' Pot.

\$9.99

New Reasons To Ride

Express Routes to and from Finch Subway



- On Tuesday, September 8th, Markham Transit will begin operating new express bus services from the Markham-Unionville area to the Finch subway station. The Express buses will operate on the routes shown above during weekday rush periods.
- In the morning, you can catch the bus as it loops through any one of these residential areas to get to Finch station. No transfers are required at Highway 7; the same bus takes you right to the subway.

- During the afternoon rush, the buses will run express from Finch station to different points on Highway 7 and then loop through the residential areas.
- A slightly higher fare is being charged for this express service. Tickets will be available at the regular outlets (10 for \$11.00), or you can pay an exact cash fare of \$1.25 per trip — still a bargain.
- For further information, call Markham Transit at 475-4888.

MARKHAM