

Century 21

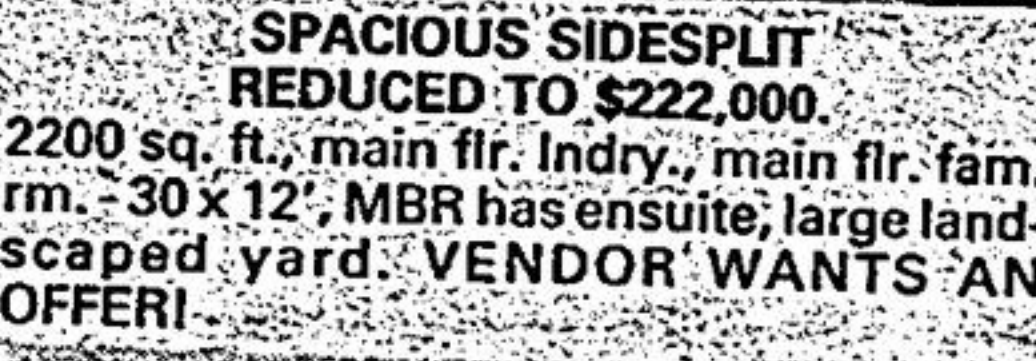
GERRY MEHARG LTD.
Member Broker



Kim Reesor



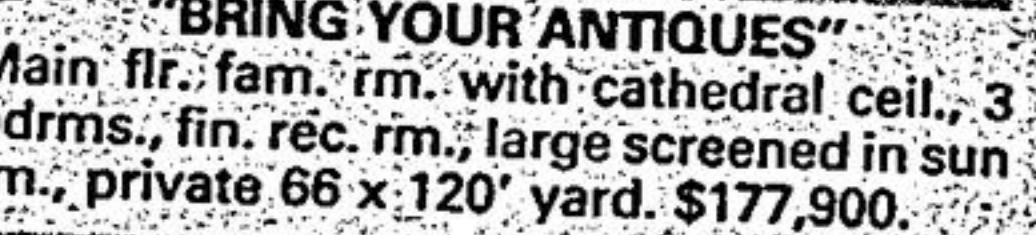
RANCH STYLE BUNGALOW
3 bdrms., hardwood flrs., 5 appliances, fin. basement, private yard, pleasure to show \$172,900.



SPACIOUS SIDESPLIT
REDUCED TO \$222,000
2200 sq. ft., main flr. Indry., main flr. fam. rm., 30' x 12', MBR has ensuite, large landscaped yard. **VENDOR WANTS AN OFFER!**



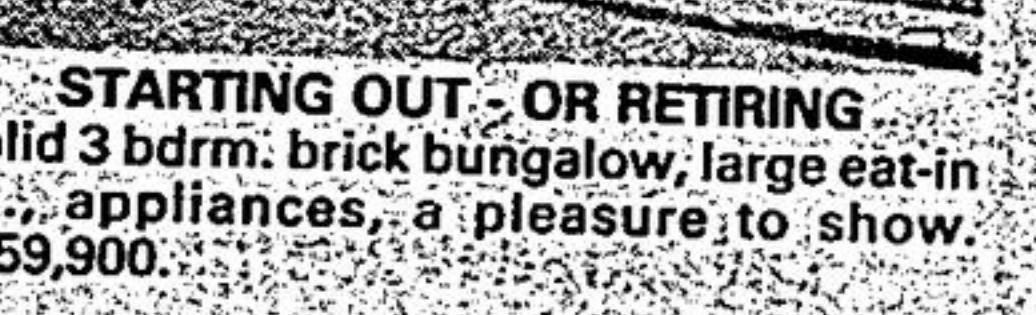
"NOTHING TO DO BUT MOVE IN"
Dir. Main St. East to Spring St., 3 large bdrms., fin. rec. rm., built in wall unit, FP, 3 baths, central air & vac, quiet court location. \$188,500. See you there!



"BRING YOUR ANTIQUES"
Main flr. fam. rm. with cathedral ceil., 3 bdrms., fin. rec. rm., large screened in sun rm., private 66' x 120' yard. \$177,900.



"LIKE TO RENOVATE!"
Older area of town, 3 bdrms., main flr. fam. rm., large treed lot.

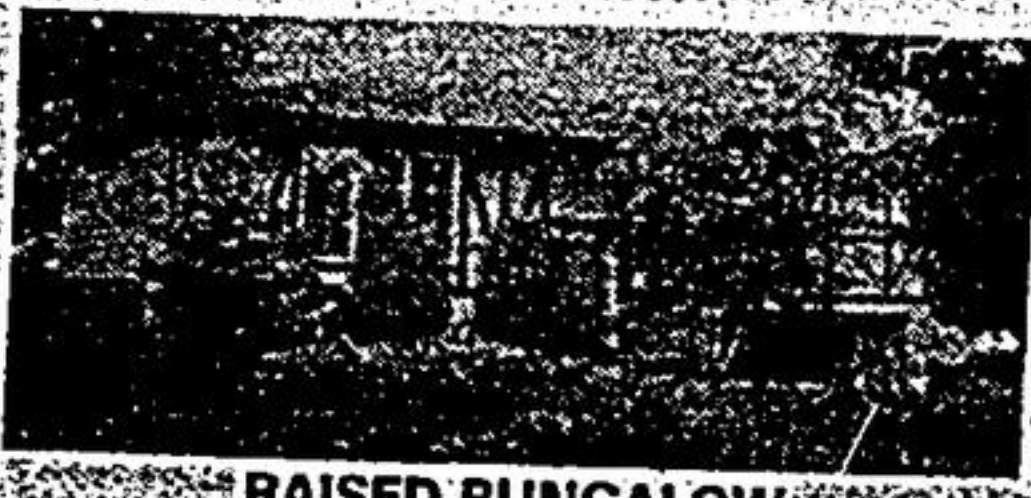


STARTING OUT - OR RETIRING
Solid 3 bdrm. brick bungalow, large eat-in kit., appliances, a pleasure to show. \$159,900.

CALL TO SEE KIM REESOR - OFF. 640-3131, RES. 640-4138



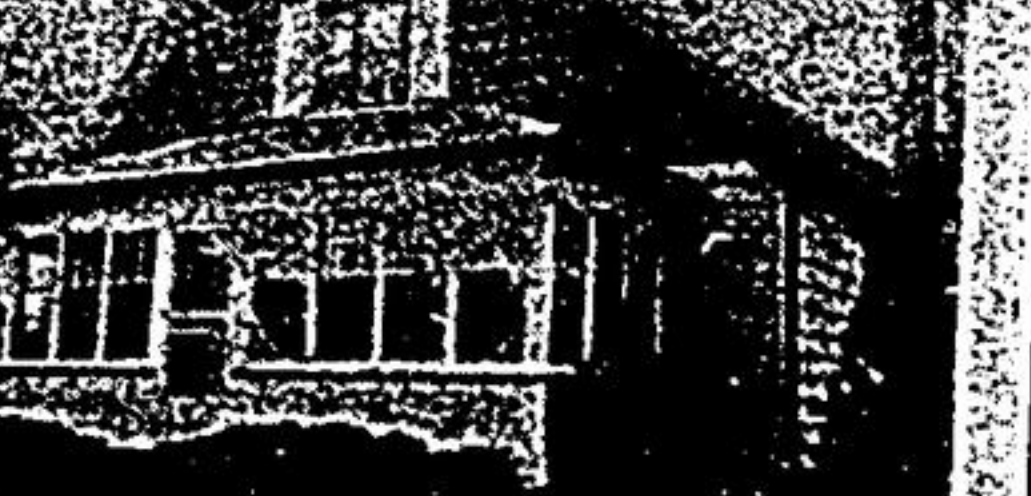
MARGO GREENAWAY



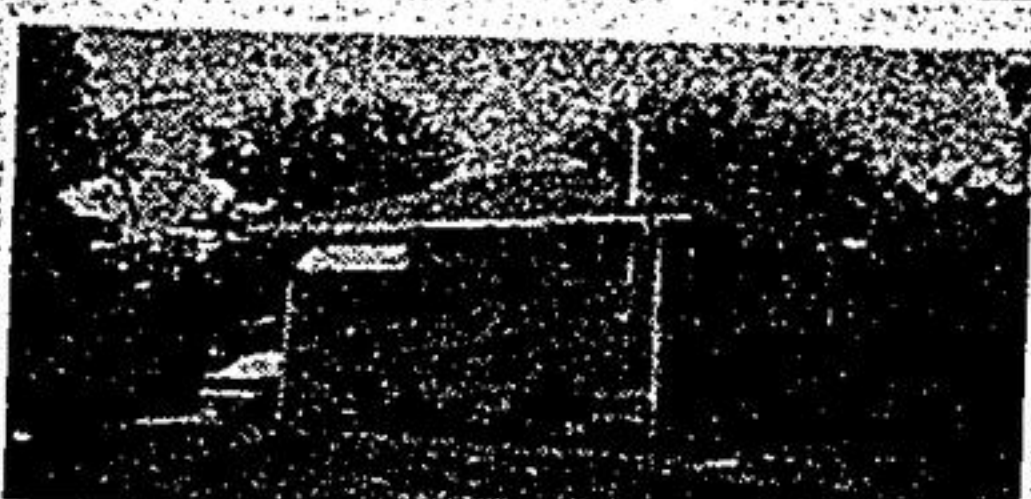
RAISED BUNGALOW
3 bdrm. raised bungalow, maint. free, w/o from kit. to fenced yd. with mature landscaping. Rec. rm. with wet bar. Work shop in large dble. garage, sep. entrance to lower area — allows for in-law apart. \$179,000. Call Margo Greenaway, off. 640-3131 or 473-1970.

BUILDING LOTS
Kirkfield
76 acres — 2300' frontage \$54,900
13 acres — \$25,000
14 acres — \$26,000

Mount Albert
50' x 115' on Royal Oak Dr.
200' x 127' irreg. on Durham 30
Call Margo Greenaway, off. 640-3131 or 473-1979.



COME TO MT. ALBERT \$144,900
For quiet, safe & country — like living. Close Toronto commuting, 1 1/2 storey charmer — large colonial kit., Sun porch, back porch, deck, wood flr., new bath, & wiring. Lot 75' x 230'. This property is well kept in good cond. It won't last. Call Margo Greenaway, off. 640-3131 or 473-1979.



HEART OF STOUFFVILLE \$158,000
3 bdrm. brick bung., garage, 1 1/2 baths, in beautiful condition. Owner wants to settle estate. Don't wait. Call Frank or Conny Hippmann today. 640-3131, res. 640-1149.

1 ACRE + BUNGALOW
Room for the small barn you always wanted. Spotless 3 bdrm. bung. plus den & fin. rec. rm. Hwy 48 & Aurora Rd. area. Asking \$218,000. Call Frank or Conny Hippmann, off. 640-3131, res. 640-1149.



MAIN STREET INVESTMENT!
Commercial property in the heart of downtown Stouffville. Very busy location! Call Ross Hetherington, off. 640-3131, res. 640-2441.

APSLEY
Wolf Lake, 2 lots, road, S.W. exposure \$33,000. each. Call Brian Meharg, off. 640-3131, res. 640-3064.

LEGAL DUPLEX
Own and rent this Stouffville duplex, then enjoy the excellent returns on this maintenance free property. Large lot 60' x 170'. For a showing call, Rodney King, off. 640-3131.

O'BRIEN AVENUE
How about the last bldg. lot on O'Brien Ave. Full town services, and has a driveway. Asking \$89,000. Rodney King, off. 640-3131.



TASTEFULLY FINISHED

Bungalow in very desirable area in Stouffville. Basement finished, central air conditioning, deck, high eff. furn. Floor-to-ceiling basement fireplace, large deck. Many other features.

\$193,000
640-4591



SAVE \$25,000 & COMMISSION
2600 sq. ft. house in demand area (Raymerville & Hwy. #48). Fully fenced 60' front 80' back 4 large bedrooms master suite. Double door entrance, 2 car garage, 6 pce., 4 pce., 2 pce., and shower, laundry room fireplace in family room. Large kitchen w/o from kitchen and family room. Large living room and dining room. \$244,900. Call 294-4931 anytime. Owner moving. Don't Miss It.



Re/Max Scugog Realty Ltd. Rltr.



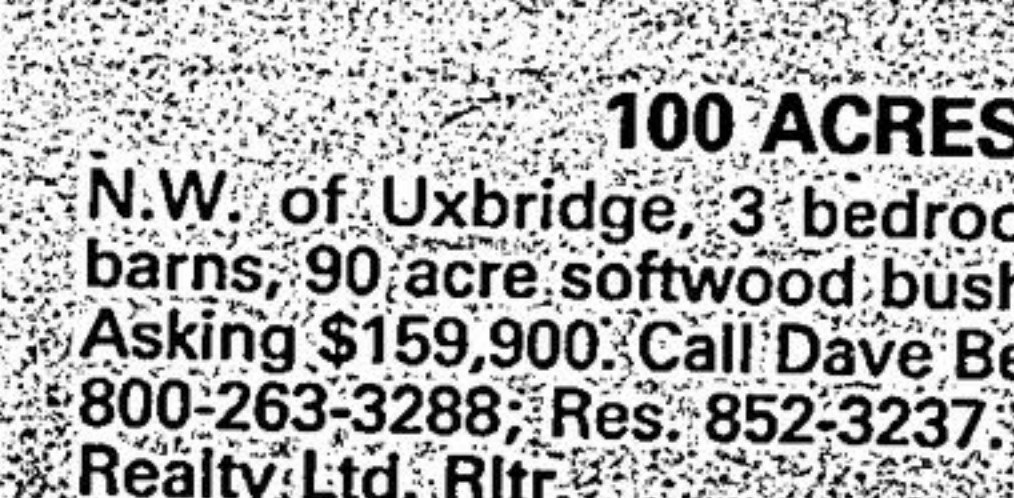
Re/Max Imperial Realty Ltd. Rltr.



CANNINGTON STARTER
Small 1 bedroom bungalow on town services, 52' x 165' lot single detached garage. Asking \$49,900. Home needs addition. Call Dave Beare 640-6755, 1-800-263-3288; Res. 852-3237. Re/Max Scugog Realty Ltd. Rltr.



DAVE BEARE



100 ACRES
N.W. of Uxbridge, 3 bedroom bungalow, 2 barns, 90 acre softwood bush, 10 acres clear. Asking \$159,900. Call Dave Beare 640-6755, 1-800-263-3288; Res. 852-3237. Re/Max Scugog Realty Ltd. Rltr.

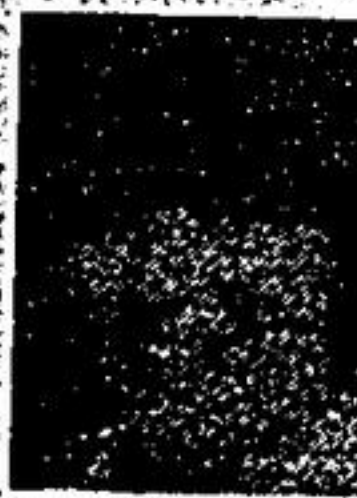


DAVE BEARE

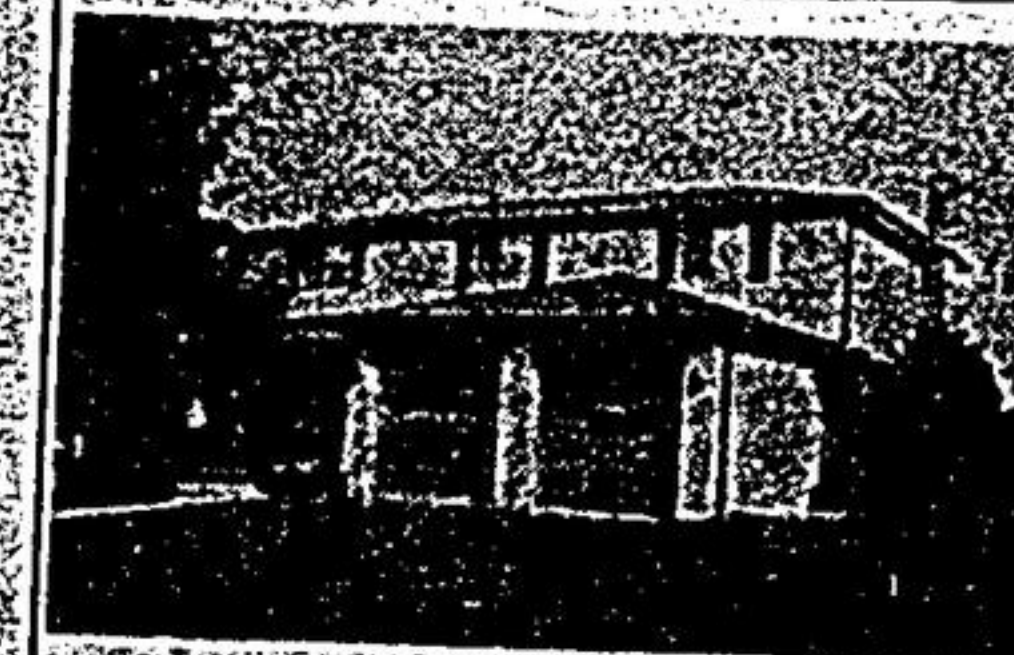


COUNTRY LIVING
EDGE OF TOWN
Three bedroom bungalow backing onto farmland. Cathedral ceilings, large windows, walkout

to wrap-around deck. Two full baths. Partly finished basement offers terrific potential for 3 bedroom in-law apartment with separate entrance. Just listed. Asking \$143,000. Uxbridge. Call Anne Powell 640-6755, 1-800-263-3288, res. 852-5450. Re/Max Scugog Realty Ltd. Rltr.



ANNE POWELL

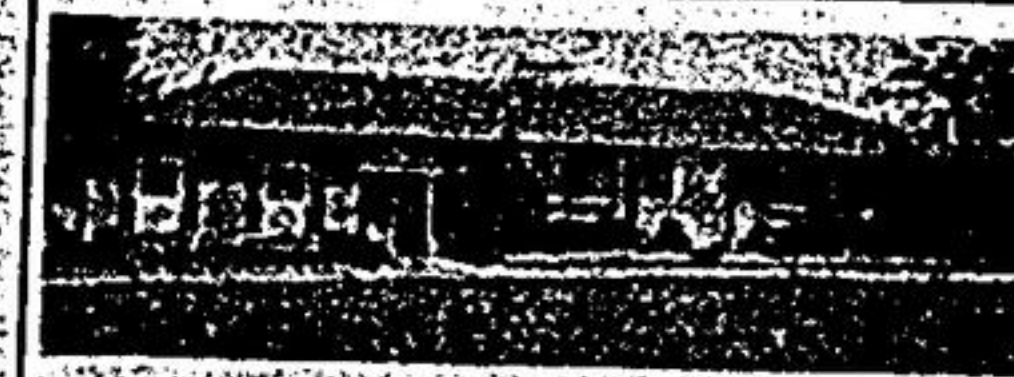


TOTALLY FINISHED
4 bedrooms, 4 baths, 2 fireplaces, large lot move into a well established Markham neighborhood. Call Ronald L. Good. Re/Max/Imperial Realty Ltd. 640-4960.

to wrap-around deck. Two full baths. Partly finished basement offers terrific potential for 3 bedroom in-law apartment with separate entrance. Just listed. Asking \$143,000. Uxbridge. Call Anne Powell 640-6755, 1-800-263-3288, res. 852-5450. Re/Max Scugog Realty Ltd. Rltr.



RON GOOD



SAVE SOME GOLD — MUST BE SOLD!
Uxbridge, custom rancher, sprawled across 1/2 acre. Features include:

Cathedral ceilings, 5 walkouts, 2 1/2 baths, 2 fireplaces, island kitchen, oversized garage, circular drive, indoor pool. List \$219,000. End of August possession. Call Lee Weldon 640-6755/1-800-263-3288; Res. 640-2770. Re/Max Scugog Realty Ltd. Rltr.



LEE WELDON



NATURE STUDY — N.E. GOODWOOD

Private artist's retreat, custom bungalow, 2 fireplaces, walkout basement, southern exposure at its finest, spring pond and stream. Immaculate. First time offered. Special! Call Lee Weldon 640-6755/1-800-263-3288; Res. 640-2770. Re/Max Scugog Realty Ltd. Rltr.



LEE WELDON