

## Reunited

**HEISE HILL**—The Levi Heise family reunion was held July 25 at Heise Hill Church, R.R. 2, Gormley. One hundred and twenty sat down to dinner.

Levi Heise, (1864-1956), was born and lived all his life at Lot 26, Conc. 3 East, Markham Township, (Victoria Square).

Grandchildren attending were — Milton and Katie Heise, Borrego Springs, California; Orville and Margaret Heise, Auburn, Indiana; Mrs. Anna Heise, Lis-towel; Arthur and Verna Heise, Wainfleet; Carl and Lillian Heise, Paso Robles, California; Luella Lofthouse and Marjorie Heise, Parkview Village, Stouffville; Roy and Miriam Wenger, Carlisle, Pennsylvania; Harold and Verna Heise, Parkview Village, Stouffville; Lewis and Verna Heise, Magnetewan; John and Anna Reesor, Magnetewan; Mrs. Lois Winger, Syracuse, New York; Harvey and Erma Sider, Ft. Erie; Merlin and Naomi Marr, Hagersville and Clarence and Ardys Heise, San Diego, California.

A highlight of the day was an address delivered by Ardys Heise on the subject of "Heise's Before 1800". She also explained the family crest discovered on her trip to Europe.

## Faces charge

**UNIONVILLE**—A Unionville man, charged in the shooting of a Peterborough police officer, will appear in court today.

Joseph Calladine, 20, turned himself into York Regional Police June 20 after a nation-wide manhunt.

He faces a charge of attempted murder.

Ontario Provincial Police are still investigating the unexplained late-night shoot-out at a Peterborough gas station in which Constable Mike Dennis was gunned down.

# Community Calendar

The Tribune's *Community Focus* section publishes a weekly Calendar listing upcoming events in the area. Individuals or groups wishing to use this free service should contact 640-2100 or 649-2292 no later than 12 noon on the Monday preceding publication.

### Fri. July 31

**STOUFFVILLE NEIGHBORS GROUP** meets Fridays from 9:30 to 11 a.m. in the basement of Memorial Christian Church, located at the corner of Main and Stouffer St. North. Participants enjoy crafts, coffee and conversation. Babysitting is provided for a suggested donation of \$1. For more details contact Maureen Hizaka at 640-7595.

### Mon. Aug. 3

**SKATEBOARDING** is featured in the Whitchurch-Stouffville Recreation Complex Mondays from 6 to 8 p.m. Admission is \$1 for those aged 12 and under, and \$1.50 for those 13 or over. All participants are required to supply their own skateboard and safety equipment, especially helmets and pads. More information is available at 640-6527.

### Tues. Aug. 4

**ROLLERSKATING PROGRAM** runs at the Rec. Complex Tuesday and Thursday evenings from 7 to 9 p.m. Families are encouraged to participate on Tuesdays, while teenagers are in Thursdays. Cost ranges from \$1 for children (with own

skates) to \$3.25 for adults and teens (admission and skate rental).

### Wed. Aug. 5

**MARKHAM/UNIONVILLE CHAPTER OF B'NAI BRITH WOMEN** meet every second Wednesday. Contact Ellen Covent at 477-4533 for more details.

**STOUFFVILLE RECREATION DEPARTMENT** presents a trip to the Ontario Place Forum for youths ages 13 and over. Departure time is 6:00 p.m. Cost is admission to Ontario Place — \$5. Transportation is sponsored by McNeil Pharmaceutical. For details, call 640-6528.

### Mon. Aug. 10

**VACATION BIBLE SCHOOL** will be held Aug. 10-14 at Stouffville Baptist Church from 6:45 to 8:45 p.m. The program, for ages 5 and up, features bible stories, songs, games and prizes, crafts, plus *Magic with a Message* show by Christian illusionist Murray McMullen.

### Sat. Aug. 15

**BALLANTRAE & DISTRICT LIONS CLUB** hosts its annual Beef Roast from 2 to 9 p.m. at the Whitchurch Centennial Centre. Roast beef is scheduled from 5 to 7 p.m. at a cost of \$6 for adults and \$4 for children. Activities include hot-air balloon and helicopter rides. Event proceeds go to community projects.



LET US PUT YOU IN THE PICTURE BOOK NOW FOR FALL or SPRING INSTALLATION

INGROUND, FROM \$895.

**MARKHAM POOLS**

HWY. 48, (1/4 MILE N. OF 16TH AVE.)  
294-8420



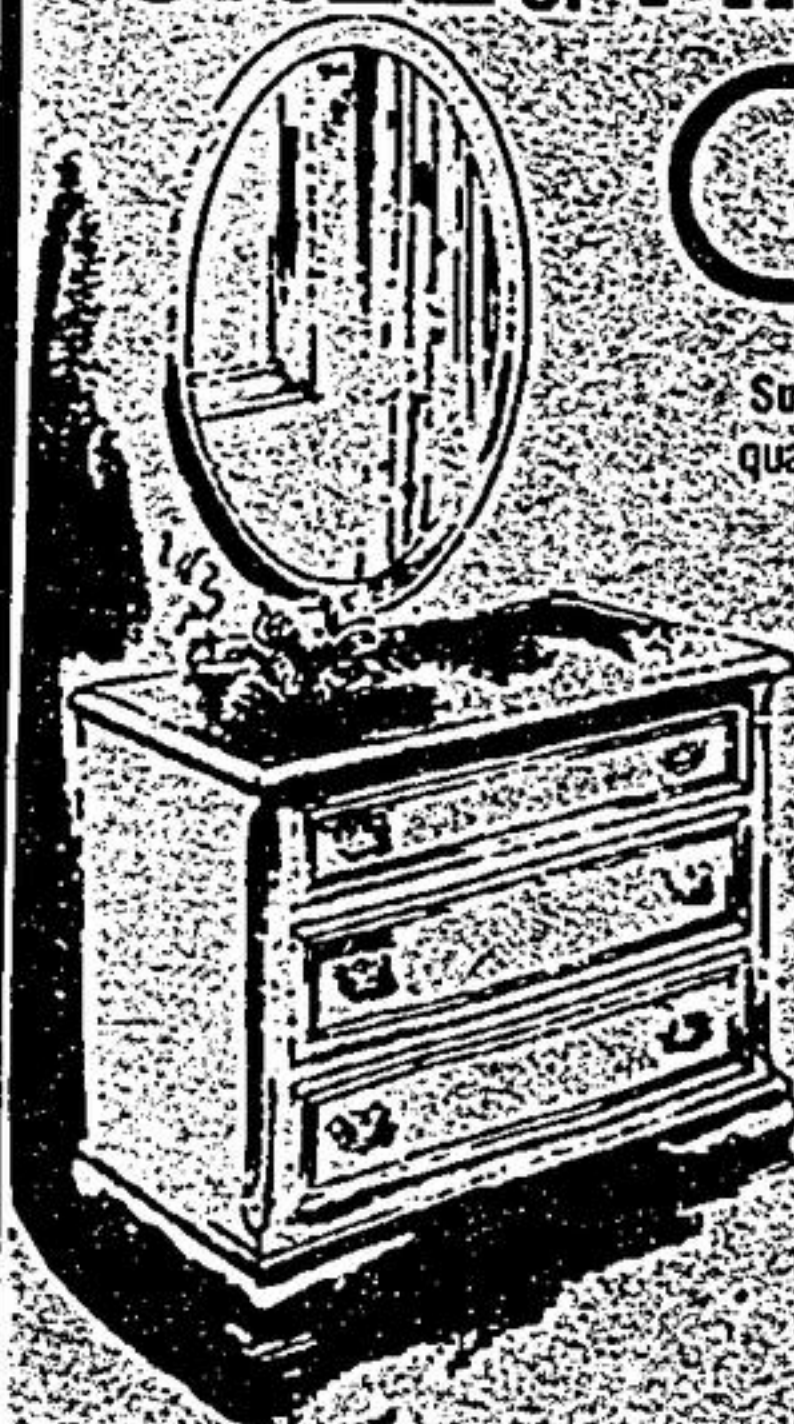
Book Now For Late Summer/Early Fall In-Ground Installations

**THOMPSON'S**

*Summer Clearance*

SALE OF FINE FURNITURE

STARTS TODAY



Substantial savings on Thompson's entire stock of fine quality brand name furniture, manufactured by Gibbard, Kaufman, Krug, Dedcraft, Vilas, Strathroy, Simmons, Barrymore, Cooper and many other top Canadian furniture companies. Special savings on lamps, pictures and giftware.

**GIBBARD**



FEATURING:  
GIBBARD CANADIAN LEGACY  
in the ageless elegance of solid Honduras Mahogany or in the rich tones of Genuine Cherry



**THOMPSON'S**  
FINE FURNITURE

FREE DELIVERY  
TERMS: CASH  
VISA OR  
MASTERCARD

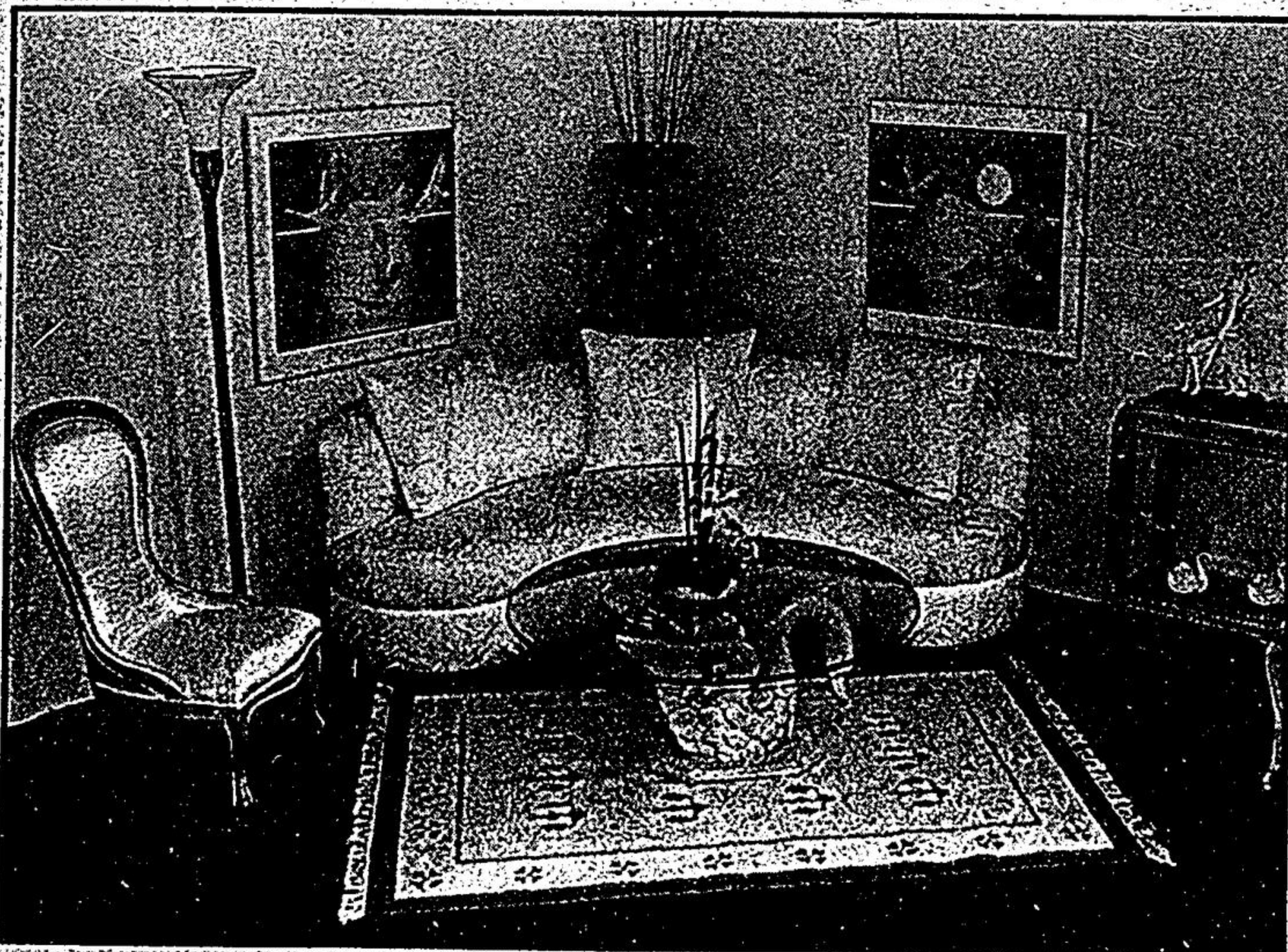
16 YONGE ST. SOUTH AURORA 727-9428 CLOSED  
OPEN THURSDAY AND FRIDAY TILL 9 P.M. SATURDAY TILL 5 MONDAY

# Designers Gallery of Fine Furniture LTD.

"FOR THOSE THAT  
VALUE EXCELLENCE"

We Offer:

- Latest styles of furniture
- Over 2000 fabrics to choose from
- Custom-made tables with over 100 different colours to choose
- Glass — cut to any size or thickness: Clear - Bronze - Grey
- Interior decorators on staff



1. Bring measurements, notes and swatches to *Designers* and leisurely browse through our vast array of model rooms, making note of styles, colours and sale prices.
2. Sit down with one of our experienced design consultants, and over a cup of coffee, discuss your ideas, needs and budget requirements.
3. Using your ideas, we will arrive at the room plan you desire. We will professionally co-ordinate room layout, styles and colours and work within your budget. *Designers* large assortment of furniture enables us to work within a wide range of budgets, whether it be a \$1,000 room or a \$10,000 room. There is no charge or obligation for in-store decorating service.
4. We also do "in-home" consultations, by appointment only. There is a small charge for this service.

1187 KENNEDY RD.  
SCARBOROUGH  
752-1402

760A DUNDAS ST. E.  
MISSISSAUGA  
897-2522

2273 DUNDAS ST. W.  
MISSISSAUGA  
828-2088