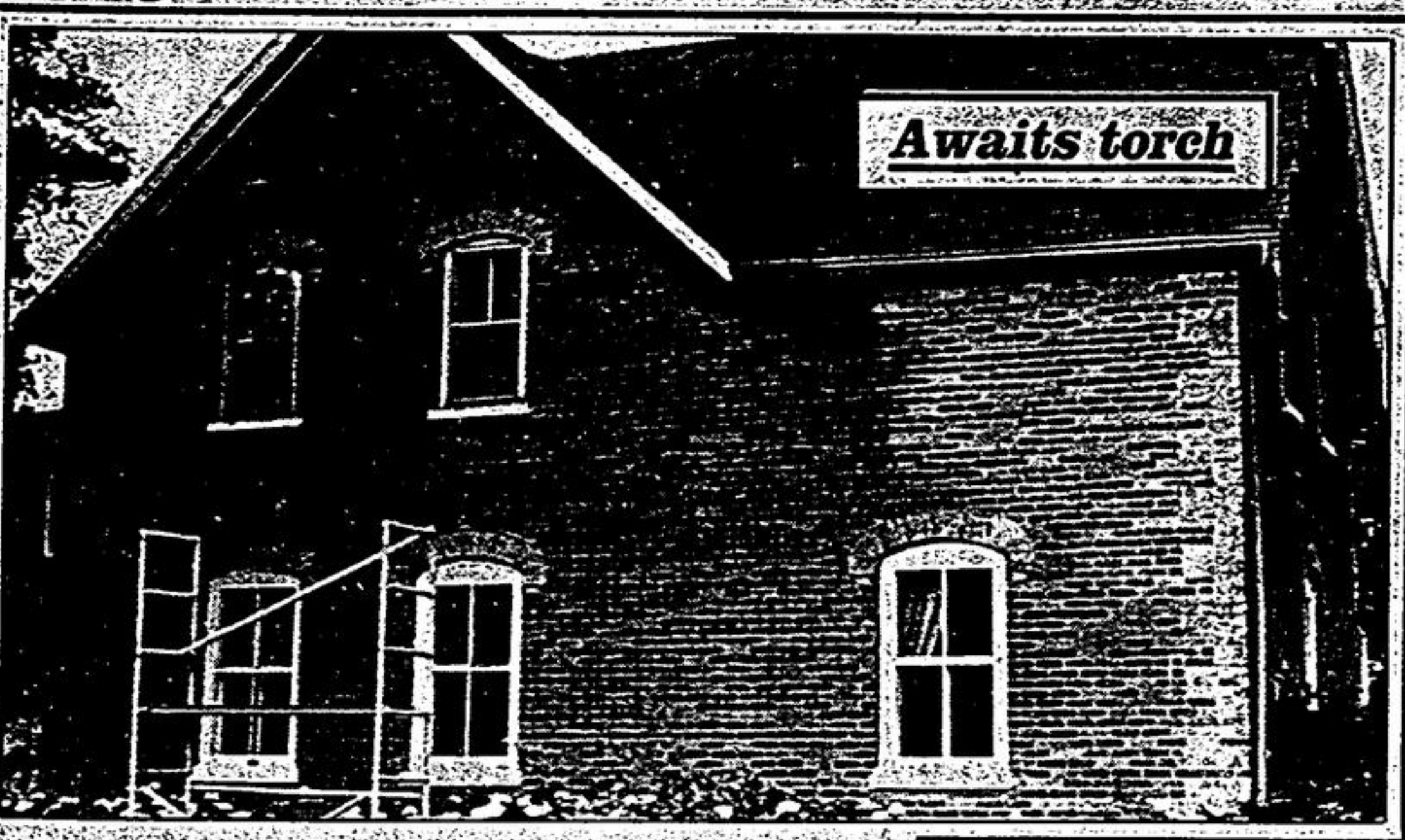


Days numbered for farmhouse



This farmhouse on expropriated Pickering Airport property, located at the corner of Sideline 32 and Durham Region Road 5 (Conc. 9), is slated to be burned to the ground later this month as part of a Canadian feature film being shot on location. However, some area residents, including Stouffville's Joe Nighswander, who lived in the country residence with his family for 20 years, feel it could be repaired at reasonable cost. Federal government officials claim the house is a safety hazard and must be removed.

— Chris Shanahan

Horse day

GREENWOOD — Pickering Museum Village volunteers will turn back a page in history this Sunday (July 26) during Pioneer Horse Day.

Scheduled events, which run from 11 a.m. to 5 p.m., include harness-making, horse-shoeing and side-saddle demonstrations, wagon rides, pony rides, plus heritage crafts such as wheel-throwing, pottery, splint basketry, weaving, spinning and sheep shearing. There'll also be an old-time fiddling display.

The Greenwood museum, located three kilometres east of Brock Rd. on Hwy. 7, also features a gift shop, refreshments and a picnic area. Parking is free.

Show admission is \$2 for adults, \$1.25 for senior citizens and students, 75 cents for children aged 5 to 12, pre-schoolers free and \$5 for families (two adults and children under 18).

For more information, contact 683-8401 or 683-2760.

LET US PUT YOU IN THE PICTURE BOOK NOW FOR FALL or SPRING INSTALLATION INGROUND, FROM \$895.

MARKHAM POOLS
HWY. 48, (1/4 MILE N. OF 16TH AVE.)
294-8420

Book Now For Late Summer/Early Fall In-Ground Installations

GOING ON VACATION? PROTECT YOUR PROPERTY WITH HOME VIDEO INVENTORY

An inexpensive way to accurately record your household possessions in case of loss due to fire, theft, etc.

OTHER SERVICES AVAILABLE:

- HOME MOVIE TO VIDEO TRANSFER
- WEDDING VIDEO SERVICES (July & August bookings still available)
- SPECIAL EVENTS VIDEOTAPING (Parties, Baptisms, Sports Events, Etc.)

For more information call: **895-7650**

SPECIAL DAY PRODUCTIONS NEWMARKET

THE CORPORATION OF THE TOWN OF MARKHAM NOTICE

Changing of certain street names within the Town of Markham

TAKE NOTICE THAT the Council of the Corporation of the Town of Markham intends to change the following street names as outlined hereunder:

Former Name	Proposed New Name
Kennedy Road (existing disconnected section south of Highway 7 resulting from the construction of the Unionville By-Pass)	Main Street Unionville
Kennedy Road (existing section between Steeles Avenue and Denison Street)	Old Kennedy Road
Main Street North (Markham) from Highway 7 to 16th Avenue	Main Street Markham North
Main Street South (Markham) (From Highway 7 south to Princess Street)	Main Street Markham South
Main Street (Unionville)	Main Street Unionville
Wellington Street (from McCowan Road to the Ninth Line)	Highway 7

Please note for information purposes that the Council of the Regional Municipality of York has approved of:

- the changing of the name "Unionville By-Pass" to "Kennedy Road";
- The naming of the realignment of Kennedy Road north of Steeles Avenue which connects with Kennedy Road in the City of Scarborough as Kennedy Road.

A copy of the map showing the proposed street name changes as outlined herein may be seen in my office in the Municipal Building at 8911 Woodbine Avenue, Buttonville, Ontario, during normal business hours.

The Council of the Corporation of the Town of Markham shall hear in person or by his/her Counsel, Solicitor or agent, any person who claims that his/her lands will be prejudicially affected by the by-laws to change such street names and applies to be heard at a hearing to be held on Tuesday, August 18th, 1987 in the Council Chambers of the Municipal Building at 8911 Woodbine Avenue, Buttonville, at the hour of 7:30 p.m. or as soon as possible thereafter.

Christine Palmer, (Mrs.)
Deputy Clerk.

Published a third time this 22nd day of July, 1987.

NEW CONDOMINIUMS FOR SALE

- First Time Offered
- 30,000 sq. ft. Multiple Bldg.
- Condo Units from 1,500 sq. ft. & up
- 10% Finished Office, Ample Parking
- Suit All Growing Industry
- Office, Warehouse Uses, Shipping
- At 220 Industrial Parkway
- Aurora

CALL M. DOSMAN

william gruber REAL ESTATE LIMITED - REALTOR

95 BARBER GREENE RD. DON MILLS, ONTARIO M3C 3E9

445-4664

THE WALLPAPER CENTRE

DOLLAR DAYS Sale

Children's BORDERS Country FROM \$1 Roll	Brand Name VINYL COATED Reg. to '25 \$3 Met. Dble.	Latest Selection VINYL COATED Reg. to '25 \$4 Met. Dble.
Children's WALL PAPER Reg. to '25 \$5 Met. Dble.	Brand Names SOLID VINYL Reg. to '35 \$6 Met. Dble.	Tile Patterns BLOWN VINYL Reg. to '40 \$12 Met. Dble.

SAVE UP TO 75% & MORE!

OUR GREAT SALE CONTINUES

Buy One Get One FREE

ON A LARGE IN-STOCK SELECTION

COUNTRY PRINTS MATCHING BORDERS

OSHAWA 140 SIMCOE ST. S. (Corner John) 579-1655	AJAX 37 HARWOOD AVE. N. (Just N. of Hwy. 401) 686-0719	SCARBORO 793 MARKHAM RD. (In the Painted Post Plaza) (Just N. of Lawrence) 431-4458
---	--	--

OPEN THURSDAY & FRIDAY NIGHTS UNTIL 9 P.M.

GRAND OPENING

HOJ MARKHAM

SECOND LOCATION

LEASING SPECIAL '87 Cutlass Ciera \$259⁰⁰ 3 mth. Free Air and more	RENTAL SPECIAL Dodge Expo/Mazda 323 \$10 a day CDW and km's extra Offer valid until Aug. 15/87 Markham Locations Only!
---	---

Two Locations now serving Markham

600 Hwy. 7 East Parkway Hotel 266 Wellington St. W. McCowan & Hwy. 7

764-5333 471-1966

White Rose TREES, SHRUBS & EVERGREENS

REDUCED 10% 25% 50%

ROSE FESTIVAL SAVINGS

THE BEAUTY OF YOUR FAVOURITE SHRUB CAN NOW BE YOURS AT A ONCE A YEAR SAVING! HURRY IN, SALE ENDS JULY 26, 87

OUR ENTIRE SELECTION OF 1st. QUALITY NURSERY STOCK IS ON SALE! ALL CONTAINER GROWN TO GUARANTEE SUCCESS!

1/2 PRICE BLUE SPRUCE Beautiful symmetrically shaped tree. Bluish-green thick needles. Does best in sunshine & well drained dry locations. 15-18" SALE 4.99 Our Reg. 9.98	1/2 PRICE EVERBLOOMING JACKMANII POTENTILLA More spreading & larger than Gold Drop. Abundant of primrose yellow flowers. 18-24" SALE 3.49 Our Reg. 6.98
40% OFF PURPLE SAND-CHERRY STANDARD Brilliant, hardy reddish purple leaves & bark with pink flowers in Spring. SALE 20.94 Our reg. 39.90	25% OFF PERENNIAL DAY LILIES Easy to grow in almost any soil. Vigorous for quick flowers. Assorted colours. SALE 1.88 Our reg. 2.49
30% OFF GOLDFLAME HONEYSUCKLE Everblooming clusters of showy pink trumpet shaped flowers. Slightly fragrant. In sun or half shade. SALE 4.88 Our Reg. 6.98	1/2 PRICE SILVER MAPLE An ideal lawn specimen. Extremely vigorous for quick shade. 6-8' tall. SALE 9.88 Our Reg. 19.95

SAVE 25% OFF ALL GRAPES, FLOWERING CRABTREES & PRESTONIAN LILACS!

SAVE 30% OFF ROBUSTA JUNIPERS & FLOWERING HAWTHORNS!

MUMS

PERFECT FOR ANY ROOM! Cheerful, long-lasting mums. In your choice of yellow, white, mauve & bronze flowers.

DELUXE 5' PARK BENCH

Enjoy your rose garden on this beautifully designed park bench. Ornate black wrought iron ends. Sturdy hardwood slats. (Assembly required).

ONLY 132.88

SALE 144
Our Reg. 2.99 ea.

Festival of ROSES

OPEN HOUSE JULY 24th and 25th.

Sandon Farm, 4th Line, Uxbridge 10 a.m. to 4 p.m.

Come for the day and drive through Southern Ontario's most beautiful countryside. Enjoy guided tours of our Nursery and Rose Fields. Over 200,000 beautiful colourful roses!

- Meet our White Rose gardening experts, get helpful tips. Meet the President & founder of White Rose, Alex Raab.
- See the miracle of modern agriculture, where 1-acre of production now yields as much as that produced on 30 acres only 10 years ago.
- See how 30 acres of top soil 6" deep can be produced from wood shavings every 6 months.
- Witness demonstrations of skillful grafters and rose tree buffers.
- Enjoy Free Ontario grown Corn on the cob and refreshing country Spring water
- Coffee, tea & light lunches will be available at a small cost from caterers, or pack a lunch and relax at our scenic picnic area.
- If you plan to bring a group, please let us know so we can make arrangements for bus parking.
- For more information contact your nearest White Rose or call 477-3330

A DAY TO REMEMBER!

ONLY WHILE QUANTITIES LAST! Monday to Friday 9:00a.m. - 6:00p.m. Sat., Sun., & Holidays 9:00a.m. - 6:00p.m.

PATIO FURNITURE NOT SOLD ON SUNDAYS OR HOLIDAYS

SALE ENDS JULY 26, 1987

UNIONVILLE NEWMARKET

4038 #7 HWY. 55 Yonge St. S.

ALL WHITE ROSE LOCATIONS WILL REMAIN OPEN DURING THE FESTIVAL FOR YOUR CONVENIENCE!

MARKHAM