

Economist/Tribune showcase



NORMA LARKIN



GERRY MEHARG LTD.
Member Broker



FOR RENT

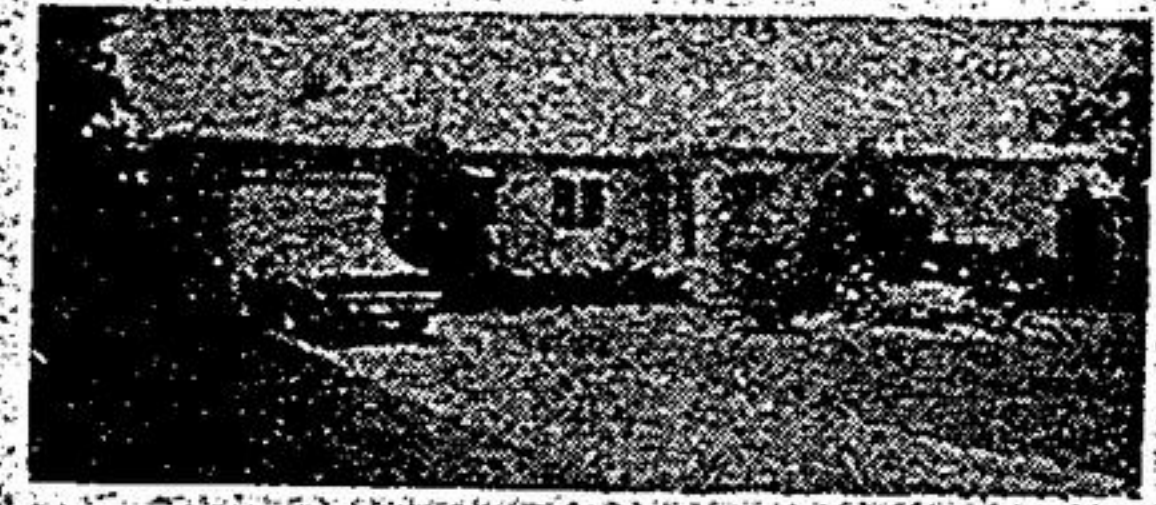
Unique opportunity to enjoy country living just 2 kms. from Stouffville. Charming 2 + bdrm. home features spacious LR with FP, sep. DR., country kit. with appliances +++ on pleasantly landscaped acre. Includes use of swimming pool and small barn. \$1600/mth + utilities. Norma Larkin, off. 640-3131, res. 640-3591.



KIM REESOR



GERRY MEHARG LTD.
Member Broker



RANCH STYLE BUNGALOW

- Maintenance free
- 3 bedroom
- Full basement - finished
- Landscaped yard - private
- \$172,900.
- Call Kim Reesor, off. 640-3131.



KIM REESOR



GERRY MEHARG LTD.
Member Broker



LOADED WITH CHARM

- Main fir. fam. rm., cathedral ceilings
- Finished basement
- Screened in sun room
- Large private yard
- Pleasure to show
- \$177,900.
- Call to see, Kim Reesor, off. 640-3131.



KIM REESOR



GERRY MEHARG LTD.
Member Broker



MORE FOR YOUR MONEY

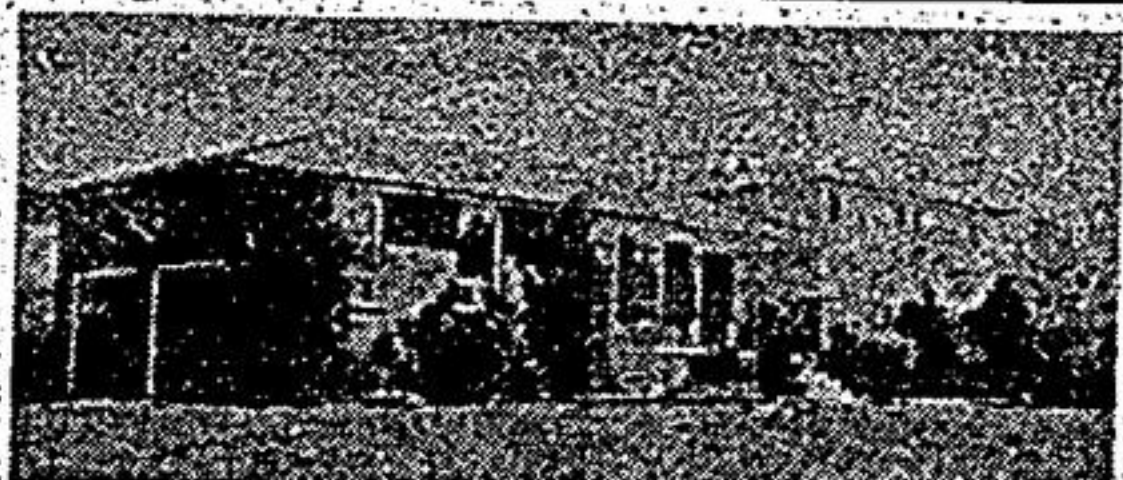
- Heat pump
- Central air, Central vac.
- Large country kit. with w/o
- 3 baths
- Fin. rec. rm./built-in uni/FP
- Court location, close to schools
- \$198,500.
- Call to see, Kim Reesor, off. 640-3131.



KIM REESOR



GERRY MEHARG LTD.
Member Broker



2200 SQ. FT.

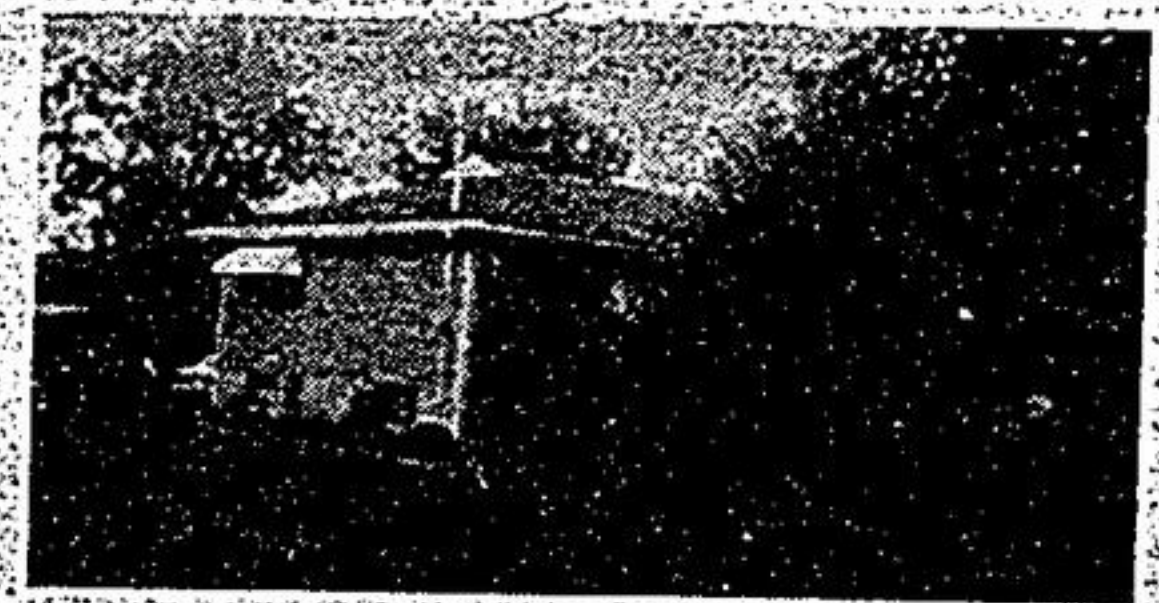
- Large 30' x 12' fam. rm. with FP & W/O
- 1/2 acre mature landscaping
- Balcony off dining room
- Reduced to \$222,000.
- Vendor has bought!
- 3 baths
- Kim Reesor, off. 640-3131.



CONNY HIPPMANN



GERRY MEHARG LTD.
Member Broker



CENTRAL STOUFFVILLE

Bright, cheery, spotless, + location. Don't delay, you will love this 3 bdrm. bungalow, oak flrs., 1 1/2 bath, rec. rm. & over sized garage. \$160,000. Conny Hippmann, off. 640-3131, res. 640-1149.



LOIS HATCH



GERRY MEHARG LTD.
Member Broker



PRESSURED BY APARTMENT RESTRICTIONS?
Why rent when you can own an immac. maint. free, furnished, 3 bdrm. bungalow. Year round potential, quiet dead end street. Listed at \$110,000. Includes deeded access to your own private beach & waterfront at Musselman's Lake. See it today with Lois Hatch, res. 640-8580, off. 640-3131.



MURIEL EDWARDS



DENISE PETTITT



GERRY MEHARG LTD.
Member Broker

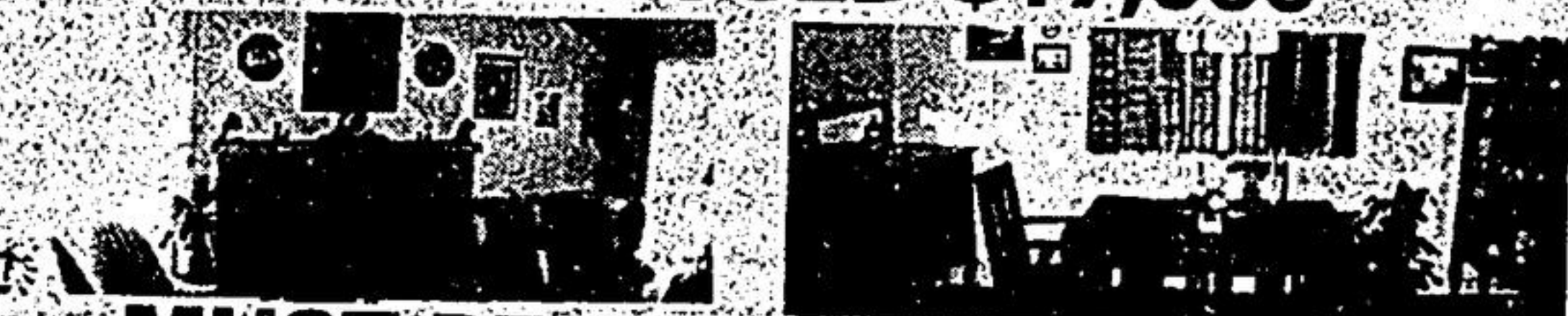


WHERE YOU LIVE IS IMPORTANT?

The best of Stouffville for \$199,000. Approximately 2,300 square ft. of living space in this four bedroom backsplit. Immaculate move in condition on an excellent street, close to all amenities. Call Muriel Edwards or Denise Pettitt at 640-3131. Open House - Sunday, July 19, 1987: 2:00 - 4:00 p.m. 320 North Street, Stouffville.



**CLAREMONT COUNTRY CHARM
NOW REDUCED \$17,000**



MUST BE SEEN — \$152,000



CALL JOHN MORRISON



GERRY MEHARG LTD.
Member Broker

OFFICE 640-3131
HOME 640-3988

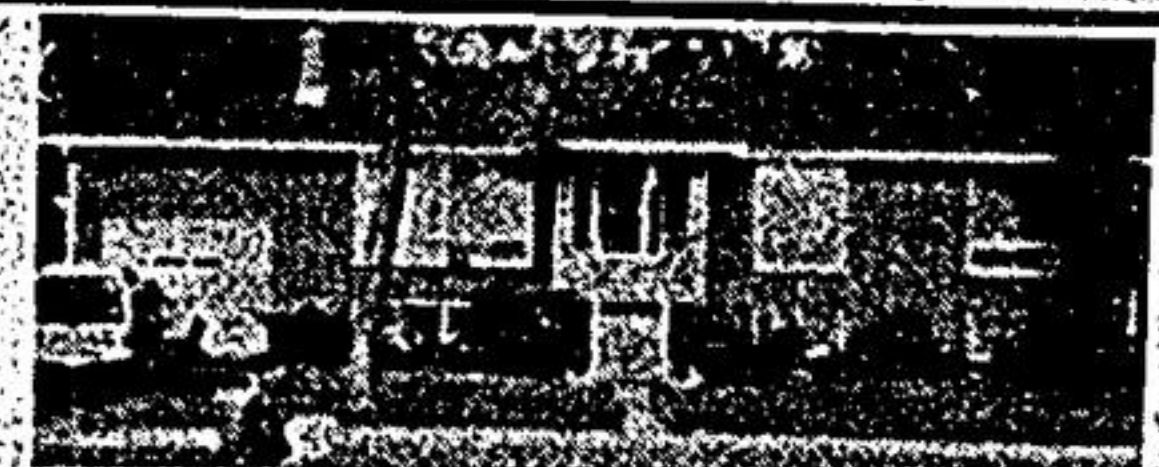
Enjoy the charming comfort of this 1 1/2 storey Century beauty complete with beams, fireplace, m/f laundry, solid oak kit. and sunken fam. rm. The approx. 1/2 acre scenic lot ensures privacy for the above ground pool and gorgeous deck with walk out from liv. rm. Hurry!! It won't last.



MARGARET GOEREE



MARQUIS REALTY LTD.



UXBRIDGE (Downtown)

Tree Lined Street, steps from all amenities 3 bedroom brick bungalow, attached garage, lower level! Huge master bedroom and finished family room with floor to ceiling fireplace. Built in closets and many more extras. Listed for \$179,000.00! Call Margaret Goeree at 852-6011/640-1726. Century 21, Marquis Realty Ltd. 298-3113.



ELIZABETH TOUGH



ROYAL LEPAGE REAL ESTATE SERVICES LTD. REALTOR
2525 PHARMACY AVE.



OPEN HOUSE

SUN. 24

23 GLAMORGAN CRT.

WARDEN & CARLTON RD.

Live in luxury in this beautiful 4 bdrm. executive home in Unionville. Located on a quiet crt. 2 skylights fireplace spacious green house kit. central air & high eff. furnace. Close to all amenities and schools. Call Elizabeth Tough 497-2555 or 496-1770.