

RE/MAX®



Re/Max Imperial Realty Ltd. Rltr. 640-4960

Re/Max Markville Realty Ltd. Rltr. 471-6600

Re/Max Scugog Realty Ltd. Rltr. 640-6755

COUNTRY ESTATE

Xmas Tree Farm on 12 acres. Sunken living room, formal dining room, indoor swimming pool. This one is sold but I have 13 qualified buyers looking for country properties on acreage. Looking to sell — call me for free evaluation. Call Jim Corrigan, Re/Max Scugog Realty Ltd., 640-6755/1-800-263-3288. Res. 852-7518.



JIM CORRIGAN



VENDOR MUST SELL!
4 bedroom brick Century home in Uxbridge area. Vendor wants to see all offers. Some vendor financing possible. Call me for additional information. Call Jim Corrigan, Re/Max Scugog Realty Ltd., 640-6755/1-800-263-3288. Res. 852-7518.



Jim Corrigan



REDUCED TO SELL!
Gormley 4 1/2 bedroom, 1 1/2 storey on pretty well treed 1/2 acre lot. 22 minutes to Hwy. 404. Potential in-law apt. set up. Now \$219,900. Derek Thornton, Res. 640-3690. Re/Max Imperial Realty Ltd. 640-4960.



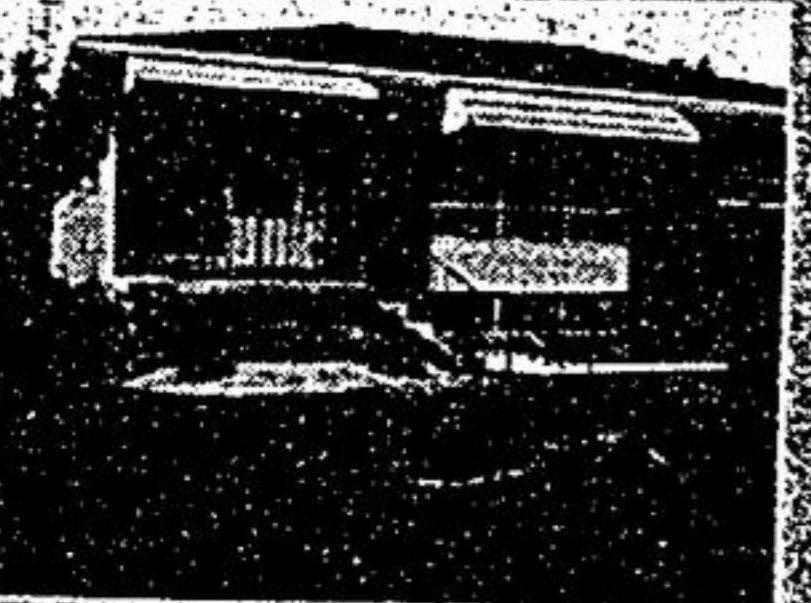
DEREK THORNTON



ENJOY WATERFRONT!
\$129,900
Stouffville North — 3 bedroom, dollhouse, fireplace, boathouse with sauna, even has garage, & only 10 miles N. of Markham. A rare listing. Jim Payne, 640-4960, Res. 640-1768. Re/Max Imperial Realty Ltd. 640-4960.



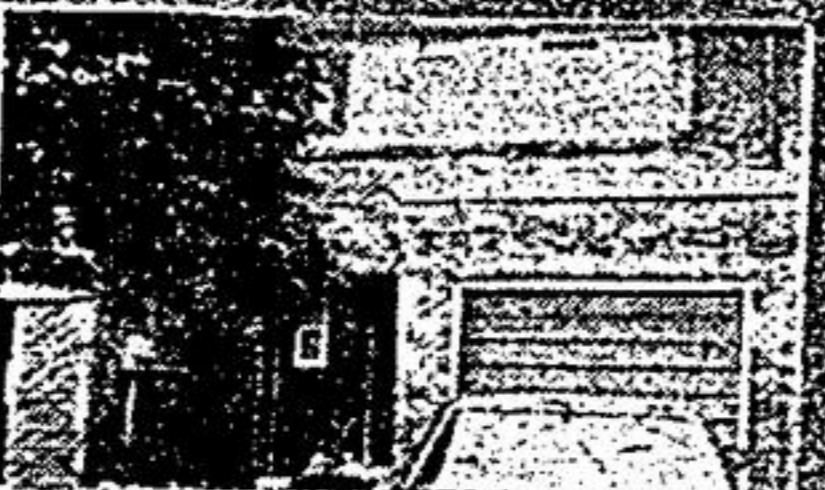
JIM PAYNE



BARGAIN BUNGALOW!
Stouffville — 3 1/2 bedroom. Brick, huge kitchen, hardwood & broadloom thru-out, rec. room with woodstove, perfect layout for income apt. Walk to all amenities. Priced to sell at \$179,900. Jim Payne, Re/Max Imperial Realty Ltd. 640-4960.



JIM PAYNE



JUST LISTED: PRETTY 4 BDRM. TOWNHOUSE

18 Knightsbridge Way. Low maintenance, fees, neutral decor, upgraded carpet, bright & spotless backs, onto the park finished basement. Just move in & relax. Joyce Crix/Robin Tinney, bus. 471-6600, res. 477-6174. Re/Max Markville Realty Ltd. Rltr.



JOYCE CRIX ROBIN TINNEY



SUPERIOR LOCATION!
1.18 acres, 5 min. from 404. Century farm house completely upgraded, exterior to be completed at additional cost \$289,900. Melodie Shurgour, 471-6600. Re/Max Markville Realty Ltd. Rltr.



MELODIE SHURGOUR



OFTEN SOUGHT, SELDOM FOUND!
\$379,900

Monarch's Robert Herrington Model (close to prestigious Wrenwood) 3600 sq. ft. of distinctive design. All the extras: central air, ceramics, bath rooms, multiple fireplaces, sunken living room and more are here. Susan Hall, 471-6600. Re/Max Markville Realty Ltd. Rltr.



SUSAN HALL

(Toronto Direct) 640-4151
(Mt. Albert) 473-3600

Farquharson REALTY LIMITED realtor

114 Main Street West, Stouffville, Ontario L0H 1L0
"SERVING OUR COMMUNITY SINCE 1956"



BEST BUY IN TOWN
Brick bungalow on lovely treed lot. Features eat-in kit., 1 1/2 baths, main fl. laundry, rec. rm. & many upgrades. List \$167,000. Sharron Brazier, 640-4151.



HOUSE & 10 ACRES \$165,000
Quaint bungalow, cathedral ceilings, N/E of Ballantrae. Stream, woods. Hurry for this one! John Walley, 640-4151.



LARGE LANDSCAPED LOT
Stouffville. Quiet court. 4 level, 3 bdrm. sidesplit. Family rm. with bar & stove. 2 baths, updated oak kit., att. garage. Fenced yard. Only \$194,900. John Walley, 640-4151.



BOAT, SWIM, FISH AT BACK DOOR
Port Perry area. Landscaped 3/4 acre lot. Water frontage, fully finished backsplit. Family rm. with FP, att. dbl. garage. Heated 22x32 out bldg. with 100 amp service, plus 34x32 storage shed. Within commuting distance to Stouffville, Markham/Uxbridge. Bud O'Connor 640-4151.

Century 21 ARMOUR REAL ESTATE INC.

ANNOUNCEMENT



BO JENSEN



DIANNE WOODCOCK

Sue Meadows, Manager, CENTURY 21 ARMOUR REAL ESTATE INC., Markham, is very pleased to announce that the successful real estate team of Bo Jensen and Dianne Woodcock have joined CENTURY 21 ARMOUR, Markham office. Bo has an extensive background in banking and Dianne has many years of legal experience. In addition, several very productive years in the Markham/Unionville area covering all types of residential real estate, complete the professional picture of this dynamic real estate team. Bo and Dianne look forward to serving you in the future and would be pleased to discuss any of your real estate questions or give you a no obligation estimate on your present home, so why not drop in or give them a call at 294-2533.

ROYAL LEPAGE

225 YONGEST. S., AURORA



TREED SETTING - 10 ACRES
\$289,000. Queensville/Mt. Albert area. Cathedral ceilings, skylights, sunken living room, walkout from master bdrm., 4 pc. ensuite, 3 car garage. Wendy Archer 889-0544.



ENJOY COUNTRY LIVING.
\$219,900. Super family home on 1.39 acres, Hwy. 48 north of Mt. Albert. 3 bedroom sidesplit, family room has fireplace and walkout, country kitchen. Wendy Archer 889-0544.