

**Country
estate**

UCW tour

Coldstream Meadows, Mr. and Mrs. Barry Rowan's Georgian-style country residence on Durham Region Rd. 23 north of Leaskdale Sideroad, is one of seven area homes on tomorrow's tour (12 noon-5 p.m.) sponsored by Uxbridge's Trinity UCW. Tickets costing \$10 each are still available by contacting 852-3265.

—Chris Shanahan

**Speed
zone
changes
okayed**

By DENISE McDONALD
Town Council has approved an Ontario Provincial Police request to consolidate speed zones along Hwy. 47 in Whitchurch-Stouffville.

According to a letter submitted to Council May 26 from Area Traffic Analyst H.J. Doyle, the OPP has voiced concern about numerous speed change zones over a short section of highway. The force complained it's difficult to enforce any speed limit.

"We recommend the 80 km/h speed zone on Hwy. 47 between Hwy. 48 and Stouffville be revoked and the existing 60 km/h zone abutting it be extended throughout," Mr. Doyle said.

"Maybe we'll save a few fender-benders," noted Mayor Fran Sainsbury.



**THIS WEEKS
SPECIALS**

Cinnamon Danish
Pkg. 6
reg. 2.40 Special 1.99

Chocolate Malted
Cakes
reg. 7.00 Special 5.95

June 3-6

MONDAY & TUESDAY SPECIAL

White & Whole Wheat Bread .99 per loaf

Hewitt's HOME BAKING
MARKHAM MALL • HWY. 7 EAST
OF WOOTTEN WAY • 294-7275

SUNLAND LANDSCAPE

**THOUSANDS OF TREES
TO CHOOSE FROM!**

LARGE SELECTION OF TREES, SHRUBS, EVERGREENS, ROSES, BOX PLANTS, PERENNIALS, UPRIGHT & SPREADING JUNIPERS, & YEW. LARGE TREES OUR SPECIALTY.

**COLORADO SPRUCE
from \$10.00 & Up**

Thousands of Colorado's
to choose from.

Bloomington Rd.
1 mile east of 404 south side



FOR 2 WEEKS ONLY
**ALL NEW 1987
WOOD'S FREEZERS
AT OUR
COST**

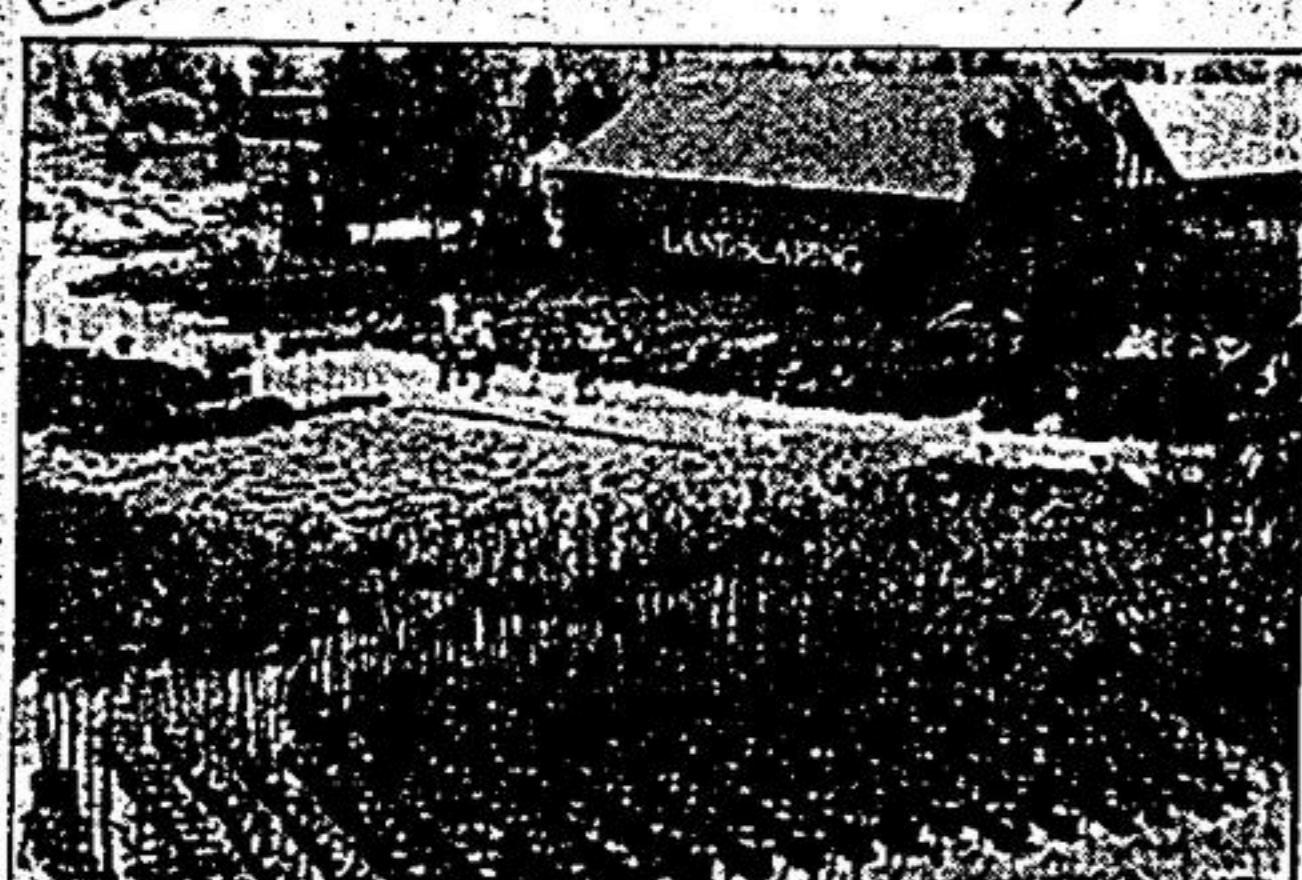
Mac MILLAN
ONCHARD
Hwy. 2 Between Ajax and Whitby
OPENS THURS. JUNE 4
MON-FRI 9 a.m. - 8 p.m. SAT-SUN 9 a.m. - 6 p.m.

COME IN AND
Discover
THE NEW

JOHN BROUWER

Garden Centre & Landscaping

"Where Quality Comes First."

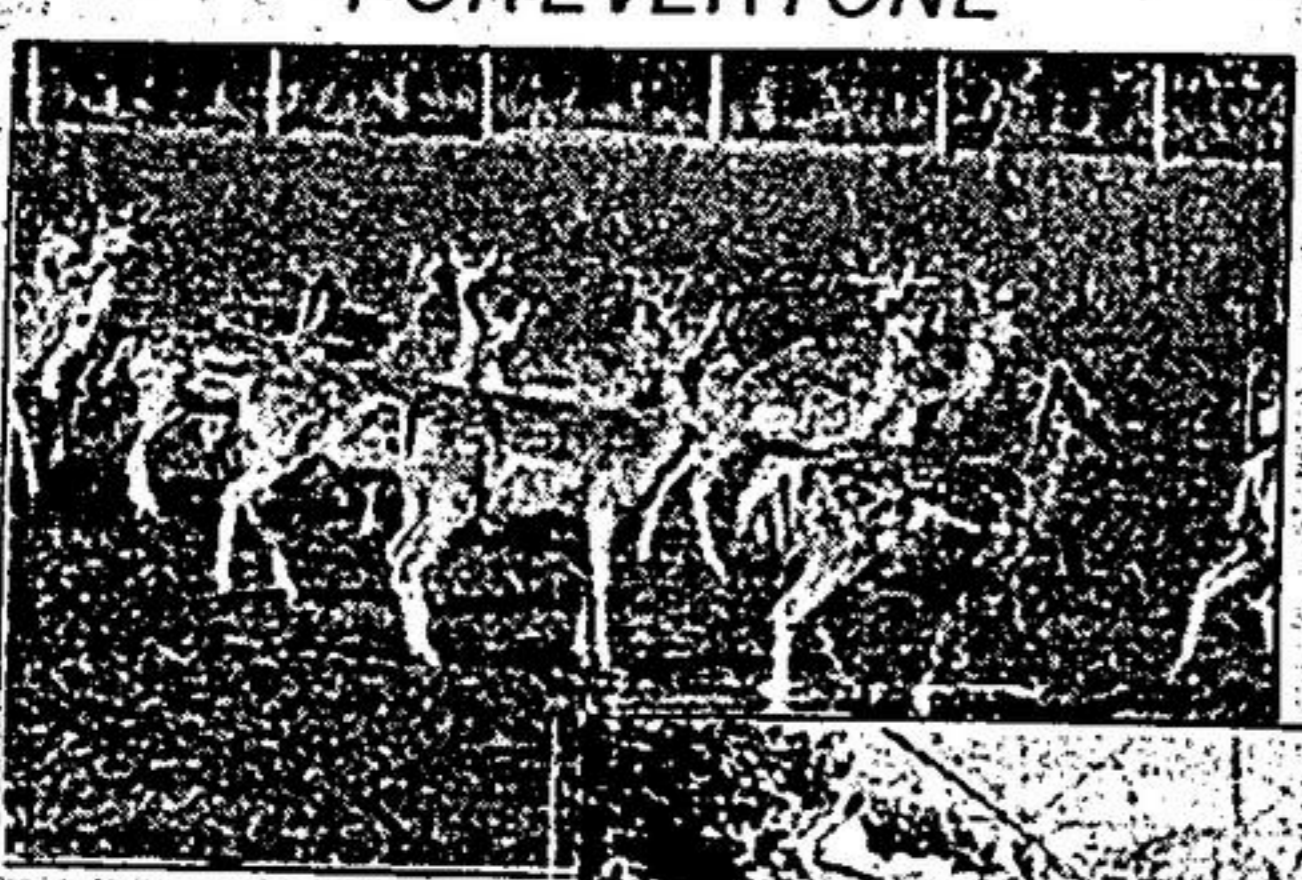
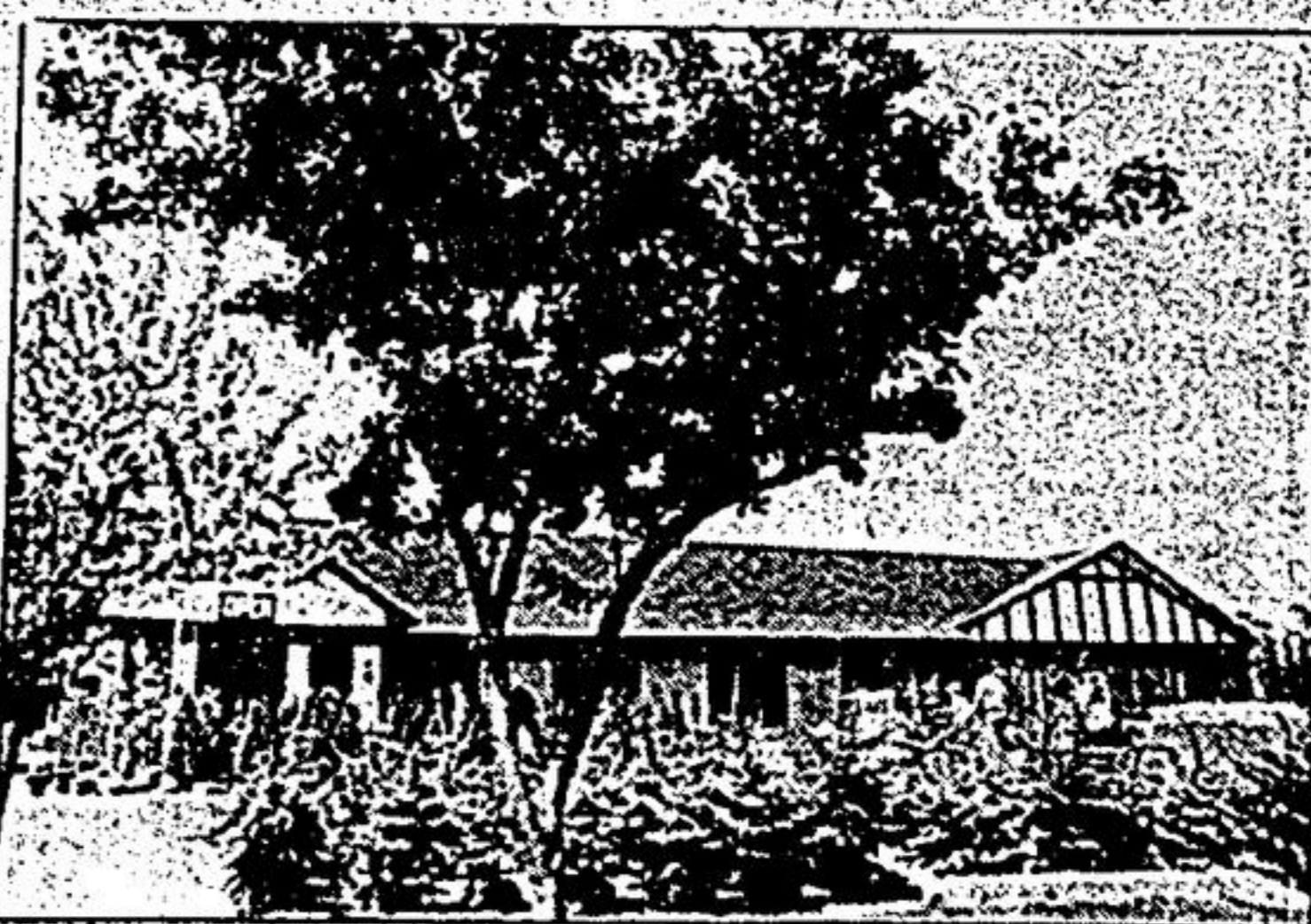


WE HAVE SOMETHING
FOR EVERYONE



Our Greenhouse has
over 7,000 sq. ft. of
displayed annuals,
perennials, herbs,
hanging baskets and
much, much more.

**PETUNIAS
80¢** per pack



See our collection
of live Ducks, Swans,
Goslings and Deer.
Bring the whole
family.

ROSES



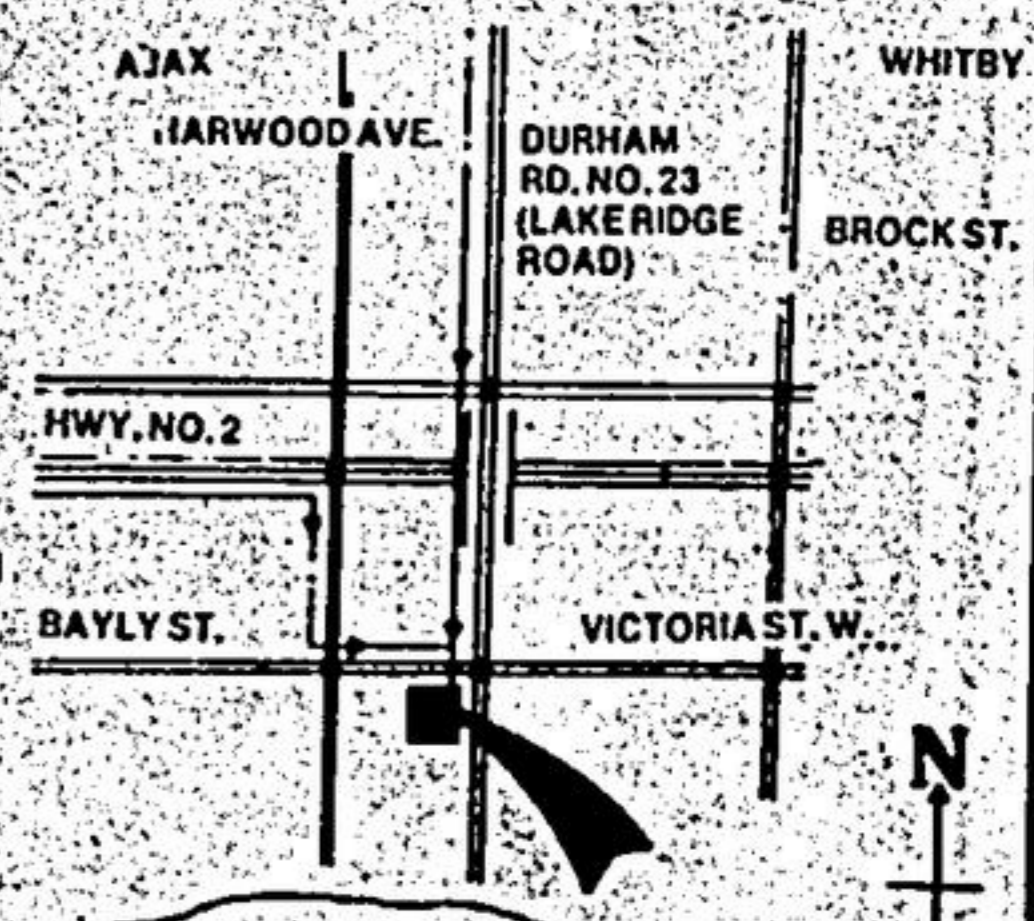
CLIMBER, HYBRID TEA
FLORIBUNDA, YOUR CHOICE
BUY 1 AND GET 1 AT

**1/2
PRICE**

WEED
and
FEED **10% OFF**
VEGETABLE
GROWER
NOW
\$10.49 15 kg.
Reg. \$12.49

**MOUNT BATTEN
JUNIPERS \$17.99**

Reg. \$41.99



Ensure that touch
of elegance year
round with the
help of our expert
landscape staff.

HOURS
MON.-FRI. 8-8
SATURDAY 8-6
SUN. 10-5



686-1545