

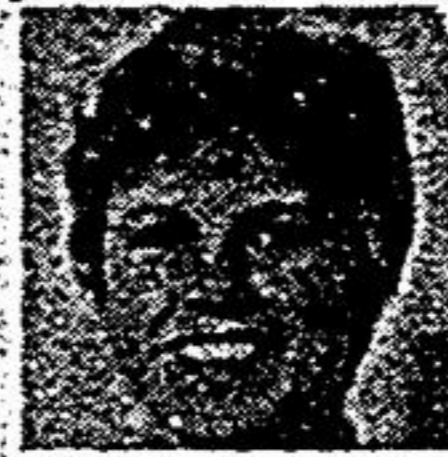


KIM HNILICA-LOVE

LAND BARON Realty Inc.
Real Estate Broker



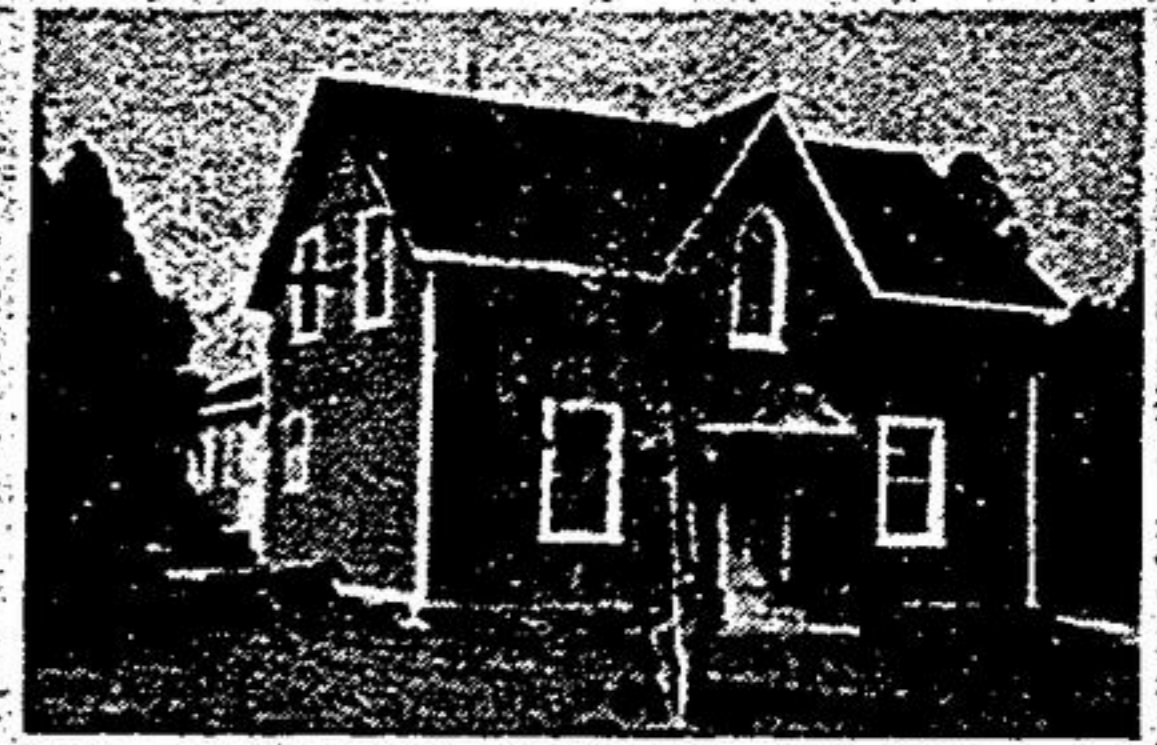
ABSOLUTELY MARKHAM'S BEST VALUE!
\$228,450 - 4 bedroom grand valley home. McCowan & Denison. Ceramic floors, kitchen and baths. Step up oval tub & separate shower ensuite. Luminous ceilings and much more. Kim Hnilica-Love, Land Baron Realty Inc. 297-7444, res. 471-5828.



MARGARET GOEREE



MARQUIS REALTY LTD.



Hwy. 47 3 min. S. of Uxbridge
Builder owned and restored!
Victorian home on 10 acres workshop
loading shed. 5 acres is fenced paddock.
Best riding country around, come and see.
Listed for \$259,900.

ALSO AVAILABLE NEXT DOOR
27 acres of land, 1/2 bush, pond to be
finished by owner, just E of #23 on
Durham 13. Building permit available,
listed for \$99,000.

10+ ACRES NORTH
3 bedroom bungalow, finished basement
with 2 walkouts, 4 ponds, steel barn 24x24
drive shed, listed for \$199,900.

For more information on any of the above properties call Margaret Goeree
Century 21 Marquis Realty Ltd. 298-3113 or Res. 640-1726



GERRY MEHARG LTD.
Member Broker



DOWN A VILLAGE LANE...

In Claremont is this pretty 2 bdrm. Century home on a dble. lot. Beamed liv. rm. w/FP, country kit., fam. rm. and main flr. Indry. Beautiful private backyard. \$179,000. Call Norma Larkin, off. 640-3131, res. 640-3591.



JUST RIGHT FOR RETIRED COUPLE...

This 3 bdrm. brick bung. almost takes care of itself. Convenient main flr. layout, lge. rec. rm. for entertaining on an established street in the centre of Stouffville. \$185,000. Call Norma Larkin, off. 640-3131, res. 640-3591.



JUST REDUCED

Large lake front lot, north of Stouffville, 4 bdrm. cottage, private dock, southern exposure. \$129,900. Diane Davis, off. 640-3131, res. 640-3587.

PEPPERLAW DAIRY FARM

Excellent bldgs., including a lge. Victorian brick house, lge. barn; 2 steel grain bins, implement shed, 140 acres of prime land, hdwd: bush, 3 road frontages, good view. Asking only \$325,000. Call Earl Dowswell, 705-426-7024.

CANNINGTON NORTH

82 acres, approx. 60 acres in crop, balance mainly wooded, good bldg. location. Asking only \$67,500. Call Earl Dowswell 705-426-7024.

WOODVILLE DAIRY FARM

2 brick houses, lge. barns, silo, outbldgs. & loaded with many extra features, 390 acres, good soil, one of the best farms in the area, for further information call Earl Dowswell, 705-426-7024.

ENJOY LAKE LIVING

Inspect this Pt. Bolster custom built brick bung. w/2 bdrms., a sep. income granny apart., also a workshop, close view of lake and public swimming area. Asking \$159,900. Call Earl Dowswell 705-426-7024.

QUALITY GALORE

Exceptional 3 bdrm. bung. on 100 x 180 ft. fenced lot, first grade hardwood flr. plaster construction, rare find on today's market. \$235,000. To inspect call Frank or Conny Hippmann, off. 640-3131, res. 640-1149.

12 MIN. TO MARKHAM

Searching for privacy, almost 1/2 acre, 4 bdrms., 2 1/2 baths, fam. rm., W/O rec. rm., backing onto open fields. \$239,000. Frank or Conny Hippmann, off. 640-3131, res. 640-1149.



MARGO GREENAWAY



IF YOU WANT QUALITY

Consider this custom 3 bdrm. home w/ upper level fam. rm., W/O to deck overlooking a Mt. Albert sunset. Quality reigns throughout w/oak st. rails, kit & vanity cupbrds., upgraded brdlm., illuminated ceil, FP in liv. rm., wood stove in bsmt., cent. vac. and more. Look here first.



COMMERCIAL ZONING - CLAREMONT
Just \$165,000. will allow you to set up your small business & live at home. 3 bdrm. lge. kt., din. rm., liv. rm. & den. Garage w/ workshop & loft.



MANILLA BEAUTY - \$150,000.

4 bdrm. brick on 1/2 acre - well landscaped & cared for. Ex. lge. mster bdrm. w/ ensuite. Main flr. Indry & fam. rm. Antique brick FP. W/O from kit. to deck & patio, a #10.

\$149,000 SOUTH OF HOLT

Delightful 2 bdrm. board & batten on 1/2 acre. Majestic view - dble. garage. Rec. rm. w/wood stove + 3rd bdrm.

BUILDING LOTS

1. Mt. Albert \$55,000. 200' fr. x 127' deep.
 2. Kirkfield for the investor
 1. 76 acres near lift locks - 2300 fr.
 2. For your country retreat - 13 acres \$25,000.
- 14 acres \$26,000.

BUY NEW AND HAVE AUG. CLOSING GUARANTEED. 3 bdrm. bungl. on 1/4 acre W/O from dinette. Just 25 min. from Markham. \$142,900. Call Margo Greenaway, off. 640-3131/473-1979, res. 473-2546.

Call Margo Greenaway, off. 640-3131 or 473-1979, res. 473-2546.



OMEGA REALTY LTD.
446 DAVIS DR. NEWMARKET
898-1211
TORONTO LINE 773-9335

valerie schoenrock



john green



DRIVE A LITTLE FURTHER GET A WHOLE LOT MORE

Executive country living on 8 acres close to Hwy. 40. Fruit trees, paved lighted drive, custom 4 bdrm., large eat-in kitchen with W.O. to deck over triple garage, den, sitting room. Large foyer, fin. fam. rm. with fireplace, bar & W.O., games room, and much more. Only \$289,000. Call john green or valerie schoenrock 898-1211, 773-9335.



MT. ALBERT REDUCED COUNTRY RETREAT 1/2 ACRE

For \$199,900 nestled in the trees is this picturesque custom bungalow with a unique layout. Featuring a large fieldstone fireplace with planter, bright eat-in kitchen with built-in appliances, upgraded broadloom and tastefully decorated. Call john green or valerie schoenrock 898-1211, 773-9335.



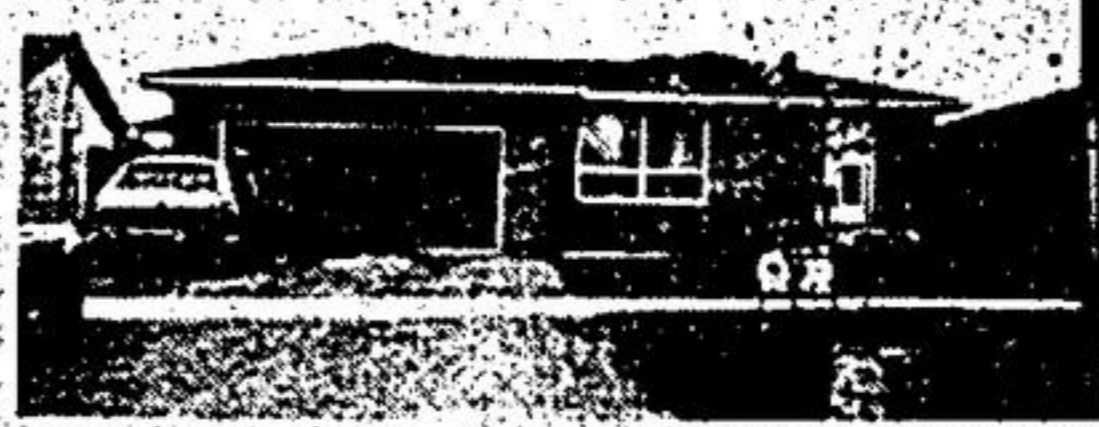
INDUSTRIAL SPACE AURORA

Over 5,000 sq. ft. at \$4.50 net per sq. ft., nice clean operation. Executive offices, mezzanine, 2 loading doors, scissor lift. Call valerie schoenrock 898-1211, 773-9335.



GO FISHING IN YOUR BACK YARD & ENJOY LUXURY LIVING

All this and more with a large 2 storey quality home with 2 fireplaces, eat-in kitchen, separate dining room, W.O. to deck, fin. fam. room, games room, bar, all on 1 1/2 acres and close to 404 for only \$259,900. Call john green or valerie schoenrock 898-1211, 773-9335.



MOUNT ALBERT \$169,900

Located in good area in town. This nearly new backsplit offers an eat-in kitchen, living/dining combo with walkout plus large finished family room with woodstove and walkout to private yard. Neutral decor and move-in condition. For more info, call john green or valerie schoenrock 898-1211, 773-9335.



MT. ALBERT

DON'T WAIT FOR THIS BEAUTY!

Enjoy the comfort & elegance of this nearly new home with upgraded carpets, neutral decor, oak kitchen, custom fin. fam. room with fireplace. For \$179,900 you get all this plus 2 door garage, beautiful landscaping with interlocking entrance & patio off dining room. Call john green or valerie schoenrock 898-1211, 773-9335.

NEW LISTING 27 ACRES WITH POND \$119,900

High on a hill with terrific view, plus a beautiful pond over an acre in size. Part clear, part treed. Call John Green or Valerie Schoenrock, 773-9335 or 898-1211.