

PRIVATE STOUFFVILLE

Detached, mint cond., 10 mo. old, 3 bedrooms, 2 1/2 baths, c/air, c/vac., fireplace, all upgrades. Large lot.

Phone 640-7691

PRIVATE RAYMERVILLE AREA

Three bedroom, greenhouse kitchen, upgraded carpeting, many extras. Close to school and park. Professionally decorated.

\$237,500
Call 294-1448
(after 5 p.m.)

AVAILABLE

1st and 2nd Mortgages. 48 hour commitment. Free Financial Consultation. Call Sid 497-4043.

the
Bridle Trail



UNIONVILLE BRIDLE TRAIL

Prestigious Main Street steps to shopping and pond. Quality Monarch built, 2700 square feet executive home, numerous upgrades. \$369,900.

for private sale inquire
474-0229

(Toronto Direct) 640-4151
(Mt. Albert) 473-3600



Farquharson REALTY LIMITED realtor

114 Main Street West, Stouffville, Ontario L0H 1L0
"SERVING OUR COMMUNITY SINCE 1956"

ROYAL LEPAGE

ROYAL LEPAGE REAL ESTATE SERVICES LTD. REALTOR



COUNTRY HOUSE - 100 ACRES
\$325,000. Charming board & batten, centr hall. N.E. of Mt. Albert. Pine floors & trim. Serviced bank barn with 8 box stalls. 30' x 90' metal shed. Joan MacDougall 889-0544.



10 ACRE HORSE FARM MT. ALBERT
\$339,000. Maintained to perfection. 4 bdrm., 3 baths, brick home. High on a hill. 10 stall serviced barn-prep room. 3 paddocks. Excellent fencing. Joan MacDougall 773-6340 res. 722-8027.



14 ACRES - HOUSE - 2 STALL BARN
\$215,000. N.E. of Uxbridge. Well maintained 3 bdrm., 2 bath home. Fam. rm. with fireplace, small cottage. Super pond, woods, 4 1/2+ acres, workable. Joan MacDougall 889-0544 res. 722-8027.

Century 21

South Breeze Realty Inc.

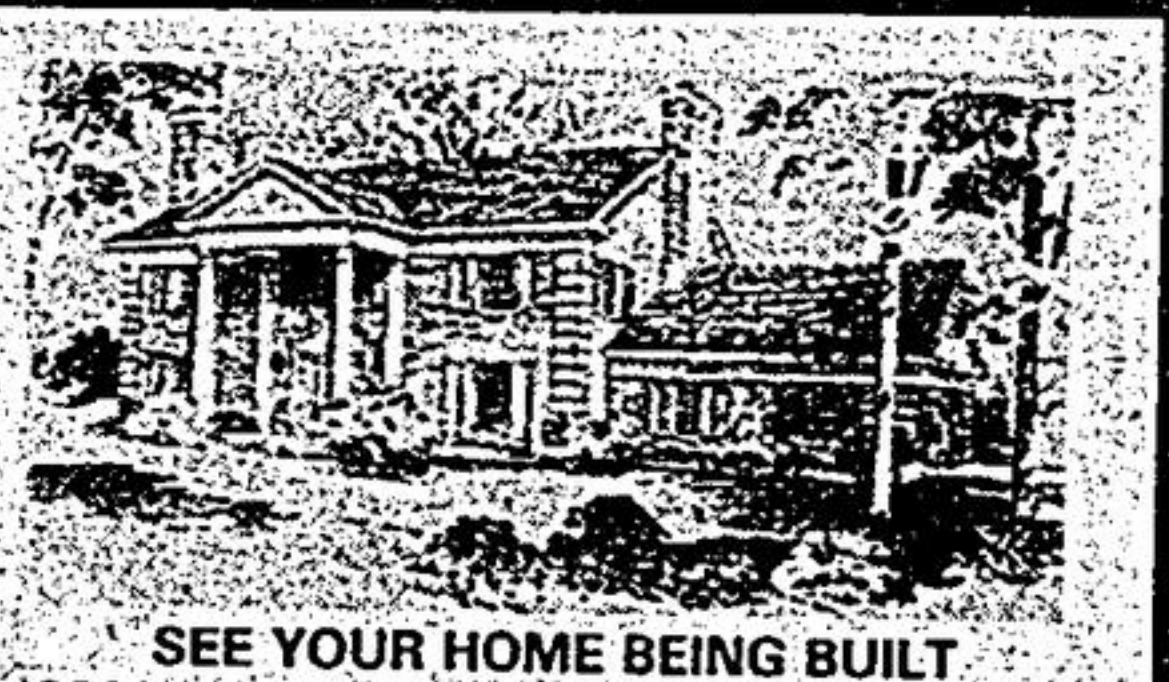
HIGHWAY #7 AND WOOTEN WAY
Green Park built detached brick two storey, 3 bedrooms with finished basement, central air and central vac. \$214,900. Thousands spent on upgrades. Can assist with financing.

HIGHWAY #7 AND WARDEN AVE.
Great Gulf built brick detached 2 storey executive home in Unionville \$459,900. Hardwood floor with marble floor in foyer and dining room. 3500 sq. ft. Lots of upgrades 70 ft. lot, immaculate.

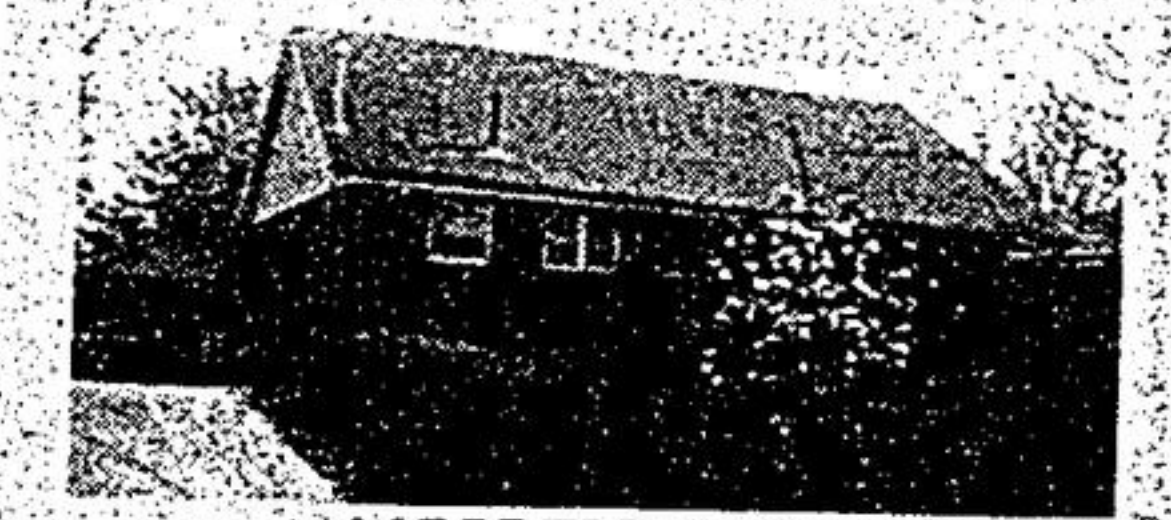
CALL BERNICE GREEN
477-5511 or 477-5125
or Pager 442-8128
CENTURY 21 SOUTHBREEZE REALTY INC.



HIGH ON A HILL
Stone & aluminum sidesplit, 5 bdrm., 2 bath, eat-in kit., dbl. garage, situated on 28.19 acres with commanding view of Uxbridge countryside. Asking \$239,000. Bev Sefton 640-4151 or 473-3600.



SEE YOUR HOME BEING BUILT
3200 sq. ft. Georgina style, 4 bdrm., 4 baths, main flr. study, laundry & family rm. with fireplace & w/o. Located in area of estate homes on 2.98 acres, six miles N/E of Stouffville. List \$349,000.



LARGE TREED LOT
Stouffville. Perfect starter/retirement home. 2 bdrm brick bungalow, features main flr. laundry/mud rm., eat-in kit., w/o to deck, 1 1/2 baths & 1 car garage. List \$167,000. Sharron Brazier 640-4151.



GENTLEMAN'S FARM - STOUFFVILLE
Picure post card setting, 9.3 acres, 3 bdrm. Board & Batten farmhouse with large main flr. family rm., good 10 stall horse barn, 4 car coach house garage. 1 mi. N of Bloomington S.R. Excellent value at \$359,000. Norma Urquhart 640-4151 or 294-5277.



COUNTRY ESTATE - 5 1/2 ACRES
20 min. N of Hwy. 7 at Kennedy Rd. & Vivian, easy access to 404. Gracious 4400 sq. ft. home with large principal rms., complete with flowing river, tennis court & small guest cottage. Asking \$539,000. Norma Urquhart 640-4151 or 294-5277.



REDUCED! BEST BUY IN TOWN
Huge 4 bdrm sidesplit, large main flr. family rm. w/o to gorgeous backyard & heated ing. pool Central air, vac. Priced to sell. \$219,000. Norma Urquhart 640-4151 or 294-5277.



LOCATION, LOCATION, LOCATION!
Says it all! 16 1/2 acres, 1 mi. N of Bloomington on Warden, easy access to 404. 3 bdrm. brick farmhouse, barn, small spring fed pond. Possible severance. \$449,000. Norma Urquhart 640-4151 or 294-5277.



VIVIAN FOREST CHARM + 5 ACRES
Superb location, 3 bdrm. home, w/o to deck, overlooking trees & privacy. \$242,500. Jeannine Sheridan 640-4151.



LUXURY & LOCATION
Spacious 4 bdrm. home with skylights, large principal rms., 3 baths; custom pine kit. w/o to balcony overlooking pond, mature birch on large 1/3 acre lot at Bethesda, near golf course. \$375,000. Jeannine Sheridan 640-4151 or 640-4101.



BOAT, SWIM, FISH AT BACK DOOR
Port Perry area. Landscaped 3/4 acre lot. Waterfrontage, fully finished backspl. Family rm. with FP, att. dbl. gar. Heated 22 x 32 out bldg., 100 amp. ser. plus 34 x 32 storage shed. Within commuting dist. of Stouffville, Markham, Uxbridge. Bud O'Connor 640-4151.

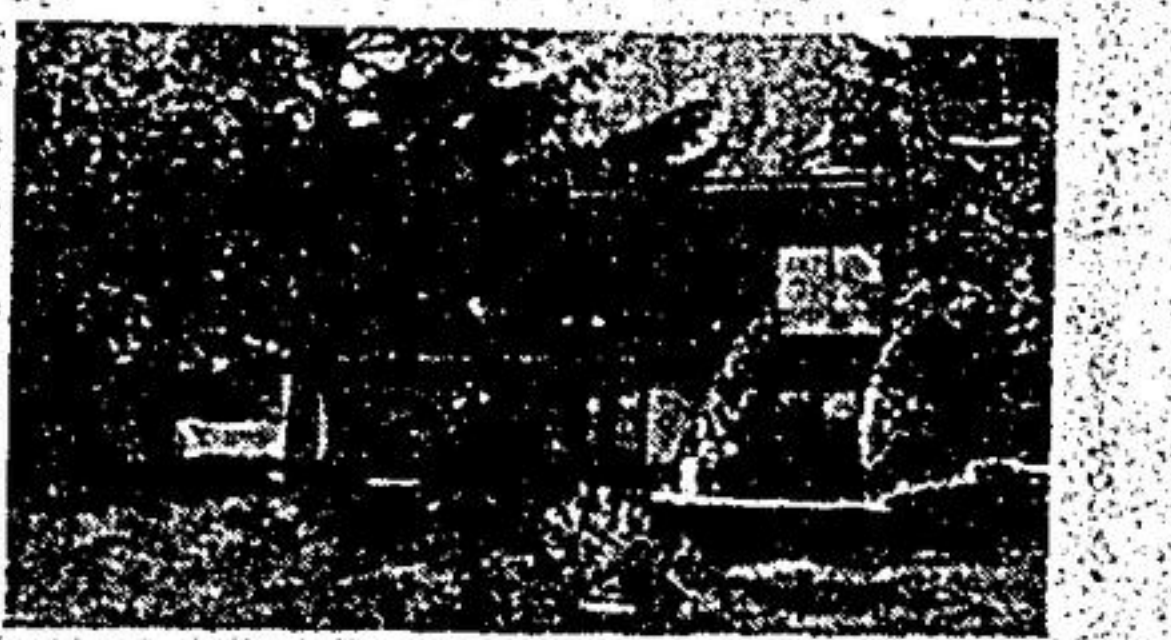
JUST LISTED - GLEN MAJORS
Open concept century charmer, antique brick FP in LR, w/o to patio & superb 66 x 165' lot, backing onto conservation. Bright eat-in kit., must be seen. Only \$179,000. Colleen Brown 640-4151

10 ACRES BETHESDA RD. & WARDEN
Partly treed, mostly cleared & level. Small stream, would suit pond. Build your dream home in this valuable area. \$269,000. Susan Jenkins or Sharen Lyon 640-4151

Town Living Realty Limited

104 Main Street West
Stouffville, Ontario

Stouffville 640-2225
Uxbridge 473-2440



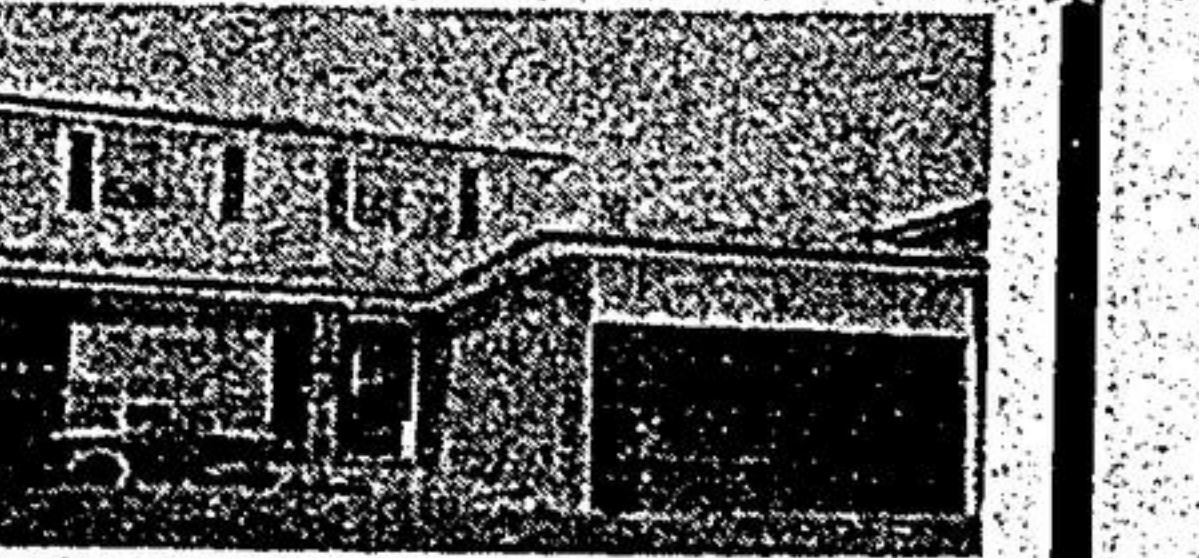
FIRST TIME OFFERED PINE SECLUSION
Large principal rooms, 3 walkouts to the deck. Stone/wood sided, 2 stone fireplaces. Ideally located to public school, easy city commuting via Hwy. 404, yet its 2 acres of country. A must to see. Call Marty Valteau 640-2225, Res. 640-5729.



MT. ALBERT ... REDUCED TO \$175,900
Large 2 storey, 4 bedroom home close to all amenities. Master ensuite, main floor family room with fireplace, double car garage. Move in condition. A must to see. Call Gayle McConnell 640-2225, 473-2440, 640-4712.



NEW LISTING EVERYTHING WITHIN WALKING DISTANCE
Maintenance free, brick, 2 bedrooms, hardwood floors, detached garage on Stouffville's Main Street. Perfect retirement home. Asking \$159,900. Call Marty Valteau for details 640-2225, 640-5729.



GOOD COMMUTING VIA 404
A must to see in NEWMARKET this immaculate 3 bedroom, 2 storey home. Main floor family room with fireplace and walk-out, main floor laundry, 3 baths. Immediate possession, only \$189,900. Call Gayle McConnell 640-2225, 473-2440, 640-4712.

VACANT FANTASTIC 46 ACRES
2 miles south of Goodwood, or, 3 miles east of Stouffville. Rolling with possible pond sites ad 4 acres hardwood bush. Asking \$239,000. Call Marty Valteau 640-2225, 640-5729.

THE TOWN AND COUNTRY SPECIALISTS

