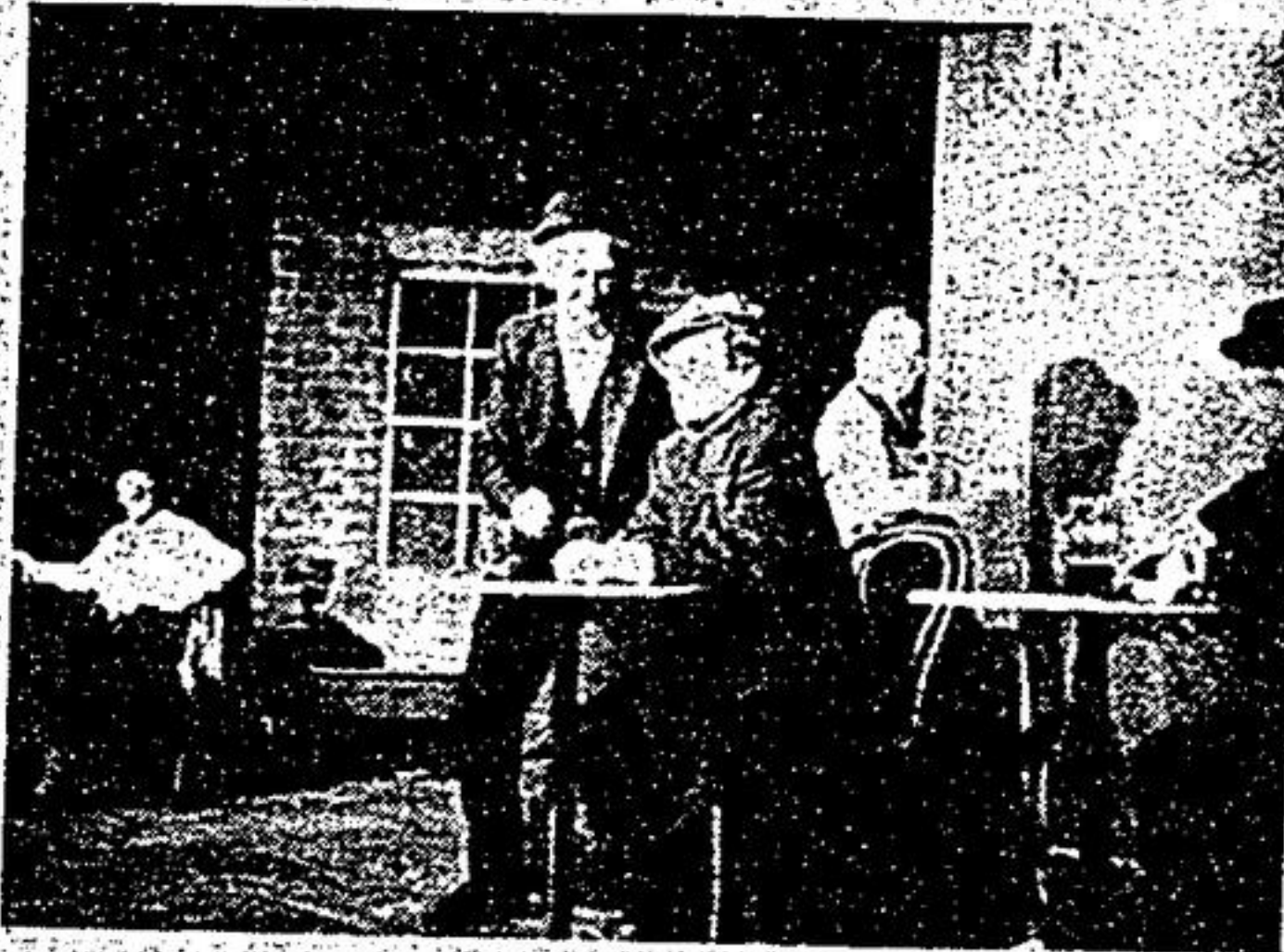


MARKHAM LITTLE THEATRE
THE ASSOCIATION OF COMMUNITY
THEATRES-CENTRAL ONTARIO

and
THEATRE ONTARIO
present

THEATRE ONTARIO

FESTIVAL 87



Monday, May 18
THE PLOUGH AND THE STARS
by Sean O'Casey
Toronto Irish Players



Tuesday, May 19
THE BEAR & THE PROPOSAL
by Anton Chekhov
Ontario Multicultural Theatre Association



Wednesday, May 20
THE ELEPHANT MAN
by Bernard Pomerance
Guelph Little Theatre



Thursday, May 21
JUNO AND THE PAYCOCK
by Sean O'Casey
Tara Players (Ottawa)



Friday, May 22
THE IMAGINARY INVALID
by Molière
Sault Theatre Workshop

Curtain at 8 p.m.
Join us in a celebration of community theatre in Ontario.
MARKHAM THEATRE FOR PERFORMING ARTS
Warden Avenue & Highway 7
Box Office: 479-0201

\$11. (plus 75¢ box office handling charge)
Visa, Mastercard, American Express

Green N' Growing

Elaine Gordon



Contain that color
for your garden

Here comes summer, so can we talk... about plants that "hang around"?

Containers filled with annuals are the answer for people who want kaboodles of color but have limited time to spend on flower beds.

They are an inexpensive cure-all for that bare-bones look. Container flowers will nourish the senses and shout Home Sweet Home to new homeowners until such time as the earth can be prepared to accommodate costly, permanent foundation plants.

Let frothy blooms fill the silence of windowboxes; marry tomatoes and annuals in a tub next to the back door; group large containers of flowers along a driveway, near swimming pools; use stairs as a step garden; or dress a brick wall or wood fence with hanging baskets on brackets.

Swing them high or low in sun or shade. Mass annuals in containers to relieve a sterile patio; dress up a swing set; invite visitors at an entrance; hang 'em in the air midway on a low tree limb; or create an intimate getaway on a balcony.

And to make sure they "don't go to pot" just mulch them to conserve some moisture, fertilize them every two weeks and water thirsty roots regularly.

Let imaginations go and con-

sider recycling a wagon, wheelbarrow or that cracked bird-bath. How about a wooden carpenter's tool box, painted to suit your fancy, as a portable carrier. Or a bicycle basket tied securely to a gate or railing. Why not a birdcage with potted plants "perched" inside. Or an old work boot with tiny annuals cohabiting with perennial Hens 'n' Chickens "peeping" (I couldn't resist it!) out of the top and toe.

Give some treadworn cart-tires a coat of white paint; lavishly plant annuals in the centre and cut holes here and there around the tiers to tuck billowing varieties. Or paint an old wooden stepladder and turn it into a potted plant stand; let the paint tray hold a hanging basket.

Containers allow flexibility for moving around and it can be a back saver if large ones are put on a skateboard or a piece of wood fitted with casters.

An empty pot inverted in the bottom of a large tub not only takes up space which saves on the amount of soil needed, but the load is lighter so moving around is easier. An inverted pot can also become a plant stand whose unattractiveness is hidden by arranging small containers of herbs and annuals around it.

SPRING SALE

TREES - SHRUBS - EVERGREENS

Colorado Spruce 2-3'	\$24.95
Austrian Pine 2-3'	\$24.95
White Pine 3-4'	\$29.95
White Spruce or Fir 2-3'	\$24.95
White Spruce 4'	\$39.95
Birch Clumps	\$49.95
Crimson King Maple 10'	\$55.00

We have a large selection of Colorado Spruce, Austrian Pine, Flowering Shrubs, Spreading Junipers & Upright Junipers.



N		HWY. #7	
HWY. 404	WOODBINE AVE.	X MODERN GARDEN SERVICE	WARDEN AVE.

MODERN GARDEN SERVICE

OPEN 7 DAYS A WEEK

9 AM - 7 P.M. 477-7787