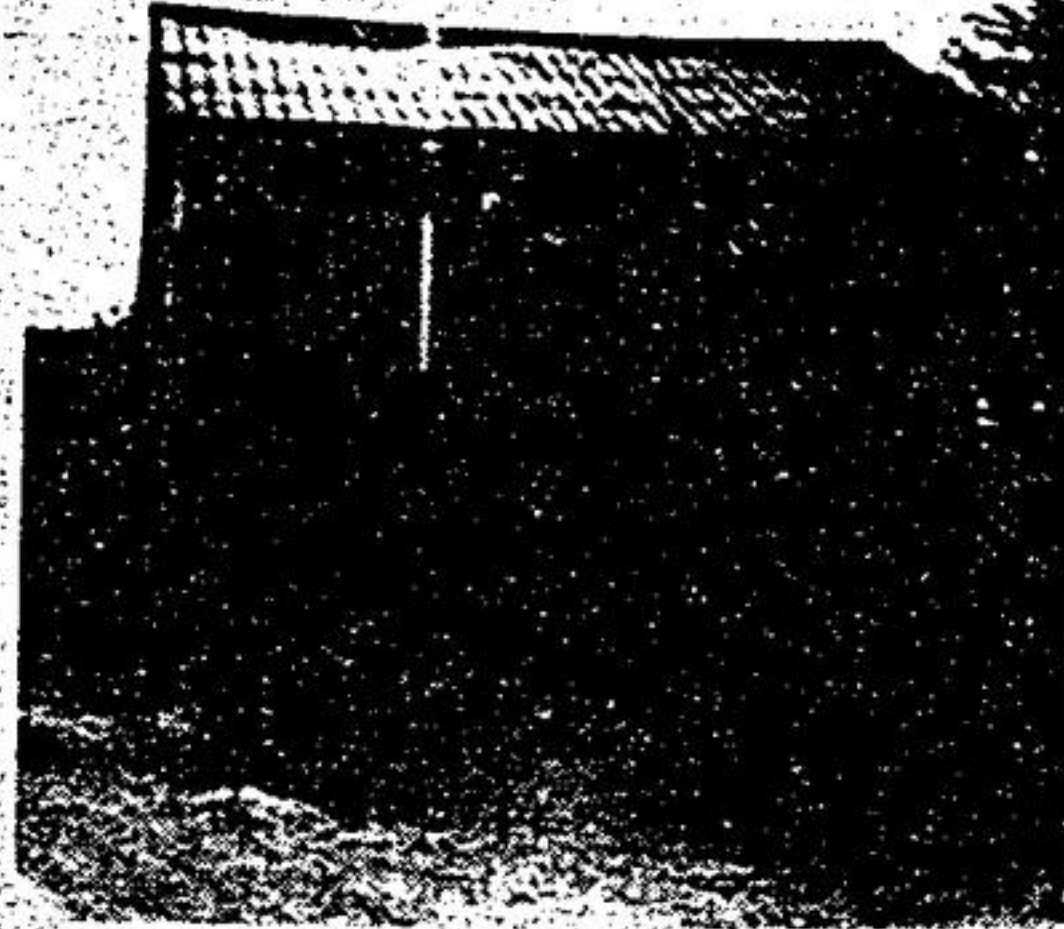


Century 21

GERRY MEHARG LTD.
Member Broker



MAIN STREET INVESTMENT!
Commercial property in the heart of downtown Stouffville. Very busy location! Call Ross Hetherington, off. 640-3131, res. 640-2441.



INVESTMENT POTENTIAL
Excellent commercial potential investment located at Ringwood. Small cozy renovated home. Call Ross Hetherington, off. 640-3131, res. 640-2441.



GREENPARK STARTER
Gingerbread trim on the outside, country decor inside, large MB w/ensuite, quiet court location. \$189,900. Call Kim or Ross, off. 640-3131.



AUTHENTIC VICTORIAN
Large rooms enhance this century home, original wood trim, hardwood flrs., stained glass windows 60' x 168' treed yard on older street in town. Call Ross Hetherington, off. 640-3131, res. 640-2441.



SUTTON BUNGALOW
Are prices too high and lots too small? For just \$135,900, you can own this 3 + 2 bdrm. home situated on 60' x 202' lot. Quiet dead end street. Call Don Geldart or Kim Reesor, off. 640-3131.



HOMES DON'T GROW BUT FAMILIES DO...
Greenpark, 4 bdrm., main flr. fam. rm., main flr. Indry. lge. country kit. June possession. Call Kim Reesor, off. 640-3131, res. 640-4138.

SARDINE SYNDROM?
SPREAD OUT on this beautiful 1.44 acre bldg. lot in Sandord. High & dry, 115' front., permits, poss. VTB, call for details. Brian Meharg, off. 640-3131/1-473-1979.

MOUNT ALBERT \$429,000
101 acres of beautiful rolling land, all arable. Two road frontages. Brick century home, excellent barns. Garry Knott, off. 640-3131, res. 281-3320.

SPLENDOR IN THE TREES
Cosy 3 bdrm. bungalow on 1.35 acres, Gormley area. Freshly decorated with new kit., fireplace, walkout to deck plus fin. rec. rm., extra lge. det. dble. garage, lot has lge. trees and circular drive. \$254,900. Wes Marshall, off. 640-3131, res. 223-0896.

N. W. STOUFFVILLE
Tranquil matured area of estate homes features lovely 3 bdrm. bungalow on 1/2 acre. Ideal finished open bsmt., fireplace for family get-togethers. Pleasure to show. \$240,000. Frank or Conny Hippmann, off. 640-3131, res. 640-1149.

FOR A COUPLE WITH IMAGINATION
This 2 bdrm. bungalow is situated on a beautiful major lot on a quiet street. Ideal for renovators. Asking \$76,900.00. Call Denise or Kelly, off. 640-3131, res. 640-6697.

ROOM TO ROAM AND ENJOY
Imagine no Hwy. driving to and from the cottage. This 4 bdrm. home in quiet area of 1/2 acre backing onto open fields is a beauty and spacious, with W/O, fam. rm. to covered patio and rockery. Aurora Rd. - 404 area. \$248,000. Call Frank or Conny Hippmann, off. 640-3131, res. 640-1149.

NEEDS ELBOW GREASE & TALENT.
This 2 bdrm. bungalow has most major renovations completed. Spend some time and turn this house into your home. Lge. lot for the kids and pets. Asking \$109,000. To view call Denise or Kelly, off. 640-3131.

ROOM TO ROAM - 2800 SQ. FT.
Country property located in Ballantrae. Brick & alum. sidesplit boasts 3 + bedrms., 3 baths, main flr. fam. rm. w/ fireplace, large manicured yard. \$249,000. Call Kim Reesor, off. 640-3131, res. 640-4138.

PRIVATE SALE

Close to Hwy. 404
2500 sq. ft. home

1 1/2 baths, fireplace in family room, 2/3 acre lot. Call 888-1150.

PRIVATE RAYMENVILLE AREA

Three bedroom, greenhouse kitchen, upgraded carpeting, many extras. Close to school and park. Professionally decorated.

\$237,500
Call 294-1448
(after 5 p.m.)

RE/MAX

Above the Crowd!

omega realty ltd. 898-1211
446 DAVIS DR., NEWMARKET 773-9335

valerie schoenrock



john green



INDUSTRIAL SPACE AURORA
Over 5,000 sq. ft. at \$4.50 net per sq. ft., nice clean operation. Executive offices, mezzanine, 2 loading doors, scissor lift. Call valerie schoenrock for details 898-1211, or 773-9335.



MOUNT ALBERT \$169,900
Located in a good area in town. This nearly new backsplit offers an eat-in kitchen, living/dining combo with walkout plus large finished family room with woodstove and walkout to private yard. Neutral decor and move-in condition. For more info call john green or valerie schoenrock 898-1211 or 773-9335.

2 ACRE BUILDING LOT \$89,900
Close to 404, High dry land. Call valerie schoenrock; 898-1211 or 773-9335.



HOW ABOUT A NEW HOME FOR JUNE?
Close to Newmarket, 2-car garage, this 3 bdrm. bungalow backs onto park lands with upgraded carpets, oak kitchen and 2 baths. Priced at only \$156,900 you get your money's worth and more. Call valerie schoenrock or john green 898-1211 or 773-9335.



DRIVE A LITTLE FURTHER GET A WHOLE LOT MORE
Executive country living on 8 acres. Fruit trees, paved, lighted drive, custom 4 bdrm., large eat-in kitchen with W.O. to deck over triple garage, den, sitting room. Large foyer, fin. fam. rm. with fireplace, bar & W.O., games room, and much more. Only \$289,000. Call john green or valerie schoenrock 898-1211, 773-9335.



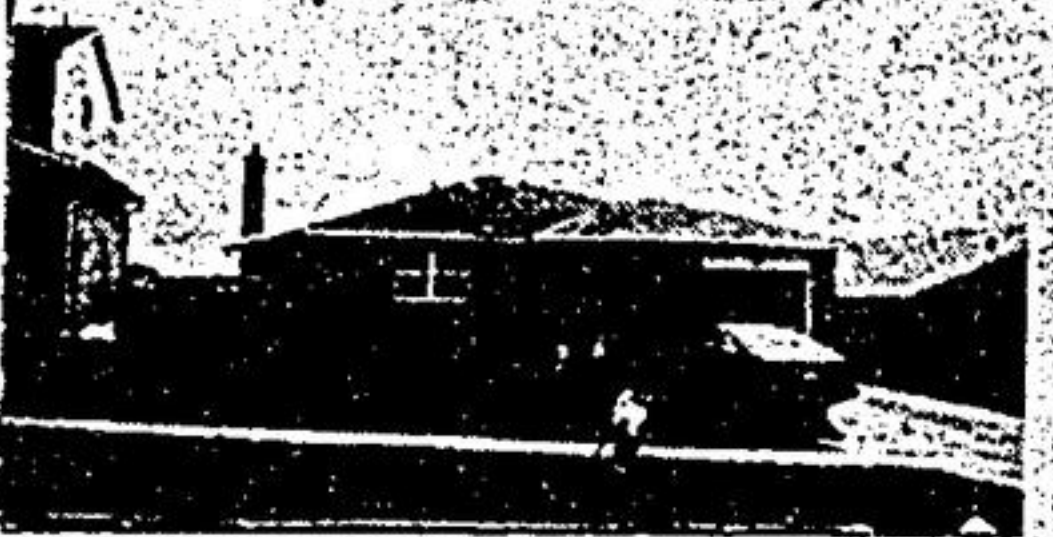
GO FISHING IN YOUR BACK YARD & ENJOY LUXURY LIVING.
All this and more with a large 2 storey quality home with 2 fireplaces, eat-in kitchen, separate dining room, W.O. to deck, fin. fam. room, games room, bar, all on 1 1/3 acres and close to 404 for only \$259,900. Call john green or valerie schoenrock 898-1211 or 773-9335.



DON'T WAIT FOR THIS BEAUTY!
Enjoy the comfort & elegance of this nearly new home with upgraded carpets, neutral decor, oak kitchen, custom fin. fam. room with fireplace. For \$179,900 you get all this plus 2 door garage, beautiful landscaping with interlocking entrance & patio off dining room. Call john green or valerie schoenrock 898-1211 or 773-9335.



COUNTRY RETREAT ON 1/2 ACRE
For \$209,900 nestled in the trees is this picturesque custom bungalow with a unique layout. Featuring a large fieldstone fireplace with planter, bright eat-in kitchen with built-in appliances, upgraded broadloom and tastefully decorated. Call john green or valerie schoenrock 898-1211 or 773-9335.



DETACHED BUNGALOW BACKING ONTO PARK
This cute little home is in A-1 condition, with a bright eat-in kitchen, large living room, tastefully finished family room with bar, fireplace and walkout to good sized lot, located in Newmarket close to schools. Call john green or valerie schoenrock 898-1211 or 773-9335.



Lois Markle

ACURIAL
MICHIGAN REAL ESTATE INC. REALTOR



BRIARWOOD RD. \$264,900

One of Unionville's most desired street. Large 4 bedroom home with main floor laundry room, walk out from family room to deck, walk out basement, outstanding view of Toronto Skyline. To view this home call: Lois A. Markle Res. 477-6045, Bus. 477-5556.