

Economist/Tribune showcase



OPEN HOUSE - SAT. MARCH 28th - 1 P.M. - 4 P.M.
WHITEVALE (CHURCHWIN ST.)

Century charmer on huge 1/2 acre lot with southern exposure and slope, thoroughly renovated interior which boasts large eat-in kitchen, main floor laundry room, separate dining room and large bright living room. Winding staircase upstairs to 3 quaint bedrooms. \$198,900. Peter Gillespie 640-3336, 649-3336.



CATHI LEE

1-2 ACRE ESTATE LOTS TRAIL OF THE WOODS

Prestigious new estate lot development located at Kennedy Road and the Aurora Side-road. These beautifully wooded lots range from one to two acres in size and wind gracefully around secluded roads with cul-de-sacs and parkland galore.

Architectural control of all plans will ensure your enjoyment and investment in your dream home and will definitely be an equity builder. Just three miles to the 404 highway and you can be in Toronto in a matter of minutes. The rest of the time enjoy the quiet serenity of true estate living that abounds in the evergreen area of York Regional Forests. Lots are priced starting at \$109,000. Call Cathi Lee 471-7001 or Howard C. Lee 887-5177 or 477-2223.



REAL ESTATE LTD

4460 No. 7
Highway
Unionville, Ont.
477-2223



ELIZABETH TOUGH SHEILA WORTH

ROYAL LePAGE

ROYAL LePAGE REAL ESTATE SERVICES LTD. REALTOR
2525 PHARMACY AVE.

STUNNING BRIDLE TRAIL HOME

Brougham model, sharp decor, professionally landscaped, greenhouse kitchen, 4 bdrms., mn. flr. fam. rm., wet bar, frpl., mn. flr. laundry rm. It's tough to beat the worthwhile service of Elizabeth Tough & Sheila Worth.

\$389,900

Elizabeth Tough & Sheila Worth
497-2555



RON BOONE



OLDE MARKHAM

Charming older home on quiet street with lots of trees. Enormous potential for the industrious. 3 bedrooms, large farmhouse kitchen, huge ravine lot - 83' x 132'. Steps to Main Street shopping. \$209,900. Call Ron Boone 294-2990.

HOMELIFE/GUARDIAN REAL ESTATE LIMITED



YOKO BOUWMEISTER



OPEN HOUSE SUNDAY 1-3 P.M. 73 ASHLEN UNIONVILLE

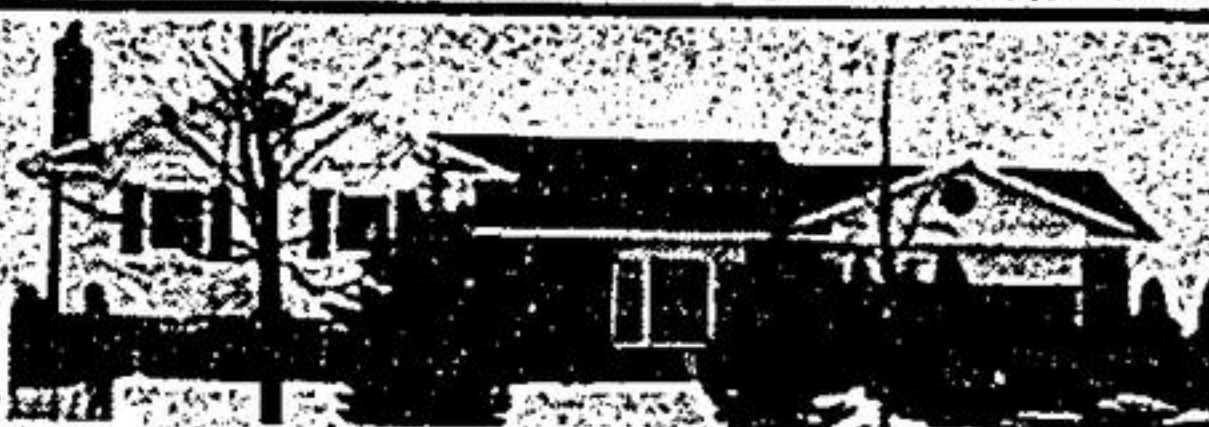
3 bedroom townhouse. Very private corner unit. Living rm. w/o, eat-in kitchen, exclusive area. Yoke Bouwmeister, 640-2082.



ADELE GALLO



474-1212 640-1200



OPEN HOUSE

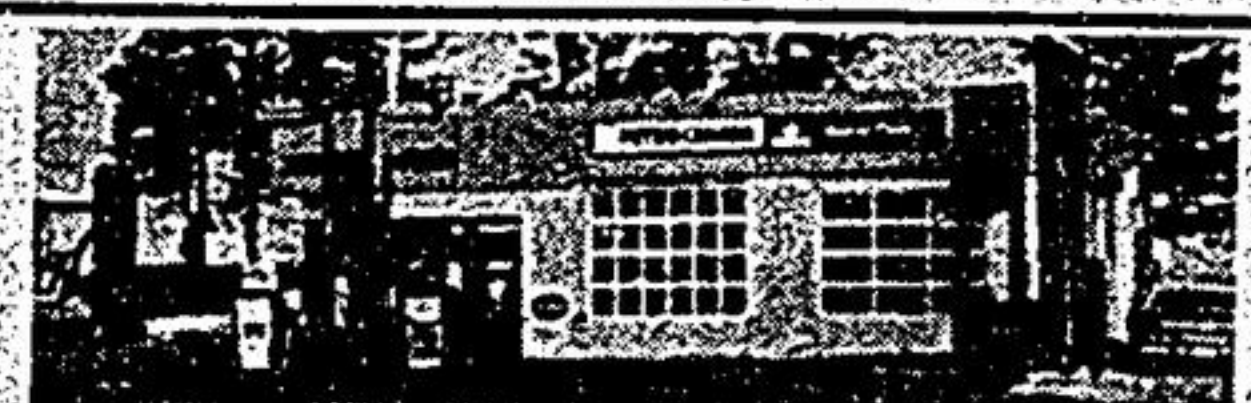
SUNDAY, MARCH 29, 1987, 1-4 P.M.
DIR: 97 SHANNON ROAD, MOUNT ALBERT
INDULGE YOURSELF: Longing for the quiet outdoors? Then look at this 4 bedroom home situated on a 1/2 acre court. Two solarium additions capture the noon day sun and when weary - an evening in the whirlpool spa can send those winter blues away! Approx. 2400 sq. ft. of luxury. Call today. Adele Gallo at 474-1212.



SHIRLEY HURLBUT



474-1212 640-1200



COMMERCIAL PROPERTY - WITH BUNGALOW VILLAGE OF GOODWOOD

Garage/Gas Station, Highway 47 location, some equipment included, accommodates 3 gas pumps, has paint booth, storage room, parts room, 3 bays, good size repair area and many extras. Includes 3 bedroom bungalow with rec. room, fireplace, wet bar. Large lot with highway frontage. Call for viewing Shirley Hurlbut, 640-1200, 649-2266 or residence 852-5242.



TONI SULLIVAN

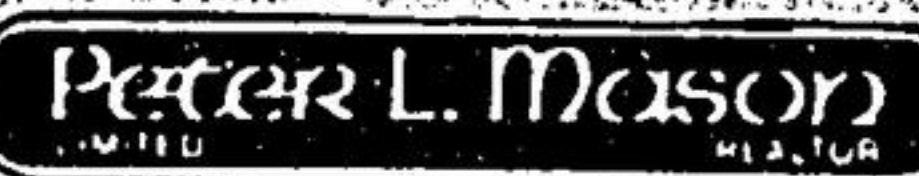


EAST REALTY LTD
291-9988



UNIONVILLE \$224,900

Nestled on a huge 100 x 150 ft. treed lot sits this charming 3 bedroom home with plaster walls, hardwood floors, central air & beautifully finished basement. Toni Sullivan 291-9988.



THE SIGN OF QUALITY

474-1710

HWY. #7 UNIONVILLE



OPEN HOUSE SAT. 2-4 12 FOLLETT CRT., MARKHAM

Fabulous Georgian home on quiet court. 4 bdrms., prof. finished basement, premium lot. Call Rosemary Reid 474-1710 or 640-7987.



KEN MAY



640-2223

ROYAL LePAGE REAL ESTATE SERVICES LTD. REALTOR
2525 PHARMACY AVE.



SPRING TIME ON THE FARM

Breathe the country air. Charming 2-storey home, open concept, main floor family room, paved road close to Stouffville. Barn and paddocks for the horses or sheep. Flower beds and garden for the green thumb. Try your offer this week-end. Call Ken May 640-2223 or Res. 640-5119.



AMIN JADVAJI



ROYAL LePAGE REAL ESTATE SERVICES LTD. REALTOR
2525 PHARMACY AVE. 497-2555



OPEN HOUSE

50 Stather Cres.

(McCowan & Denison)

Sat. Mar. 28 2 p.m. - 4 p.m.

Sparkling new 4 bedroom home 2000 sq. ft. Close to super centre. Close to Bus. Stop. Come and See this Home with Amin Jadvaji.