



RE/MAX®

Re/Max Imperial Realty Ltd. Rltr. 640-4960 Re/Max Markville Realty Ltd. Rltr. 471-6600
 Re/Max Scugog Realty Ltd. Rltr. 640-6755



NOW OR NEVER IN BALLANTRAE
 Last call for 2 1/2 acres with house, garage, and barn in Ballantrae. Renovations start March 25th. For information call Ian Batt, Re/Max Imperial Realty Ltd. 640-4960



IAN BATT



JUST LISTED
 Backsplit on 166 ft. lot. 3 bdrm., hardwood flrs., extra kit in downstairs for mother-in-law. Asking \$164,900. Mary Jean Sider, 640-4960. Re/Max Imperial Realty Ltd. Rltr.



JEAN SIDER



OPEN HOUSE SATURDAY MARCH 21st, 2-4 P.M. AT 159 RAYMERVILLE DRIVE
 Come see this 2800 sq. ft. Greenpark beauty! June Williamson, bus. 471-6600, res. 294-9796. Re/Max Markville Realty Ltd. Rltr.



JUNE WILLIAMSON



STOFFVILLE COMMERCIAL
 Open up your own shop in this lovely little home. Village pool to relax in the hot summer months. Asking \$163,000. Mary Jean Sider, 640-4960. Re/Max Imperial Realty Ltd. Rltr.



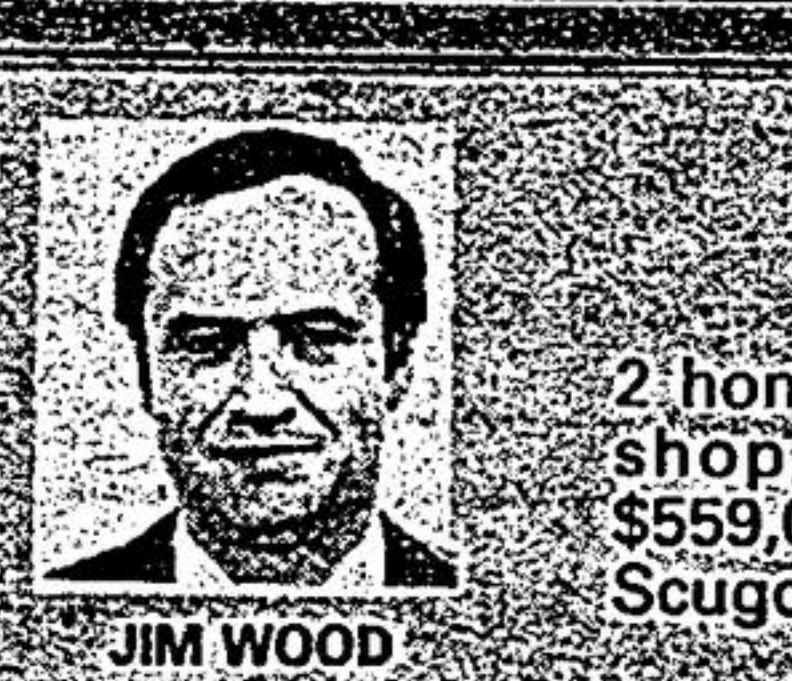
JEAN SIDER



CENTURY EXCELLENCE
 This early Canadian farm home is set on 1 1/2 park like acres, restored and updated services, decorative tin ceiling in liv. rm., spacious fam. rm., and large country kit. Classy living within 1 hr. of Metro. Jim Corrigan, 640-6755, res. 852-7518. Re/Max Scugog Realty Ltd.



JIM CORRIGAN



175 ACRES - TREE FARM/ FISH FARM OR HORSES
 2 homes, horse barn, drive shed and workshop, 40,000 trees, 6 ponds and more. \$559,000. Call Jim Wood 640-6755. Re/Max Scugog Realty Ltd.

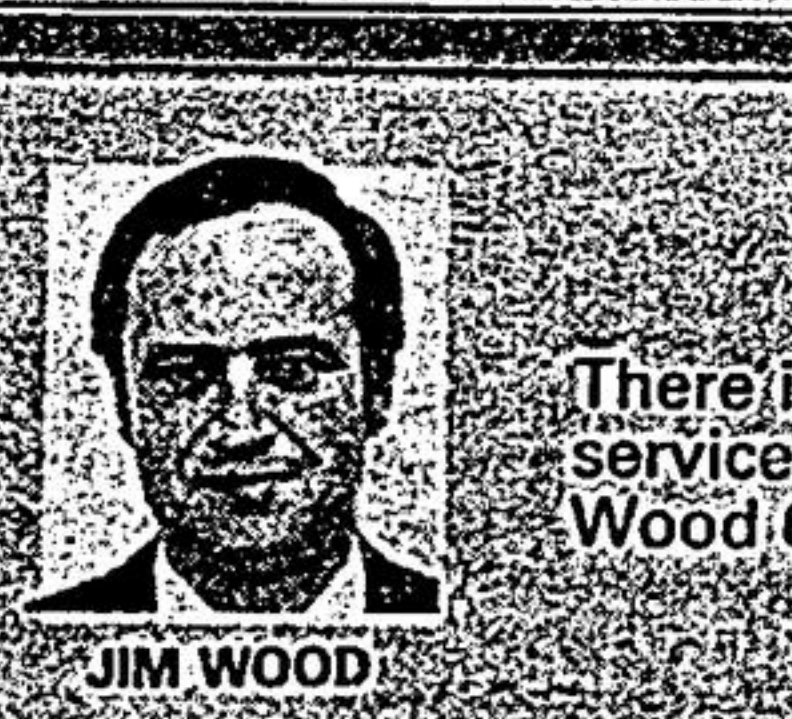
JIM WOOD



MARKHAM BUNGALOW 1ST TIME OFFERED
 Established area, lot 70 x 156, cared for, 3 b/r home with new kitchen & 2-4 pce. baths, breezeway and sun deck. For viewing call Joyce Spensley, Bus. 471-6600, Res. 477-6136. Re/Max Markville Realty Ltd. Rltr.



JOYCE SPENSLEY



APARTMENT BUILDERS
 There is a site available in Uxbridge on town services. Call for more information. Call Jim Wood 640-6755. Re/Max Scugog Realty Ltd.

JIM WOOD

RE/MAX RE/MAX RE/MAX RE/MAX RE/MAX RE/MAX RE/MAX RE/MAX RE/MAX RE/MAX RE/MAX RE/MAX RE/MAX RE/MAX RE/MAX RE/MAX

Safeguard Real Estate Limited Realtor



EVELYN BLACK



MARKVILLE EXCLUSIVE A GREAT INVESTMENT
 \$169,900. 3 bdrm., main floor family room with fireplace, 5 appliances, w/o to patio, super location. Call Evelyn Black at 471-4900.



EVELYN BLACK



MARKVILLE BUNGALOW GREAT LOCATION
 \$159,900. 2 bdrm., beauty facing park. Central air, w/o to deck, many upgrades. Won't last. Call now Evelyn Black at 471-4900.



BO JENSEN



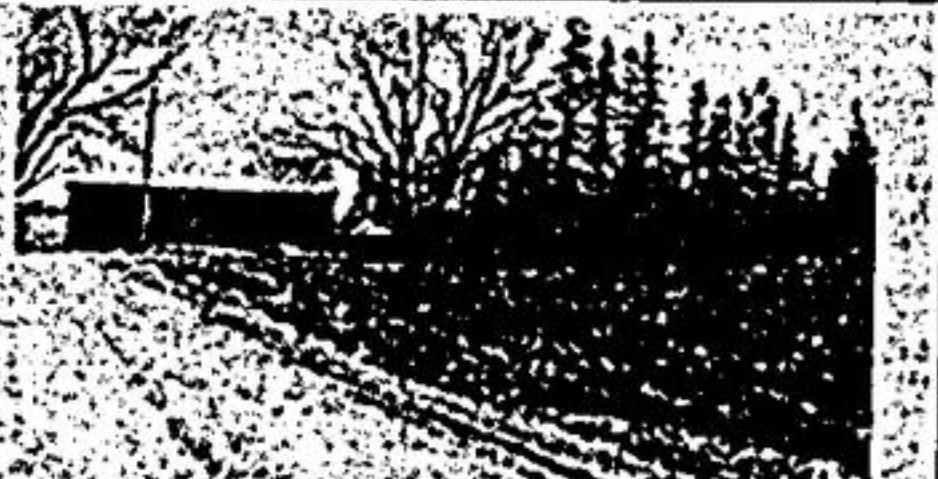
ROOM TO ROOM
 Whitevale - 2 storey, 4 bdrm., 1 acre of land fully landscaped, sides on to a ravine. A terrific family home and very close to city limits. Call today Dianne Woodcock/Bo Jensen 471-4900.



DIANNE WOODCOCK



EARL ATKINSON



100 ACRE FARM JUST NORTH OF MARKHAM
 15 acres of mixed bush, 85 acres of workable land rented out for crops. 2 streams, spring fed, underground drainage, farm house, barn, driving shed. Additional information available with listing agent. Call Earl Atkinson 471-4900.



DIANNE WOODCOCK



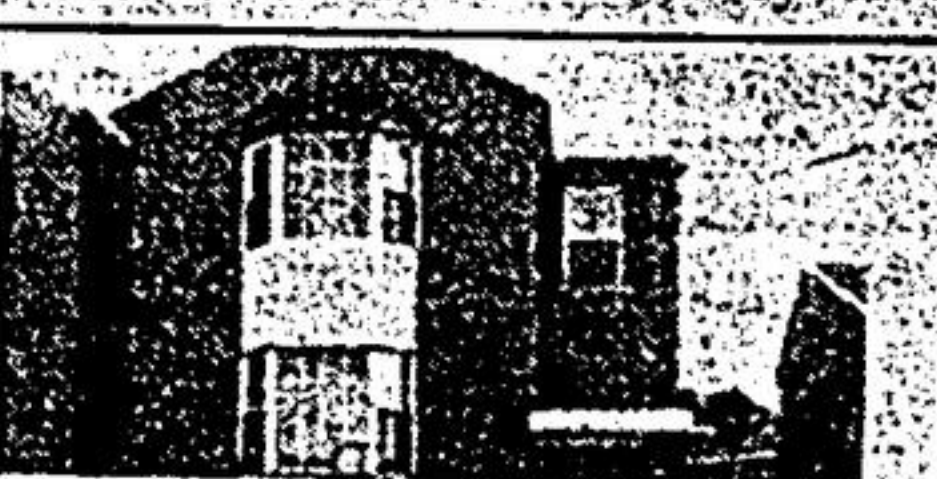
A TOUCH OF CLASS
 Kennedy & Steeles. Designed for today's modern family, professionally decorated from top to bottom, kitchen overlooks gorgeous 21' family room. Hurry, it won't last! Dianne Woodcock, Bo Jensen 471-4900.



BO JENSEN



BO JENSEN



VIVE LA DIFFERENCE! STEEL'S - KENNEDY
 Unique 4 bedroom multi level "Highgate" home, bright eat-in kitchen with walkout, large family room, the master bedroom is out of this world with 2 walk-in closets and 4-pc. ensuite. A rare find for \$236,900. Call Bo Jensen/Dianne Woodcock 471-4900.



DIANNE WOODCOCK