

Economist/Tribune

showcase



CHARLOTTE LOGVINOFF



ROYAL LePAGE REAL ESTATE SERVICES LTD. REALTOR



EXECUTIVE RANCH BUNGALOW

In the Heart of Old Markham
Superb craftsmanship throughout, unique layout, finished lower level, large entrance, 2 fireplaces, built-ins galore. Make an offer. For appointment to view call Charlotte Logvinoff 284-4751 or 283-6568.



MAXINE MANN



MARQUIS REALTY LTD.

HELP! HELP!

Clients of mine need a BUNGALOW. Preferably in the Sherwood Forest area.

Please Call Maxine Mann
298-3113



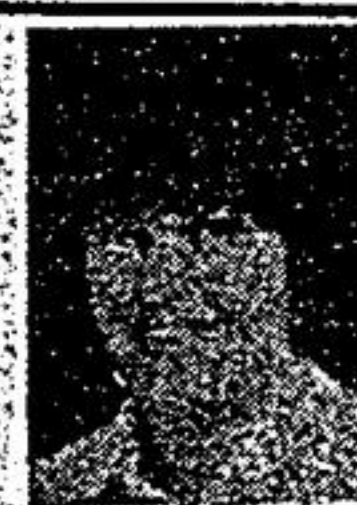
GAYLE McCONNELL

Town Living
Realty Limited
Realtor



10 ACRES STOUFFVILLE EAST

GOOD COMMUTING TO 404 via paved road from this 3 bedroom ranch bungalow with 3 baths, two walk-outs to cedar deck with view of 7 ACRES of evergreen trees. Living room has cathedral ceiling and wall to wall brick fireplace. "PAR EXCELLANCE." FOR MORE INFORMATION call Gayle McConnell 640-2225, 473-2440, 640-4712.



ANNE POWELL



RE/MAX SCUGOG REALTY LIMITED RLTR.



24 ACRE HOBBY FARM

Super location just outside Uxbridge. Cosy 3 bedroom home with large sunporch and updated kitchen, barn, large strawberry and asparagus beds. \$179,000. Anne Powell, res. 852-5285. Re/Max Scugog Realty Ltd 640-6755.



DALE MATTHEWS
Town Living
Realty Limited
Realtor

TUDOR STYLE BUNGALOW UXBRIDGE

Stunning 6 room executive home on 2/3 of an acre. Rural setting, but close to schools and shopping. An exceptionally well constructed home with a custom built oak kitchen, oak staircase, EXTENSIVE OAK TRIM! Must be seen to be appreciated!

SEE IT TODAY WITH
DALE MATTHEWS
640-2225, 473-2440, 852-3006



JIM WOOD



RE/MAX SCUGOG REALTY LIMITED RLTR.



SCENIC SETTING \$209,900.

Spacious & comfortable 3 bedroom raised bungalow close to Uxbridge, private hilltop setting with panoramic view, large gracious living & dining rooms with beamed ceilings. 2 full baths, 2 1/2 car garage, 10 acres. Jim Wood 852-3237. Re/Max Scugog Realty Ltd. 640-6755.



STEVE BLAKE



VENDOR BOUGHT! - OPEN HOUSE

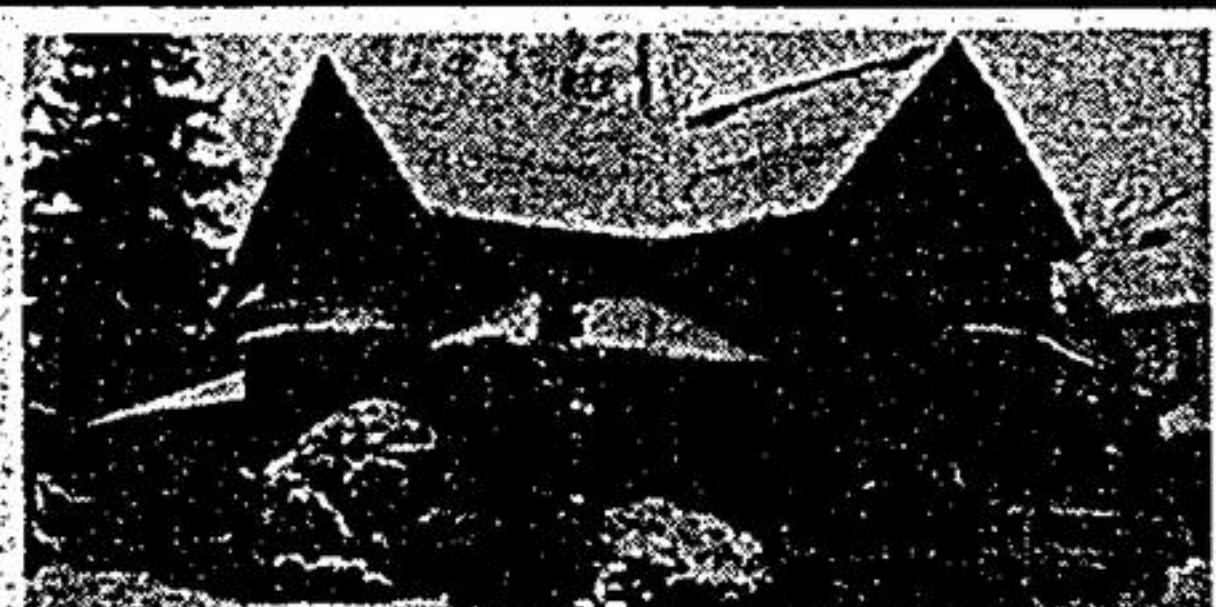
JAN. 24 & 25, SAT. & SUN. 1 P.M. - 4 P.M.
You'll see the value in this 3,000 sq. ft., Bramalea built, brick, 2 storey home. Triple garage, set on a lot approx. 13,000 sq. ft. In Unionville's best neighbourhood. Call Steve Blake 497-7922 or 497-2949.



JIM PAYNE



RE/MAX EXECUTIVE REALTY INC. RLTR.



STOUFFVILLE CENTURY!

Prestige area of Stouffville. 2500 sq. ft. brick 2 storey, main floor family rm., elegant dining rm., country kitchen with w/o, 2 baths, built-in gallores, walk to shopping & schools. Just listed at \$219,900. Jim Payne 640-4960, res. 640-1768.



DIANE SHORT



LYNDA KEAY



MARQUIS REALTY LTD.



UNIONVILLE

\$237,900. Fantastic 4 bedroom home with in-ground pool and large lot. Finished from top to bottom. To view this home call Lynda Keay or Diane Short 298-3113.



Vera Lidster



RE/MAX EXECUTIVE REALTY INC. RLTR.



CENTURY HOME STOUFFVILLE

Spacious family home in lovely neighbourhood. Extensive renovations recently completed, prof. landscaped yard, shows beautifully. \$245,000. Vera Lidster 640-4960.



ADELE GALLO

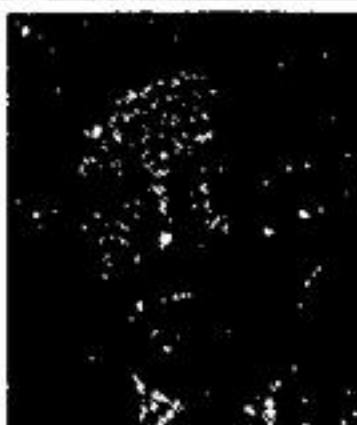


474-1212 640-1200



SUPER LOCATION!

Two storey brick, 4 bedroom, features main floor family room with floor to ceiling corner fireplace and walkout to patio. Large eat-in kitchen with adjacent main floor laundry, huge master bedroom with double closets and 4 piece ensuite, neutral decor. Close to all amenities. Compare value at \$184,900.00. Call Adele Gallo at 474-1212.



IAN BATT.



RE/MAX EXECUTIVE REALTY INC. RLTR.

COMMERCIAL ON MAIN
C1 zoned property on Main St. Stouffville over 1/4 acre some rental income and plenty of potential for development. Ian Batt. 640-4960.

HIGHWAY 48 FLORIST BUSINESS
282 feet of frontage this property can be bought, as a going concern at \$379,000 or land and house only for \$329,000. Call Ian Batt. 640-4960.

RE/MAX EXECUTIVE REALTY INC. REALTOR