



Giving the gift of life

Alf Spence (left) is assisted by ladies auxiliary volunteer Helen Taylor after making his 25th life-time blood donation at a clinic held Friday at Stouffville Legion Hall. A total of 143 units of blood were collected, while 12 potential donors were rejected for health reasons. The Red Cross Society holds its next Stouffville clinic in April.

—Chris Shanahan

Chances Are sells goods to boost Cottage Hospital

UXBRIDGE—A shop opened last spring by the Uxbridge Cottage Hospital Auxiliary has already begun to pay large dividends.

In its first six months of operation, sales at Chances Are generated about \$13,000 for the purchase of an Autoclave (sterilizer) for the hospital.

The store, located at the southwest corner of Main and Brock Streets, across the hall from the Tiers drugstore, features a variety of second-hand

merchandise at reasonable prices.

Chances Are is co-convened by Jean Clark and Marg Locke and run totally by fellow auxiliary volunteers.

Support from the whole community is also required to make the fund-raising venture a success. Citizens can help in two ways: (1) By donating clean, gently-used clothing (in season), pocket books and small household items that are in good condition.

(2) By shopping in the store — you may be pleasantly surprised by the fine selection of merchandise.

"The purpose of this shop is to provide an alternative way of shopping and to raise funds for the purchase of equipment for the Cottage Hospital," according to a spokesperson. "We cater to the whole family and you can't beat our prices!"

Store hours are Tuesday to Saturday from 10 a.m. to 4 p.m. Chances Are is closed Mondays.

Bud Watson's Gem Cave

Healing stones big at Uxbridge store

UXBRIDGE—If you're looking to cure a hangover or assorted other ailments, how about tapping the healing power of quartz crystals?

Many area residents subscribe to the belief that various gemstones, including amethyst in its natural form, possess certain holistic powers.

And Bud Watson of Uxbridge Gem Cave is one of the men they visit when in search of these supposed mineral remedies.

Recently, one lady was in looking for four diamond crystals to place on each side of her mother's bathtub. This, she believed, would aid the natural healing process and make the woman feel better.

What began as a hobby for Mr. Watson has developed into a burgeoning gem business providing a wide range of related services.

Mr. Watson, a member of both the Canadian Gemologist Association and the Gem and Mineral Federation of Canada, had been his involved in the field for about 18 years.

But it was only after he retired from his job with the Ontario government that he and wife Elizabeth launched the Gem Cave as a full-fledged business.

And they're excited about a recent change of location to 58 Brock Street West, the home for 37 years of Uxbridge jeweller Lorne Andrews.

When he can find time from a busy sales schedule, Mr. Watson designs and crafts much of his store's own jewelry. And he and another local man cut all stones except diamonds.

There's also an antique section at the rear of the shop

along with a wide selection of ceramics and other gift items. The Gem Cave is booked in

for the Metro East Bridal and Fashion Show, set for Pickering Jan. 21-24.

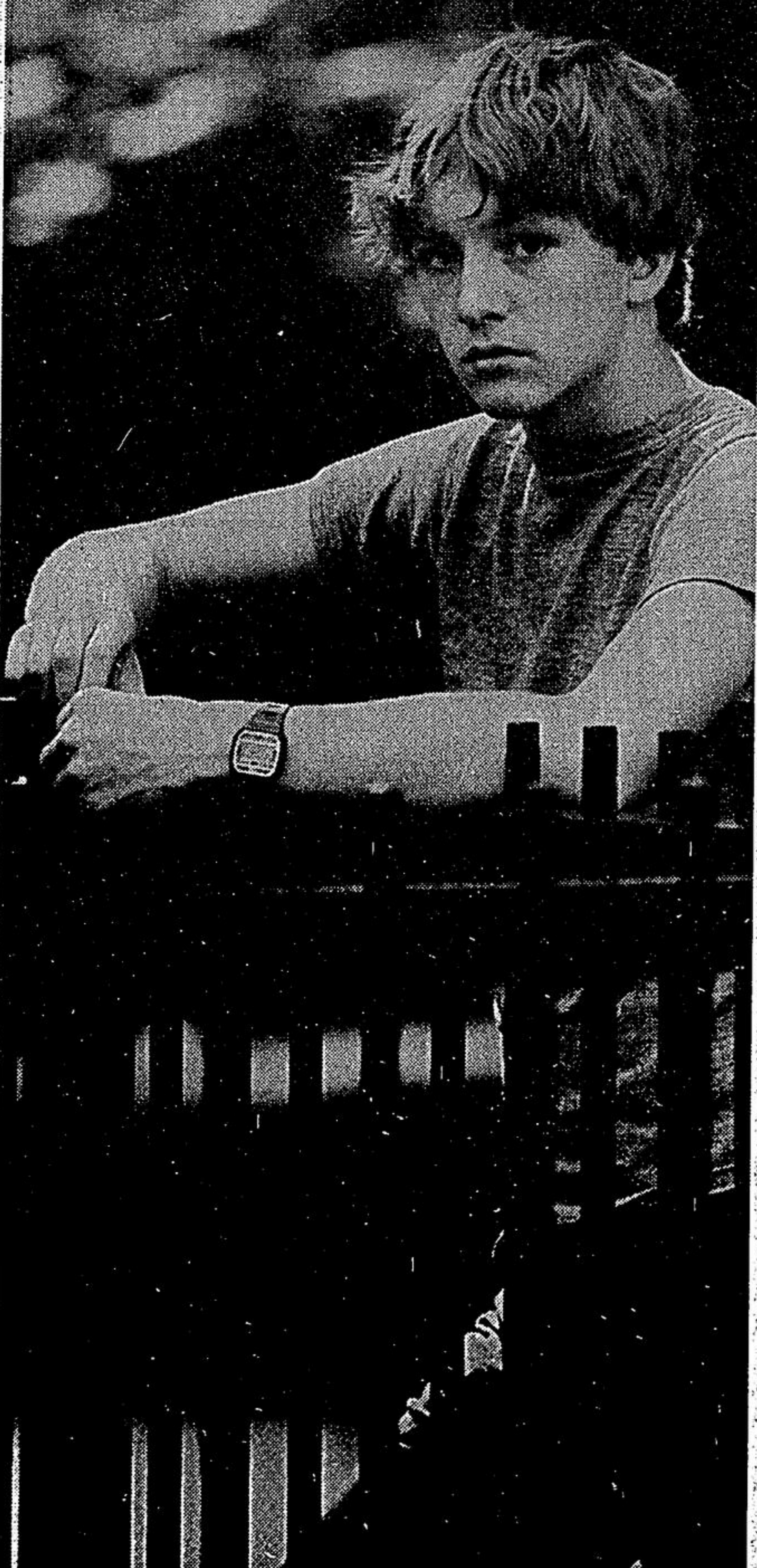


A gigantic geode!

Bud Watson of Uxbridge Gem Cave hoists a large Brazilian geode stone that's featured in his store window display at 58 Brock Street West. After a busy Christmas season, the merchant is gearing up for Pickering's Metro East Bridal and Fashion Show later this month.

—Chris Shanahan

"People didn't want my dad living in their neighbourhood"



"If you knew my dad you'd really like him. I can't understand why some people who didn't even know him didn't want him to live in their neighbourhood. It just doesn't make sense to me."

Just about everyone agrees that supportive housing for people recovering from mental illness is a good idea. No one wants to see anybody needlessly institutionalized. We'd all like to see these people helped back into the community in a supportive and supervised environment.

There's one other thing on which too many people still agree. Supportive housing belongs in someone else's neighbourhood.

And that's a shame.

It's a shame because supportive housing provides that vital stepping stone between hospitalization and re-integration into the community. It's a shame because much of people's opposition to supportive housing in their neighbourhood is based on fear and ignorance. Based on myths.

Myths about who these residents are, myths about plummeting property values and myths about increased neighbourhood traffic.

We've produced a brochure about supportive housing that gives straightforward answers to these and other questions people have about supportive housing in the community.



A CARING COMMUNITY IS THE ANSWER.

For more information please complete and mail this coupon or call 1-800-268-1121.

- I would like to:
 - Receive your brochure "Neighbours"
 - Find out how I can become a volunteer in my community.
 - Know more about the activities of the CMHA, and how I can show my support.

Name _____

Address _____

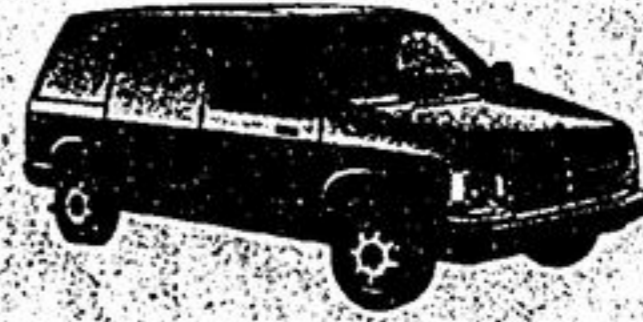
Postal Code _____ Telephone _____

Canadian Mental Health Association,
Ontario Division
56 Wellesley St. W., Suite 410
Toronto, Ontario
M5S 2S3

MS 1/12/87

LEASE!

1987 DODGE MINI VAN



2.6 Litre engine, automatic transmission, electric rear defroster, dual oversize mirrors, AM radio, driver & passenger seating, power steering, full size spare, 2000 lb. payload.

\$299⁵³* MOS.

1987 B150 VAN



3.7 litre engine, 6 cylinder, automatic transmission, power steering & brakes, heavy duty suspension, low mount mirrors, driver & passenger seating, rear door glass.

\$305⁰⁰* MOS.

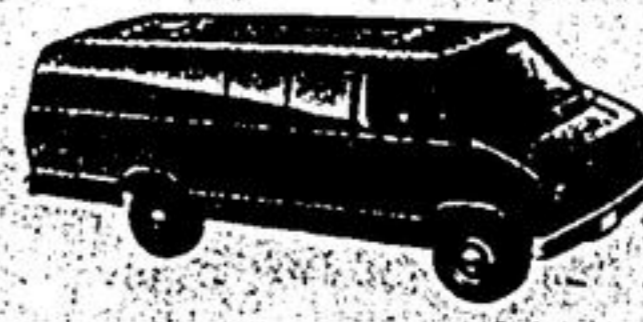
1987 B250 RAMVAN



Automatic transmission, 318 c.i., V-8 engine, heavy duty suspension, low mount mirror, driver & passenger seating, full size spare.

\$315⁹⁸* MOS.

1987 B250 MAXI VAN



Automatic transmission, 318 c.i., V-8 engine, rear door glass, low mount mirrors, driver & passenger seating, full size spare.

\$335⁰⁰* MOS.

LONGMANS MARKHAM DODGE CHRYSLER

On Hwy. 7 Just East of McCowan Rd.

471-1500

*Lease based on 48 months & approved credit

