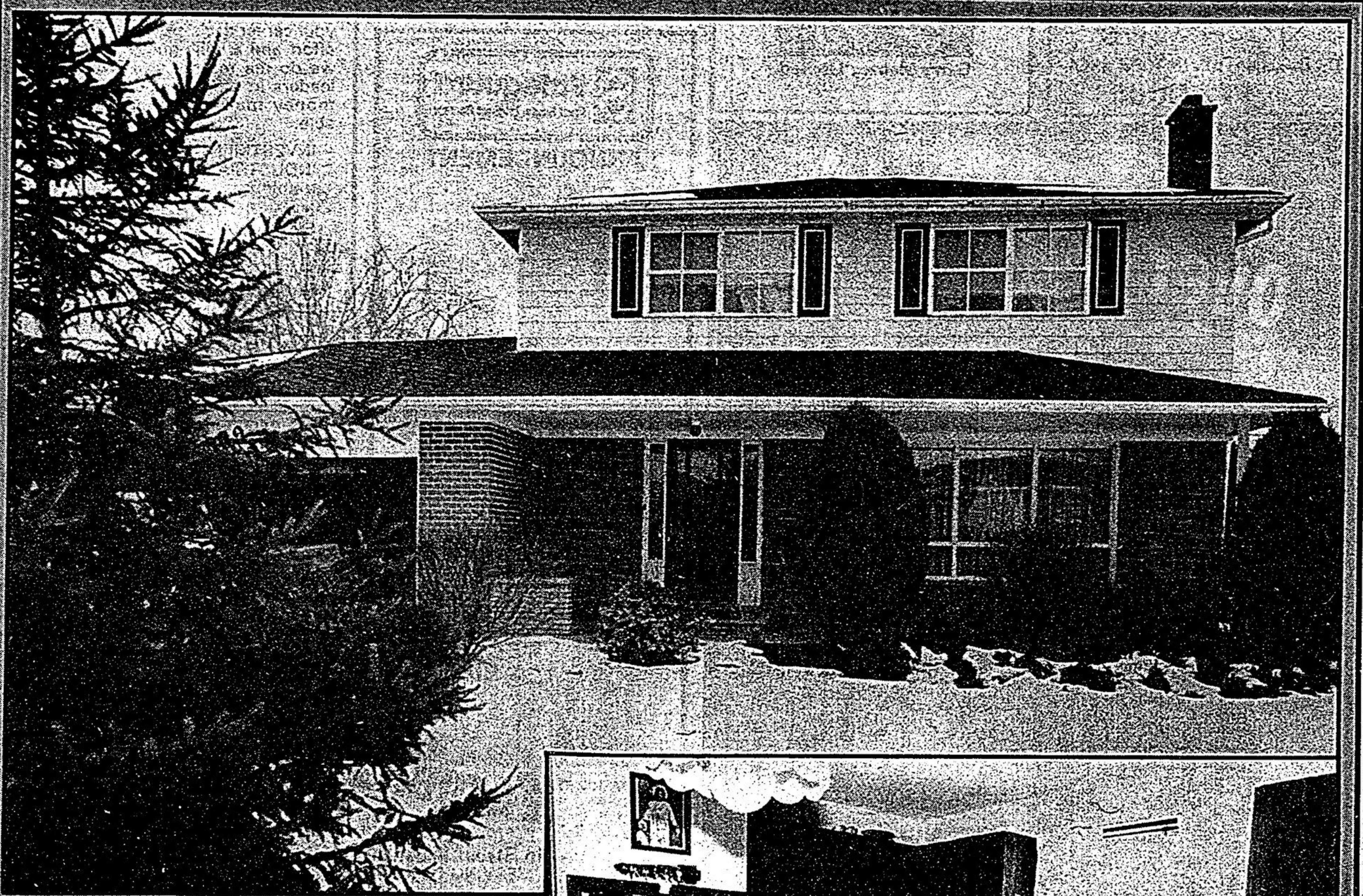


Weekender

# Real Estate

294-2200  
640-2100



## Weekender Home of the Week

This home at 459 Elm Road in Stouffville features four bedrooms, L-shaped living/dining room, workshop and sunroom. There's a large L-shaped recreation room with fireplace and wet bar. The lot is 60 x 142 ft. and backs onto open fields. It's close to amenities and within walking distance of St. Marks School. The home is listed at \$168,000 with Century 21 Stouffville. The agents are Frank and Connie Hippman at 640-3131 or 640-1149. — Sjoerd Witteveen

