

More info required on hotel proposal

By CHRIS SHANAHAN
Staff Reporter

A planned 50-unit motel has to clear some final hurdles before development can begin at the southeast corner of Woodbine Ave. and Bloomington Rd. in Whitchurch-Stouffville.

The proposal, which includes a restaurant, banquet hall and recreational facilities all in a California-style setting, proceeded through the public meeting stage of the planning process Jan. 6.

The hotel complex is slated for a 42.3 hectare (104.5 acre) property which is presently zoned Rural and is used for agricultural purposes. Developer Milissa Holdings Limited has made application for both an Official Plan and zoning bylaw amendment.

Though these applications have received Council support, Town Planner Michael Saunders said the project's future is still uncertain because "key comments" are still pending from York Region's Health Unit.

Mr. Saunders noted that while there have been no official objections to the development, both the Health Unit and the provincial Ministry of Agriculture and Food have voiced concerns.

"The Ministry of Agriculture and Food has requested additional justification in regards to the removal of the site from active agricultural use, and to justify the necessity of having a motel-restaurant complex in this particular location," he reported. "The regional Health Unit wants additional background information in the form of a preliminary engineering analysis of the site soils and water table."

The new hotel received a verbal boost Tuesday from Ward 1 Councillor Margot Marshall, who said "I feel the town of Whitchurch-Stouffville needs a hotel." The municipality presently has just one facility offering overnight accommodation — the Maples Lodge on Hwy. 48 south of Ballantrae.

Marlcourt

A group led by Ken Sandiford of Stouffville's A&S Construction has purchased the town's Marlcourt subdivision property and plans to develop 25 "high quality, elegant" homes there.

The developers want to first undertake a study, at a maximum cost of \$75,000, to determine an adequate water source at the site, which is a continuation of Loretta Cres. extending to the York-Durham Townline.

"They (the developers) want to get going with this development and they're willing to front-end the cost (of a water study)," planning consultant Randy Alcorn told a Jan. 6 in-committee meeting of Whitchurch-Stouffville's planning advisory committee.

Info about high school

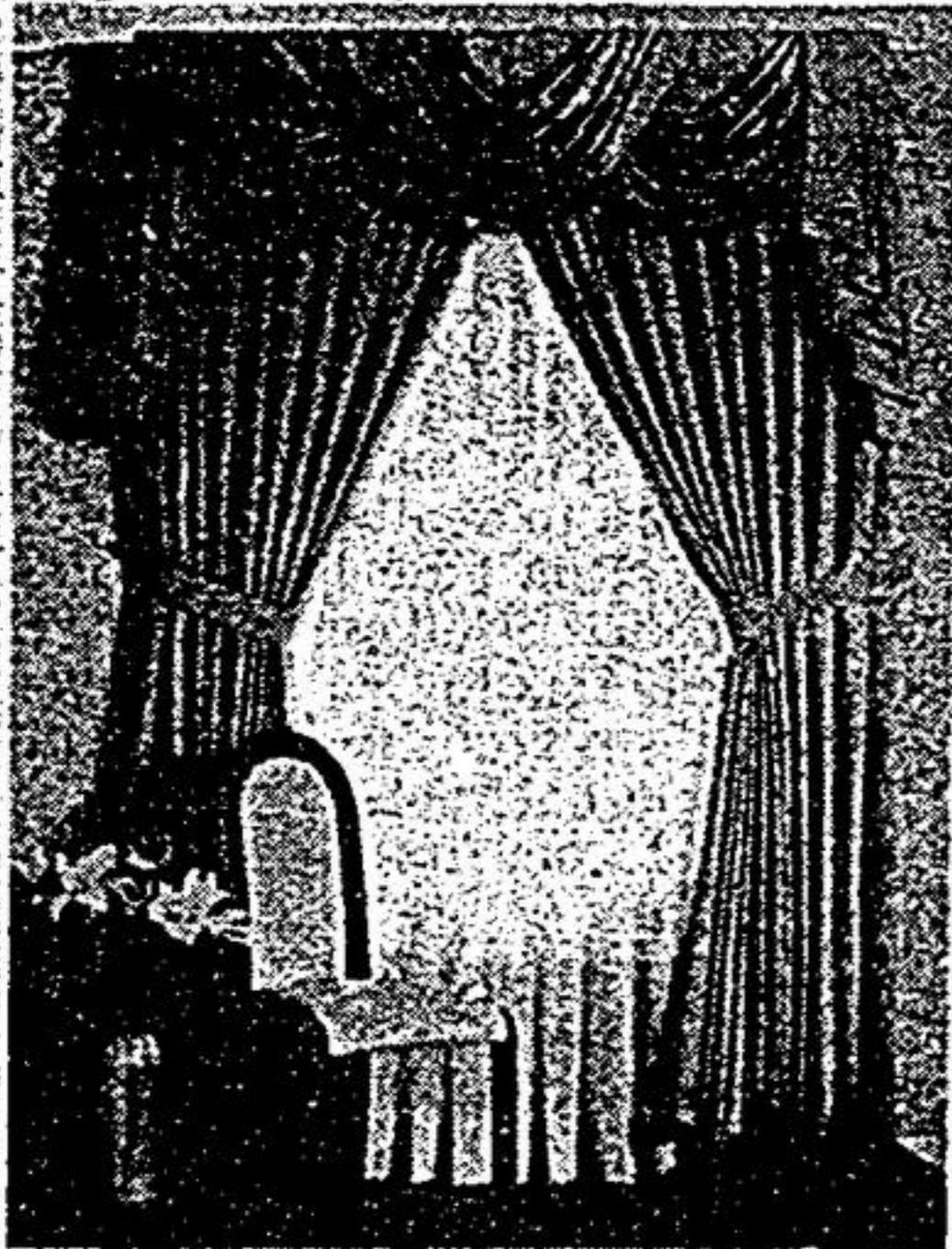
Parents of Grade 8 students are invited to a High School Information Night to be held Monday, Jan. 12 at 7 p.m. at Franklin St. Public School. The school is located at 21 Franklin St. in Markham. For more information call 294-5562.

BLINDS N' DRAPES WINDOW FASHION

FROM 30% TO 70% OFF

WE'LL COME TO YOUR HOME, AT YOUR CONVENIENCE
WITH FREE DECORATOR CONSULTATION, PROFESSIONALLY MEASURED,
NO OBLIGATION QUOTATION

DRAPERY



QUALITY SHEERS DESIGNER FABRIC

TERGAL	\$12 ⁰⁰ YD.
POLY LINEN	\$14 ⁰⁰ YD.
POLY SILK	\$15 ⁰⁰ YD.
POLY COTTON	\$16 ⁰⁰ YD.
BOUCLE	\$18 ⁰⁰ YD.
ANTIQUE SATIN—48"	\$12 ⁰⁰ YD.
OPEN WEAVE—48"	\$18 ⁰⁰ YD.
COTTON CHINTZ—48"	\$18 ⁰⁰ YD.
COUNTRY PRINTS—54"	\$18 ⁰⁰ YD.
MOIRES—48"	\$22 ⁰⁰ YD.

**RUSSIAN, BALLOONS
ROMANS, AUSTRIANS**
\$7.50 SQ. FT. LABOUR

VENETIANS



IN STORE STOCK 1" MINI VENETIAN BLINDS

WIDTH / HEIGHT	PRICE	WIDTH / HEIGHT	PRICE
18"x45"	\$12 ⁰⁰	38"x45"	\$25 ⁰⁰
20"x45"	\$13 ⁰⁰	40"x45"	\$26 ⁵⁰
22"x45"	\$14 ⁵⁰	44"x45"	\$29 ⁰⁰
23"x45"	\$15 ⁰⁰	48"x45"	\$31 ⁵⁰
27"x45"	\$18 ⁰⁰	54"x45"	\$35 ⁵⁰
31"x45"	\$25 ⁵⁰	60"x45"	\$39 ⁵⁰
33"x45"	\$22 ⁰⁰	72"x45"	\$47 ⁵⁰
36"x45"	\$24 ⁰⁰		

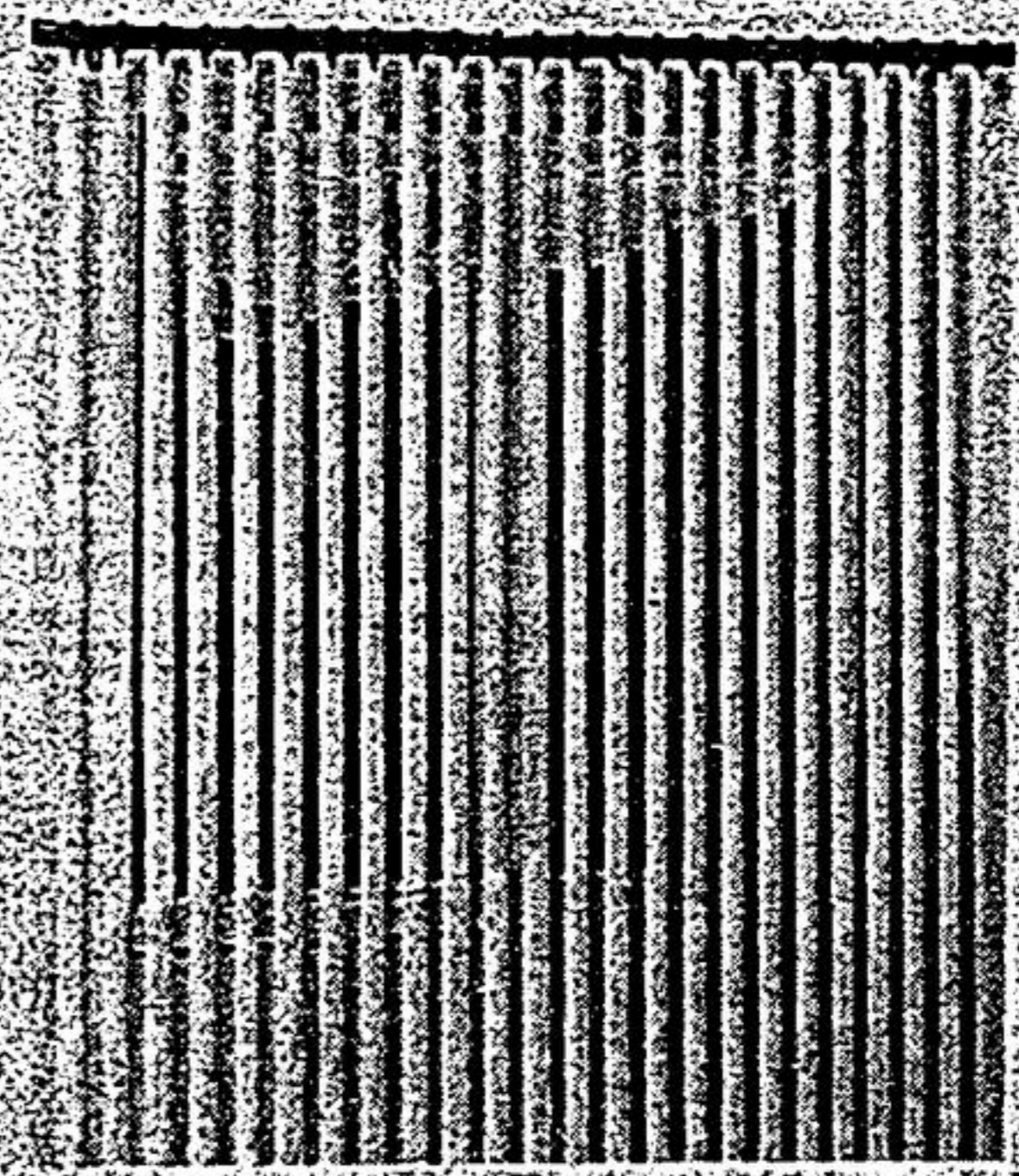
White & Ivory Only

ROLLER SHADES 100% SUNOUT

	37 1/4"	43 1/4"	49 1/4"	55 1/4"	64 1/4"	73 1/4"
PLAIN HEM	21 ⁰⁰	25 ⁰⁰	31 ⁰⁰	38 ⁰⁰	49 ⁰⁰	53 ⁰⁰
FR'NGE HEM	25 ⁰⁰	33 ⁰⁰	39 ⁰⁰	45 ⁰⁰	58 ⁰⁰	65 ⁰⁰

1" VENETIAN BLINDS CUSTOM MADE

VERTICALS



CUSTOM-MADE VERTICAL BLINDS

—PURCHASE ANY CUSTOM-MADE
VERTICAL BLIND AT 50% OFF AND
RECEIVE A FREE MATCHING
VALANCE

EXAMPLE	REG. PRICE	OUR SALE
UP TO: 72"x84"	\$252 ⁰⁰	\$126 ⁰⁰
(FABRIC) 84"x84"	\$290 ⁰⁰	\$145 ⁰⁰

IN-STORE STOCK PATIO DOOR VERTICAL BLINDS

	FABRIC	PVC VINYL
72"x84"	\$99 ⁰⁰	\$59 ⁰⁰
85"x84"	\$109 ⁰⁰	\$69 ⁰⁰

Valance Inc.

FREE SHOP AT HOME SERVICE BLINDS N' DRAPES

WINDOW FASHION

(Division of Scarborough Window Shades Ltd.)

BRAMPTON
452-7755

SCARBOROUGH
291-8538

MARKHAM
294-9513

PICKERING
831-3412

AJAX
686-2200

