

Economist/Tribune

showcase



ROSS HETHERINGTON LORETTA LAVELL



Gerry Meharg Ltd.

A UNIQUE HISTORICAL HOME

Exquisite 6' stained glass. Large rooms with bay windows. Set in park-like double lot. Possible third lot severance. To view this superb property, please call: Ross Hetherington, Off. 640-3131, Res. 640-2441, or Loretta Lavell, Off. 640-3131, Res. 640-4523.



LEE WELDON



RE/MAX SCUGOG REALTY LIMITED RLTR.



ONE OF UXBRIDGE'S FINEST \$188,900.
Stately brick on oversized lot with trees and large garage, 3 beautiful bays, lovely wood floors, fireplace, open staircase, huge dining room, outstanding pine kitchen with cookstove, main floor laundry, all appliances, remarkable trim and doors. Call Lee Weldon 640-6755; 1-800-263-3288, Res. 640-2770. Re/Max Scugog Realty Limited.



LEE WELDON



HORSES? BALLANTRAE NORTHEAST \$234,900.

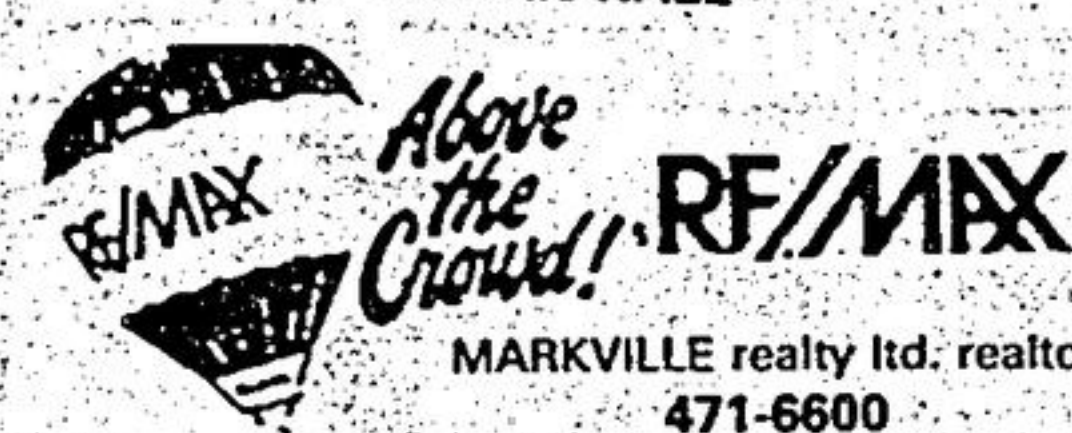
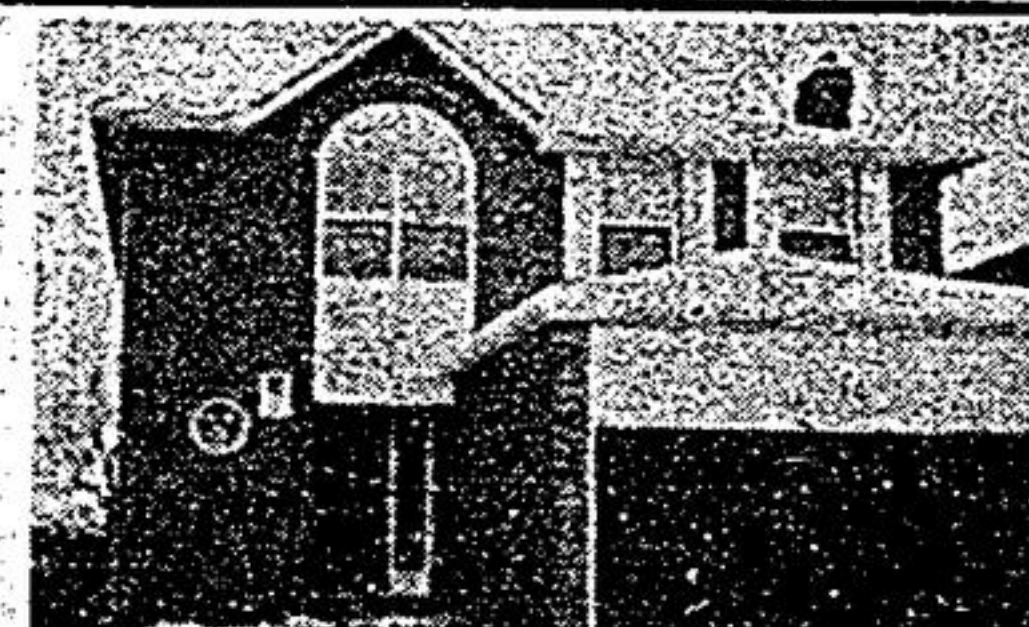
10 acres, quality built brick, 3 bedroom home, 1 year new, heated garage, formal fireplace, spacious and bright "L" shaped living-dining, 2 baths, new steel horse barn. Call Lee Weldon 640-6755, 1-800-263-3288, Res. 640-2770. Re/Max Scugog Realty Limited.



RE/MAX SCUGOG REALTY LIMITED RLTR



SUSAN HALL



MARKVILLE realty ltd. realtor 471-6600

OPEN HOUSE SUNDAY 2 P.M. - 4 P.M.
78 COUPERTHWAIT (NO. 7 & KENNEDY RD.) Come and see this lovely Bramalea home overlooking the ravine! Full of sunlight and pretty views. Call Susan Hall 471-6600 for more details.



AMIN JADAVJI



ROYAL LEPAGE REAL ESTATE SERVICES LTD. REALTOR
2525 PHARMACY AVE.
SERVING UNIONVILLE, MARKHAM, MILLIKEN & SCARBORO AREAS

24 ACRES VACANT LAND STOUFFVILLE

REDUCED TO \$189,900

Facing Island Lake Estate. REDUCED TO SELL. Best Investment! Call Amin.

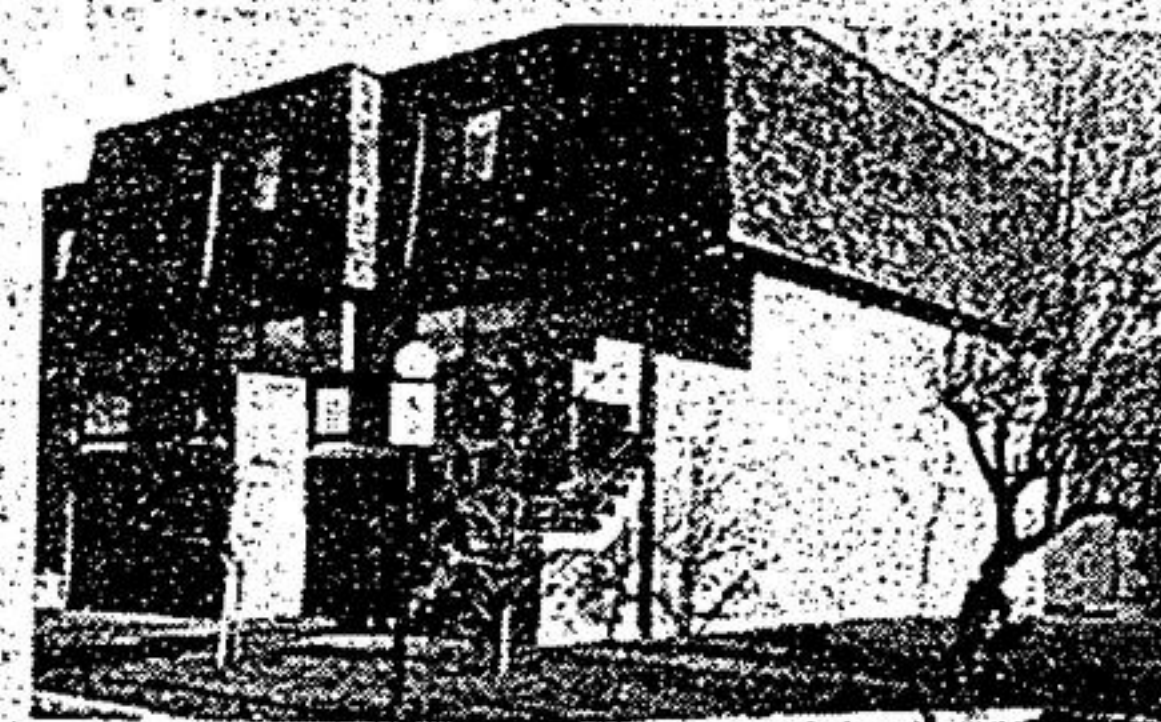
497-2555



WESLA MAGUIRE



ARMOUR REAL ESTATE INC.



3 BEDROOM TOWNHOUSE
High demand area in Unionville — end unit, balcony plus patio. Eat-in kitchen. Low maint. fees. \$149,900. Call Wesla Maguire, 477-2533.



AMIN JADAVJI



ROYAL LEPAGE REAL ESTATE SERVICES LTD. REALTOR
2525 PHARMACY AVE.
SERVING UNIONVILLE, MARKHAM, MILLIKEN & SCARBORO AREAS



134 STIRLING CR. - BRIMLEY & STEELES (Near New Super Centre)

3 bedroom, 2 storey detached with ceramics. Backsplash tiles, close to shopping, schools & transportation. Most popular model - immaculate! For further information call Amin Jadavji 497-2555 or 477-0091.



BOOTS MONTANO



JUSTIN MONTANO



ARMOUR REAL ESTATE INC.



OPEN HOUSE SAT. DEC. 6 1-4:30 P.M.
47 Ashmore Cres. off Kennedy & Denison, 3 bdrms. 2+4pc. baths. Fin. bsment. only \$169,900. Boots or Justin Montano. 477-2533.



NANCY ETHIER



DENNIS CRIBARI



A RARE COMBINATION!

5 bed. plus study, smashing ensuite. Quality construction many upgrades. All this and a lot that's 216 ft. deep! Call now! Nancy Ethier, Dennis Cribari 471-6600.



MARKVILLE realty ltd. realtor 471-6600



SHIRLEY KORTSCHOT



MARKVILLE realty ltd. realtor 471-6600



WHY CHOOSE MUD??

This 4 br. offers dream kitchen, library, family rm., fin. basement, 2 1/2 yrs. BETTER THAN NEW!! \$254,900.

JUST LISTED \$159,500.

Super starter, huge garden, fireplace, appliances. MOVE IN FOR CHRISTMAS!
Shirley Kortschot 471-6600, 294-4574
Re/max markville realty ltd.

**WEEKENDER
REAL ESTATE SECTION**
BROUGHT TO YOU EVERY
SATURDAY MORNING
294-2200

