

Gourmet Corner

By STEVE TREADWELL
This week we feature Escalope Beef with Glazed Creamed Mushrooms & Tarragon.

- Ingredients**
 2 x 4 oz. Beef Escalopes
 4 oz. sliced white mushrooms
 1/2 tsp freshly chopped tarragon
 1 tbs freshly chopped parsley
 1 small onion finely chopped
 1 tsp chopped garlic
 1 oz each brandy and white wine
 1 cup whipping cream (reserve a little to finish the sauce)
 2 tbs Hollandaise sauce
 2 tbs whipped cream

Pound beef between plastic wrap. Heat frying pan, add vegetable oil. Season beef

with little salt and black pepper. Seal in pan for 30 seconds on each side, set on serving plate. Keep warm. Pour off fat, add onion and garlic, cook until transparent, approximately 1 minute.

Add brandy and flame over open flame, add tarragon, mushrooms and white wine. Cook covered for another minute.

Remove mushrooms. Reduce remaining liquid to a syrup consistency. Add cream, reduce until mixture coats the back of a spoon. Return mushrooms to sauce. Cool, fold in Hollandaise, whipped cream and parsley.

Cover escalopes with sauce and glaze under grill until golden. Serve immediately.

melba's

48 WASHINGTON ST., MARKHAM

294-6468

York is FUN!

FOR FURTHER INFORMATION
CALL YORK TOURISM

883-3442

The Tête À Tea

Cafe
&
Patio

The Perfect Place To Host
Your Small Christmas Party
Call Ruth & Book Now!

CLOSED MONDAYS
TUES., WED., SUN. 10 A.M. - 5 P.M.;
THURS., FRI., SAT. 10 A.M. - 9 P.M.

- We'll be serving "Light Suppers"
- Watch our Blackboard Specials
- We Accept Reservations



640-7448

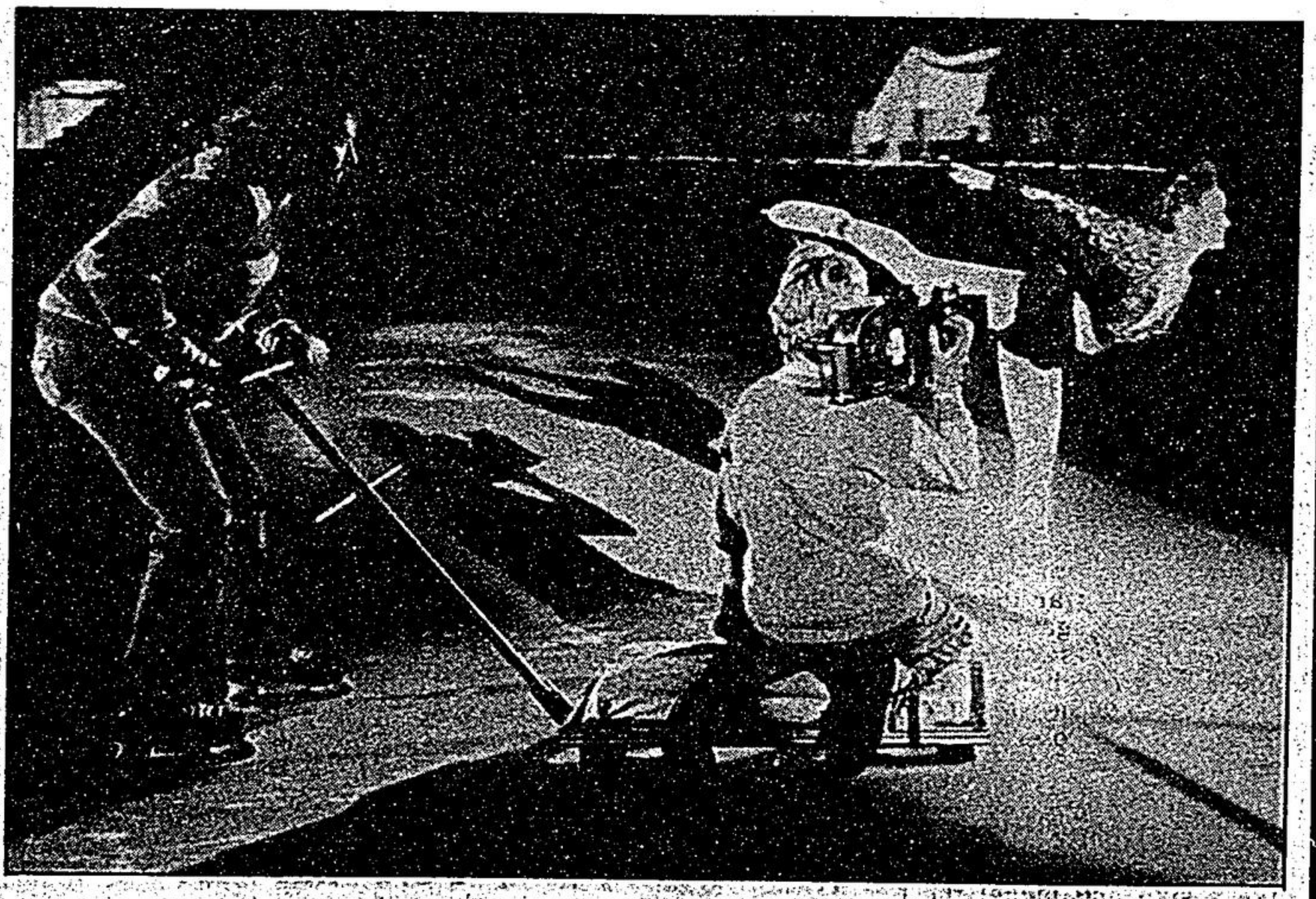
40 MAIN STREET EAST
STOUFFVILLE



Filming figures

CBC film crews were on hand at Centennial arena in Markham this week to film sequences for an upcoming television movie entitled Skate. Above, actress Christianne Hirt (Lori Laroche) glides effortlessly by the camera in one of the scenes during shooting. Below, a hearty group of about 300 Markham District High School students brave the chilly arena temperatures while

hamming it up as extras in the movie. The students spent the day there for the film's crowd sequences. MDHS drama students were also on hand for the event, observing first hand the in and outs (and monotony) that accompany professional filming. In between takes, the crowd met with the movie's young stars for autographs and handshakes. — Sjoerd Witteveen photos



markville cinemas 4
 IN THE MARKVILLE SHOPPING CENTRE
 HWY 7 & MCCOWAN RD. Telephone 477 6314

DOORS OPEN DAILY
 1:10 & 6:30
 FREE PARKING
 Directly in front of cinema
 entrance on NORTH parkway

Now Playing

- Heartbreak Ridge**
 Fri., Mon.-Thurs. 7:00 & 9:35
 Sat. & Sun. 1:30, 4:00, 7:00 & 9:35.
 ADULT ACCOMPANIMENT
 COARSE LANGUAGE
- Song of the South**
 Fri., Mon.-Thurs. 7:05 & 9:00
 Sat. & Sun. 1:40, 3:40, 6:45, 8:40
 FAMILY
 PROGRAMS ARE SUBJECT TO CHANGE OR INFO. PHONE TO CONFIRM FEATURES & SHOWTIMES
- Modern Girl**
 Fri., Mon.-Thurs. 7:15 & 9:10
 Sat. & Sun. 1:35, 3:30, 7:15 & 9:10
 ADULT ACCOMPANIMENT
- Crocodile Dundee**
 Fri., Mon.-Thurs. 7:10 & 9:20
 Sat. & Sun. 1:45, 3:50, 7:10 & 9:20
 PARENTAL GUIDANCE
 SWEARING

ALL SEATS EVERY TUESDAY \$3.00

Exquisite continental cuisine presented in an elegant setting. Fine individually selected wines impeccably served to complement your meal.

—NOW FEATURING—
 The Original Artwork of
"Vanessa Perry"
 BLUE ORCHID HOURS
 Evening Dining Tues. - Sat. 6 - 10 p.m.
 Lunch 12 noon - 2 p.m.
 Sunday Brunch 12 noon - 3 p.m.

Licensed under L.L.B.O.
 Reservations Requested
 640-7724

124 Main St., W. Stouffville