

Economist/Tribune

# showcase



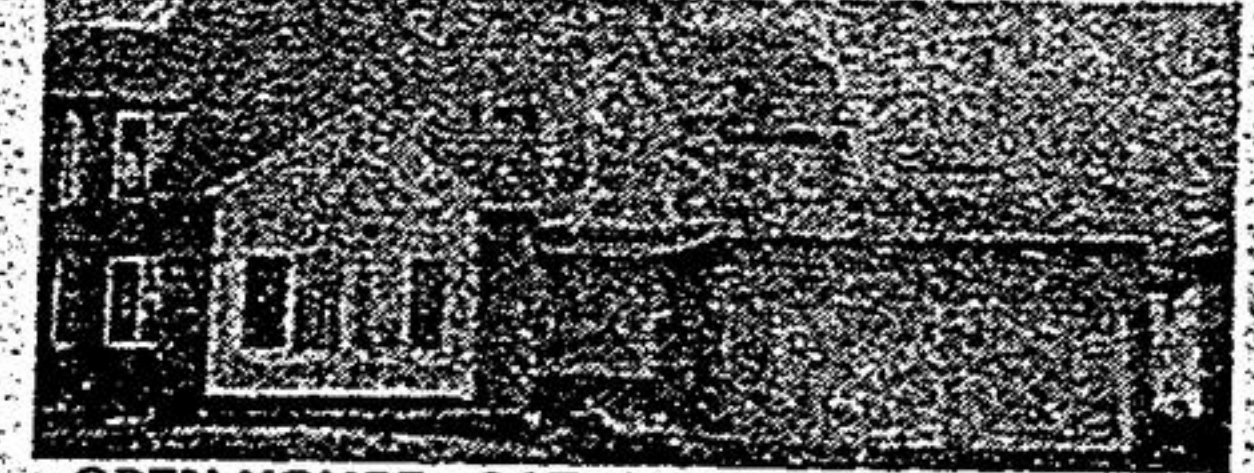
NORMA LARKIN



**JUST RIGHT FOR THE RETIRED COUPLE.**  
This 3 bedroom bungalow almost takes care of itself. Quiet court in Stouffville; spacious sunny rooms and large recreation room for family gatherings ensure your enjoyment. \$165,900. Call Norma Larkin, Off. 640-3131. Res. 640-3591



BILL RAYSON TONY D'ANDRADE



**OPEN HOUSE - SAT. & SUN. 1 P.M. - 4 P.M.**  
60 KERRIGAN CRES.  
Warden Ave. N. of #7 Hwy. Area  
Unionville Executive Home 3250 sq. ft. with almost \$20,000 in upgrades. Main floor family room with fireplace. Main floor library/den with fireplace. 4 month old Great Gulf Home, firm possession date. Call Bill Rayson or Tony D'Andrade 477-5511.



Where dreams come true!



**OPEN HOUSE - SAT. & SUN. 1 P.M. - 4 P.M.**  
UNIONVILLE - 25 NORMANDEALE 16TH  
Warden. Ravine, pool, \$457k, 4 bdrm., 3 baths, extras galore, beautiful decor and landscaping. Betty Deskin, Camelot Castle Realty 691-7653, 445-6802.



NORMA LARKIN



**BALLANTRAE POTENTIAL**  
Cozy 4 bedroom home features large farmhouse kitchen with woodstove. 3+ acres - 265' paved road frontage. Many possibilities. Call Norma Larkin, Off 640-3131. Res. 640-3591.



LEEANA COWARD

Town Living  
Realty Limited  
Realtor



**JUST REDUCED...VENDOR HAS BOUGHT!!**  
Located on a quiet street in Stouffville. Large 70 x 121 foot lot. This bungalow has a finished basement with 2 extra bedrooms, recreation room with air tight stove. Some appliances are included. Call Leana Coward 640-2225, 640-1076 for further information.



JIM PAYNE



**BELIEVE IT OR NOT! \$114,900!**  
Custom 1 1/2 storey brick, 2x6 construction, 2+1 bedroom, hollywood kitchen with walkout to gorgeous pond, high block basement, huge 50' x 150' lot. Only 3 miles to Stouffville. Just listed. Jim Payne 640-4960, res. 640-1768. Re/Max Executive Realty Inc. Rltr.



LEN POWELL



**SPRING POSSESSION**  
4 bedroom on a 64 ft. lot, main floor family with fireplace, finished rec. room with wet bar. Asking \$159,900. Len Powell 640-4960. Re/Max Executive Realty Inc. Rltr.



LEN POWELL



**AUGUST '87 POSSESSION**  
Brick bungalow on a 54 x 210' ft. lot, detached brick garage, heated and insulated. \$139,900. Len Powell 640-4960. Re/Max Executive Realty Inc. Rltr.



DIANE DAVIS



**OPEN HOUSE**  
SATURDAY 2:00 - 4:00  
155 SECOND ST., STOUFFVILLE  
Just move right in and enjoy all the comforts of this 3 bdrm. century home, tastefully decorated, new kitchen, fenced yard. Diane Davis Off. 640-3131, Res. 640-3587.



JIM PAYNE



**STOUFFVILLE - BETHESDA ROAD**  
1+ ACRE \$189,900.  
Custom bungalow, 3 bedroom, finished lower level, pond, fireplace, extras galore incl. enclosed 40' x 20' concrete pool, priced to sell quick. Just listed. Jim Payne 640-4960, res. 640-1768. Re/Max Executive Realty Inc. Rltr.



RODNEY KING



**AFFORDABLE INVESTMENT**  
Excellent returns on this Uxbridge 4 plex., within walking distance to downtown.  
For Income statements, call Rodney King  
Off. 640-3131, Res. 640-2876



RODNEY KING



**INVESTMENT OPPORTUNITY IN MARKHAM**  
10 prime acres just off Hwy. 48. Buy now for the future. Asking \$525,000.  
Call Rodney King to inspect.  
Off. 640-3131, Res. 640-2876