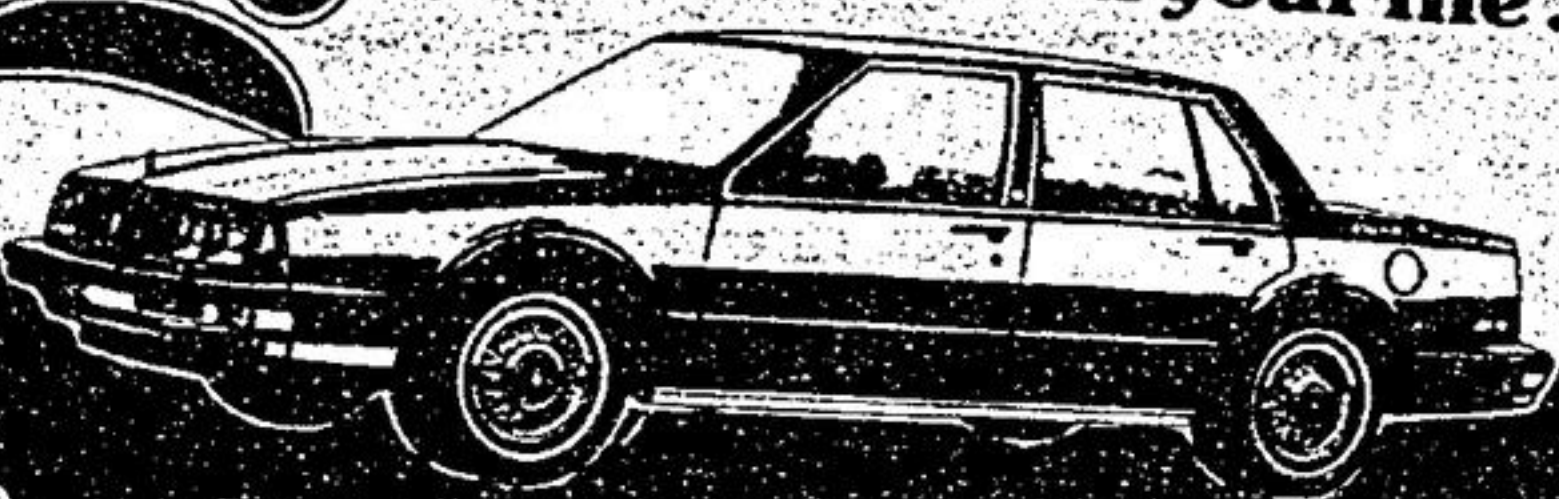


"It's All Right Here In Town" ...

Markham/Unionville Auto Dealers

Contin ... for the Car in your life.

CHEVROLET
OLDSMOBILE



294-1440

HWY 7 · EAST OF McCOWAN

For The Best Selection
of Trucks...

LONGMAN'S
MARKHAM DODGE
CHRYSLER

Hwy. 7 (just east
of McCowan Rd.)

471-1500



Audi



40
In Stock
SALE

GREENBELT MOTORS
7997 KENNEDY RD., UNIONVILLE
477-2421

90
In Stock
SALE

- Sales • Parts • Service
- Service Rentals Available
- Hourly Rates in Service

MAZDA



of **KoVac**

Hwy. 7 (just east of
McCowan Rd.)

294-1210



NORTH MARKHAM HONDA

- Sales • Service
- Parts • Leasing

HONDA
477-2451

Hwy. 7 at Kennedy Rd.
Markham, Ont.

477-2455

**SHOOT FOR
YOUR BEST DEAL.**



**Markville
Toyota**

222 WELLINGTON
STREET WEST
(HWY. 7 EAST OF
MARKVILLE MALL)

"HOME OF THE PROFESSIONALS"
TOPS IN SERVICE, REPAIRS,
SALES, PARTS, LEASING,
RENTALS, BODY SHOP

294-8100

LEASE SPECIAL ON 1987 MAXIMA
In Stock For Immediate Delivery

399⁰⁰ Per Month

Based on 48 month lease, \$2,000.00 down payment
and approved credit.



1987 MAXIMA

477-3337

4600 Highway 7
Unionville, Ont.
L3R 1M5

**MARKVILLE
NISSAN**



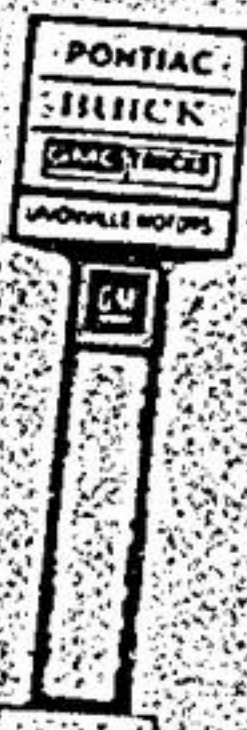
SOME VERY NICE LATE MODELS
WELL EQUIPPED

- 1985 Tempo GL 2 Dr. auto, air, sun roof, power windows/locks cassette & more. STK. X5063. 9,495.
- 1984 Crown Victoria Sedan Dark Grey w/Burgundy Trim Air, stereo etc. STK. A621A9,995.
- 1984 Crown Victoria Wagon Dark Brown, Air Stereo, very well equipped. STK. F706A9,495.
- 1984 Mustang Hatchback silver/6 cyl., auto, air, etc. STK. 6M91A. 8,995.

474-1350

MCARTHUR'S
Highway 7 between Kennedy and Warden
(Next to White Rose)

474-1350



**UNIONVILLE PONTIAC
BUICK LTD.**

"This Weeks Feature Car"
Traditional Personal Luxury, at its Finest!
1985 BUICK RIVIERA

Fully Luxury Equipped
20,500 km. Immaculate

\$20,995

477-1666

4360 Hwy. 7, Unionville

JACKSON MOTORS
PONY • EXCEL • STELLAR

347 MAIN ST. N., MARKHAM (HWY. 48)

471-4505

Also in Barrie at 126 Bradford St. 1-800-461-4306

"THE FAMILY BUSINESS THAT SERVICE BUILT"
Jackson Group Since 1927