



474-1212 640-1200

"THE GOOD WILL OF THOSE WE SERVE IS THE FOUNDATION OF OUR SUCCESS"



BRAND NEW ON 1/4 ACRE
2430 sq. ft. brick 2 storey on quiet court of executive homes. 4 bedrooms, gorgeous kitchen with walkout, separate living and dining room, main floor laundry, spacious family room with brick fireplace, whirlpool bath in master ensuite, double car garage. \$279,900.00. Call Karen Croft or Royden Croft at 474-1212.



ONLY \$129,900.00
Rural setting, over 1/2 acre lot, 3 bedrooms, upgraded kitchen, full basement, detached garage, easy commuter. Call Earl Elson or Alan Elson.



GREENPARK - STOUFFVILLE
1,890 sq. ft. brick 2 storey home. 3 large bedrooms, master with 4 piece ensuite and walk-in closet. Separate living and dining room, walkout to backyard from kitchen, main floor family room with brick fireplace, double attached garage. \$164,900.00. Call Karen Croft or Royden Croft at 474-1212.

WASHAGO
Year round home or cottage 1 1/2 storey aluminum siding, 4 bedrooms, family room with walkout to deck and a lovely view of the river, many upgrades, move-in condition. Just listed at \$69,900.00. Call Earl Elson or Alan Elson.

INVESTORS - DEVELOPERS
13 lots approximately 1/2 acre each, some ravine, draft approved, ready for spring construction. Rare find at only \$99,500.00. Call Alan Elson or Earl Elson today.



LOVELY FAMILY HOME
4 bedrooms, 2 storey, family room, 3 baths, walking distance to schools and shops. Owner transferred. Listed at \$164,900.00. Call Lynda Hughes.



BEAUTIFUL BETHESDA
Area of executive homes, artesian wells and spring fed ponds, this home is a must to see. 10 manicured acres, inground pool and small barn. The home features 4 bedrooms, 3 baths, family room with fireplace, den, deck and a gorgeous kitchen plus much more. Listed at \$450,000.00. Call now, Karen Croft.



GOOD COMMUTER
Beautiful hedged lot, duplexed living quarters, 2 bathrooms, 2 kitchens, potential as year round home or cottage use. \$59,900.00. Earl Elson or Alan Elson.



HOME - 1 ACRE - BARN
4 bedroom, 2 storey, 2 fireplaces, professionally finished rec. room, mature landscaping with many fruit trees, minutes to 404. Listed at \$199,500.00. Call Adele Gallo at 474-1212.



SHEER ELEGANCE
Custom built 2434 sq. ft. two storey, centre hall plan, 4 bedrooms, 2 1/2 baths, greenhouse kitchen overlooking farmers field, on 3/4 acre in quiet crescent with direct access to 404 for families that need "a bit of country". Reduced \$275,000.00. Call Sandra Jonnston at 474-1212.



INVESTMENT PROPERTY
30 acres with a 6 room Century home in move-in condition, large barn, stream. \$425,000.00. Ross Gallo.

JUST LISTED
3 bedroom aluminum bungalow with basement on 50' x 150' lot with deeded beach rights, living room with woodstove, large kitchen with new cupboards, large covered deck off the kitchen, garage or workshop. \$112,900.00. Call Ross Gallo.



SOUTH OF STEELES
3 bedroom brick home on quiet street, good size lot, nicely landscaped and fully fenced at rear. 3 baths, family room with fireplace, upgraded broadloom, intercom and more. \$162,900.00. Call Earl Elson.



DAIRY FARM
Near Stouffville, commuters opportunity, 98 acres, rich sandy loam, 88 workable, 77 tie ups, equipped with milk room, 2 silos, 2 grain storage bins, 4 bedroom home with 3 baths, modern kitchen. Farm in full operation. Asking only \$265,000.00. Call Bill Burd at 640-4063. Adjoining 97 acre farm used with dairy operation. 85 acres working, 3 bedroom-refurbished home, large bank barn 50' x 80'. Excellent soil. Farm credit financing arranged on both farms. Asking only \$215,000.00. Call Bill Burd at 640-4063.

INDUSTRIAL PROPERTY - MARKHAM
3 acres with 33' wide driveway on Hwy. 48 and a 2 storey building set up as offices. \$655,000.00.

8.5 ACRES
Hardwood bush, on paved road, minutes from town and the 404. Excellent parcel to build your home. \$139,900.00. Alan Elson or Earl Elson.

COMMERCIAL SPACE FOR RENT
2 suites available, 322 sq. ft., and 414 sq. ft., Main St., Markham location. \$11.00 per sq. ft. net. Ross Gallo 640-1200.

Markham/Unionville 474-1212
Stouffville 640-1200
Uxbridge/Pickering 649-2266



GERRY MEHARG LTD.



DO YOU WANT PRIVACY?
1 1/4 acres on dead end road N. of Uxbridge gives you all the privacy you need...3 bedroom spotless home...small out building...2 acres bush...riverfront. Call Kathy Clulow 640-2600, 852-6106, Res: 852-5142.



MOUNT ALBERT LANDMARK
Century church converted to 6-bedroom home, complete family room, raised dining room etc. Call Margo Greenaway. Off. 640-3131, Res. 473-2546.

ARE YOU THE LUCKY ONE?
You could be enjoying the country life in this charming 5 bedroom Dutch Colonial. Weekend activities might include horse-back riding (8 stall barn), cross country skiing (25 scenic acres), making maple syrup (5 acres hardwood bush) or just relaxing by the fireplace. This property has it all for \$289,000. Call Norma Larkin. Off. 640-3131; Res. 640-3591.

BEAVERTON EAST
Beautiful 76 acres close to Lift Locks - Tourist area. Ideal investment property. Buy now before prices go up. Call Margo Greenaway. Off. 640-3131. Res. 473-2546.



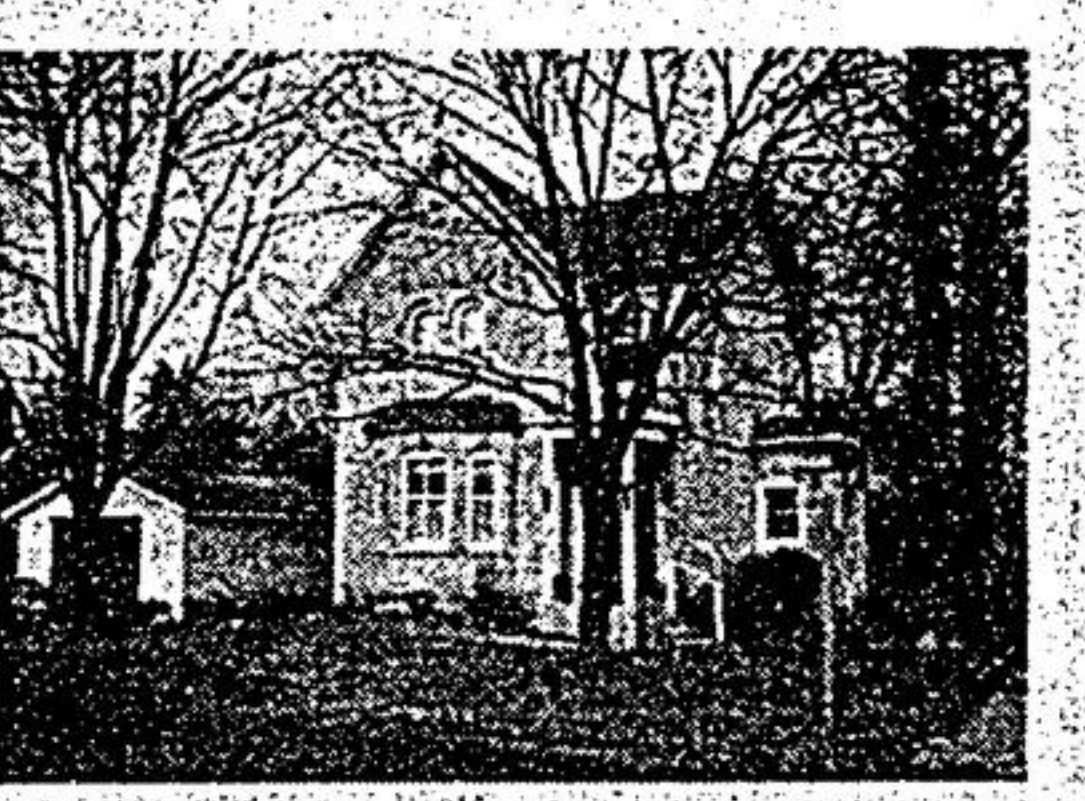
LIMITED EDITION
Classic 3-bedroom bungalow on quiet court. Double garage, master bedroom with full bath ensuite, large recreation room, + + \$165,900. Call Norma Larkin. Off. 640-3131, Res. 640-3591.

ARE YOU SATISFIED?
How can you be when a house like this is available! Large, 4 bedroom family home, professionally landscaped with a pool and deck, backing onto parkland, fireplace and finished rec. room. Compare it today. Diane Davis. Off. 640-3131, Res. 640-3587.



WHY PAY RENT?
This delightful 2 bedroom bungalow in the heart of town could be yours. Enjoy the fireplace in the living room, eat-in kitchen with walkout to extra deep backyard and cozy recreation room. \$139,000. Call Norma Larkin. Off. 640-3131. Res. 640-3591.

BUY FOR THE FUTURE
Prime 10 acres just east of Hwy. 48 on Major Mackenzie. Horse set up with indoor riding arena. Listed at \$525,000. Call for details. Brian Meharg or Betty Bangay. Off. 640-3131.



GOOD BUY!
It won't last long at \$154,900. This tastefully decorated 3 bedroom Century home in town has a new kitchen and fenced yard. Call to see it today. Diane Davis, Off. 640-3131, Res. 640-3131.

COUNTRY INCOME
100 Acre hog farm with complete grain drying system. 1 1/2 miles east of Uxbridge on Hwy. 47. 91 acres workable. Renovated 4 bedroom brick home. Good outldgs. Asking \$289,900. Call Brian Meharg. Off. 640-3131, Res. 640-3064.



260 ACRES - EAST UXBRIDGE
On Hwy. 47 over 2500' frontage, 150 ac. working, 40 ac. tile drained, stream, pond. Call Brian Meharg. Off. 640-3131, Res. 640-3064.



\$3.95 PER SQ. FT.
BEAVER CREEK/RICHMOND HILL
— New Industrial Office Building For Lease.
— Units of 3,000 sq. ft. to 5500 & up AVAILABLE.
— Truck Level and Drive in Shipping
— Exceptional Rental - January Occupancy
Vince Cairo
Len Schwartz
449-1710



JANE MCGIVERN LTD.
REAL ESTATE BROKER
FOR SALE
JANE MCGIVERN LTD.
485-7766
• RESIDENTIAL
• INDUSTRIAL
• COMMERCIAL
AND
• INVESTMENT
REAL ESTATE SERVICES
FOR INFORMATION IN YOUR AREA
CALL 485-7766