

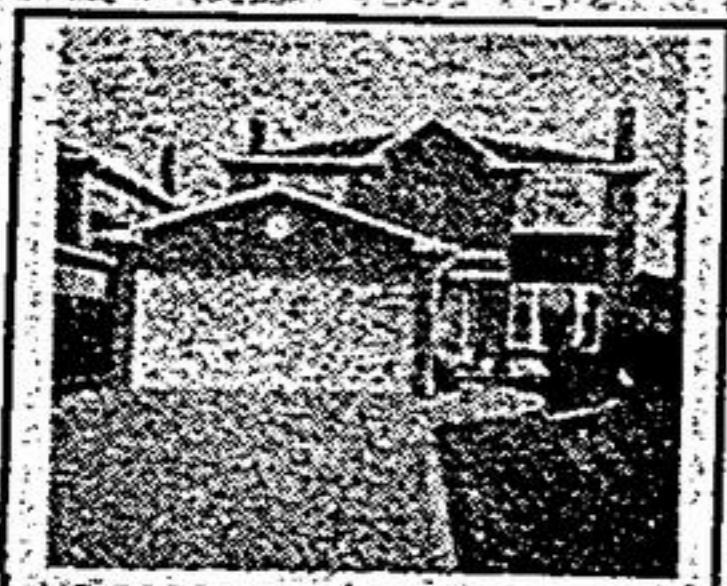
471-4800

ROYAL LePAGE

471-4800

Royal LePage Real Estate Services Ltd. Realtor

MARKHAM/UNIONVILLE/STOUFFVILLE/MILLIKEN



CUSTOM DESIGNED INTERIOR
Three skylights, 2 fireplaces, solarium off custom kitchen, inside door to garage, relax in large ensuite with separate shower & Jacuzzi tub. Numerous extras. To view call Diane Blackburn or Susan Higgins 471-4800. #969.



SUSAN HIGGINS



HOT-HOT-HOT 4 BEDROOM GREENPARK
2,000 sq. ft. \$166,666. Ceramics, hardwood floors, central air/central vac. AM/FM intercom b/i dishwasher, fridge, stove, washer, dryer, fenced, paved mn. fl. fam. fireplace. Pam Doyle, 294-0690, 471-4800 #925.



PAM DOYLE



RAVINE-RAVINE RAVINE SENSATIONAL HOME-SENSATIONAL PRICE
Custom home 1/3 acre, \$279,999. Conservation, 4 bdrm. on quiet cul-de-sac surrounded by trees. Fin. w/o basement, w/o kitchen and w/o fam. rm. to raised deck. Two fireplaces, hurry. Pam Doyle, 471-4800, 294-0690 #900.



PAM DOYLE

JUST LISTED BRAND NEW DREAM HOME!!
\$239,900
Features 4 bedrooms, main floor family rm. with fireplace, main floor laundry rm, pedestal sink in powder rm., sunken master bedroom. Call us now, Pam Doyle or Lynn Doyle, 471-4800 or 294-0690.



LYNN DOYLE



PAM DOYLE



PRETTY DOLLS HOUSE JUST FOR YOU!
Immaculate 3 bedroom finished basement with fireplace, eat-in kitchen with w/o to deck and professionally landscaped yard. Interlocking driveway and walkway. Hurry, won't last long. Call us now Pam Doyle or Lynn Doyle, 471-4800 or 294-0690.



PAM DOYLE LYNN DOYLE



OPEN HOUSE 95 DELMARK SUNDAY 2-4
Tired of tiny little lots? Looking for a place where you and your family can move right in and feel at home? Drop in on Sunday or call Rose Tomassini, 471-4800. #903.



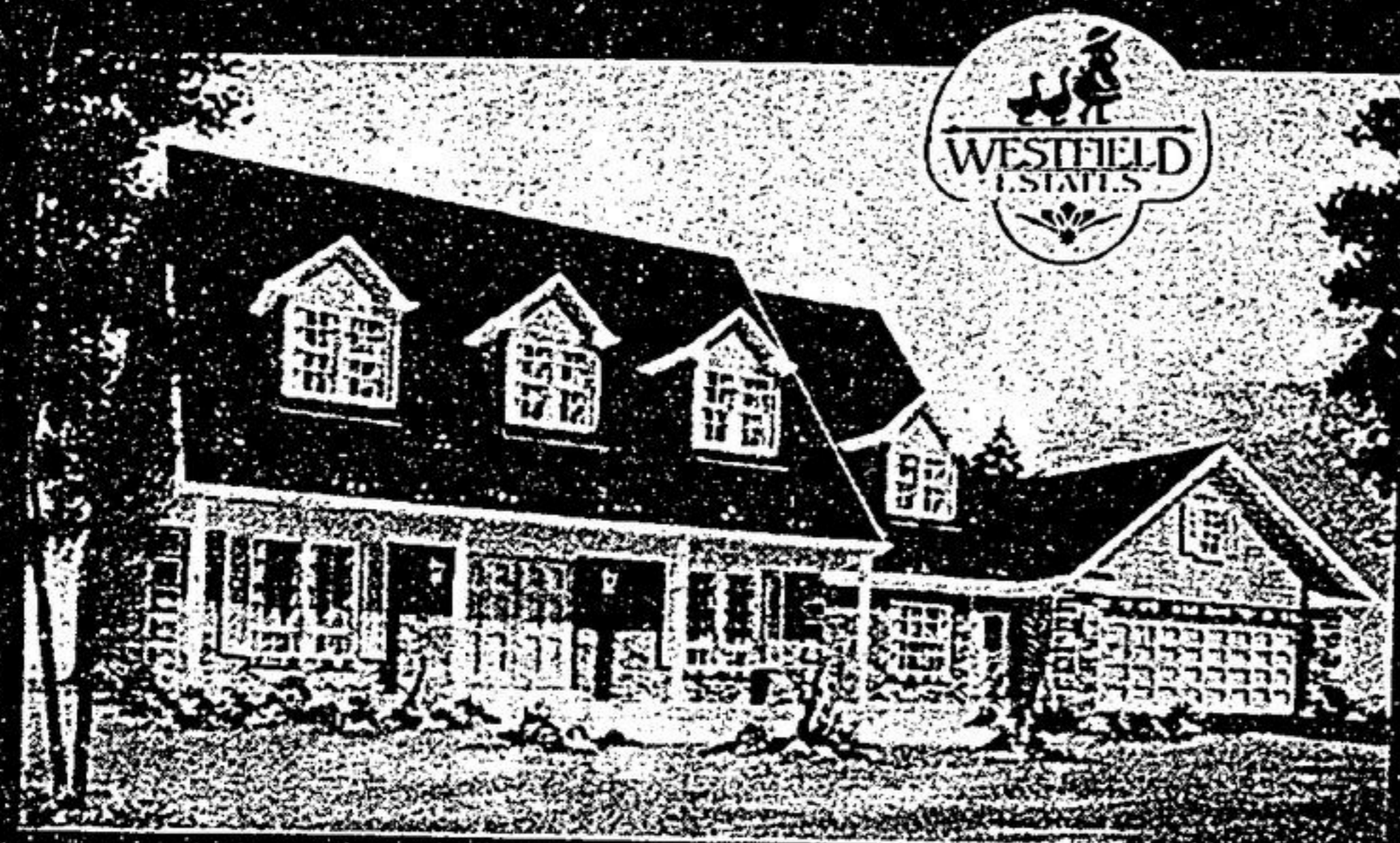
ROSE TOMASSINI

8525 McCowan
(Hwy. #7 & McCowan)
in The Royal LePage Plaza



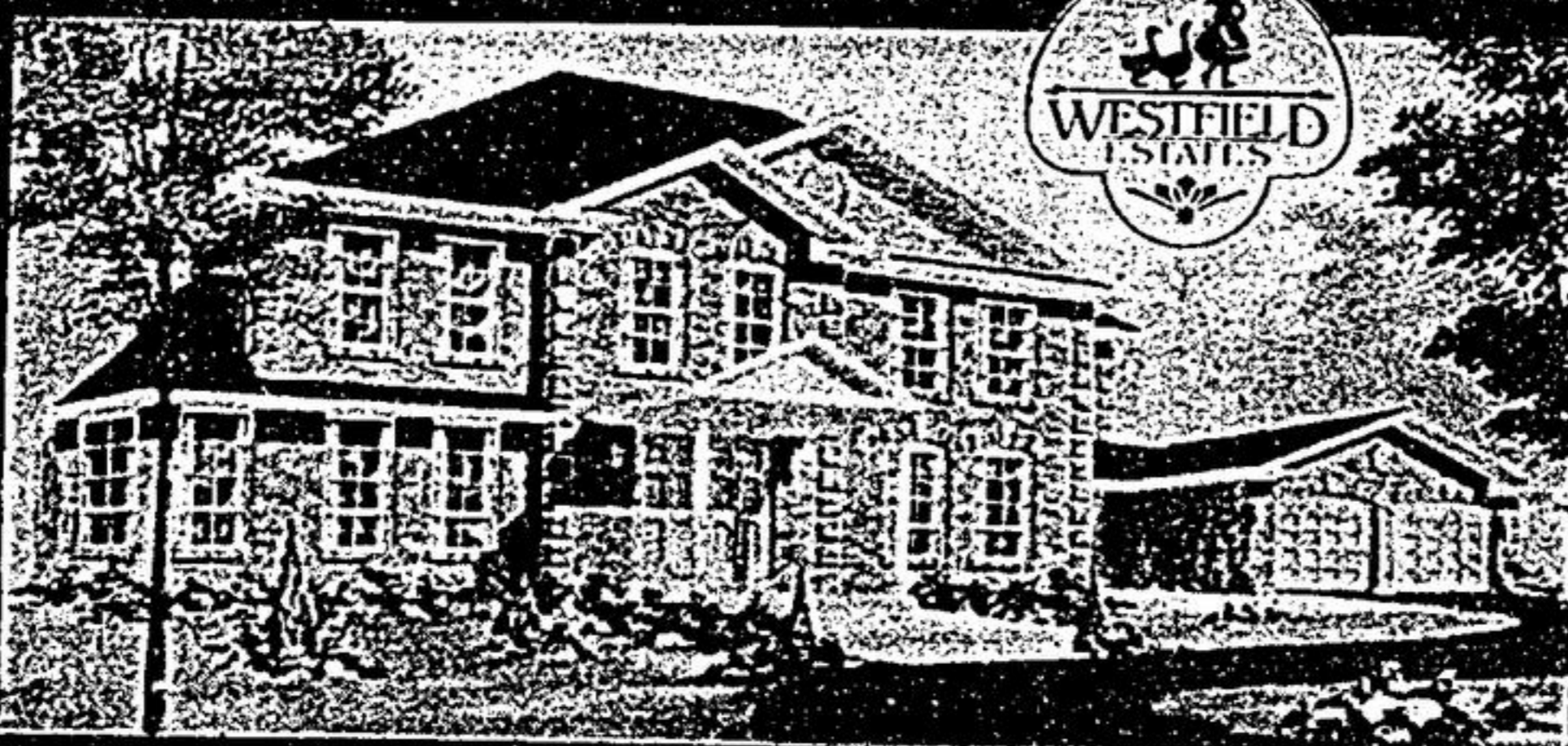
471-4800

Elegance in Stouffville



Estate lots from

3/4 acre



Occupancy Spring/Summer 1987

Prices from \$224,990 to \$286,990
From 2576 sq. ft. to 3710 sq. ft. Bungalow 2100 sq. ft.

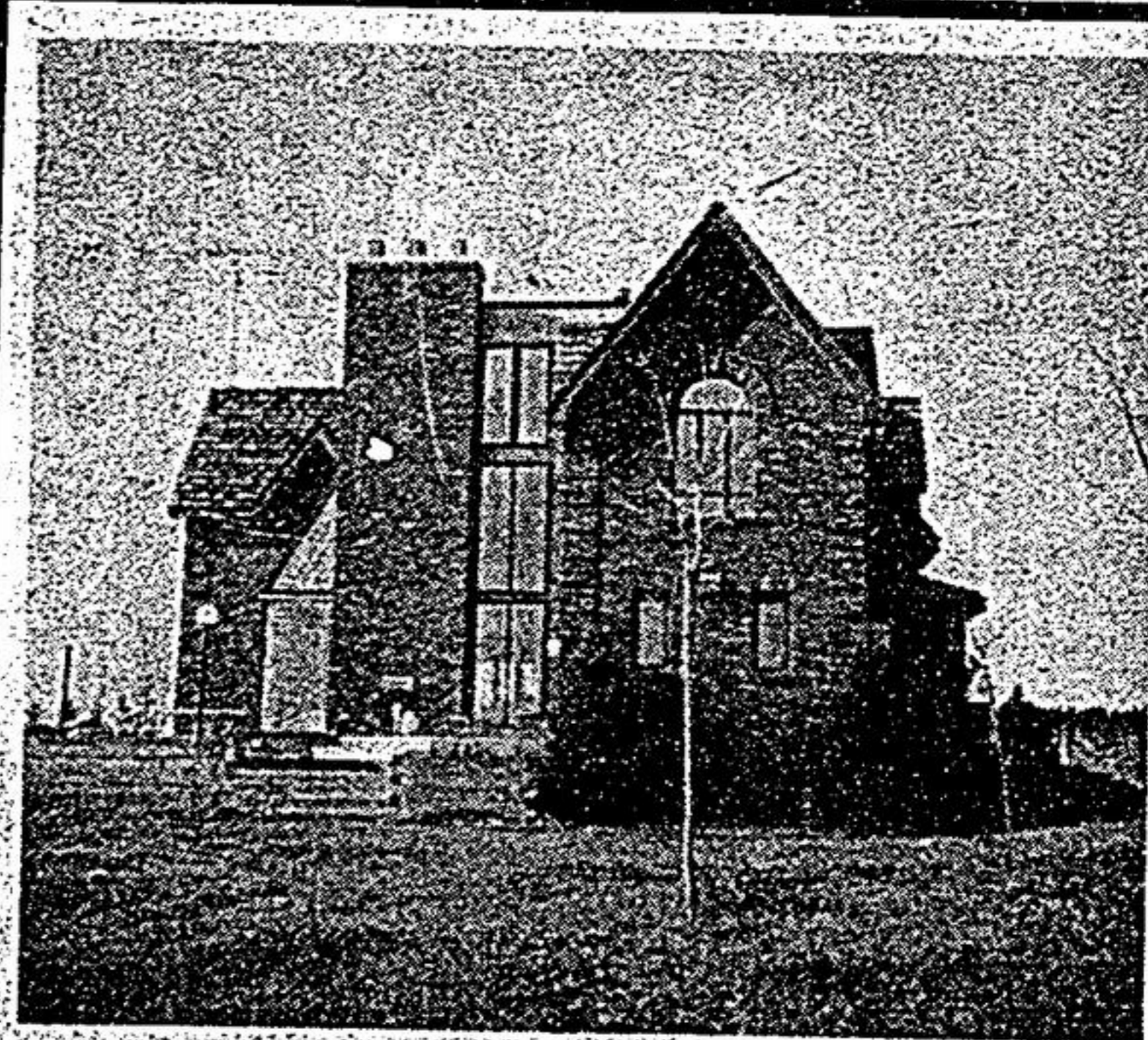
- Exceptionally designed 4 & 5 bedroom homes.
- Main floor family room with a corner wood burning fireplace.
- The powder room and laundry/mud room with a service entry is located on the main floor.
- Only 15 min. to 404
- Local Go train & Go bus service.
- Family size breakfast room in a "Greenhouse" alcove.
- Breathtaking master suite with a spacious sitting area, his & her walk-in closet, full ensuite with a step-up oval tub and separate shower.

Living in Style with
Presidential HOMES

Hwy. 47 and
Stouffville Rd.
(Just North of
Markham)
640-7071

Stouffville Rd	404
Markham Ave	401

HOURS:
Monday-Thursday 1:00 p.m. - 8:00 p.m.
Saturday & Sunday 11:00 a.m. - 6:00 p.m.
Friday - Closed
Prices Subject to change without notice.



ARCHITECTURAL MASTERPIECE
— 18 ACRES

N.E. BALLANTRAE — "IMPRESSIVE" brick 3 storey, extensive use of oak and pine, open ceilings, outstanding fireplace, solarium, spiral stairway. 5 bedrooms, 3 baths. Commanding view. List \$325,000. For the discriminating buyer. Call Lee Weldon, Tor. 640-6755/1-800-263-3288. Res. 640-2770. Re/Max Scugog Realty Limited Rltr.



LEE WELDON



Above the Crowd!

RE/MAX

Re/Max Scugog Realty Ltd.