

Economist/Tribune

showcase



KIM REESOR

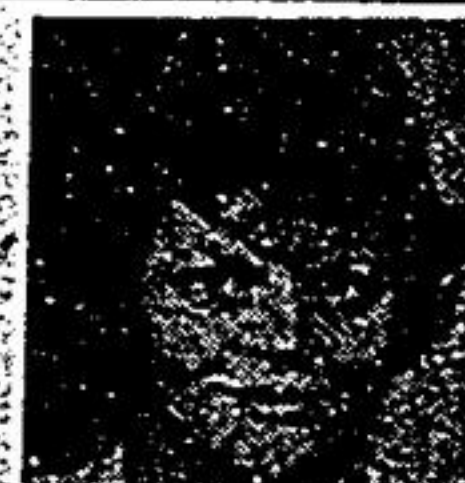


Gerry Meharg Ltd.



"HOME AWAY FROM HOME"

Quiet country 1/4 acre, manicured yard, just outside town, inground pool. Home has 2 1/2 bathrooms, finished basement, maintenance free exterior. A pleasure to show. Kim Reesor Res. 640-4138. Office 640-3131.



CONNY HIPPMANN



GERRY MEHARG LTD.



1 1/2 ACRE TREED ESTATE BUNGALOW

This quality built and spaciouly appointed spotless bungalow has a walkout and elevator. Huge bright ceramic tiled kitchen, recreation room with fireplace and walkout, 2 bathrooms. Ideal set up for inlaws. \$215,000. Frank or Conny Hippmann 640-3131 or Res. 640-1149.



KIM REESOR



Gerry Meharg Ltd.



"FAIRGATE" LARGE FAMILY HOME

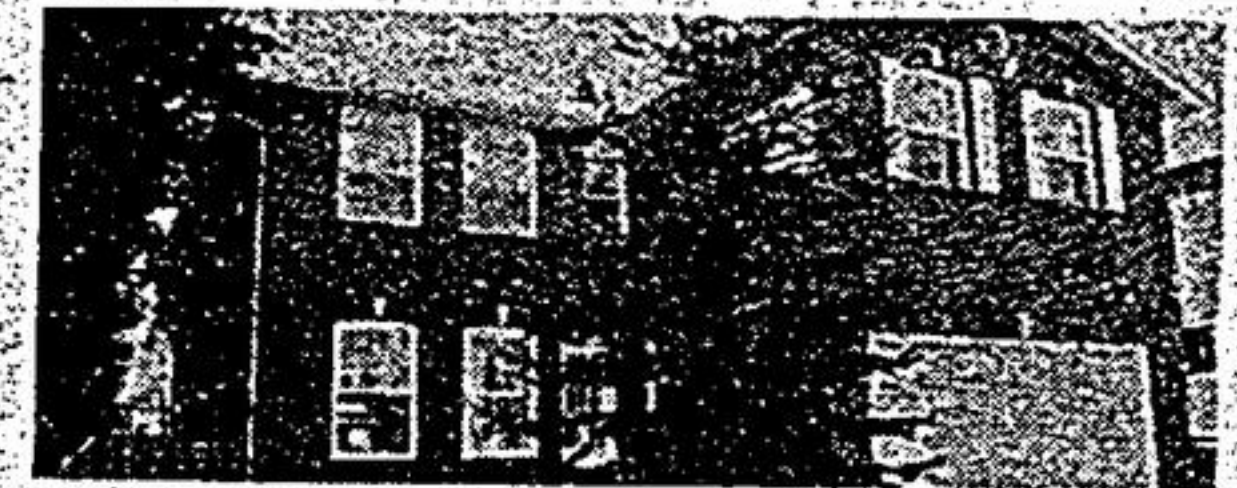
Master bedroom, ensuite, main floor family room, and laundry, fireplace. Large lot in established area. Call to inspect. Kim Reesor Res. 640-4138. Office 640-3131.



JOANNE KAY



Gerry Meharg Ltd.



**** TWO FAMILY HOME **
STOUFFVILLE \$319,000**

Quality built traditional home with contemporary lighting, 5 skylights. Two front entrances, 5 bedrooms, 4 baths, 2 kitchens, much, much more. Serviced lot on quiet dead end street. Must be seen to be appreciated. For more information call Joanne Kay, res. 640-1942, off. 640-3131.

NORTH-WEST CORNER OF HWYS. 48 & 47



640-1200



VIKKI LEDEZ

**SERIOUS PURCHASERS REQUIRE
A RANCH BUNGALOW**

2-3 bedrooms, preferably main floor family room, main floor laundry, large country lot or small acreage, up to \$200,000.00. If you are contemplating selling, please call without obligation. Vikki LeDez 640-1200.



MAIN STREET STOUFFVILLE

The charm and character of a warm and friendly town residence is apparent in this one-of-a-kind 4-bedroom home. Original wood mouldings, french doors, oak and pine flooring, bright and cheery separate dining room. This home needs to be lovingly restored and awaits your inspection. \$163,900.00.



BOB DART, DON EDWARDS, ROY McCULLOUGH, MARTY VALLEAU, JOHN WHYTALL
649-5090 640-5090



JANICE WARWICK



FAMILY TRUST CORPORATION



**OPEN HOUSE SUN, OCT. 26
2-4 P.M. 105 TILMAN CIRCLE**

Be home for Christmas in this gorgeous 3000 sq. ft. executive home! Many upgrades, French doors, main floor den, huge master bedroom w/sitting area, gourmet kitchen + + + Janice Warwick, 294-1372.



MARY ANNE MACDONALD



FAMILY TRUST CORPORATION



A GREAT START!

3 bedroom home located behind Markville Mall. Close to all amenities. Main floor family room with fireplace. Mary Anne Macdonald, 477-1270.



LAARA DELAIN



FAMILY TRUST CORPORATION



JUST LISTED - LUXURY CONDO

Beautiful luxury condo, 1888 sq. ft. Huge lr & dr with w/o to balcony. Large mb & ens., dble w/ closets. Fam. rm. with w/o & 2 parking spaces. Laara Delain, 294-1372.



LAARA DELAIN



FAMILY TRUST CORPORATION



**THE HOUSE ON THE HILL!
BEST VIEW IN TOWN**

Yes - it's special, with beautiful surroundings & gorgeous view of the downs. Charming 3 br. with cathedral ceilings, country kit. & large lr. 3 fpcls! Laara Delain, 294-1372.



FAMILY TRUST CORPORATION

LOVELY STARTER HOME

Cosy 2 bdr. Close to Lake Simcoe, pine floors, large stone fireplace, situated on large hedged lot. 50 min. from 401. \$58,900. Rita Leeking, 294-1372, ext. 267.

WATERFRONT HOME

Overlooking Canal Lake/Bolsover. An hour from Toronto. 3 bedroom, 2 bathroom, large knotty pine kitchen, angelstone fireplace in living room. Priced to sell. \$89,900. Rita Leeking, 294-1372 ext. 267.



LAARA DELAIN



FAMILY TRUST CORPORATION



SUPER BUY IN UNIONVILLE

You want a property that will appreciate? Then this is for you! Super 4 br. beauty with circular oak stairs, open to basmt. Marvellous kit. & fam. rm. Laara Delain, 294-1372.