

**WE BUILT A PROUD NEW FEELING**

**A&P** In Step with Today's Shopper

**EARLY WEEK SPECIALS**

Prices effective Monday & Tuesday, October 27th & 28th, 1986. We reserve the right to limit quantities to normal family requirements. Savings shown in this ad based on our current regular retail. We redeem all food store coupons. Some illustrations in this ad are for design only and do not necessarily represent items on sale.

**1/3 OFF**

WHITE, YELLOW OR BEIGE

**Delsey Bathroom Tissue**

PKG OF 4 ROLLS

**1.29**

JANE PARKER (made with 100% pure vegetable shortening)

**Raspberry Pie**

**1.79**

624 g size

MON. & TUES. ONLY

JANE PARKER (made with 100% pure vegetable shortening)

**Lemon Pie**

**.99**

625 g size

HALF PRICE

**1/2 PRICE**

ALLEN'S **Pure Apple Juice**

48 FL OZ TIN

**1.99**

Apple PURE UNSWEETENED

ORANGE PURE UNSWEETENED

Apple PURE UNSWEETENED

ORANGE PURE UNSWEETENED

CANADA FANCY, PRODUCT OF ONTARIO

**Spartan Apples**

**1.49**

3 lb bag

MON. & TUES. ONLY

FROZEN, BEEF, CHICKEN OR TURKEY

**Swanson Meat Pies**

**.59**

227 g pkg

HALF PRICE

Shop Early Beat the Crowd

CUT FROM CANADA'S FINEST GRADE 'A' BEEF

**Boneless Sirloin Steak**

**7.25/kg**

**3.29**

3 lb

(T-Bone or Wing 7.70/kg-3.49 lb)

**A&P** Open 'til 9 p.m. Monday, Tuesday, Wednesday & Saturday. Now Open Thurs. & Fri. 9 a.m. - 10 p.m.

8190 Bayview Avenue, Thornhill now open 24 hours Monday 9 A.M. - Saturday 9 P.M.

# Broken glass a problem

A Markham Disposal employee was severely cut this week when an innocent looking garbage bag contained loose glass protruding from the bag.

Matthew Warden needed several stitches to his shins after a sharp piece of glass cut him right to the bone on Monday.

And, it's not an isolated incident according to Brian Pearce, manager of occupational health and safety for Miller Paving which owns the disposal firm.

He regular receives reports of disposal employees being injured by careless disposal of glass or metal.

Mr. Pearce said that with more and more people renovating houses, there seems to be an upswing in the amount of glass and metal being set out for pickup.

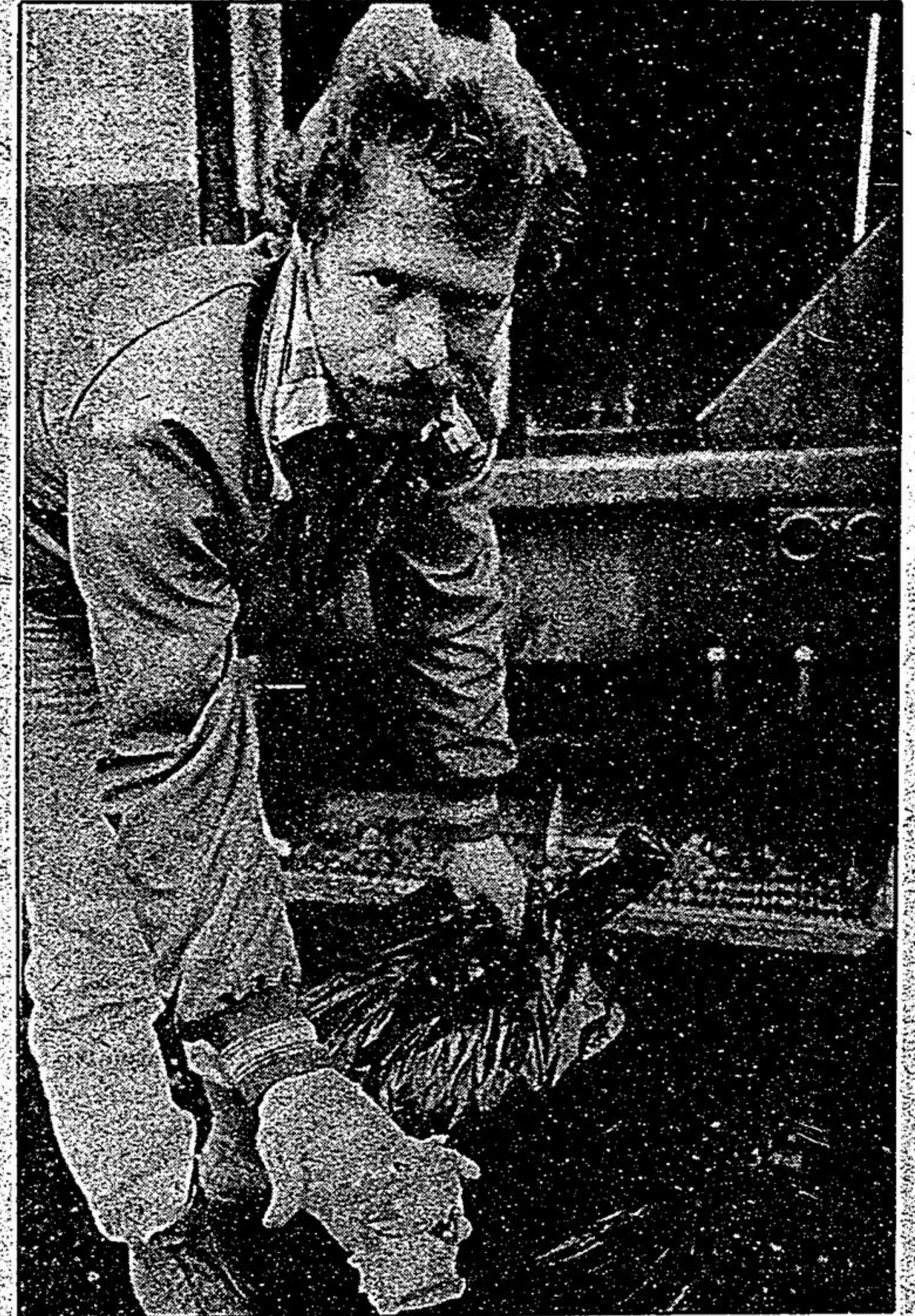
"We've had several people who have been off work for months (because of these kinds of injuries)" he said.

Broken glass and tin can lids are the biggest offenders, Mr. Pearce said. As well, bricks or steel in bags that look only partially filled can cause back injuries, he added.

He's asking Markham residents to break glass into small pieces before putting it out in the garbage. Ideally, it should be placed in a cardboard box or wrapped in newspaper so the sharp edges aren't sticking out.

Also toxic chemicals such as gasoline, motor oil and paint cans must not be set out with the regular garbage. These must be picked up separately.

For more information on special pickups call Markham Disposal at 475-6356 or the Town of Markham at 477-7000.



Markham Disposal employee Mike Lawson shows some of the shards of glass found in garbage bags during this week's pickups in the Town of Markham. — Sjoerd Witteveen

**Save 30% On All Cultured Pearl Necklaces**

**Fresh Water Pearl Necklaces**

Single Strand 6-14 kt Gold Beads 14 kt Gold Clasp	<b>39<sup>00</sup></b>
Double Strand 8-14 kt Gold Beads 14 kt Gold Clasp	<b>49<sup>00</sup></b>
Triple Strand 8-14 kt Gold Beads 14 kt Gold Clasp	<b>59<sup>00</sup></b>

**Bellair Jewellers**  
Markville S.C. - Hwy. 7 & McCowan Rd.  
Lower Level - Near Main Entrance  
**477-5712**

## Claremont carnival

Anyone interested in helping organize Claremont's third annual winter carnival is invited to attend a meeting on Thursday, Oct. 30.

The planning session begins at 8 p.m. in the community centre on Brock Rd.

Events planned during the 1987 event (Jan. 30, 31 and Feb. 1) include a parade, pancake breakfast, snow sculpture contest, beard-growing competition, bingo, hydro-pole climbing contest, cross-country ski event, snow queen contest, children's ice events, youth dance, Trappers Ball and much more.

The carnival committee is looking for people to take charge of specific events and responsibilities. More information is available from either Al Graham at 649-2604 or Glenna Yoshida at 649-3140.

## Library hosts Service show

A dramatic treat is in store for the area's theatrical community when noted actor Charles Hayter brings his one-man show to Whitchurch-Stouffville Public Library Sunday, Nov. 2.

Tickets for the 2 p.m. performance of *A Touch of Robert Service* are \$2 for adults and \$1 for senior citizens and students.

And on Saturday, Nov. 8 at 2 p.m., the library hosts Morgan the Clown and his concoction of mime, magic and puppetry. Admission is \$2 each.