

NORTH-WEST CORNER OF HWYS. 48 & 47



THE GOOD WILL OF THOSE WE SERVE IS THE FOUNDATION OF OUR SUCCESS



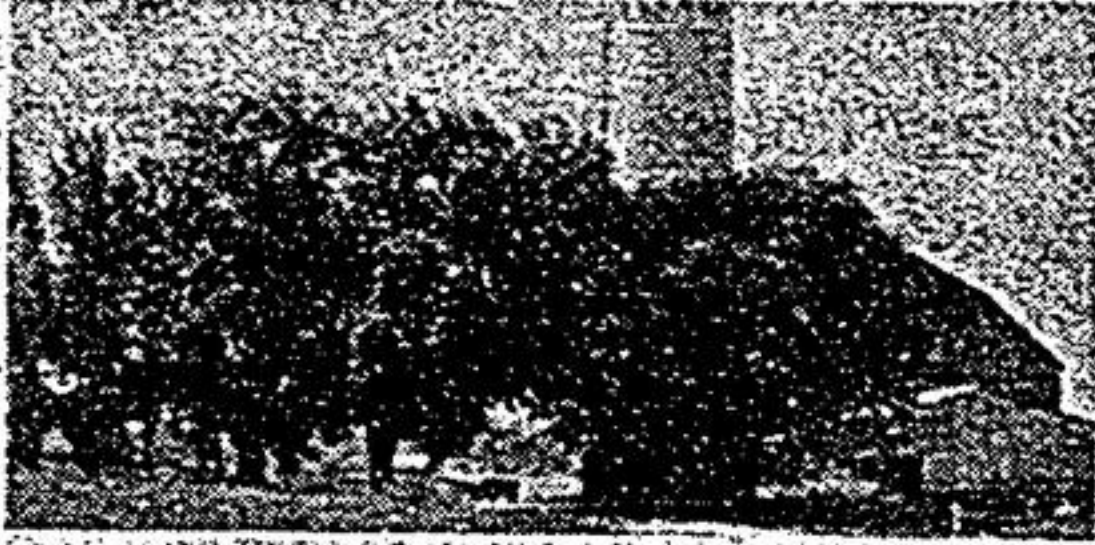
HAS IT ALL
Seclusion plus 10 acres, bush, stream, 2 ponds-1 trout stocked. Excellent commuting to 404, paved driveway, 3 bedroom open concept home with 2 fireplaces. **SOLD**
Listed at \$289,000.00. Call Vikki LeDez.



SERIOUS PURCHASERS REQUIRE A RANCH BUNGALOW
2-3 bedrooms; preferably main floor family room, main floor laundry, large country lot or small acreage, up to \$200,000.00. If you are contemplating selling, please call without obligation. Vikki LeDez.



BEAUTIFUL BETHESDA
Area of executive homes, artesian wells and spring fed ponds, this home is a must to see. 10 manicured acres; inground pool and small barn. The home features 4 bedrooms, 3 baths, family room with fireplace, den, deck and a gorgeous kitchen plus much more. Listed at \$450,000.00. Call now. Karen Croft.



SANDFORD
2 farms, side by side, total 196 acres, almost all workable, a very prosperous dairy operation. Commuters opportunity, 2 houses with 2 sets of buildings. Many extras. For more details call Bill Burd.
8.5 ACRES
3 parcels to choose from, all hardwood bush, minutes to town and the 404. Alan Elson.

\$129,000.00 — JUST LISTED
Spotless bungalow on over 1/2 acre lot with mature trees. Features oak kitchen cupboards, rec room with woodstove, dining room with walkout and detached garage. See it today with Alan Elson.

100 ACRES
Square parcel, mostly workable, 1 1/2 storey home in good condition, barn, lovely view. Call now. Sherry Hayes.
BUILD BEFORE WINTER
1/2 acre building lot with 3 level barn. Permits available. Call Earl Elson.
IDEAL GETAWAY
400 acres, trees, ponds, fully fenced. Only \$75,000.00. Call Earl Elson.

WE HAVE MANY OTHER PROPERTIES - GIVE US A CALL
Toronto line 640-1200 Uxbridge, Pickering & Ajax 649-2266



GERRY MEHARG LTD.



OPEN HOUSE — THURSDAY, OCT. 23RD — 10:30 a.m. to 1:00 p.m.

We proudly present a unique sparkling 3 bedroom bungalow with walkout. Completely finished with the best of materials and loaded with extras on 1 1/2 nicely landscaped acres. Bethesda area. \$215,000.

Call Frank or Conny Hippmann.
Off. 640-3131. Res. 640-1149.

Town 104 Main Street West
Stouffville, Ontario

Stouffville 640-2225
Uxbridge 473-2440

Living Realty Limited



SUPER LOCATION
Central Stouffville, quiet street, walk to everything, 4 bedrooms, aluminum sided with detached garage. 70' x 121' lot. Leeana Coward 640-2225, 640-1076.

I HAVE CLIENTS looking for a 3 bedroom bungalow in Stouffville. If you have such a property and are considering selling and would be interested in a free evaluation, please call LEEANA COWARD 640-2225, 640-1076.



THE TOWN AND COUNTRY SPECIALISTS



GILLESPIE
REAL ESTATE SERVICES INC.
P.O. BOX 222 CLAREMONT L0H 1E0
TORONTO 640-3336 CLAREMONT 649-3336
RESIDENCE 649-3062



CIRCA 1983
This charming reproduction features 4 bedrooms, antique brick fireplace, central vac, Pella windows, large master bedroom with walkout to balcony, 4 pc. ensuite bath and dressing room. Located on a quiet street in the Village of Claremont among compatible homes, a kidney shaped inground pool and a professionally landscaped lot round off this real estate package. Listed at \$223,500.

Call Peter Gillespie for more details
640-3336 or 649-3336



GUARDIAN

REAL ESTATE LIMITED REALTOR

PALACE (PIER)
ON THE LAKE

3100 sq. ft. Southerly exposure. All the amenities including sound management for your pleasure and convenience. Shows beautifully. Immediate possession. Call Don Barker 294-2990. Homelife Guardian R.E. Ltd. Rltr.

JANE MCGIVERN LTD.
REAL ESTATE BROKER

FOR SALE
JANE MCGIVERN LTD.
485-7766

- RESIDENTIAL
- INDUSTRIAL
- COMMERCIAL AND
- INVESTMENT REAL ESTATE SERVICES

FOR INFORMATION IN YOUR AREA

CALL 485-7766

IF YOU ARE DISCOURAGED

By the price of small waterfront lots, why not look at larger acreage in an area of numerous clean lakes. Five and seven acre parcels of well treed land for \$11,900 each. Bancroft area, on year round paved road, hydro, high, dry lots, surveyed. Call BILL LOWCOCK, Direct Toronto Line

368-9298

Irwin, Sargent & Lowes Limited



ANNOUNCEMENT



JEAN CARDOZA

Pauline Mancinci, Manager, is pleased to welcome Jean Cardoza to the Stouffville Sales Team of Family Trust Corporation. With her 16 years business experience — computer accounting related, Jean looks forward to providing sincere professional service in the real estate field to old friends and new. Jean can be reached at 640-2082 or residence 471-7066.



ANNOUNCEMENT



KEN HAND

L.Y. Betty Webber, District Manager, Family Trust Corporation is pleased to welcome Ken Hand to the Markham Sales Team. Ken has 25 years of International Sales Experience and is a well established resident in Markham. For responsibility, dedication and professional service call Ken at the Office 294-1372 or home 471-1786.

