



Above
the
Crowd!

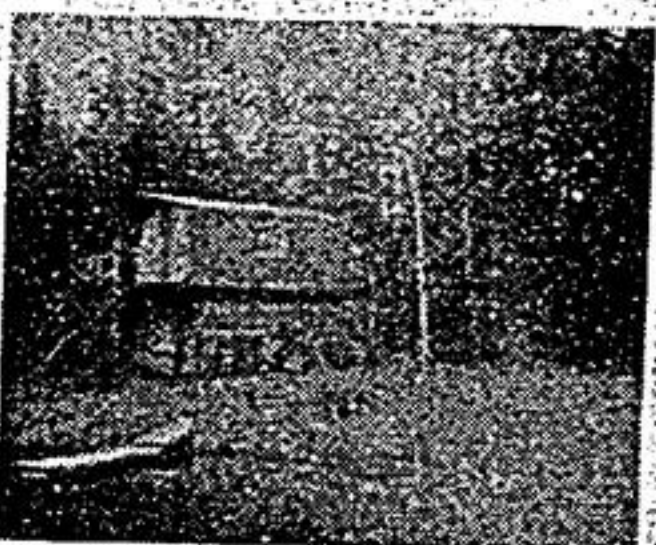
RE/MAX®

SERVING MARKHAM/UNIONVILLE
STOUFFVILLE, UXBRIDGE AND SURROUNDING AREAS.

WHY IS RE/MAX UNIQUE?

RE/MAX is revolutionizing the real estate industry. It is the only major real estate organization founded by top producers for top producers. Our methods of operation are setting the pace for a dramatically changing industry. Re/Max associates operate as independent business people. Our offices are operated much like other professional organizations such as doctors or lawyers, and that professional attitude is passed onto you.

AT RE/MAX THE SEARCH FOR EXCELLENCE IS ONGOING!



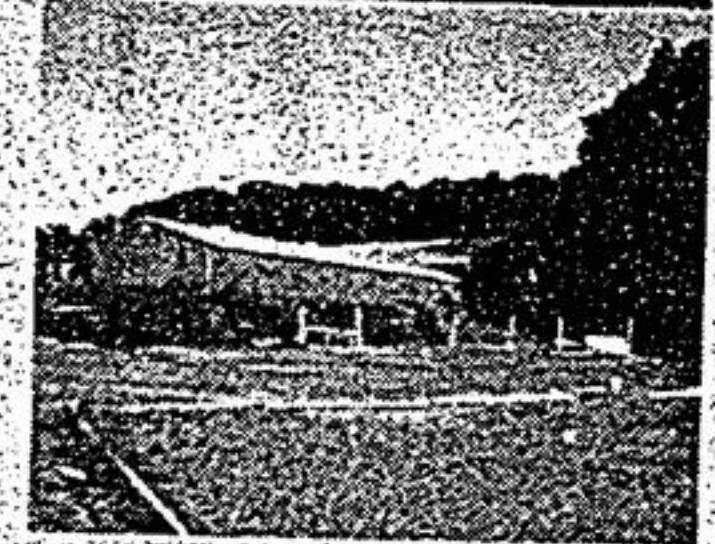
12-ACRE HIDEAWAY \$89,900
Mount Albert East. Scenic property, lovely pines, pond & charming log 2 storey. Call Lee Weldon, 640-6755/1-800-263-3288. Res. 640-2770. Re/Max Scugog Realty Limited Rltr.



BE LORD OF THE MANOR!
Parklike 3-acre setting for ornamental trees, fountains & pond. Unique Tudor home with 4 car garage, 3 fireplaces (one in master) office, solarium plus 25'x50' heated workshop. Asking \$239,000. N.W. Uxbridge. Call Lee Weldon, 640-6755/1-800-263-3288. Res. 640-2770. Re/Max Scugog Realty Limited Rltr.



A LITTLE BIT COUNTRY
Just listed at the edge of Uxbridge. 3 bedroom home on 1/4 acre tree-lined lot with privacy plus. Quality kitchen with oak cupboards & ceramic floor, walkout to deck from dining room. 1 1/2 baths. Large rec room with airtight stove plus office, plus sewing room, 2 car garage, \$134,900. Anne Powell, 640-6755 or 1-800-263-3288. Re/Max Scugog Realty Limited Rltr.



25 STALLS INDOOR ARENA
Paddocks, dressage ring. Established boarding business. Can be taken over. 3 br. home, open concept. East Stouffville. Hank DeGroot, 640-3948. Re/Max Executive Realty Inc. Rltr.



JUST REDUCED \$124,900
Inground pool, 3 decks, full basement with walkout. Hardwood floors. Cathedral ceilings, 3 bns, shows well. North Stouffville. Call Hank DeGroot, 640-3948, 640-4960. Re/Max Executive Realty Inc. Rltr.

LAND LAND LAND
40 acres, \$90,000; 55 acres with stream, 50 acres, \$100,000. 100 acres, \$199,000. Farms from \$199,000. 5 acres treed, Vivian St. Rd. \$124,900. Estate treed lots, 1 acre to 3.5 acre lots from \$100,000 to \$135,000. Close to 404. For more information on all the above, Call Len Powell, 640-4960. Re/Max Executive Realty Inc. Rltr.

STOUFFVILLE BUNGALOW \$129,900
Retirement brick home, in-law apt., walkout basement, new wiring, plumbing, washroom, huge 140 ft. deep lot. Jim Payne, 640-4960 or 640-1768. Re/Max Executive Realty Inc. Rltr.

THIS COULD BE YOUR LAST CHANCE!

One of the best homes in Stouffville. 4 bedrooms, cozy rec room. You should see the last roses of summer! Bob Newman, 294-5817, 640-4960. Re/Max Executive Realty Inc. Rltr.

FLORIDA

Financing available. Name your area. Canadian builder will find renovate and build your dream home. Lori Ruttan, 640-4960. Re/Max Executive Realty Inc. Rltr.

BUNGALOW \$98,000

Brick bungalow in Sunderland. 3 bedrooms, 2 baths, main floor laundry, eat-in kitchen with w/o. Lori Ruttan, 640-4960. Re/Max Executive Realty Inc. Rltr.

CENTURY DUPLEX

Totally renovated, 2 storey brick, new furnaces, 2 4-piece baths, new wiring, neutral decor. Lori Ruttan, 640-4960. Re/Max Executive Realty Inc. Rltr.



GARDENS ARE DONE

And the house is lovely. Two storey, three bedroom, main floor family and laundry. Two walkouts. Sandra Clark, 839-5118, 640-4960. Re/Max Executive Realty Inc. Rltr.

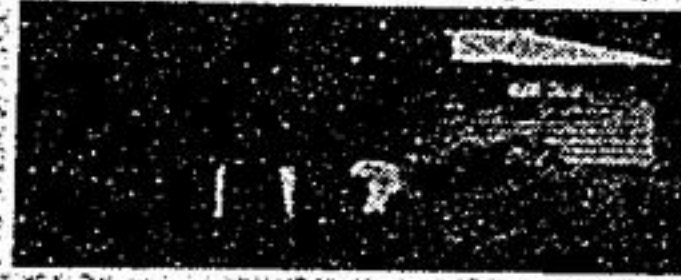


NEW CUSTOM BUNGALOW
Treed, 2 acres, exciting floor plan, 3 car garage, quality thru-out, upgrades galore. Asking \$299,000. Len Powell, 640-4960. Re/Max Executive Realty Inc. Rltr.



EASY COMMUTING

2 1/2 storey home on large lot. Original pine floors & trim. Separate lr & dr., 3 bedrooms & studio. \$197,500. Mary Jean Sider, 640-4960. Re/Max Executive Realty Inc. Rltr.



VANDORF & 404

12 1/2 acres. Trees. Stream. 4 bedroom, raised bungalow. 2 fireplaces. Very private. \$320,000. Mary Jean Sider, 640-4960. Re/Max Executive Realty Inc. Rltr.



STOUFFVILLE

Tastefully decorated, 4 bedroom home. Main flr. fam. rm., eat-in kit. Located in desirable area of town. \$162,900. Mary Jean Sider, 640-4960. Re/Max Executive Realty Inc. Rltr.

UXBRIDGE STARTER
2+1 bedroom, 1 1/2 storey aluminum home just on edge of town. 60x129 ft. lot, 1 1/2 car garage. Some appliances included. David Beare, 852-6347, 1-800-263-3288. Re/Max Scugog Realty Limited Rltr.



GORMLEY & 404

Old 11 room home on quiet street. Situated on 1/2 acre lot. Mins. to Richmond Hill. \$269,900. Mary Jean Sider, 640-4960. Re/Max Executive Realty Inc. Rltr.



DUPLEX? TRIPLEX? UXBRIDGE
R-3 Zoning. Large lot, 2500 sq. ft. residence in sound original condition. Beautiful trim, staircase & wood floors. Potential unlimited. Asking \$144,900. Call Lee Weldon 640-6755/1-800-263-3288 RES 640-2770 Re/Max scugog limited realty rltr.



COBBLER CRES.

Greenpark home, loaded with ceramics, on quiet crescent. Circular oak staircase, hardwood floors in 4 bdrms. Wet bar in family rm., central air, concrete porches front and back. Fin. basement with kitchen facilities for possible in-law apartment. Johanna Parker, 471-6600, 471-6755. Re/Max Markville Realty Ltd. Rltr.

MARKHAM/UNIONVILLE
471-6600
REMAX markville realty ltd. rltr.

STOUFFVILLE
640-4960
REMAX executive realty inc. rltr.

UXBRIDGE
640-6755 - 852-6143
REMAX scugog realty limited rltr.