



## Commercial filmed locally

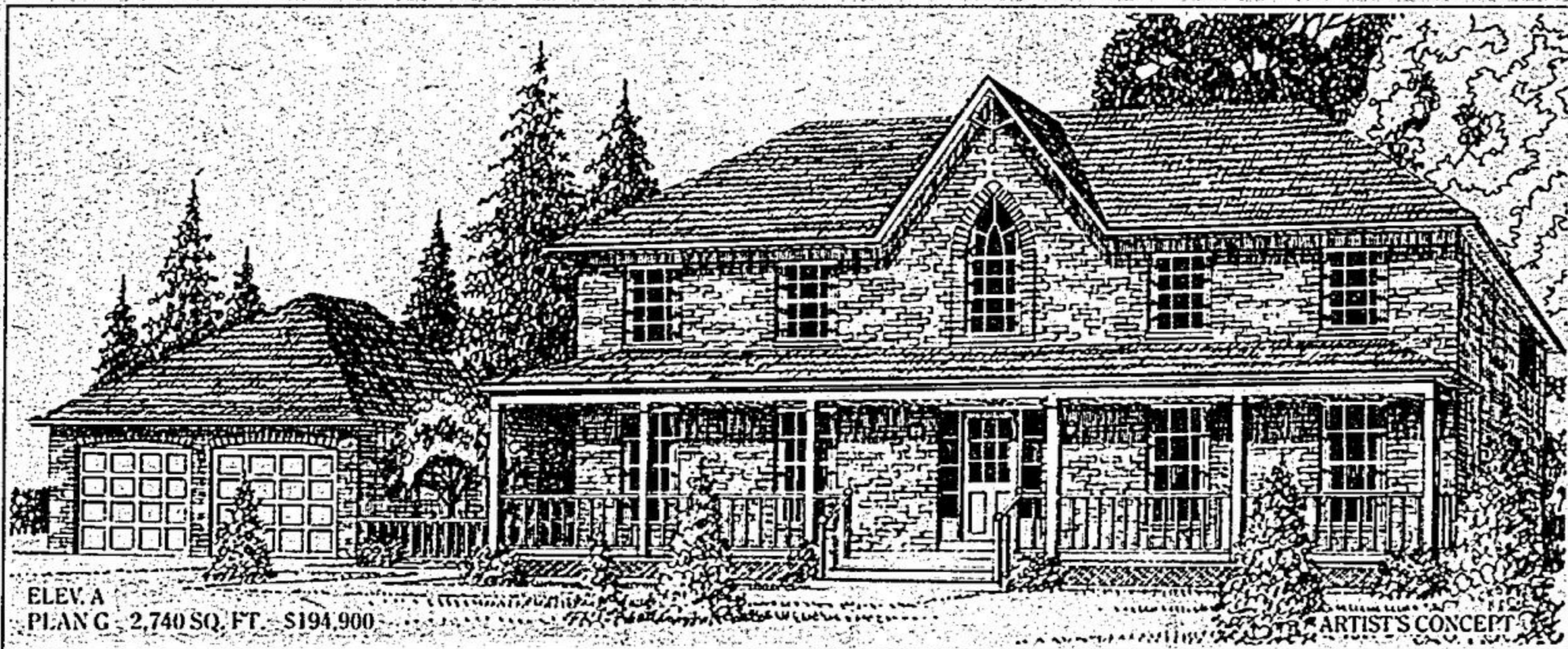
Members of the Markham Youth Soccer Club were drafted this week by a Ministry of Health and Welfare film crew for inclusion in an upcoming television commercial. Here, the group receives instructions from Assistant Director Dan Ford (with clapboard). The youngsters (left to right) are Allyson Shully, Sadi Parr, Ryan Knox, Jason Shumski, Gary Charles, Robbie McGarrigle, Alex Robinson, Missy Pfeil and Laura Kairwan. Filming was at the soccer pitch on McCowan Rd. north of Major Mackenzie Dr.

— Bill Lanning

# A COLLECTION OF HERITAGE HOMES

IN THE TOWN OF

# UXBRIDGE



ELEV. A  
PLAN G - 2,740 SQ. FT. - \$194,900

**WHEN YOU LOOK FOR A NEW HOUSE YOU WANT THE BEST FOR YOURSELF.** You want a home which meets your family's needs and also stands distinct from the others. You seek a community with a relaxed and pleasant atmosphere which you can become part of. And most of all, you look for value.

### DISCOVER QUAKER VILLAGE IN UXBRIDGE

**PAMPER YOURSELF.** Full ensuite bathrooms in the Master Bedroom. Main floor laundry rooms. Walk-out basements. Full size family rooms with fireplaces.

**RELAX YOURSELF.** Sit on an old style front porch. Have a spacious, open yard only steps away from an extensive park and pond system.

**DESIGN AT ITS BEST.** Heritage architecture in the "Old Ontario" style. Say goodbye to protruding garages and sameness in design. Appreciate authentic board and batten or all brick exteriors.

**COMMUNITY LIVING.** Uxbridge has so much to offer; schools, parks, a hospital, shopping facilities and a rare and charming ambience. And it is closer than you think! Only 30 minutes from Hwy 404 and Hwy 7. Frequent GO Bus service to and from Markham, Scarborough and downtown Toronto makes commuting easy and economical.

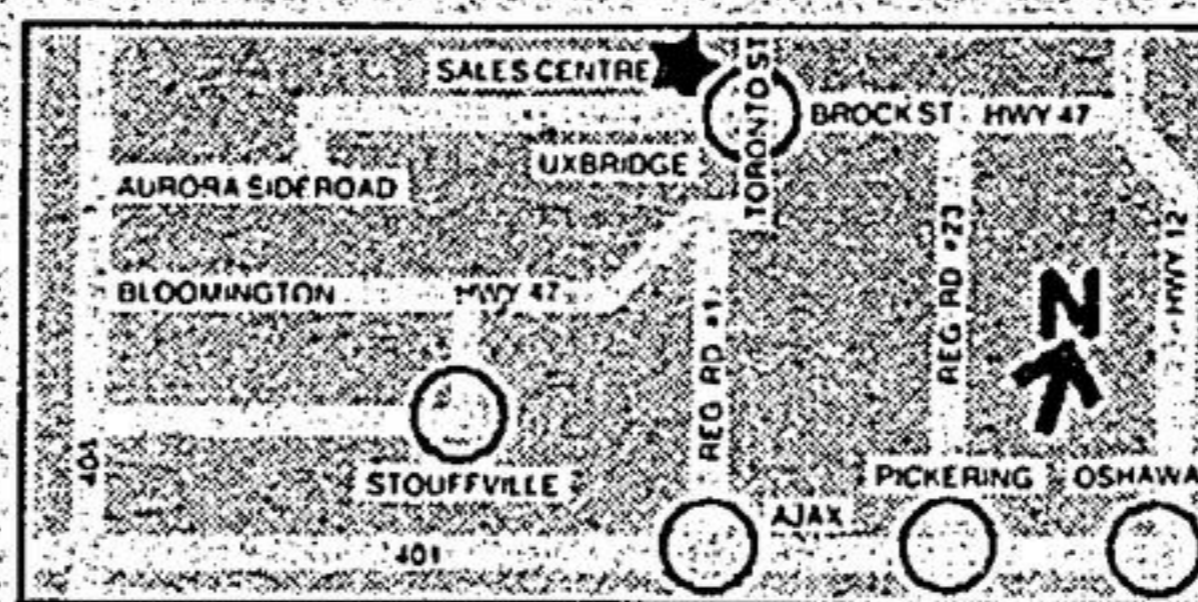
**MORE FOR LESS.** With prices ranging from \$140,900 to \$194,900 you will get more for less. Bungalow and two storey models sized from 1,750 to 2,740 square feet on lots 55 feet and up.

WE INVITE YOU TO VISIT OUR SALES CENTRE  
Monday to Friday Noon - 7 p.m.  
Saturday, Sunday and Holidays Noon - 6 p.m.

FOR INFORMATION CALL:  
852-7469 (Sales Centre)  
852-3443 (Family Trust)  
294-1372 (Family Trust - Toronto Line)  
Listed exclusively with Family Trust



THE QUAKER VILLAGE PROJECT IS BUILT BY THE FOXBRIDGE CORPORATION



**CUPPOCCINO CAFE & PIZZERIA**  
Good Food  
Good Service  
• Subs • Ice Cream  
• Pastries  
Reservations For Parties  
In the Raymerville Plaza **471-6222**

**Maples of Ballantrae**  
• Overnight Accommodations  
• De-Luxe Rooms  
• Corporate Rates  
• Meeting Rooms  
For Reservations Please Call:  
**640-4882**  
Hwy. 48 North of Stouffville

**THE MARKHAM DISTRICT HISTORICAL SOCIETY PRESENTS**

An evening of historic fashions featuring historical garments from 1790s to 1945, selected from the private collection of Mr. Jonathan Walford. Mr. Walford has been collecting for several years and will also present a slide show and commentary during the evening.

His show reflects our social past and changing ideas.  
The meeting is held at 8 p.m., Monday, October 6, in the Church on the Markham Museum Grounds located at Highway 48, just north of 16th Avenue.

Further information 294-4576 or 471-4511.

**ANTIQUE SHOW & SALE**

**markville**  
Highway 7 at McCowan Rd., Markham  
1 mile east of Unionville

**OCTOBER 8, 9, 10, 11**  
Wed. 6-9:30 p.m. Opening Night  
Thurs. & Fri. 9:30 a.m.-9:30 p.m.  
Saturday 9:30 a.m.-6 p.m.  
35 Exhibitors  
ROM Treasure I.D. Clinic  
Thurs. & Fri 6:30-8:30 p.m.  
Saturday 1-4 p.m.

**WE'RE ALREADY 40% SOLD OUT!**