

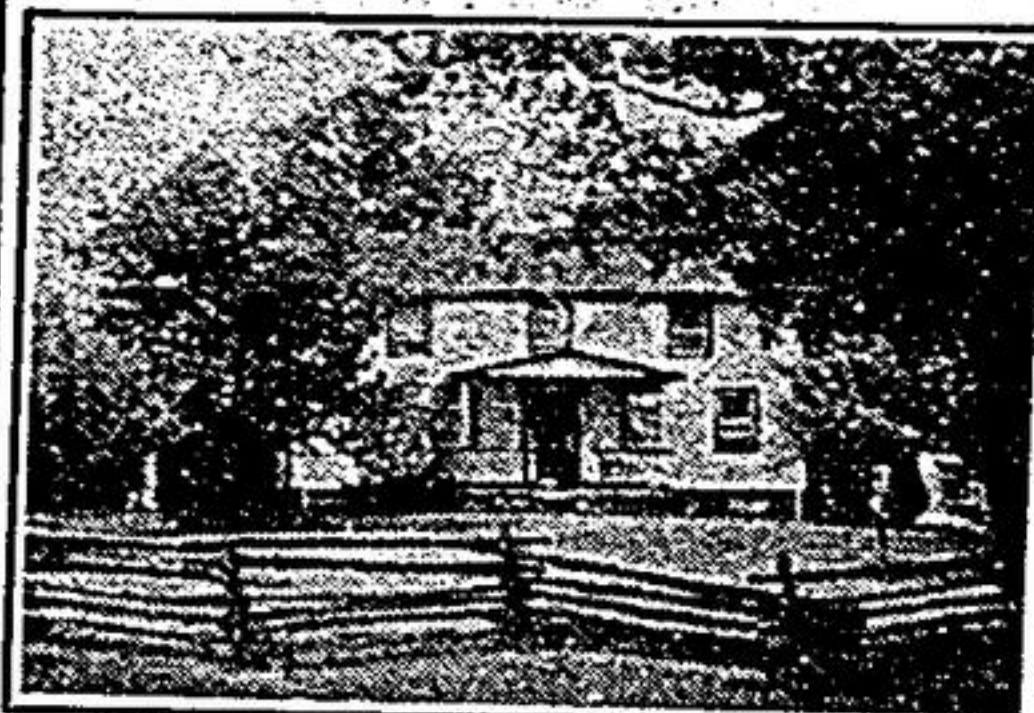
MARKHAM OFFICE

294-2533



UNIONVILLE OFFICE

477-2533



OPEN HOUSE
SUNDAY SEPT. 14 2-4 P.M.
South side 16th Ave., east of 48. Your opportunity to inspect this "early" Markham home with Jan Frisby, 294-2533. #23



JAN FRISBY



UNIONVILLE — IT'S STILL POSSIBLE
4 bedrm. with walkout basement in heart of Unionville. Close to shopping, schools and Toogood Pond. \$227,900. To view call Nancy Ethier, Dennis Cribari. #13



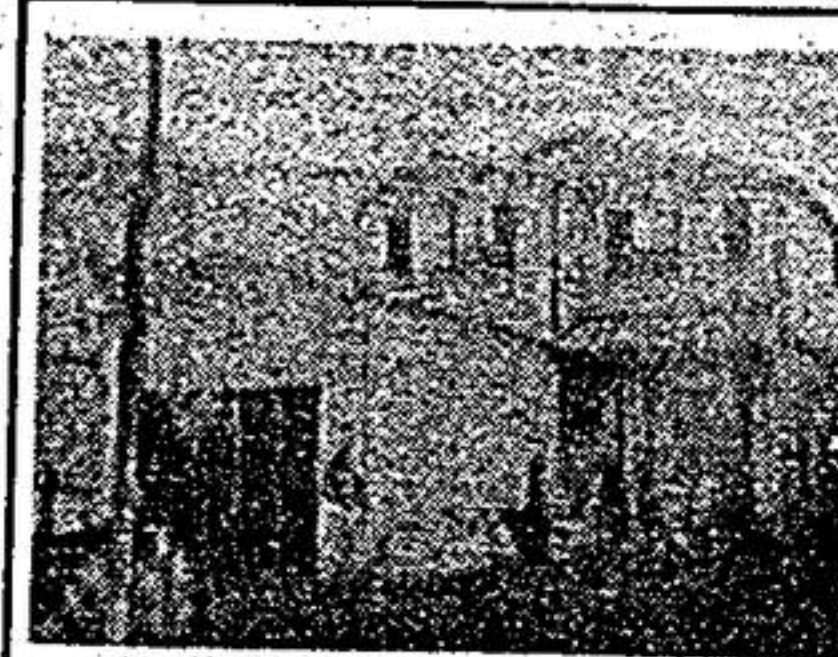
DENNIS CRIBARI NANCY ETHIER



NEW 150 YEARS AGO!
Stone home on 100 acres, spectacular view. Land is rented. Suit doctor, lawyer. Yes, it's restored. \$290,000. Call Jean Frisby 294-2533. #24



JAN FRISBY



"NEW LISTING"
3 bedrm. home located in heart of Scar. Over 1450 sq. ft., upgrades thruout, fin. basemt., professionally decorated. \$154,900. Dennis Cribari, Nancy Ethier. #15



NANCY ETHIER DENNIS CRIBARI



RETREAT + INVESTMENT + RENTAL INCOME!
Beautifully restored brick farm home on 150 acres with barns. Close to Uxbridge. \$319,000. Call Jan Frisby 294-2533. #25



JAN FRISBY



"NEW LISTING"
Close to shopping, schools & TTC. This home offers 3 bedrm., over 1350 sq. ft. with professionally fin. basemt. \$144,900. Call Dennis Cribari, Nancy Ethier. #15



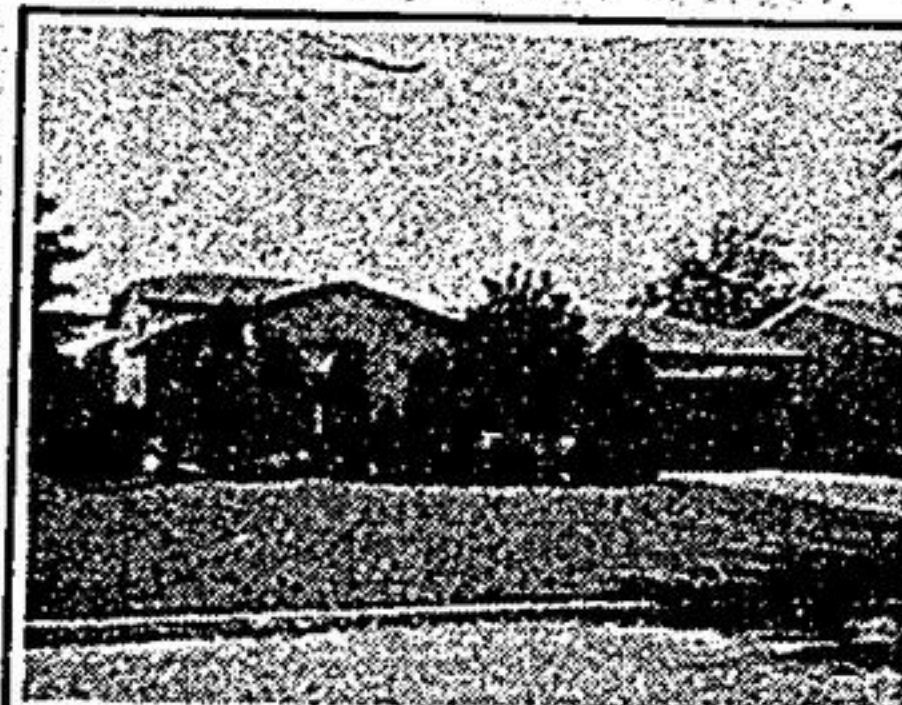
DENNIS CRIBARI NANCY ETHIER

FOR ONLY \$109,900!

Investment opportunity! 44 acres vacant land just north of Mt. Albert near Hwy. 48. \$109,900. Call today! Anna Ward 477-2533 #50



ANNA WARD



IN SEARCH OF E-X-C-E-L-L-E-N-C-E
A 4 level backsplitted with centre hall plan, large eat-in kitchen, family room & fireplace + walkout to patio. \$178,900. Sylvia Houghton 294-2533. #26



SYLVIA HOUGHTON

MARKHAM — BEAT INFLATION

Buy now — close in March! 2-storey 3 b/r, main floor family & laundry rooms, fireplace. \$141,500. Call now! Joyce Spensley 477-2533 #51



JOYCE SPENSLEY



"MADAM BENOIT" DESIGNED KITCHEN
If your wife likes a "10" kitchen, she'll love the unique design of "me". 4 bdrms., 3 baths, family & laundry. \$204,000. Sylvia Houghton 294-2533. #27



SYLVIA HOUGHTON



JUST LISTED!
Off Wooten Way. 5-4 b/r & fam. rm., 163 ft. deep lot. A real pleasure to show! \$184,900. Justin & Boots Montano 477-2533. #52



JUSTIN MONTANO



PARK YOUR J-A-G IN MY DRIVEWAY
Unionville. 1/2 acre, 1/2 acre, trees too, 3400 of luxury, grand foyer, den, family, open staircase, immed. poss. \$204,000. Sylvia Houghton 294-2533. #28



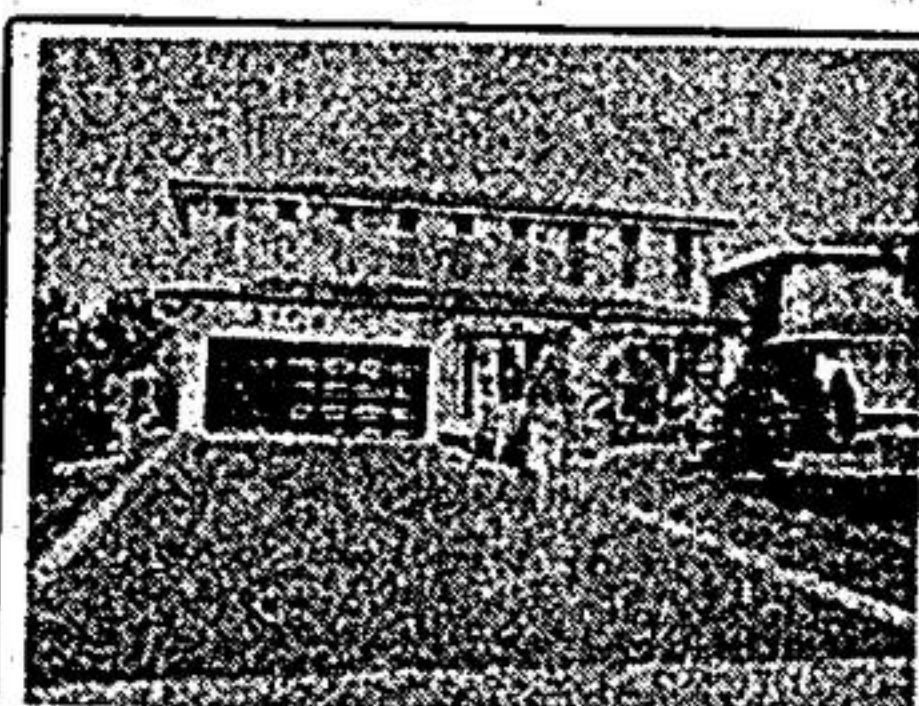
SYLVIA HOUGHTON



BRAND NEW LISTING!
Kennedy & Denison, 3 b/r & fam. rm., spotless, excellent 8% mortgage, steps to bus, park, near estate homes. \$159,900. Justin or Boots Montano 477-2533. #53



BOOTS MONTANO



CALLING ALL D-O-C-T-O-R-S
Relax in an "English country garden" beside a Betz (the best) pool, modern kitchen (a delight), ceramic flooring. A "20". \$318,000. Sylvia Houghton 294-2533. #29



SYLVIA HOUGHTON



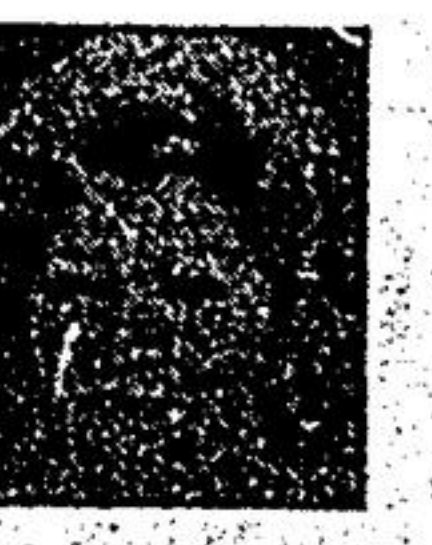
OPEN HOUSE
Where: 113 Longwater Chase, Unionville. When: Sunday, September 14th: "A Salem Eckhardt". Time: 2:00 to 4:00 p.m. 139' lot, "The Art Shoppe". \$297,000. Sylvia Houghton 294-2533. #31



SYLVIA HOUGHTON



R-O-S-E-D-A-L-E OF STOUFFVILLE
Scarlet O'Hara staircase leads to sunken liv., separate din., den & 4 bdrms., prime court, 60' lot. Mesmerizing. \$235,000. Sylvia Houghton 294-2533. #30



SYLVIA HOUGHTON