



*Above
the
Crowd!*

RE/MAX®

**SERVING MARKHAM/UNIONVILLE,
STOUFFVILLE, UXBRIDGE AND SURROUNDING AREAS.**



OPEN HOUSE
SUNDAY SEPT. 14 2-4 P.M.
Come and see Better Homes and Garden personified. Huge lot. Lots of bedrooms. Only \$159,900.00. See you! Bob Newman 294-5817, 640-4960. Re/Max Executive Realty Inc. Rltr.



WOODED RETREAT!
Trees, trees. 12 acres and stream. Bungalow nestled among them. Close to 404. 4 bdrms., 2 fireplaces, fam. rm. with walkout. Asking \$320,000. Mary Jean Sider 640-4960. Re/Max Executive Realty Inc. Rltr.

JUST LISTED
Graceful older home! 11 rms. to room. 1/2 acre lot. Main fl. fr. finished rec. rm., fireplace, kit. & solarium. \$269,900. Mary Jean Sider 640-4960. Re/Max Executive Realty Inc. Rltr.



HOME SWEET HOME
Quiet area. Overlooking lake. Just move in and enjoy this immaculate home. Large kit., main floor laundry, separate din. & liv. rm., 2 walkouts. Mary Jean Sider 640-4960. Re/Max Executive Realty Inc. Rltr.



100 X 150 LOT BUNGALOW
South of Markham. Brick home on treed lot. Excellent investment potential. Asking \$179,900. Derek Thornton 640-4960. Re/Max Executive Realty Inc. Rltr.

5 ACRES — \$74,900.
Uxbridge area, rolling, 15 acres mature trees. Call Lee Weldon 640-6755/1-800-263-3288, Res. 640-2770. Re/Max Scugog Realty Limited. Realtor.

BALLANTRAE AREA N.E. 25 ACRES "SOLD"
Excellent building site on paved road in desired area. \$98,000. Call Lee Weldon 640-6755/1-800-263-3288, Res. 640-2770. Re/Max Scugog Realty Limited. Realtor.

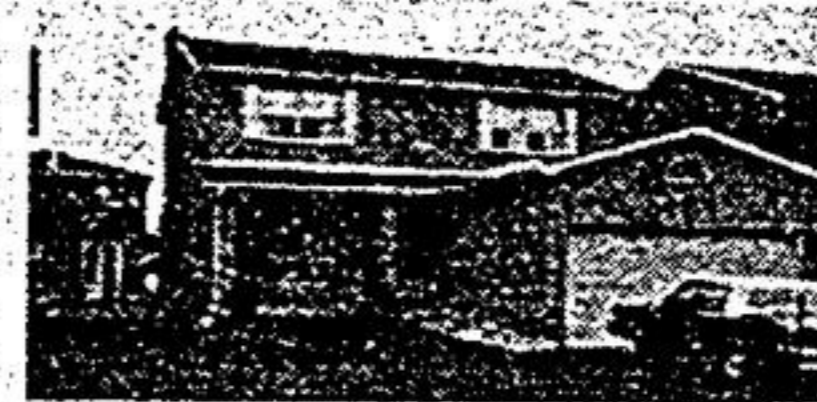


CALLING FIRST TIMERS!
Solid 4 bedroom brick bungalow, double lot. June possession means you can save more \$ down. Fresh decorating. \$119,900.00. Bob Newman 294-5817 or 640-4960. Re/Max Executive Realty Inc. Rltr.



UXBRIDGE - SPACIOUS SIDESPLIT - POOL
Pool, beautifully landscaped, 87' x 187' lot, fenced yard, lovely pool with slide & steps, 4 level home, 3 + 1 bedrooms, fireplace, family room plus rec. room. Just listed @ \$146,900.00. Call Lee Weldon 640-6755, Res. 640-2770. Re/Max Scugog Realty Limited. Realtor.

BARGAIN HUNTERS
Stop looking! Bungalow & guest house overlooking lake. A great way to pay the mortgage. \$96,500. Mary Jean Sider, 640-4960. Re/Max Executive Realty Inc. Rltr.



I'M ONLY 1 YEAR OLD!
Many upgrades in this center hall plan. Large kitchen, a Christmas fireplace in the main floor family room. \$159,900.00. Bob Newman 294-5817, 640-4960. Re/Max Executive Realty Inc. Rltr.



NEW COLONIAL STYLE BUNGALOW - \$124,900.
1/2 acre lot, 6" walls, 2 baths, plush broadloom, walkout from living room, fully drywalled basement, Uxbridge. Call Lee Weldon 640-6755/1-800-263-3288, Res. 640-2770. Re/Max Scugog Realty Limited. Realtor.

JUST LISTED - CLAREMONT
For horse lovers only. 3 b/r home, 25 stall barn, indoor arena, paddocks. High rolling land. Location! Location! \$285,000. Call Hank DeGroot 640-3948, 640-4960. Re/Max Executive Realty Inc. Rltr.



UNIQUE OLDIE
Steps from 404 to this lovely family home. Large kit., separate din. & liv. rm., finished 3rd flr. Asking \$197,500. Mary Jean Sider 640-4960. Re/Max Executive Realty Inc. Rltr.



BALLANTRAE AREA N.E. 9.5 ACRES
Immaculate custom bungalow with country charm! Features include a dream kitchen offering Jenn-air range and barbecue built in, double oven, cathedral ceiling and floor to ceiling fieldstone fireplace in spacious sunken living room, separate dining room, pine floors, multiple walkouts. A wrap-around deck overlooks pond and your own hardwood forest! 30'x47' insulated steel sided barn. Just listed at \$239,900.00. Call Lee Weldon 640-6755/1-800-263-3288, Res. 640-2770. Re/Max Scugog Realty Limited. Realtor.

MARKHAM/UNIONVILLE

471-6600

REMAX markville realty ltd. rltr.

UXBRIDGE

640-6755 - 852-6143

REMAX scugog realty limited rltr.

STOUFFVILLE

640-4960

REMAX executive realty inc. rltr.



**294-2200
640-2100**

follow
the path to

**Economist & Sun
The Tribune**