

**MARKHAM OFFICE**

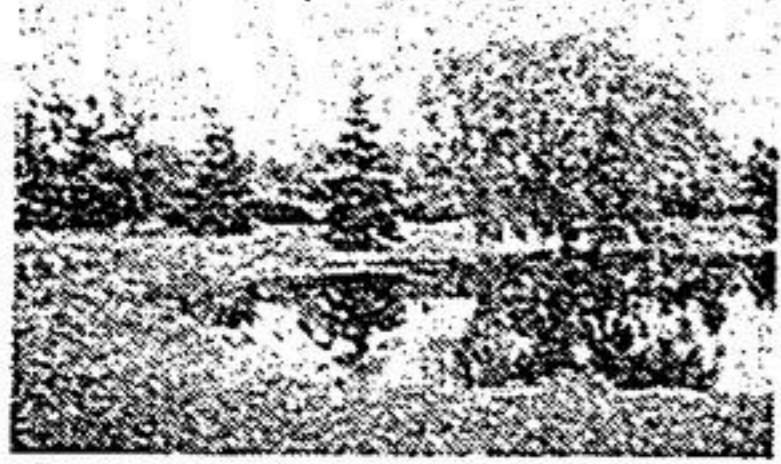
**294-2533**



**ARMOUR REAL ESTATE INC.**  
Member Broker

**UNIONVILLE OFFICE**

**477-2533**

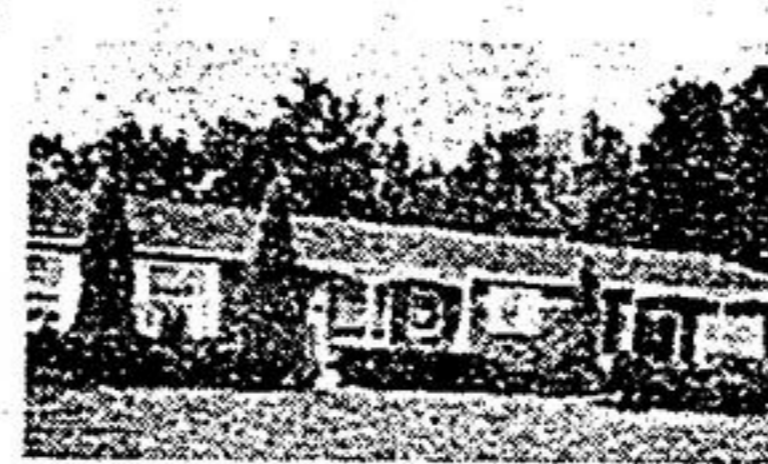


BETHESDA SIDE RD.

**BUY "LAND"**  
Avoid "congestion", 10 beautiful acres, holds a 2 storey, 4 bdrm., den, family, sun porch, Betz pool & barn. \$469,000. Sylvia Houghton 294-2533. #17.



SYLVIA HOUGHTON



NOBLE ST.

**WONDERFUL BUNGALOW**  
Noble St. - wonderful bungalow, 3 br's., fp., custom kitchen, one half acre in area of great expansion. \$219,000. Call now before this is gone - Kathy Lackie 294-2533. #18.



KATHY LACKIE



PENNY CRES.

**"PENNY" IS SPECIAL**  
We all know "Penny" is special. 4 bdrms., 3 baths, main floor family & laundry, amazing solarium kitchen (limited), 111' northwesterly exposure. A "20". \$219,000. Sylvia Houghton 294-2533. #19.



SYLVIA HOUGHTON



RAMONA BLVD.

**OPEN HOUSE**  
Open House Sun. 17th August, 2-4. 73 Ramona Blvd., Markham. "Pool". P.S. Come to the fabulous garage sale too! \$187,000. Carolyn Pannell 294-2533. #20.



CAROLYN PANSELL



1835 HERITAGE

**\*\*CAST IN STONE\*\***  
1835 Heritage stone home on 100 workable acres. Spring fed pond, fabulous home! Rarely are they this quality! \$290,000. Susan Hall 294-2533. #21.



SUSAN HALL



PUSHBUTTON FARM

**\* WE'RE GOING FARMING \***  
150 acre pushbutton farm. Restored Canadiana farm house! Excellent enterprise! Realistically priced. \$319,000. Susan Hall 294-2533. #22.



SUSAN HALL



COLSTON

**\*\* PICTURES CANT DO JUSTICE \*\***  
4.2 estate, Main St. location, 6 bdrms., 5 baths, carriage house & more, outbuildings. \$399,000. Susan Hall 294-2533. #23.



SUSAN HALL



40 MIN. FROM MARKHAM

**\*\* PARADISE FOUND \*\***  
50 acres & brand new open concept home, skylights, sunken tub & more! 40 min from Markham! \$139,900. Call Susan Hall 294-2533. #24.



SUSAN HALL



GRAVENHURST

**OWN A PIECE OF MUSKOKA**  
Licensed dining rm. on 2.3 acres prime lakefront property. Great family business. Large home, 4 cot. \$375,000. Gay LaCoursiere 294-2533. #25.



GAY LaCOURSIERE



RIDGEVALE DR.

**"BOX GROVE" ESTATES**  
Nestled among the maples on 1 acre! Custom bung. by C. Keffer. Huge country pine kit. \$329,000. Call Barbara Raffensperger 294-2533. #26.



BARBARA RAFFENSPERGER



TILMAN

**A "CLASSY" HOME**  
On a "classy" court! Shows to p-e-r-f-e-c-t-i-o-n! Spacious thruout with prof. landscaping. \$194,500. Call Barbara Raffensperger 294-2533. #27.



BARBARA RAFFENSPERGER



SOUTHDALE

**C-O-N-S-E-R-V-A-T-I-O-N**  
Limited edition, room for in-laws, too in this beautiful 4-level sidesplit, new modern kitchen, family & fireplace, trees, too!! Sylvia Houghton 294-2533. #28.



SYLVIA HOUGHTON



MICHENER CRES.

**"GREENPARK"**  
Greenpark deserves to "brag". 4 bdrms., 3 baths, main floor family & skylite, pie shaped fenced yard on "court", dream kitchen, loads of cupboards. \$178,800. Sylvia Houghton 294-2533. #29.



SYLVIA HOUGHTON

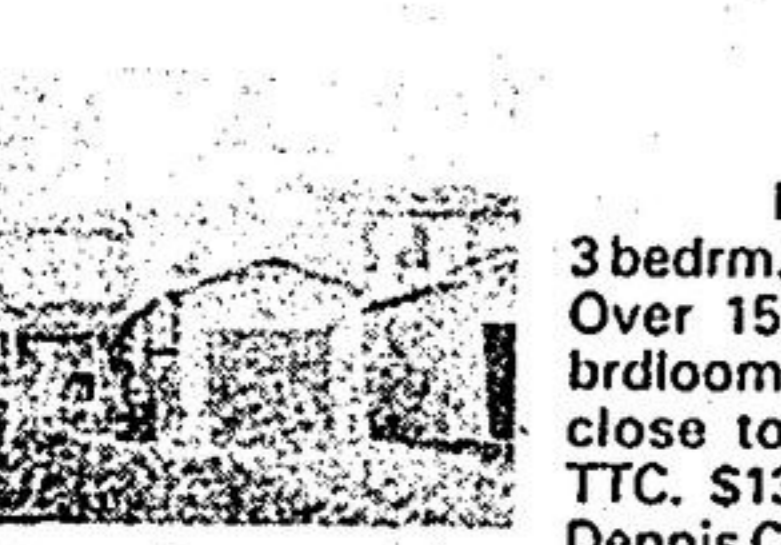


DUNBAR CRES.

**SOUTH OF UNIONVILLE**  
\$119,900. Spotless 3 bdrm., 2 baths, eat-in kitchen home south of Unionville. Have to see it to appreciate it. Call Norma Anderson 477-2533. #504.



NORMA ANDERSON

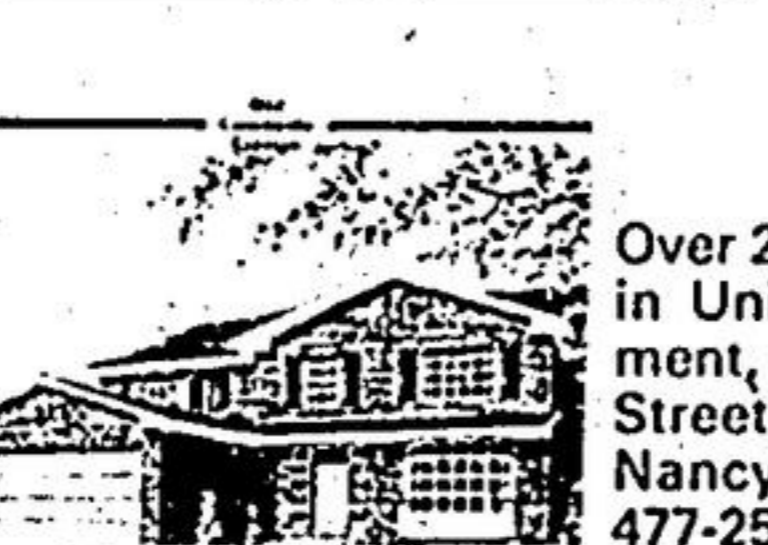


JACOB FISHER DR.

**NEW LISTING**  
3 bdrm. home in desired area. Over 1500 sq. ft. with upgr. brdroom thruout, fully fenced, close to parks, shopping & TTC. \$139,900. Nancy Ethier/Dennis Cribari 477-2533. #501.



NANCY ETHIER DENNIS CRIBARI



AITKEN CIRCLE

**NEW LISTING**  
Over 2200 sq. ft. home located in Unionville. Walkout basement, close to schools & Main Street. Won't last. \$224,900. Nancy Ethier/Dennis Cribari 477-2533. #500.



NANCY ETHIER DENNIS CRIBARI