



Prices effective Mon. August 18th & Tues. August 19th, 1986.  
We reserve the right to limit quantities to normal family requirements.  
Savings shown in this ad based on A&P current regular retail.  
Some illustrations in this ad are for design only and do not necessarily represent items on sale.

# MONDAY & TUESDAY SPECIALS

**WE REDEEM ALL FOOD STORE COUPONS**

**MOST STORES OPEN 24 HOURS**

**LOWEST PRICE THIS YEAR**

**Kraft Cheese Slices**

500 g PKG  
SAVE 1.50

**2.59**

MON. & TUES. ONLY **1/3 OFF**

**ACTION PRICES**

**1/3 OFF**

**A&P Mushrooms**

**.59**  
10 fl oz tin  
SAVE .30

**Heinz, Fancy Tomato Juice**

**.89**  
48 fl oz tin  
SAVE .60



**Maxwell House Coffee**

227 g JAR

**5.49**

LIMIT: 2 per family purchase

**MONDAY & TUESDAY ONLY**

**60% Wheat Bread**

**.59**  
450 g loaf

**Macaroon Cup Cakes**

**.99**  
pkg of 6  
(Jane Parker Raisin Pie 625 g size .99)

**LESS THAN HALF PRICE**

**Heinz Vinegar**

4 LITRE PLST JUG  
SAVE 1.90

**1.29**

**REAL VALUE MON. & TUES. ONLY**

**Loin Pork Chops**

**5.27/2.39**  
1 kg / 1 lb  
(Fresh Medium Ground Beef 3.95/kg-1.79/lb)

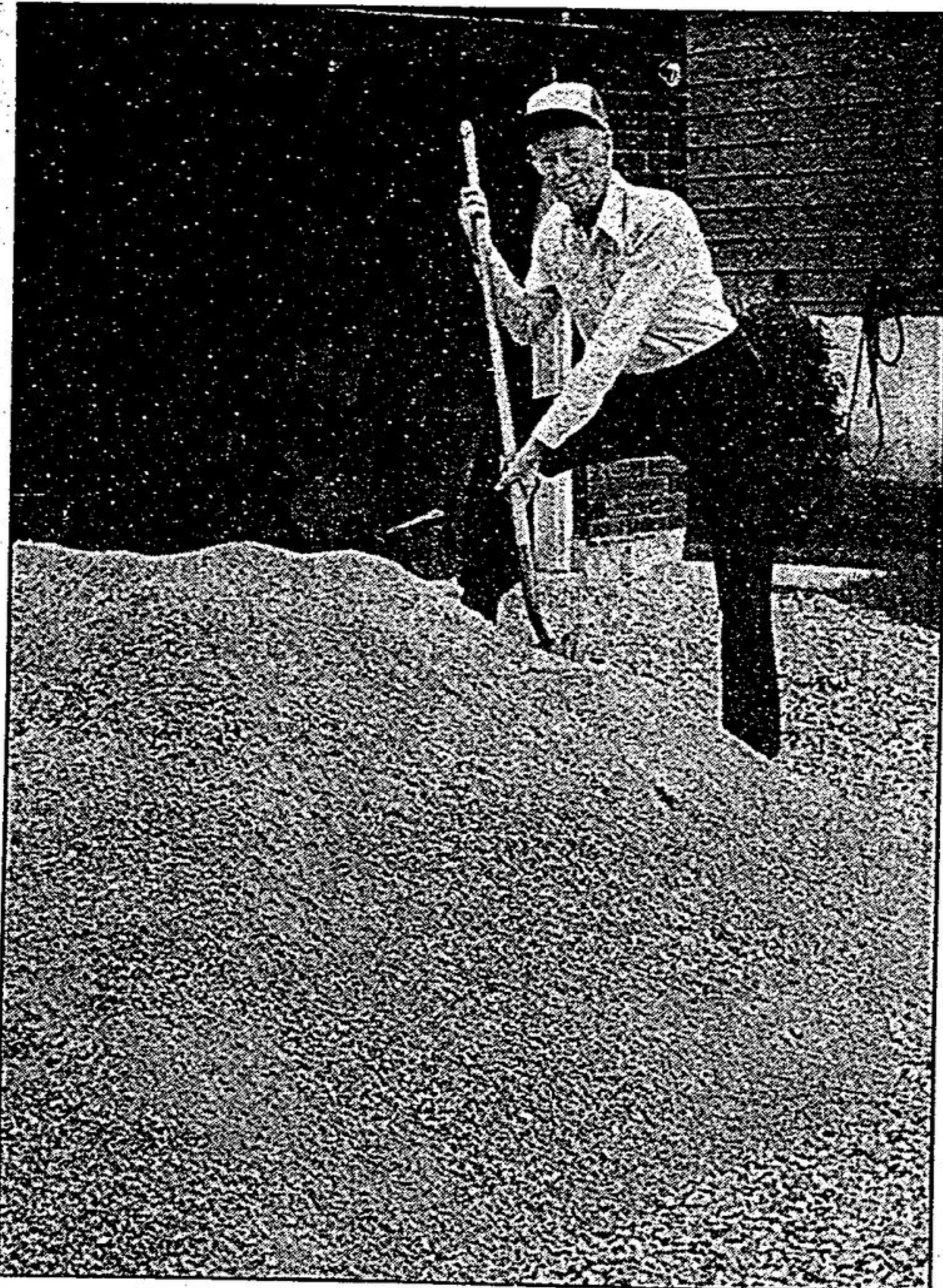
**Yellow Cooking Onions**

**.99**  
5 lb bag



Stouffville  
399 Main St. W.  
Open 'til 9 p.m. Monday thru Saturday

8190 Bayview Avenue,  
Thornhill now open 24 hours  
Monday 9 A.M.-Saturday 9 P.M.



Charles Clark of Chant Cr. in Unionville received an unsolicited load of crushed limestone Tuesday. Mr. Clark has no idea where the load came from or what to do with it.

— Greg Coates

## Thanks but no thanks

Was it a mistake, gift or prank? That was the question running through Charles Clark's mind Tuesday when he returned home to find a load of crushed limestone sitting in his driveway.

Mr. Clark, of Chant Cr. in Unionville, told The Weekender he has no idea where the stuff came from.

"All I know is that we went out for a few hours and it was there when we came back. A neighbor told me a red truck came and dumped it," he said. "I looked for an invoice in the mailbox, but there was nothing."

Mr. Clark, an insurance broker, figures the load of limestone must have been delivered to the wrong address.

"I haven't heard a thing though," he said. "It's possible that whoever was supposed to get it isn't missing it yet. I don't know."

Mr. Clark said he's going to wait a couple of weeks and will then give the prepared mixture of crushed limestone to anyone willing to pick it up. He estimates the total load to be four or five yards.

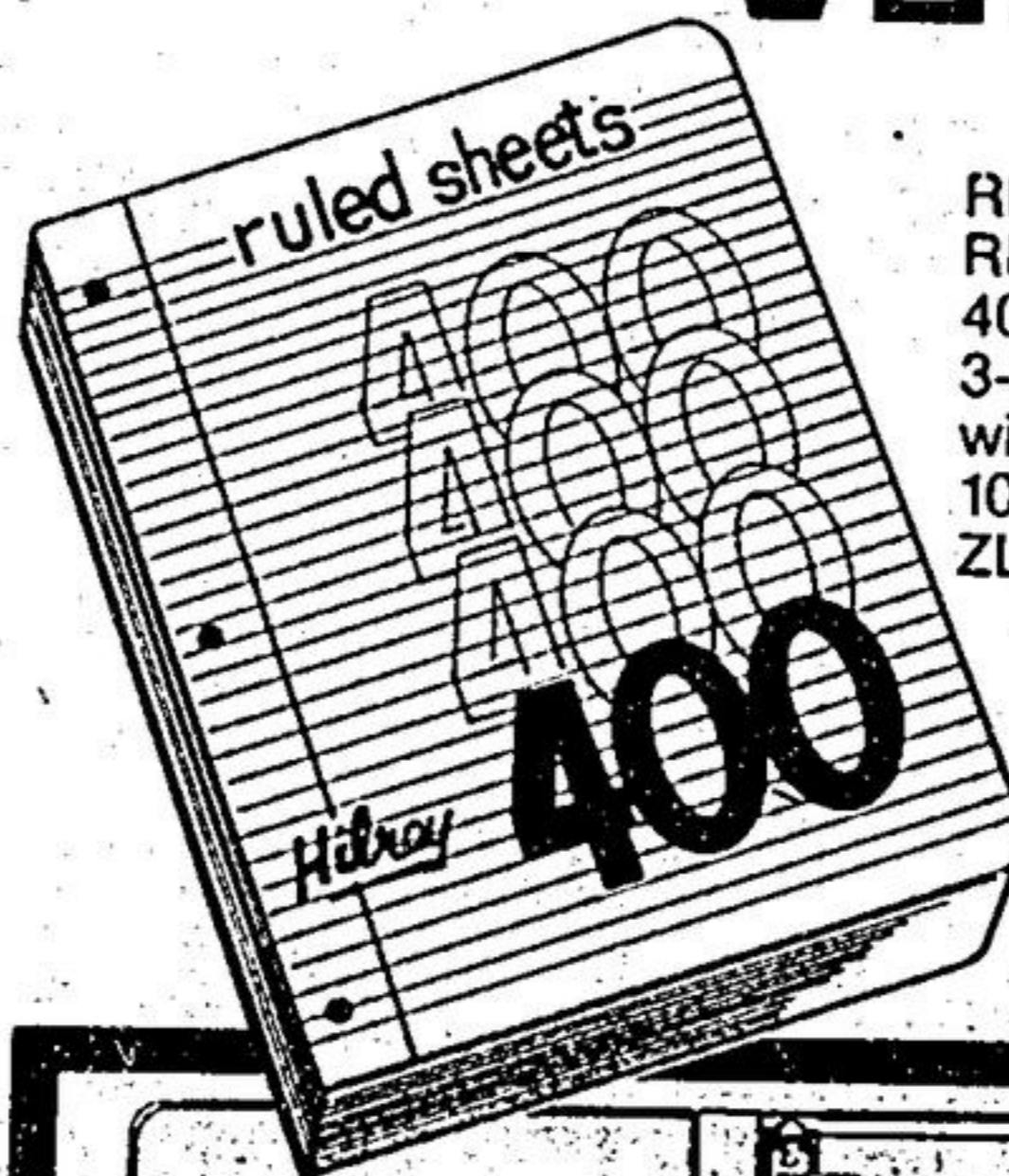
If anyone is missing a load of limestone or would like one, Mr. Clark can be reached at 477-2192.

## GRAND & TOY LIMITED

OFFICE SUPPLIES · PRINTING · BUSINESS FURNITURE

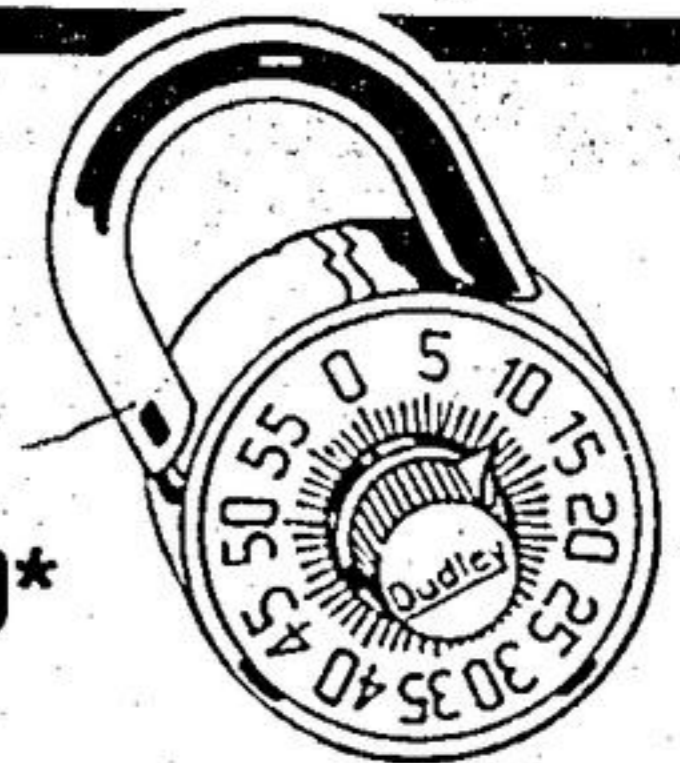
**1st choice for STUDENT VALUES**

Ask for a copy of our 12 page flyer. Many More Specials in Every Store!



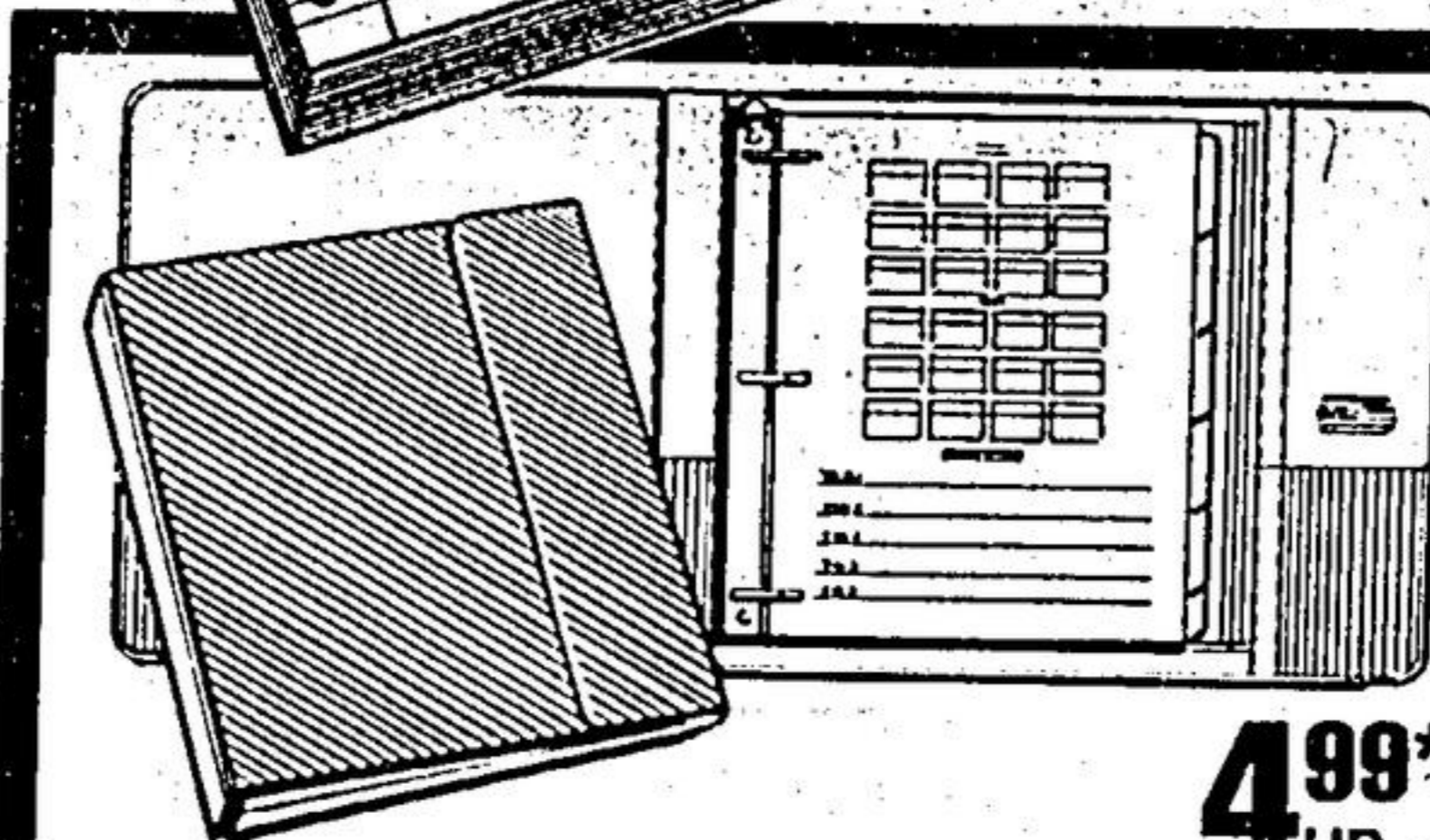
**RING BINDER REFILLS Package**  
400 sheets. Punched 3-holes. Feint ruled with margin.  
10 7/8" x 8 3/8".  
ZL43-05240

**179\***



**299\***

**DUDLEY COMBINATION LOCK**  
All metal. ZQ29-RP3  
G&T Reg ..... 5.15



**499\* UP**

**D-RING DATA PLAN BINDER**  
3-ring binder with clipboard, subject index, sheet protectors and note pad. Fold-over cover with velcro closure. Assorted colours.  
ZQ26-04810 1" capacity. G&T Reg. 7.99 ... SALE 4.99  
ZQ26-04880 1 1/2" capacity. G&T Reg. 9.99 ... SALE 6.69



**2995\***

**SHARP SCIENTIFIC CALCULATOR ZD41-EL506P**  
• With 44-scientific and statistical functions  
• 10-digit LCD, 3-key memory, full floating decimal. Comes with silver battery  
• Size: 13 x 6.9 x 1.1 cm

\*Personal Shopping Only. Prices are NET. Sale Prices End September 20, 1986.

Markville Shopping Centre  
Lower Level - West Wing

**477-6660**