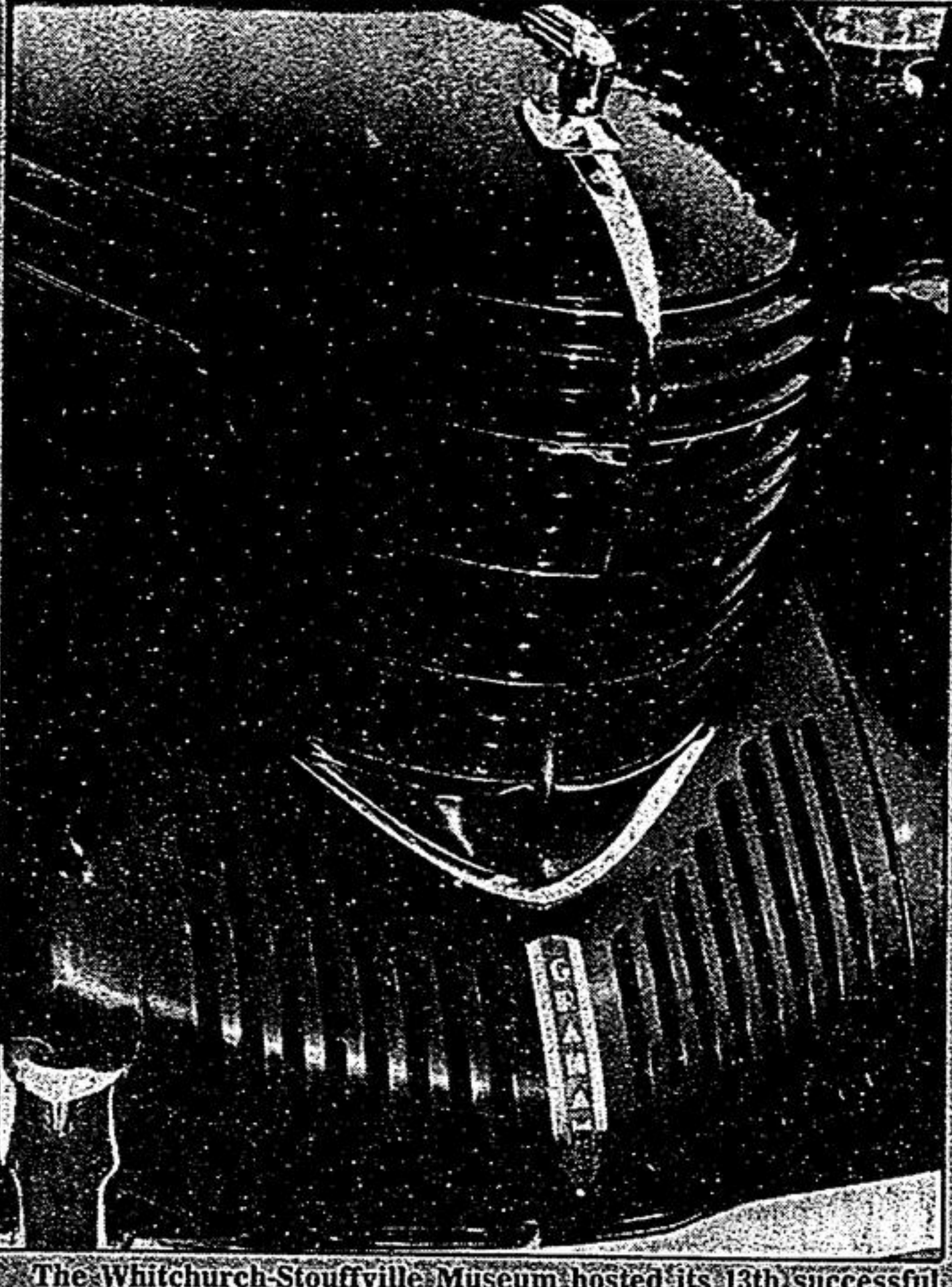


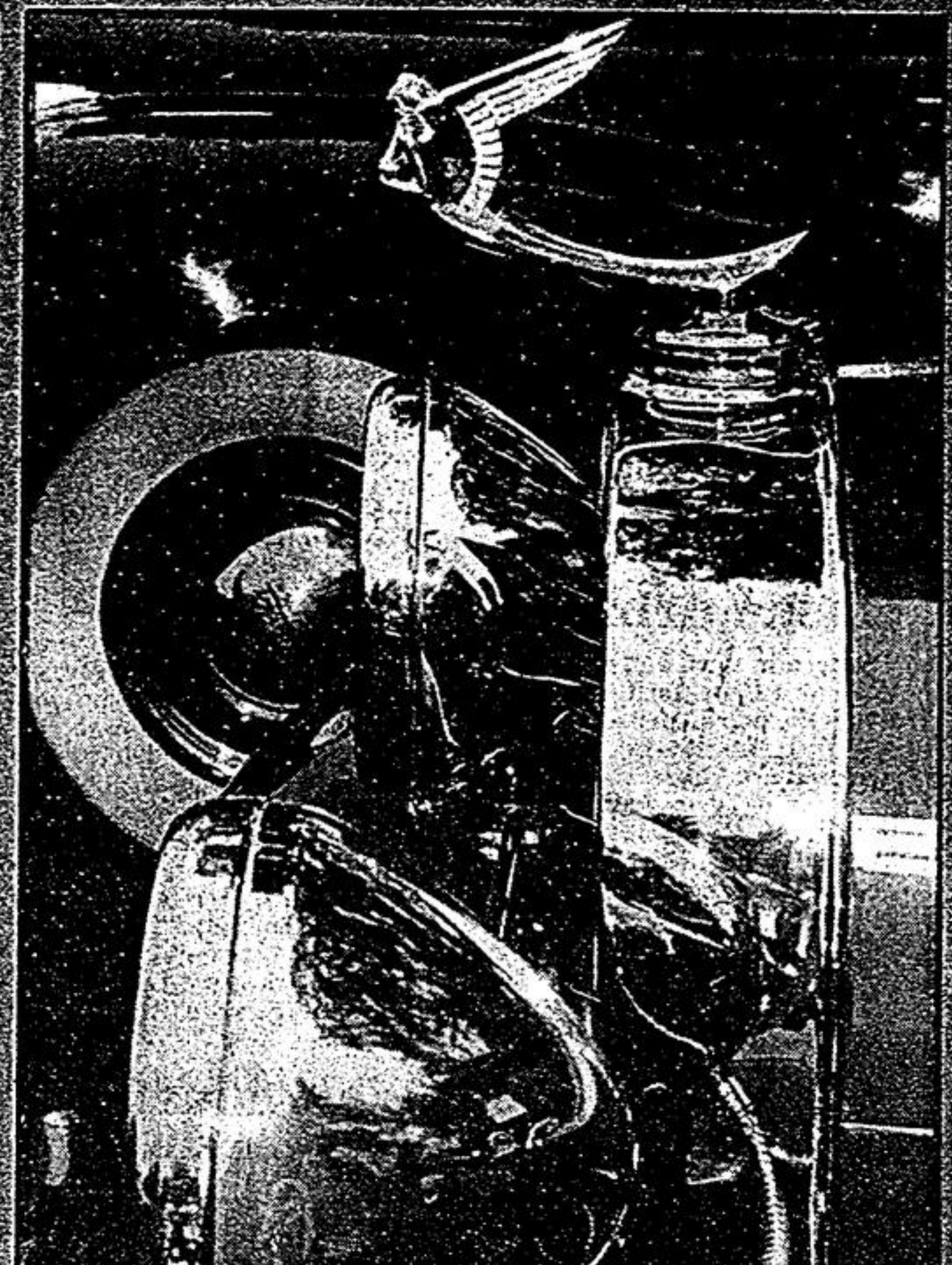
Car show turns back the clock



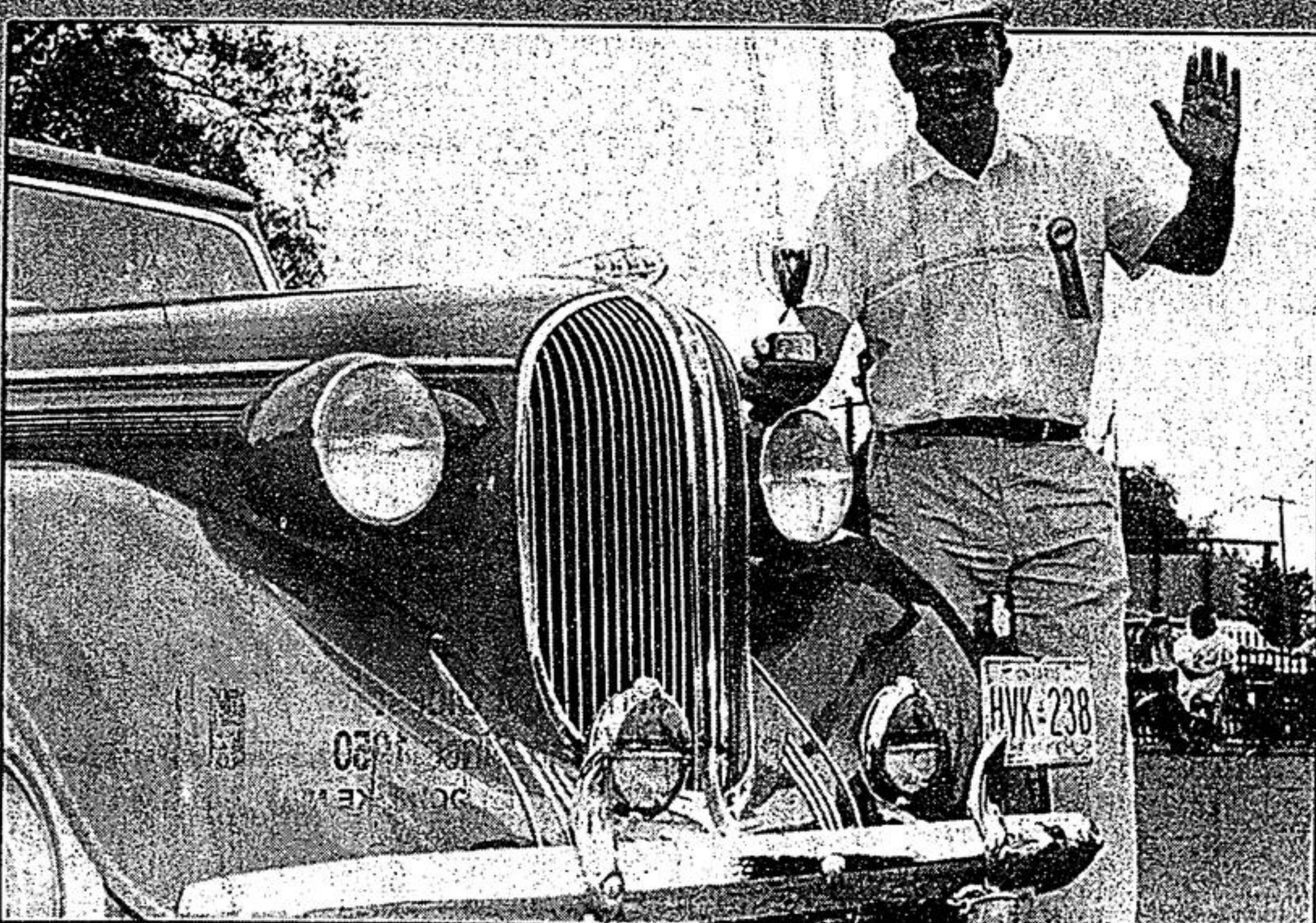
The Whitchurch-Stouffville Museum hosted its 13th successful Antique and Classic Car Show Sunday, with 110 vehicles on display including this 1938 Graham "Sharknose" sedan, owned by the Carpenter Family of Sutton.



This beautiful 1930 Model A Ford is owned by Leo and Sherry Knight of R.R. 2, Claremont. They've had it four years.



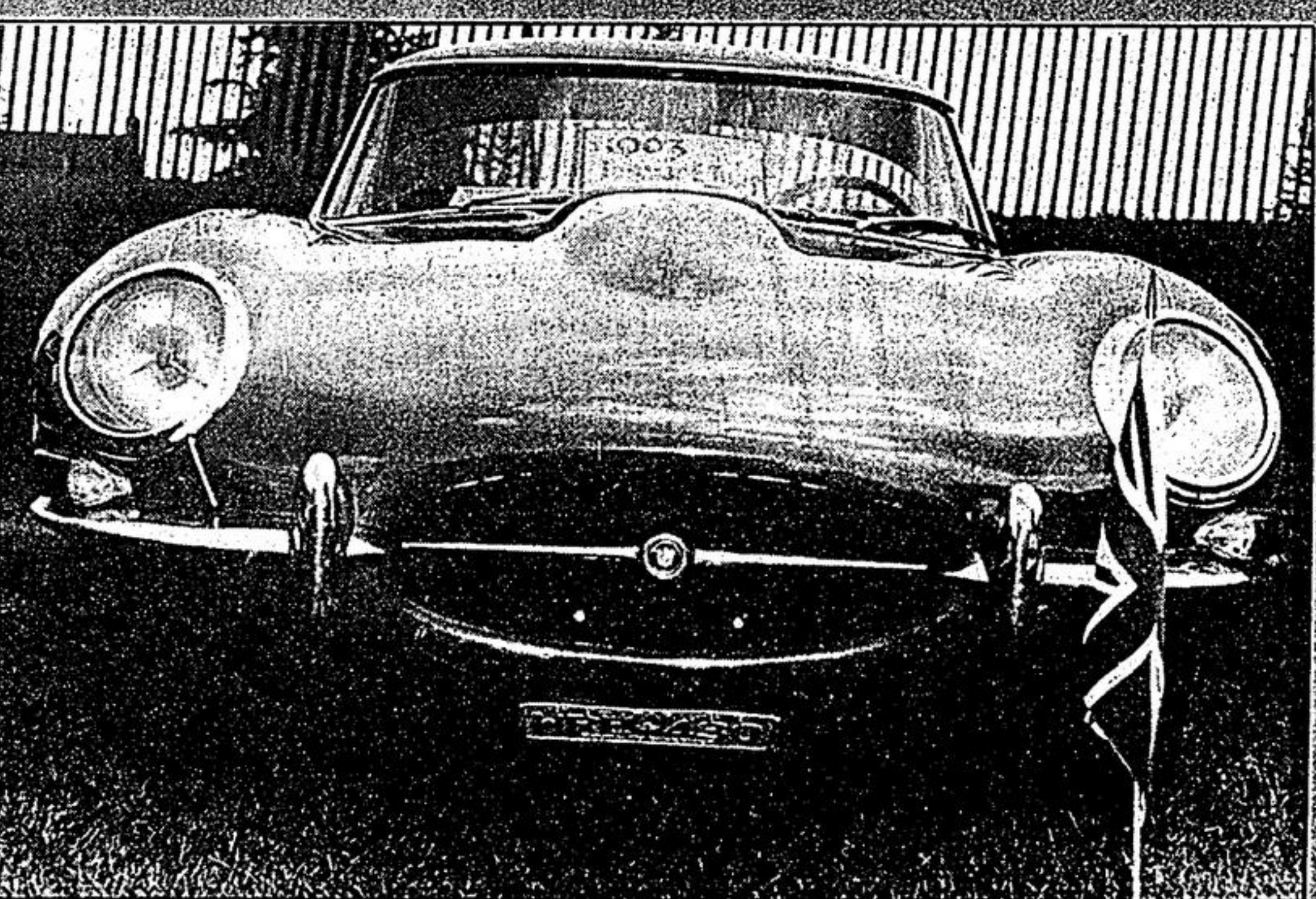
Polished chrome headlight, radiator, and hood ornament belong to an Essex Super Six owned by Hayden Giddings of Richmond Hill.



The drivers' choice of "Best In Show" was awarded this 1938 Plymouth convertible owned by David and Margaret Allen of 6 Meadow Heights Court, Thornhill.



Herb Tustin, Brock Street North, Uxbridge, cranks up his 1921 Ford Model T pickup while daughter, Elaine, 15, in appropriate dress, looks on.

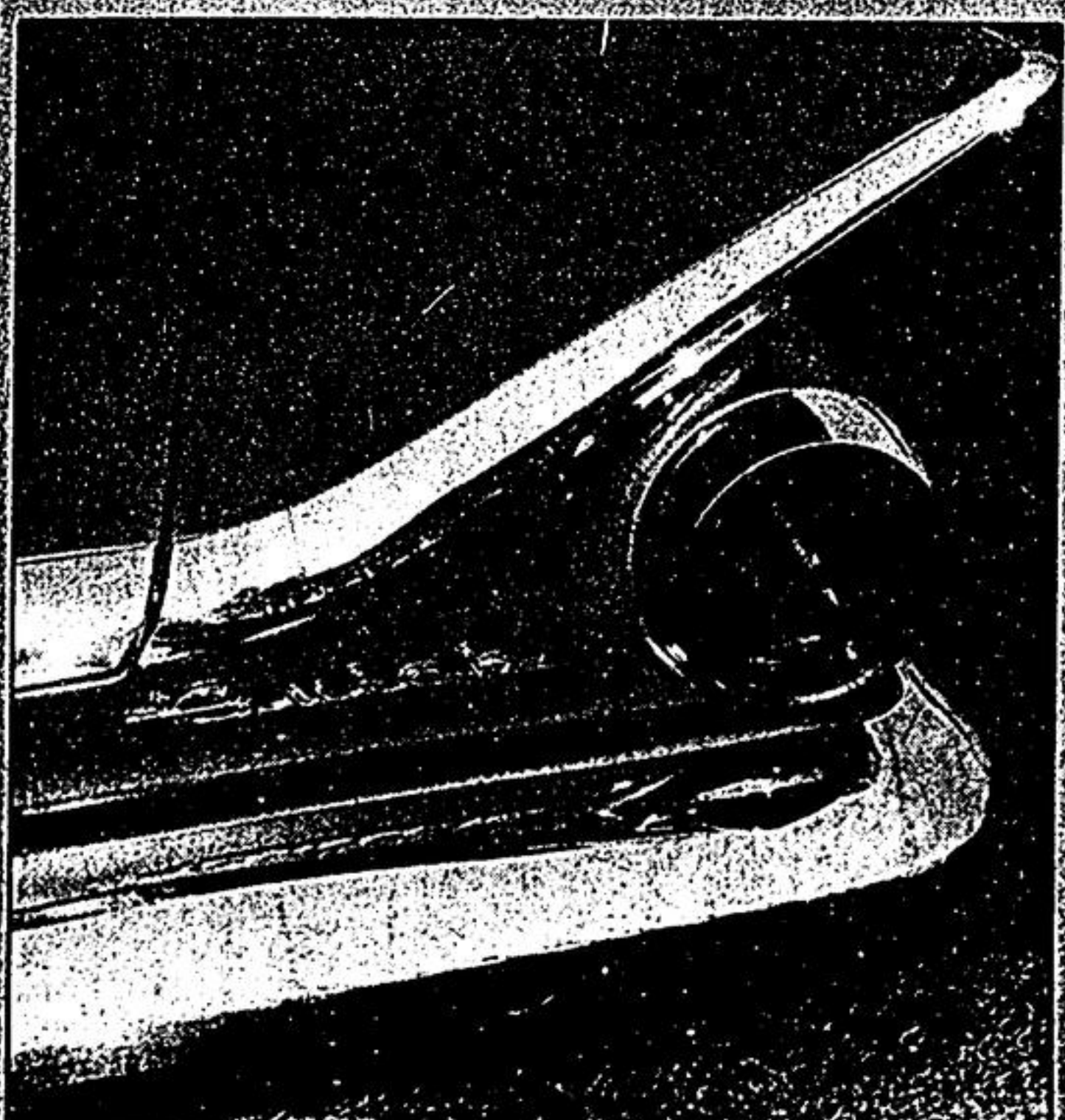


This 1963 Jaguar, (complete with Union Jack) belongs to Bob and Fenella Smith, 19 Albert Street South, Stouffville. It was admired by hundreds.



Stan and Mary McMullen of Claremont brought along their re-assembled 1949 MG TC. Although the car was once a basket case, Stan put it together piece by piece.

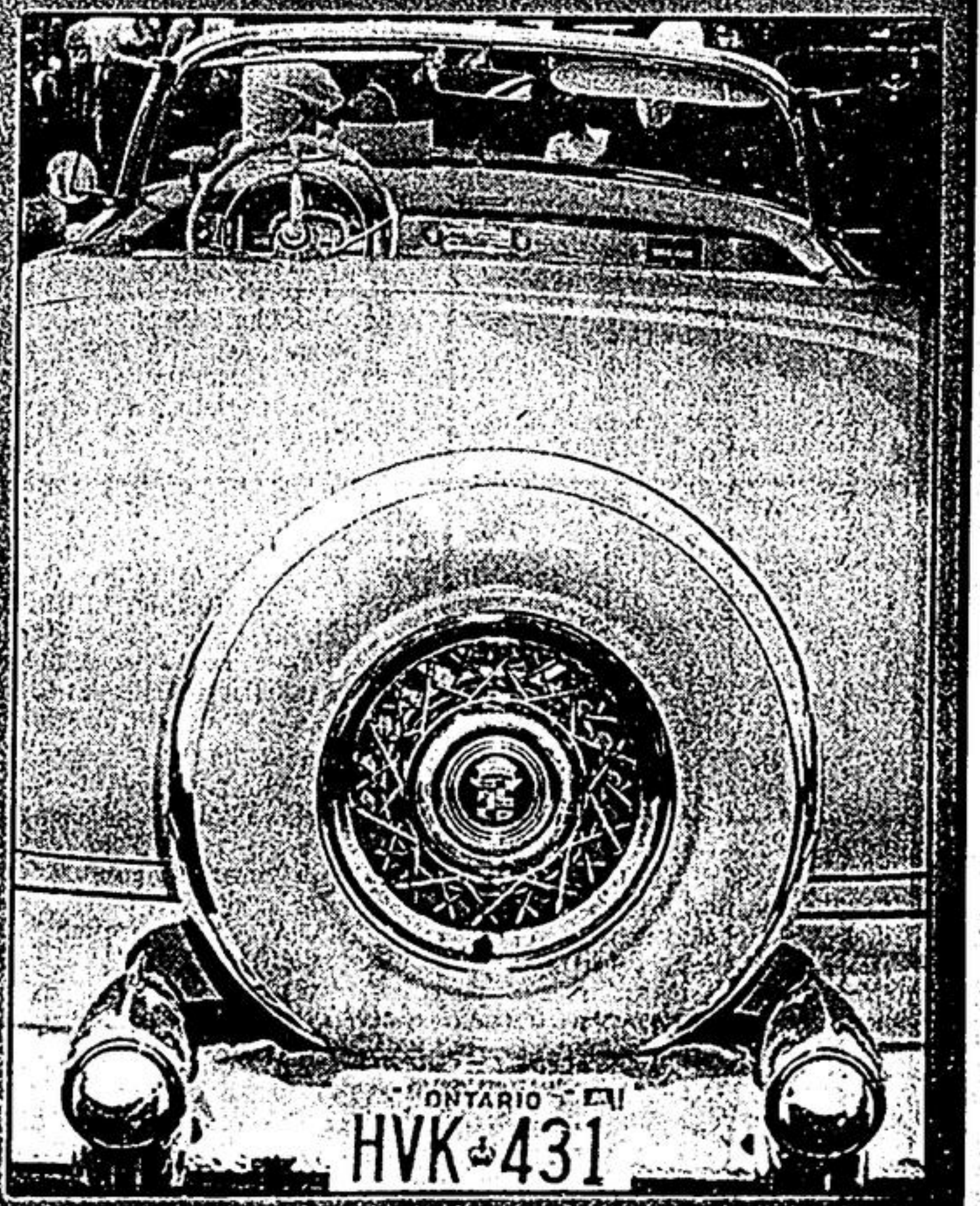
Photos by Jim Thomas



5.4-litre V-8 engine, 100-hp, of the 1954 Cadillac dominated the North American car show.



Larry Barnett of R.R. 1, Claremont, is proud of his eye-catching red and white 1954 Chevrolet BEAR.



A 1953 Cadillac Eldorado, owned by Herchel Gail of Scarborough, is a real beauty.