

**10 ACRES
EXCELLENT LOCATION**
Very desirable Estate Property in the middle of Horse Country. 10 Acres — just 5 miles east of Ballantrae.

\$100,000
Call
640-2213

**PRIVATE SALE
EXECUTIVE TILMAN CIRCLE**
4 Bedroom, all brick, family room with fireplace. Wood panelling, sitting area with bay window in large master bedroom with full ensuite. Neutral decor.
Call 294-6284



Sun beams.
Here's the most beautiful, durable way to let the sun in. Framed in natural cedar, the Lindal Sunroom expands your horizons while conserving energy.

To find out about the Lindal Sunroom or any of our fine cedar homes just send \$6 for our Planbook or drop by soon.

LINDAL CEDAR HOMES
Independently distributed by
CEDARBROOK ENTERPRISES LTD.
151 Nashdene Rd. #42
Scarborough, Ont. M1V 2T3
299-1254

Safeguard
Real Estate Limited Realtor



**FANTASTIC AREA
MULTIPLE ZONED**
3 bdrm, 8 room home, huge lot, centre hall plan, for professional or private home. Earl Atkinson, 471-4900. Safeguard R.E. Limited Rltr.

MIDLAND-STEELLES
A real charmer. 3 bdrm., country style kit., must be seen. Call Bo Jensen, 471-4900. Safeguard R.E. Limited Rltr.

BAYVIEW-STEELLES
Elegant living in prime location. 4 bdrm. Gorgeous fam. rm., beautiful eat-in kit and more. Call Bo Jensen. Safeguard R.E. Limited Rltr.

**HWY. #7/McCOWAN
(CONSUMERS PLAZA)
471-4900**

Century 21
EMERALD ISLE REAL ESTATE LTD.
884-2377



HALF ACRE
1,800 sq. feet, detached, 2 storey brick with single car attached garage, 4 bedrooms, walk out to deck over garage, fall possession. Only \$124,900. To view call Doug Hay 884-2377.

Peter L. Mason
LIMITED REALTOR



**NEW LISTING
CUSTOM BUILT HOME
ON ONE ACRE**
Location Markham, features, 3,400 sq. ft., 4 bed, 3 baths, 3 fireplaces, main floor library, heat pump, cen. air, 5 appliances, cir. oak staircase, pool 18x36, 3 car garage, 2"x6" construction, and much more. Call Robert Cooper, 474-1710, or 474-0635.

JANE MCGIVERN LTD.
REAL ESTATE BROKER

**FOR SALE
JANE MCGIVERN
LTD.**

485-7766

• RESIDENTIAL
• INDUSTRIAL
• COMMERCIAL
AND
• INVESTMENT
REAL ESTATE
SERVICES

**FOR INFORMATION IN YOUR AREA
CALL 485-7766**

NORTH-WEST CORNER OF HWYS. 48 & 47

GALLO
REAL ESTATE LTD.
REALTOR
640-1200



JUST LISTED
Builder's home for discerning executive in beautiful Ballantrae. 3/4 acre of professionally landscaped grounds on cul-de-sac with Betz inground cement pool — fully fenced, backing onto hardwood bush. 2x6 construction with 5 bedrooms, games room, bar, rec room, main floor family room, 2 fireplaces, neutral decor with oak trim throughout, 3 walkouts, triple car garage, sauna and many, many extras. \$319,000.00. Sandra Johnston.



COME AND COMPARE
Custom built, superb construction (2x6) home with courtyard and triple car garage on 2 acres just minutes north of Markham. Features large foyer with circular staircase and skylight. 4 Bedrooms, 3 baths, family room with fireplace, 2 walkouts and much more. Listed at only \$279,500.00. Call now to view.



EXECUTIVE HOME
Spacious home with indoor pool and hot tub. Features 2 fireplaces, 4 walkouts plus 7 box stall barn with tack room and paddocks. All this and more on 5 acres close to town. Karen Croft.

88 ACRES
Located on prestigious Bethesda Side-road, excellent access to the 404. Large frontage on Kennedy Road, several artesian wells, must be seen. Call Earl Elson.

SQUARE 100 ACRES
Large frontage, renovated home sits high with beautiful view. Land is mostly workable, bank barn, driveway, pond. Make an offer, asking \$169,900.00. Bill Burd.

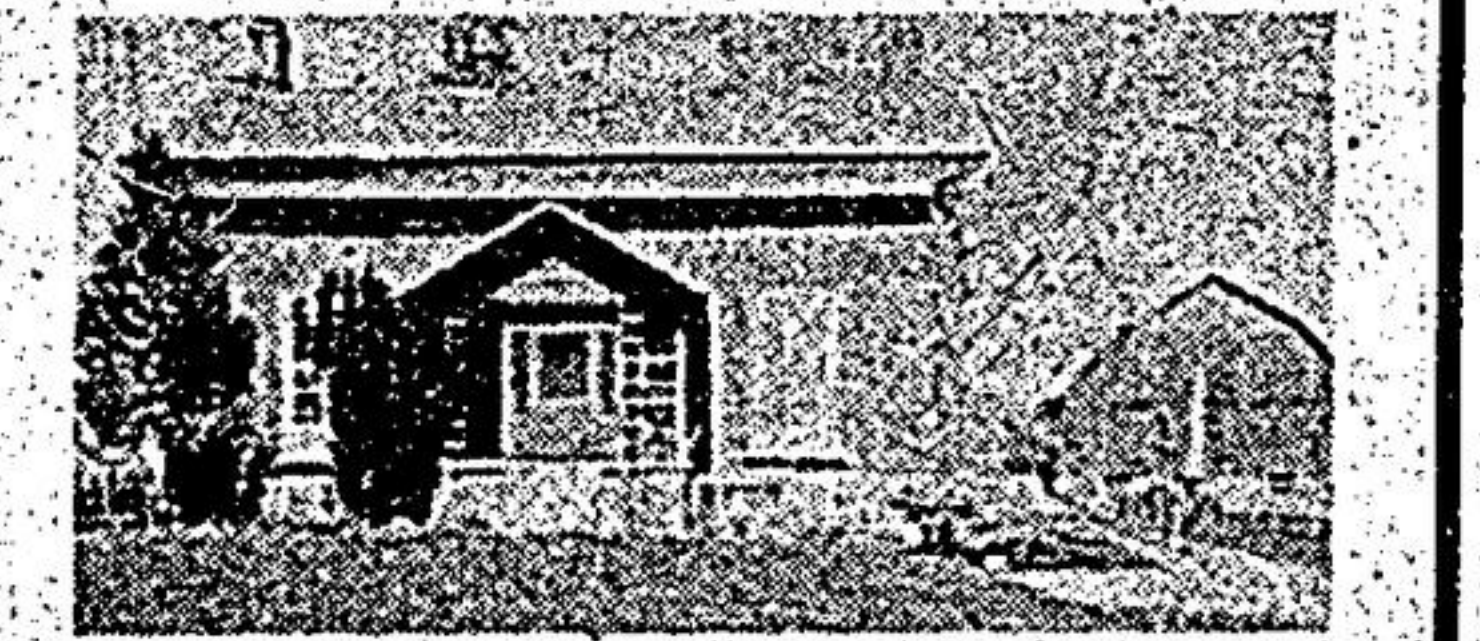
INCOME PROPERTY
Stouffville, 5 plex brick building in excellent condition, spacious 2 bedroom apartments with balconies and parking at rear. Ross Gallo.



HOBBY FARM
Minutes from Stouffville. Spanish style decor built of stucco and brick. Situated on 10 acres with creek and barn. Lovely spacious room, 4 bedrooms and main floor family room with fireplace, also main floor laundry. A pleasure to show. Call Adele Gallo.



NESTLED AMONG THE TREES
4 bedroom brick bungalow secluded in 8.5 acres of hardwood bush, less than 3 miles to town, 2 car garage, main floor laundry, fireplace with heatolator, master bedroom with ensuite. Listed at \$239,000.00. To view call Alah Elson or Earl Elson.



BEAUTIFUL BETHESDA
30 acres with a 6 room Century home in move-in condition, large barn, stream.



DAIRY FARM
Near Stouffville, commuters opportunity, 98 acres, rich sandy loam, 88 workable, 77 tie ups, equipped with milk room, 2 silos, 2 grain storage bins, 4 bedroom home with 3 baths, modern kitchen. Farm in full operation. Asking only \$265,000.00. Call Bill Burd at 640-4063.

Adjoining 97 acre farm used with dairy operation. 85 acres working, 3 bedroom refurbished home, large bank barn 50'x80'. Excellent soil. Farm credit financing arranged on both farms. Asking only \$215,000.00. Call Bill Burd at 640-4063.

10 ACRES
Udora, on paved road, corner property, mostly bush, only \$34,900.00

(Toronto Direct) 640-4151
(Mt. Albert) 473-3600

Farquharson REALTY LIMITED realtor

114 Main Street West, Stouffville, Ontario L0H 1L0
"SERVING OUR COMMUNITY SINCE 1956"

FAMILY SPECIAL — ROOM TO GROW
Spacious 4 bedroom sidesplit on 1/3 acre lot in Uxbridge — hardwood floors, 1 1/2 baths, double garage plus large workshop/studio, cheerful kitchen overlooking family room with fireplace & walkout to garden and inground pool with deck for outdoor entertaining — \$139,900. Jeanine Sheridan 640-4151 or 852-6959.

NATURE LOVER'S DELIGHT
If you have horses & dogs, look no further. 10 acres, 2+ bdrm. country style bungalow. Trout stream & pond, 5 stall horse barn & professionally built dog kennels — \$157,000. Susan Jenkins 640-4151.

BUILD YOUR DREAM HOME
Just off Main Rd., Claremont area, 1/2 acre privacy plus surrounded by scenic countryside. Existing guest cabin with view of lake. Suit log home — \$69,900. Susan Jenkins 640-4151.

COUNTRY LIVING \$112,900.
Stouffville area — spacious 3 bdrm. bungalow, sunken livingroom with fireplace, large family room, walkouts to deck & 80x100 private well landscaped lot. Colleen Brown 640-4151.

WE HAVE MANY OTHER PROPERTIES - GIVE US A CALL
Toronto line 640-1200 · Uxbridge, Pickering & Ajax 649-2266