

Canada's most beautifully crafted silverware

1847 ROGERS BROS. "SILVERWARE"

1/2 PRICE SALE!

SILVERPLATE
5 PIECE PLACESETTING

SALE \$36.00
MANUFACTURERS SUGGESTED LIST \$72.00

YOU SAVE 50%

Sale Ends July 19, 1986

GOLDPLATE
5 PIECE PLACESETTING

SALE \$59.00
MANUFACTURERS SUGGESTED LIST \$118.00

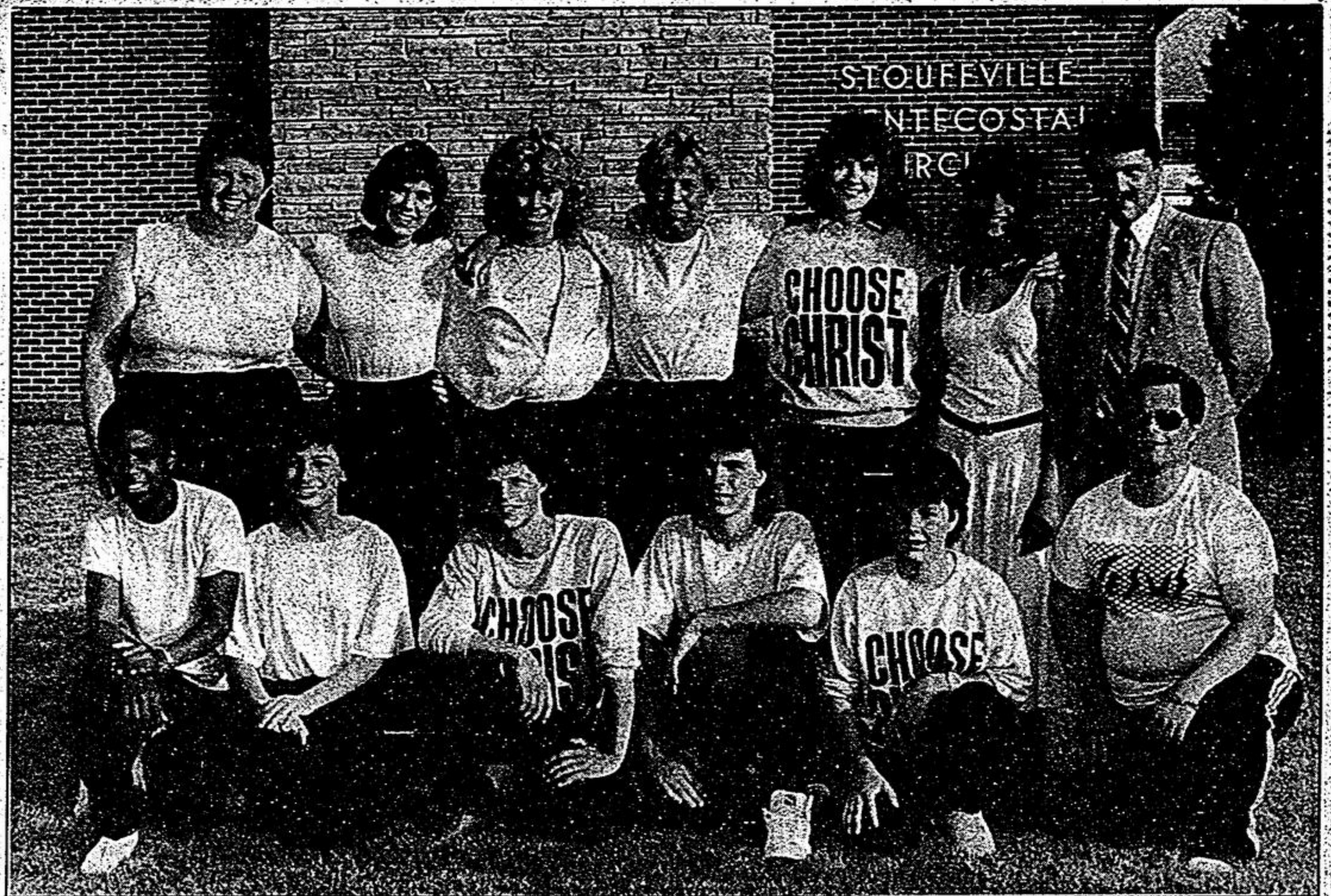
YOU SAVE 50%

Sale Ends July 19, 1986

Wide Selection of Patterns to choose from!

FLAIR available in gold trim and silverplate only
"LOVE and RENAISSANCE" available in gold plate only

AURORA COLLECTIBLES 471-6663
the gift people
Upper Level
Phone & Mail Orders Accepted Near the Bank of Commerce



Drama team to Expo '86

On Monday, a 12-member drama team from Stouffville and Markham Pentecostal Churches, accompanied by Stouffville Youth Director David Moran, left for Vancouver, British Columbia and Expo '86. Once there, they will be joined by 1,000 other Pentecostal youth. The young people's drama team from Stouffville and Markham are pictured here prior to departure. They are: Front Row (left to right)-Robert Brown, (Markham); Carla Cariglia, (Markham); Dale Boreland, (Markham); Stephen Perry, (Markham); Bobbi-Jo DeMerchant, (Stouffville); Steve Breeze, (Markham). Rear Row (left to right)-Joan Prebble, (Markham); Sherry Yeates, (Stouffville); Heather Johannessen, (Stouffville); Rauni Salminen, (Markham); Deana Harris, (Stouffville); Kriss Sommers, (Stouffville); and David Moran, (Stouffville).

-Jim Thomas



Expresses thanks

Dear Jim:

I wish to warmly thank everyone for the honor of being named Whitchurch-Stouffville's "Citizen of the Year".

To Member of Parliament Sinclair Stevens; M.P.P. Greg Sorbara; Regional Chairman Eldred King; Town Mayor Fran Sainsbury; The Tribune, The Sun, the local service clubs and organizations, my appreciation for your acts of kindness.

The print "General Merchant" by Jim Bessy is lovely and the framed cartoon will always be treasured as will the many other gifts and plaques.

Thank you one and all.

Sincerely,
Donald 'Beanie' Lehman,
Boyer Street,
Stouffville

To honor teacher

STOUFFVILLE — The Board of Directors of Stouffville Christian School are hosting a Retirement Luncheon for staff teacher, Mrs Ruth Herbert, Tues., July 29 at 1 p.m., in the Gold Room at Deer Park Inn.

Tickets, (\$12), are available by calling 640-5214; 640-5974 or the Stouffville Christian School, (640-3297).

Persons planning to attend are asked to reply by not later than July 21.

Directory

STOUFFVILLE - On Fri., July 11, the 1986-87 Information Guide, sponsored by the Chamber of Commerce, goes to press.

All clubs, groups and churches should provide correct information pertaining to the current year.

Town businesses are also asked to take note of this deadline.

Call "Always Marketing" at 640-7277 or the Chamber hot line at 640-5993.

The new Guide will be delivered to every home in Whitchurch-Stouffville by the end of this month.

Teen Dance

STOUFFVILLE — The Whitchurch-Stouffville Parks and Recreation Department is holding its first Teen Dance this Friday, (July 11), in the lounge at the Rec. Centre, Ninth Line North.

Young people 13 to 18 years are welcome.

The dance will begin at 8 and conclude at 11:30 p.m. Admission is three dollars.

MARKHAM VILLAGE WOMEN'S CLUB



Markham Village Women's Club offers these exclusive features: Exclusive aerobic circuit training.

A fully equipped universal gym. Double sprung aerobic floor. Exercise bicycles. A children's nursery. Year round sun-tanning facilities. Private showers & change rooms in a beautiful environment. After your work-out, relax in our sauna & our fantastic glass-fronted whirlpool overlooking the gym. We take the time to give you a thorough Fitness Test and a personalized program.

Free 1 WEEK PASS

ENJOY AEROBICS, WEIGHT TRAINING & SPA

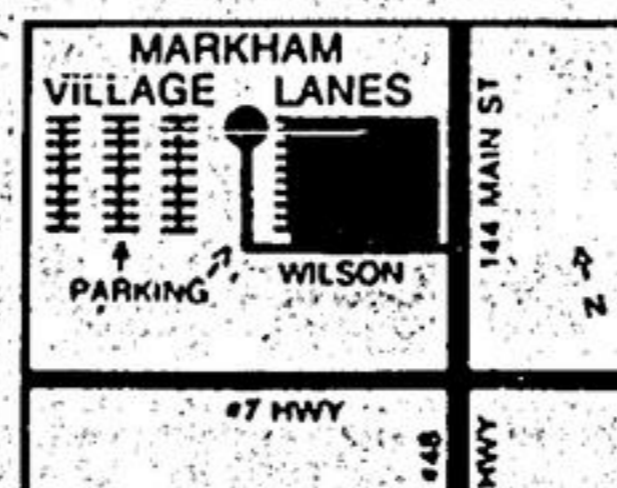
Call for an appointment 294-7764

Offer expires **JULY 31, 86**

Markham Village Lanes Shopping Centre



Early Bird Work-Out
7:30-9 a.m.



Markham Village Women's Club
(Enter at lower level)
144 Main Street North
Markham, Ontario
Telephone 294-7764

Mon.-Fri. 7:30 a.m.-9:00 p.m.
Sat.-Sun. 10:00 a.m.-3:00 p.m.