

Economist/Tribune

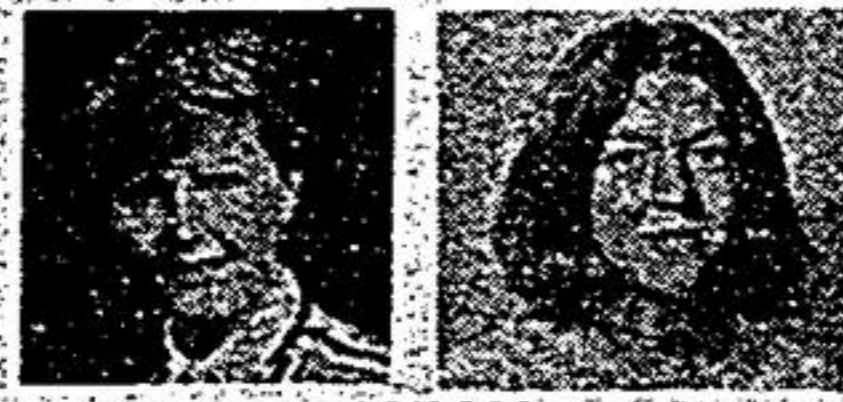
showcase



LILLIAN SIEVANEN



WHEN YOU CARE ENOUGH TO HAVE THE VERY BEST
 Unequaled Conservation — 4 bdrm. inground pool private mature treed lot — walk to mall — Lillian Sievanen 294-1372 Family Trust Corp Realtor.

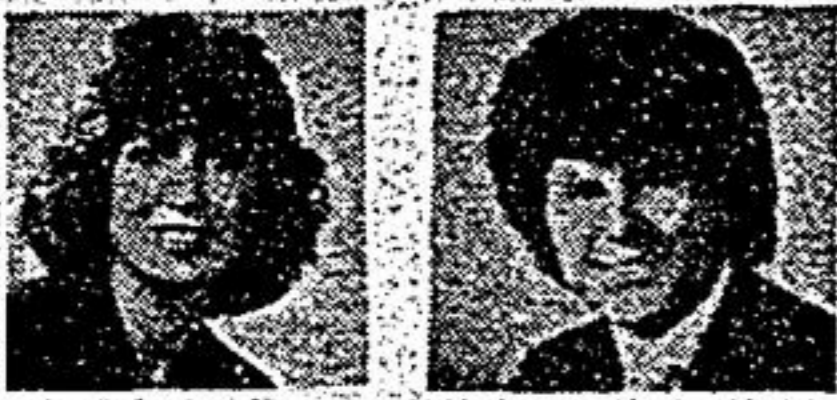


JANICE WARWICK



WANTED!! CONSERVATION AREA

We've got "several buyers" looking for homes in your neighbourhood — let us tell you how valuable your home is today! Linda Norman/Janice Warwick 294-1372.



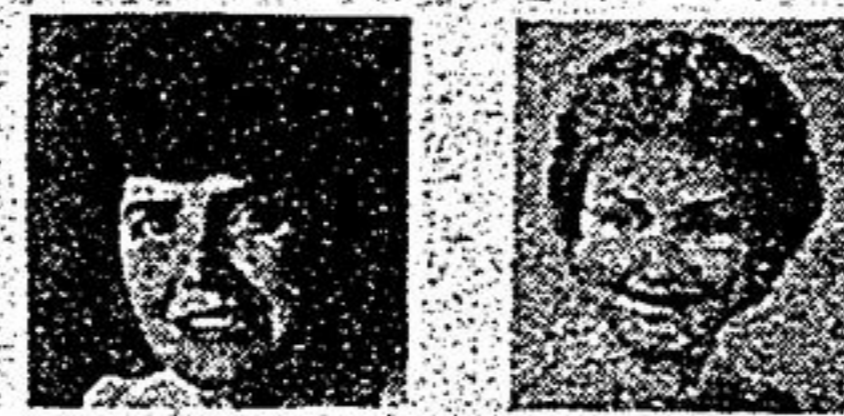
RODEEN ANTROBUS
LARRY RAYMER



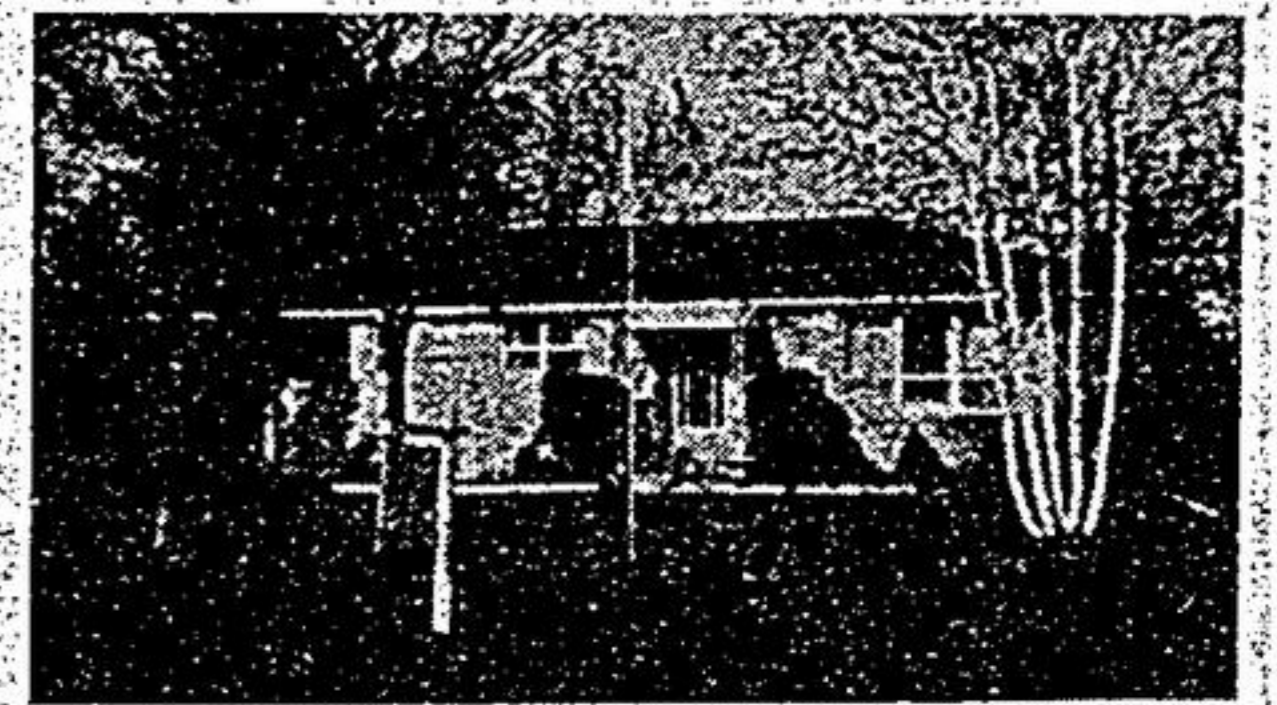
ATTENTION AMBERGLEN SOLD SOLD

- 16 Dewitt Court 55 Radford
- 128 Major Buttons
- 130 Major Buttons
- 152 Major Buttons

To receive top prices call Larry Raymer Rodeen Antrobus 294-1372.



BETTY INNES & PAULA PERCY



SOLD! SOLD! SOLD!

Lovely Bungalow in Markham's most sought after conservation area. Betty Innes - Paula Percy 294-1372.



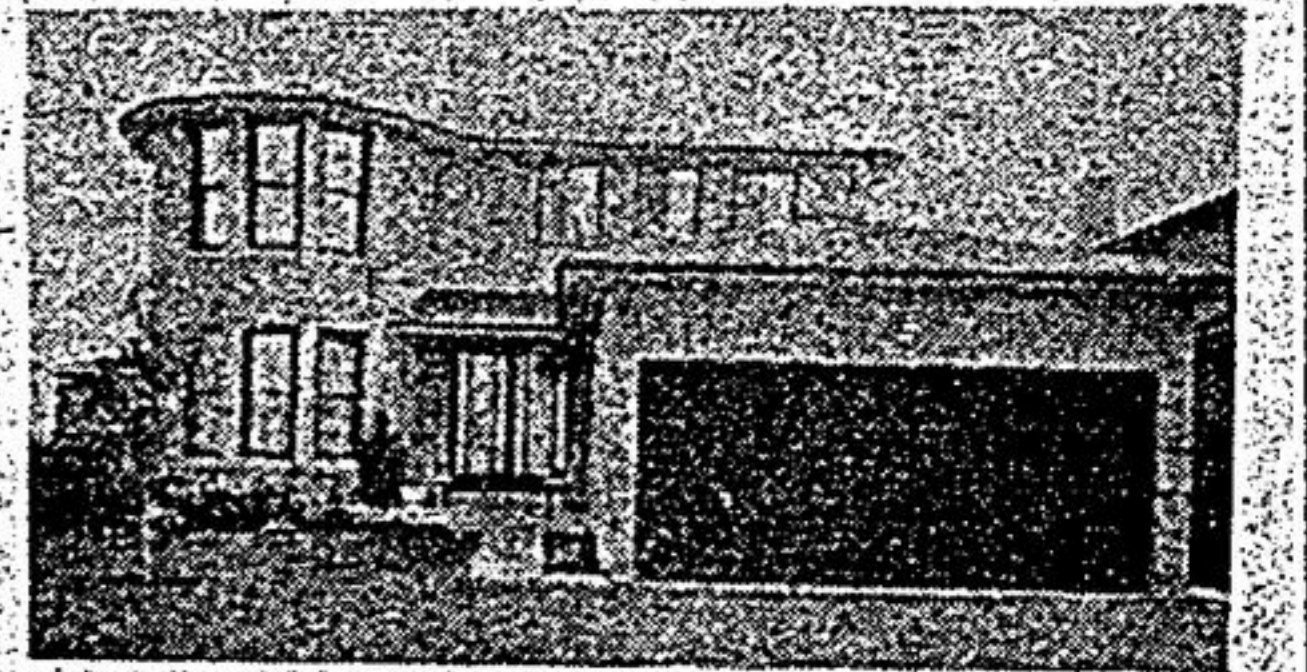
KATHERINE MORGAN



BUY NOW AND SAVE
 Quality Greenpark in prime Markham location. 4 bdrm., 2 w/o's fabulous "greenhouse" kitchen. Terrific Family Home. Katherine Morgan. 294-1372.



LILLIAN SIEVANEN



JUST LISTED

97 Larkin — "Halcourt" beauty with all the upgrades plus central air and vac-dream kitchen with ceramics — huge master bdrm. — cedar fenced Lillian Sievanen 294-1372.



DIANE STEWART NIGH



PRESENTING — UNIONVILLE
 Splendid 4 br., family room overlooks patio, fp., cent. air., 38 ft. rec. rm., main floor laundry, all window coverings. 199,900. Diane Stewart Nigh 294-1372.



DON BRANDT



JUST SOLD!

3 Clendene Court
 20 Eugenia Court
 76 Burwell Crescent
 You too can profit from this continuing strong market. April and May set new records. For a free, no obligation home appraisal call Don Brandt 294-1372 or at home 471-1878.



PAUL TATE



TAKE A LOOK- YOU'LL BUY
 This 3 br., brick home features 1600 sq. ft. of living space, plus premium lot. All for just \$135,900. Paul Tate 294-1372 or Judy Cartwright 439-1660.



PAUL TATE



CHARM WITH ECONOMY

Brick, 3 bdrm., link home & pie-shape lot. See it this weekend open hse. Sun. 2 p.m. - 53 Chichester near Brimley - Steeles. Don't miss it! Paul Tate 294-1372.



PAUL TATE



QUALITY-SIZE LOCATION
 Beautiful, brick, 4 bdrm. home. Choice Markham location. 2500 sq. ft. of Greenpark quality. Won't last long at \$189,900! Paul Tate 294-1372.



LESLIE CAVENDER



COUNTRY CHARM

\$129,900 in Mt. Albert. Enjoy the peace and quiet of country living 3 bdrm., large liv. rm. separate din. rm.; country style kit; huge lot with possible severance. Leslie Cavender 294-1372.