



SUPERB SIDESPLIT

3 bedroom main floor family, fireplace, w/o finished rec. room, large well landscaped yard, home shows like new \$179,900. Central air. Marg Perkins or Don Nelson 294-2990.



TOWN OF KESWICK \$84,900.

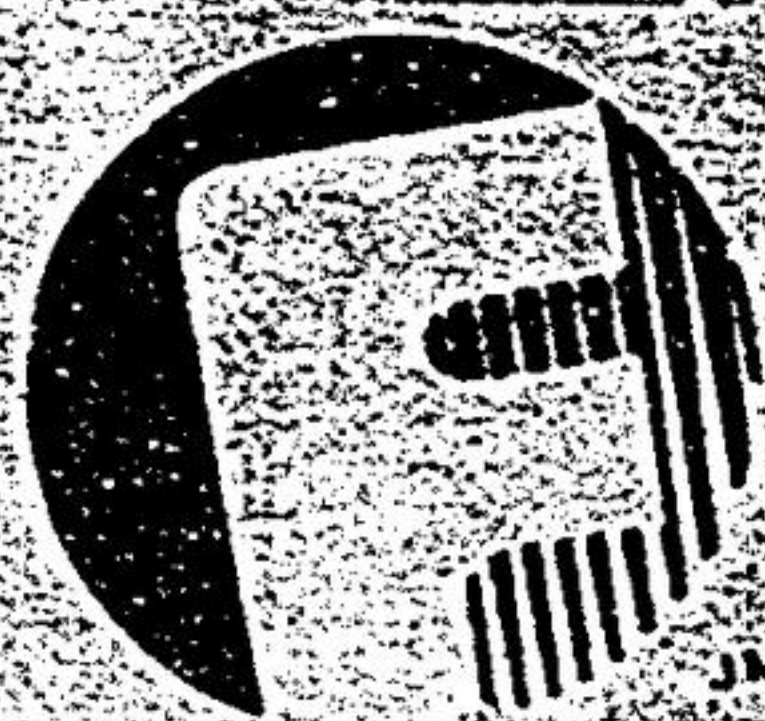
Affordable - 3 yrs. new, 3 bdrm., 2 storey, attached garage on 50 x 150 ft. treed lot. Steps to new plaza and access to Lake Simcoe. Call Nancy Lawson 294-2990.



ESTABLISHED MARKHAM

3+ 2 bedrooms, brick bungalow, breeze-way, walkout to extra large mature treed lot, excellent in-law apt. Call Keith Wallace 294-2990.

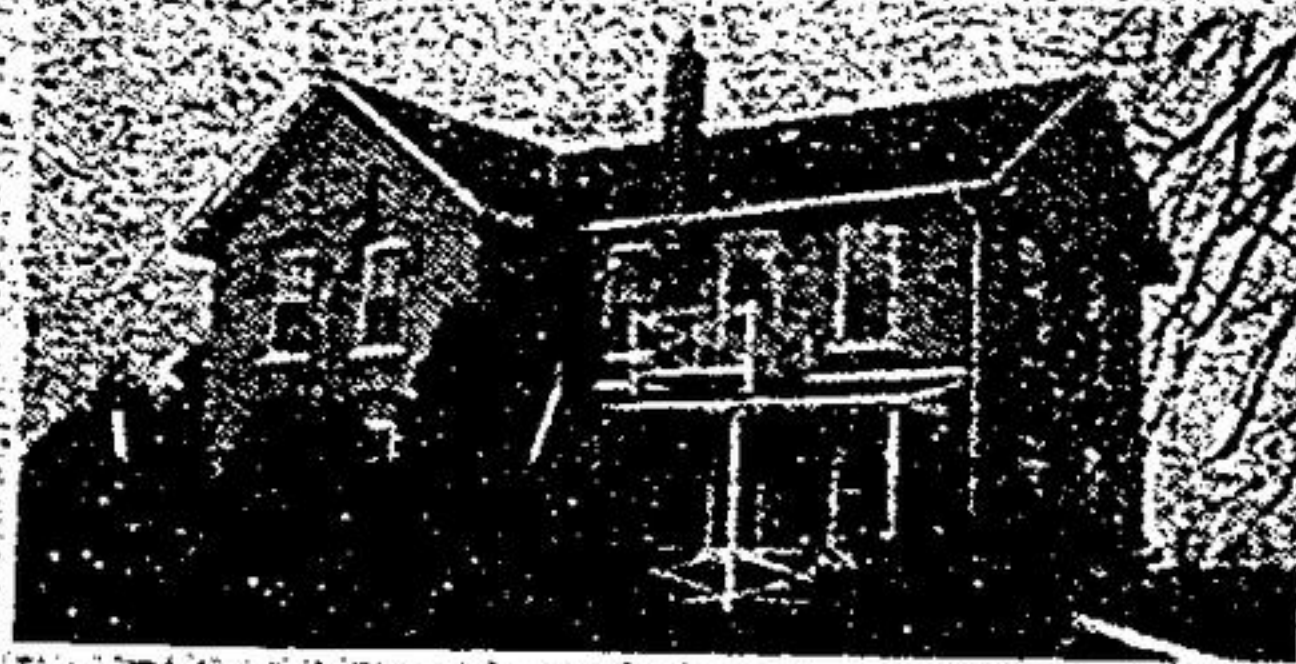
294-2990



(Toronto Direct) 640-4151
(Mt. Albert) 473-3600

Farquharson REALTY LIMITED realtor

114 Main Street West, Stouffville, Ontario L0H 1L0
"SERVING OUR COMMUNITY SINCE 1956"



BALLA-HI FARM

200 acres - 175 acres workable. Century yellow brick, 4 bdrm. updated, 2 large barns, 1 complete pig barn, 40 x 60' drive shed, dryer, 4 bins, 2 road frontages, stream, hardwood bush, severance possibilities. Panoramic view over town of Uxbridge. \$449,000. John Walley 640-4151.

BACK ON THE FARM

Gorgeous century home, completely restored. 30 acres alfalfa, fenced. Large barn. Toronto phone exchange. \$225,000. Susan Jenkins 640-4151.

INCOME POTENTIAL

Uxbridge, quaint home on large lot. Commercial. Private drive & garage. \$99,900. Susan Jenkins 640-4151.

10 ACRES - \$59,900.

Uxbridge - 5 miles west, high & dry. Permits available. Terms available. John Walley 640-4151.

260 ACRES
Uxbridge east. Gently rolling & scenic view over wooded valley & stream. 150 acres workable. Tremendous road frontage. \$250,000. John Walley 640-4151.

BEAUTIFUL CHALK LAKE VALLEY
East of Claremont. 1/2 acre building lot. Treed with maple, oak, birch & pine. Guest cabin, new survey & all permits available. Susan Jenkins 640-4151.

COUNTRY FLAVOUR - 1 ACRE
Sunny bungalow near Goodwood with city phone. Features: open concept, fireplace, small green room, main floor family room with woodstove, w/o to pool & arbor. 4 stall barn with hydro & water. Only \$139,900. Jeannine Sheridan 640-4151 or 640-4101.

RARE SITE

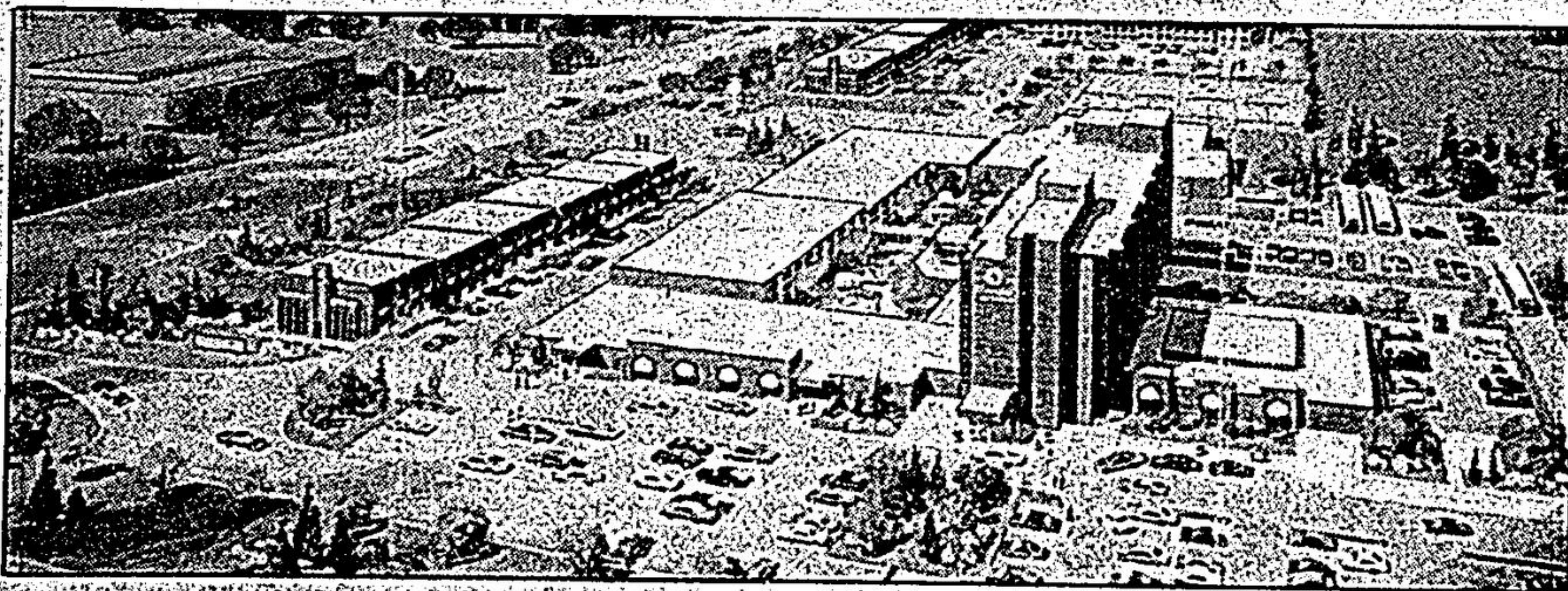
Sheltered, private, 2 acres with pastoral south/west views. Irreplaceable at \$49,900. Dan Farquharson 475-6266.

GORMLEY SIDESPLIT - 1/4 ACRE
Features custom kitchen with ceramic floors & pine ceiling, 3 bdrms., 3 baths, separate dining room with oak floors, family rm. plus rec. rm. with fieldstone fireplace. Asking \$135,000. Colleen Brown 640-4151.

YOU SHOULD KNOW...

That 85.7% of the 21,000 weekly copies of the Economist and Tribune are read by more than one adult. (Source: Kubas & Associates study, Spring 1985. Details on request.)

Office Space For Lease
HIGHWAY 7 and LESLIE ST.



Gorgeous 2-Storey New Office Complex on the West Side of the
NEW SHERATON PARKWAY HOTEL

- Office sizes from 1,100 sq. ft. and up
- Units still available at \$9⁷⁵ Net
- Finished to Suit

Please Call **JOHN H. MAY REALTY LTD.** Realtor

Ask For

Len Shirose

(416) 624-4858



1/2 ACRE PLUS BARN
Gormley location. Financing available. Asking \$69,900. Call Reine Schickedanz 884-0111.



210 ACRE BEEF FARM
Mt. Albert. 4 bdrm. 2-storey immaculate residence, 3 barns, several implement sheds, pool. Only \$695,000.00. Call Reine Schickedanz 884-0111.



ONLY \$79,900
3 bdrm. Preston Lake. Mature lot, lake rights. Easy financing. Call Reine Schickedanz 884-0111.



TALL TREES, CEDAR HEDGES
\$159,900. on picturesque road at Lake Simcoe. Year round 5 B.R., 2 bath house situated close to tennis & golf club. Bring your boat. Joan MacDougall 889-0544.



1 1/2 ACRES AURORA GEORGIAN BRICK
\$295,000. 4 bdrm., 3 baths, main fl. family rm., w/o, 2 firepls., separate dining rm., bay window overlooking beautifully landscaped lot. J. MacDougall 889-0544.



LOTS OF ELBOW RM. IN MT. AALB
\$174,800. Humongous kit., walks out to 1 1/4 ac. Shows like new, loaded with extras, hwd. fls., French doors, main fl. fam. & ldy. rm., fpl. Barb Vansickle 895-4304.