

Economist/Tribune

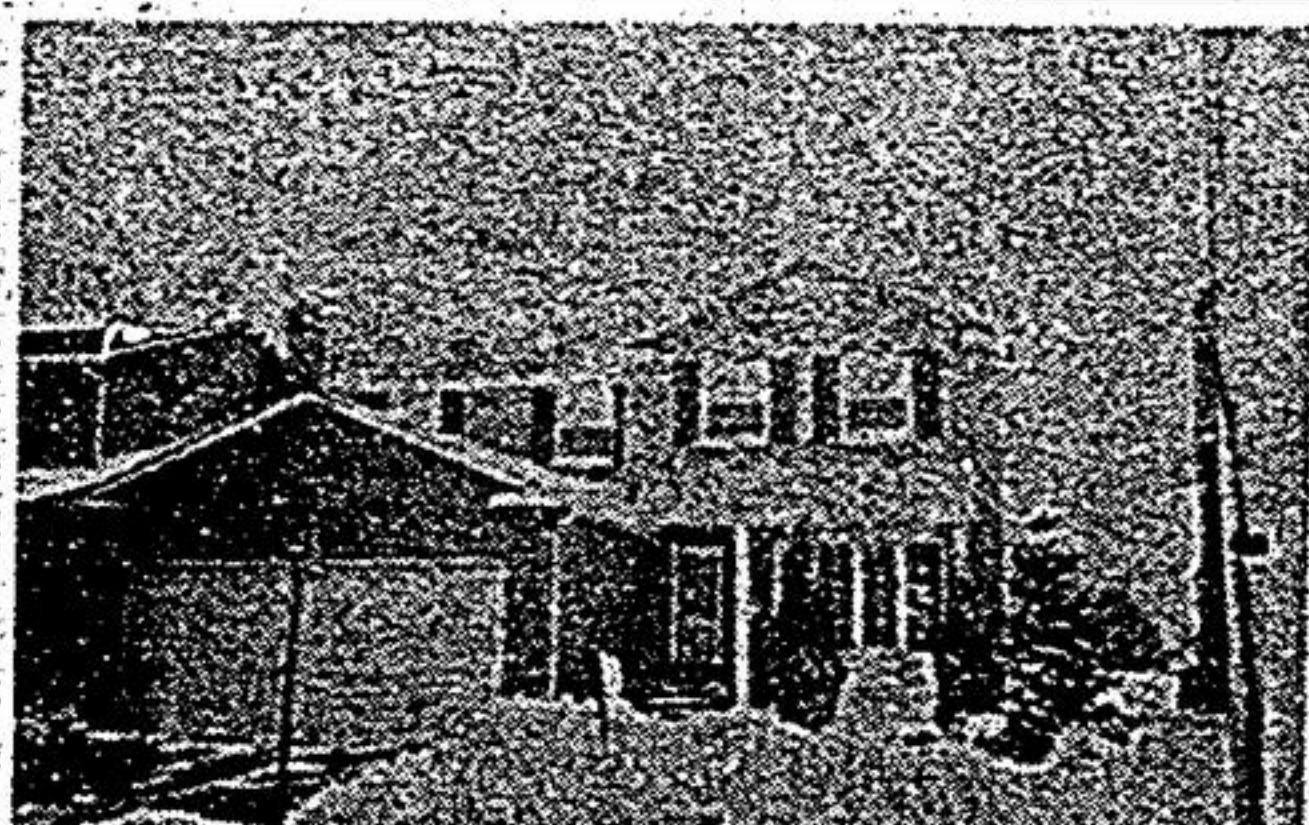
showcase



DONNA CATS



ROYAL LePAGE REAL ESTATE SERVICES LTD. REALTOR



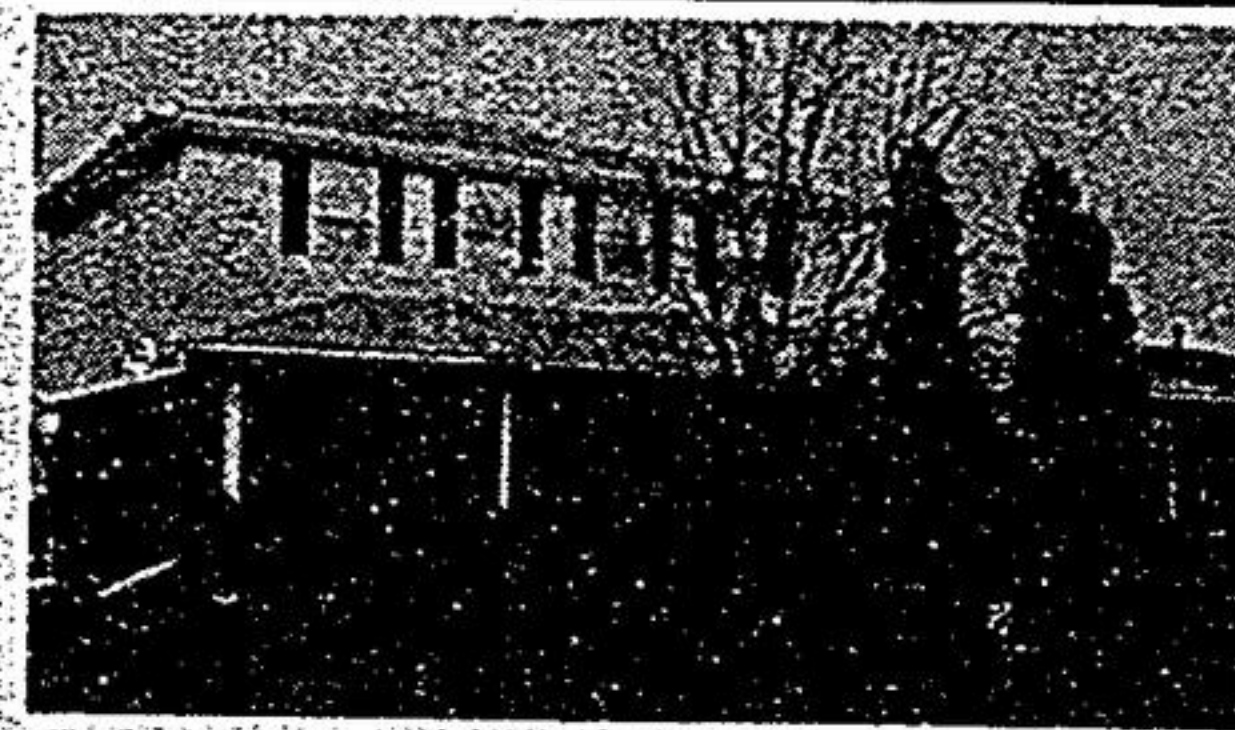
UNIONVILLE 4 BEDROOM 2 STOREY
Main floor family & laundry, fireplace Central air & vac., neutral decor, Hwy. #7 & Village Pkwy. More information call Donna Cats 471-4800, 477-6464.



ANNE RATZ



ROYAL LePAGE REAL ESTATE SERVICES LTD. REALTOR



CONSERVATION AREA
• 4 Bedrooms
• Large Lot
• Inground Pool
• Rec. Rm. - Wet Bar
\$154,900.

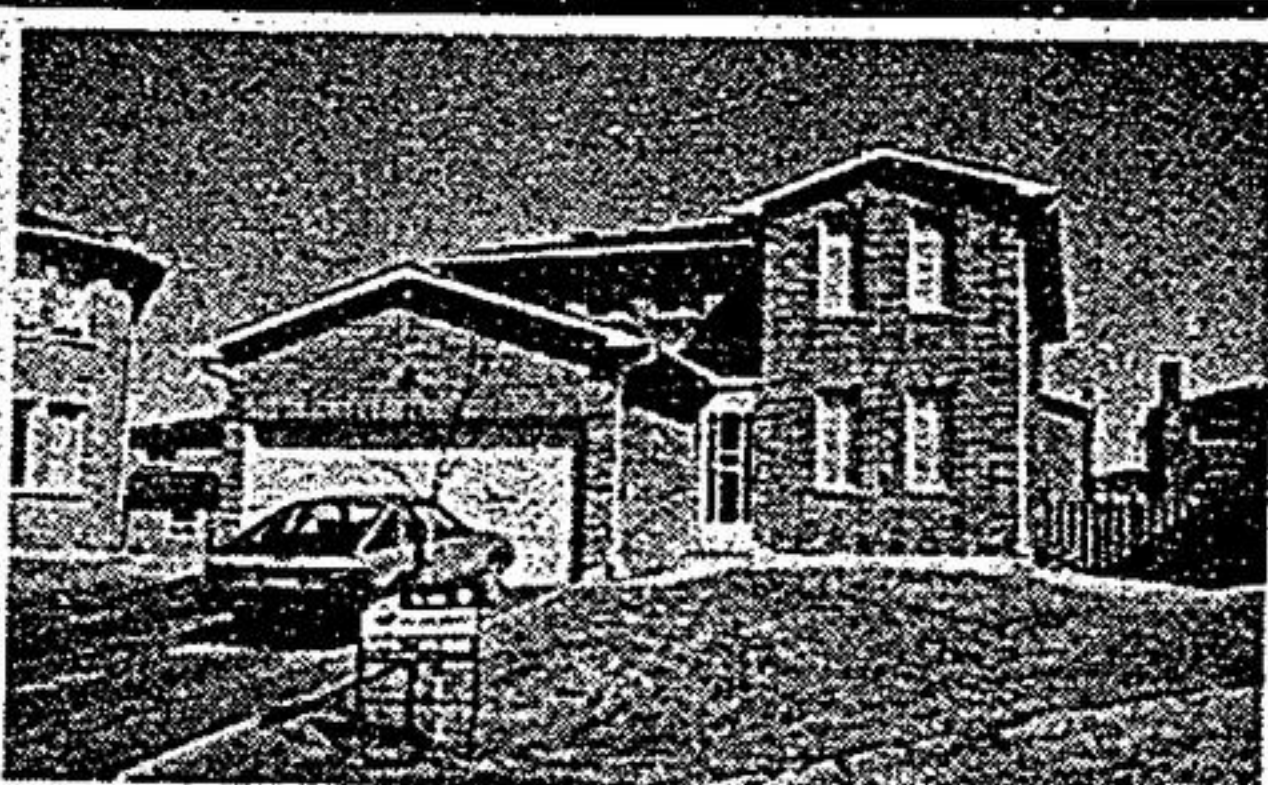
471-4800



MARY JANE SWANSON



MARKVILLE realty ltd. realtor
471-6600



URGENT - MUST BE SOLD
\$174,900. Make offer. Pool size fenced lot on quiet court. Immaculate almost new. Gorgeous kitchen & master suite & extras. Mary Jane Swanson 471-6600, res. 294-7246.



MARKVILLE realty ltd. realtor
471-6600



47 Rosemead Close
A Dream Come True... Vendor
Very happy with the sale and is ready to move on. For quick sale of your home call Joyce Ramer Walker 471-6600.



VERNA HALLWORTH



ROYAL LePAGE REAL ESTATE SERVICES LTD. REALTOR

HOMES WANTED!

HELP!

I have 2 firm buyers
- \$140,000 - \$155,000 Range.
Occupancy - 1 in July

Very Flexible

CALL VERNA HALLWORTH
Office 471-4800
Res. 477-3193



(Toronto Direct) 640-4151
(Mt. Albert) 473-3600

Farquharson REALTY LIMITED realtor

114 Main Street West, Stouffville, Ontario L0H 1L0
"SERVING OUR COMMUNITY SINCE 1956"



IT'S NOW OR NEVER — \$89,900!
Stouffville North — Immaculate Bungalow with Hollywood Kitchen, walk-out to deck; high block basement with woodstove. Won't last! Jim Payne — 640-4151.



LOOKING AT RETIREMENT?
Bungalows are hard to find, especially a 3 + 1 Bedroom, hardwood floors and plaster walls. All this on huge 59' x 165' garden lot in heart of Uxbridge. Asking \$98,500. Call Colleen Brown at 640-4151.

CITY AMENITIES
Just down the 404, Stouffville offer this 1880's 2 1/2 storey featuring stained glass, high ceilings, winding staircase, F.P. in Livingroom, banquet Diningroom, 4 bedrooms plus den. Must be seen. Listed at \$165,000. Call Sharron Brazier at 640-4151.



COUNTRY LIVING — CITY ACCESS
Gormley — 3 br. Sidesplit features custom kitchen, separate dining with oak floors, main floor family room plus finished Rec Room with field-stone fireplace & insert. Situated on 175' deep lot. Asking \$135,900. Colleen Brown — 640-4151.



COLONIAL CHARMER
Owners motivated, jacuzzi, circular oak staircase, sunken family room, oak wainscotting, plus more with the 2 storey on 10 acres with horse barn. \$247,900. John or Peter Walley 640-4151.



Rosedale of Markham!
PRICE: \$279,900.00

- Builder - McClintock
- 4 Bedrooms
- 2 Family Rooms
- Double Garage
- Sunken Living Rm. - Cathedral Ceiling, Fireplace with Heatlator
- Sunken Main Floor Family Rm. Cathedral Ceiling, Stone Fireplace
- Huge Master Bedroom - 6 Piece Ensuite & Studio Room
- Oak Peg Floors in Main Floor Family Rm. and Studio Room
- Separate Solarium off Kitchen with Sliding Door Walk-out to Patio
- Paris Kitchen with Island, Built-in oven, Built-in Stove, Pantry Shelves, Indirect Lighting, Sliding Door Walk-out to Deck
- Main Floor Laundry Rm. off Kitchen with Walk-out to Double Garage with Electric Garage Doors.
- Formal Dining Rm. with Double Doors and Sliding Door Walk-out to Patio
- Two Piece Powder Rm. with Pedestal Sink in Main Entrance.
- Double Spiral Staircase from Upstairs to Basement
- Main Bathroom on Second Floor has Bay Window
- Basement - Full, High, Unspolled
- Energy Efficient Home Air Tight with 2 x 6 Walls with R'40 Insulation
- Enercon Air to Air Heat Exchanger
- Forced Air Gas Furnace
- Electronic Air Cleaner
- Built-In Vacuum System
- Built-In Intercom
- Double Driveway, Walkways and all Patios are done in unistone
- All Drapes
- All Electric Light Fixtures
- Completely Landscaped Lot
- Broadloom where Laid

For further information please call:
Murray or Nancy Lawson
294-2990

YOU SHOULD KNOW...

That 78.8% of Markham/Stouffville adults find the advertising inserts in their Economist/Tribune to be 'very' or 'somewhat' useful. (Source: Kubas & Associates study, Spring 1985; Details on request.)