

# Trombones slide into the notes they play

**EDITOR'S NOTE:** This is the third in a series on the Markham Concert Band.

By JUDI MCINTYRE

One of the easiest instruments to identify in a band is the trombone. This brass instrument is similar to the trumpet, but instead of depressing valves to create the different notes, the trombone has an extendable slide that can increase the length of the instrument's tubing.

The slide has two parallel and stationary inner tubes, and two movable outer tubes. The further out the slide is moved, the lower the notes.

The range of the trombone can actually be increased by attaching a coil of extra tubing placed in the loop of the bell. There are valve trombones made as well. Rob McConnell of the

Boss Brass is an advocate of this style trombone.

The trombone was created in the 15th century as an offspring of the trumpet. Until the 1700s, it was known as a sackbut. They were built in alto, tenor, and bass sizes and the musical parts written accordingly.

The trombones of today differ very little from that time. The most common form made now is the tenor trombone which sounds an octave lower than the trumpet.

This mellow and versatile instrument can be found in every form of orchestration, including brass bands, jazz bands, symphonies and concert bands.

The ladies and gentlemen who make up the trombone section of the Markham Concert Band are indeed talented musicians. They

are described according to their concert set up.

Nick Caesar grew in Granada where he played the steel drum. From there, his musical career included the alto sax, flute, piano, guitar and eventually the trombone. When Nick isn't playing an instrument, he works as a welder as well as driving a moving van.

Allen Hodgson has been playing trombone for about three years. He came through the ranks of the junior and intermediate divisions of the Markham Concert Band. Self-employed, Al is a designer of fire-protection and life-safety systems.

Bruce Poulin who shares a stand with Allen travels from Maple for the weekly practices. Bruce is in his third season with the band and looks after dairy division of Surgain Farms.

Phillip Ozols is the rookie of the trombone section. Phillip attends Markham District High School where he is presently in Grade 10.

Jill Morrison is next in line. Jill moved to Markham last year and teaches instrumental music as well as math and language arts at Franklin Street Public School.

Sitting beside Jill is Pat Marshall. Pat's musical training was on cello, and as there were no string groups available locally, she decided to take up the trombone. Pat works in the project management group of the Bay's computing centre.

Dale Watts is another import from Maple. He has been playing trombone for eight years, six of them with MCB. Dale is head of the purchasing department at York University.

Bob Hilliard hails from Don

Mills. His musical beginnings were in the west. Prior to joining the Markham Concert Band three years ago, Bob was in a musical retirement of 19 years. A general pediatrician, Mr. Bob works at The Hospital for Sick Children.

Elson Kerr is seated next to Bob and has been with the band since is beginnings. Prior to joining the MCB, Elson and Ruth (who will be featured in the saxophone section) played with the Newmarket Citizens' Band. Elson is employed by Texaco as credit manager.

The trombone section and the rest of the Markham Concert Band can next be seen at the Spring Concert on Sunday, April 27, at 3 p.m. at the Markham Theatre. For tickets and information, call 471-4133 or 475-7174.

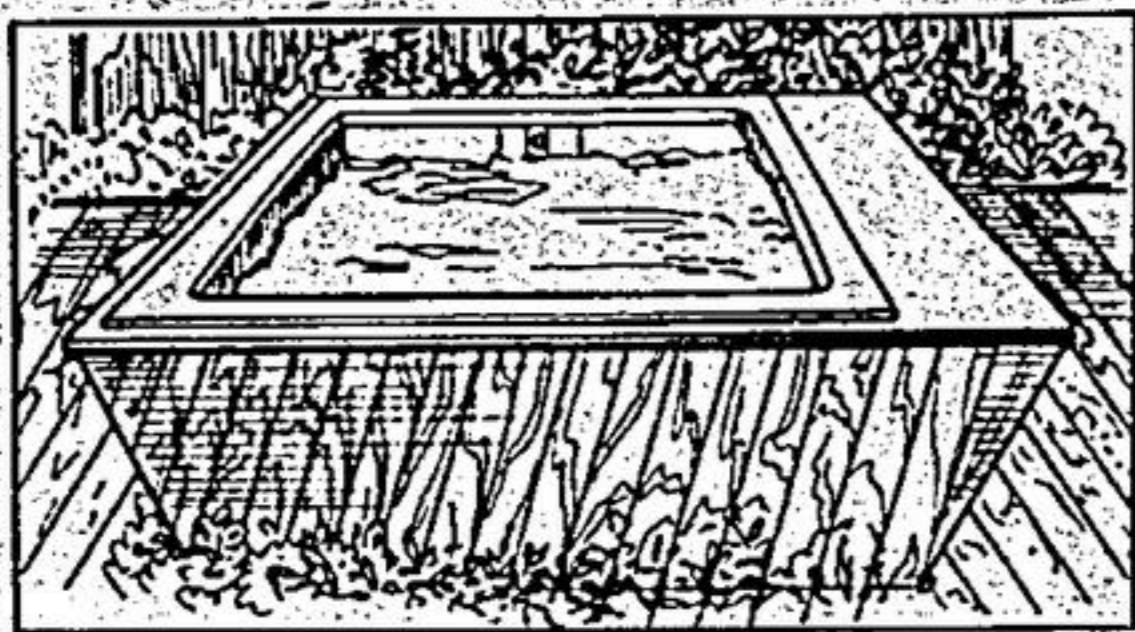
Next week the flute section will be featured.

## MARKHAM POOLS

Come see us at our  
**NEW LOCATION**

"We've got what  
you want!"

Indulge yourself in the  
all-out luxury of our  
custom designs!  
Pools & Spas



**OPENING SPECIAL \$2995<sup>00</sup>** Delivered

Hwy. 48 (1/4 Mile North of 16th Ave.)  
**MARKHAM**

**294-8420**

## THE EASTER BUNNY GIFT BASKET



Overflowing with furry bunnies, baby chicks, and ribbon-bound Easter eggs. The ideal way to show someone special you care.

Only at **PRESENTS OF MIND**...  
Where the Joy of Giving Originates.

**DELIVERY SERVICE**  
(416) 471-6000

**MARKHAM VILLAGE LANES**  
144 MAIN STREET NORTH  
MARKHAM, ONTARIO

**20-50% OFF EVERYTHING IN STOCK**

# Torch Lighting

**SUPER SAVINGS SALE**



**SOLID BRASS  
ARC LAMP**  
SHADES AVAILABLE  
IN GREY & ROSE  
FROM **\$69<sup>95</sup>**

### VANITY STRIPS

CHROME  
BRIGHT BRASS  
ANTIQUE BRASS

18" 3 Light	Spec. <b>14.95</b>
24" 4 Light	Spec. <b>17.99</b>
36" 6 Light	Spec. <b>24.95</b>
48" 8 Light	Spec. <b>29.99</b>

### STRASS CHANDELIER



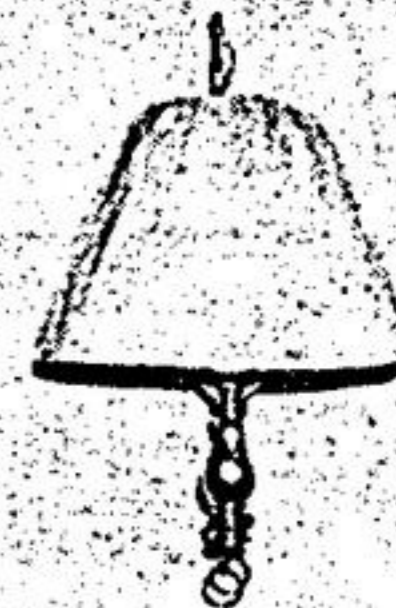
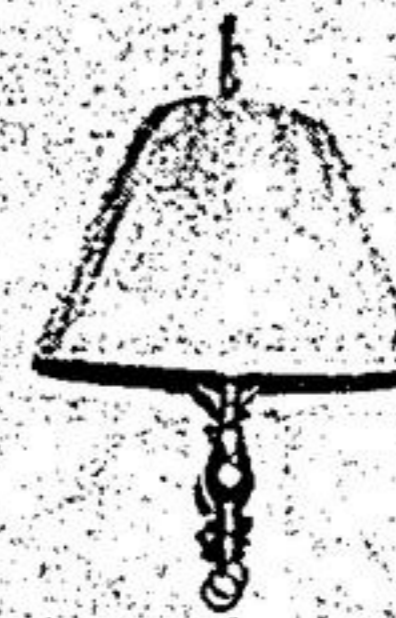
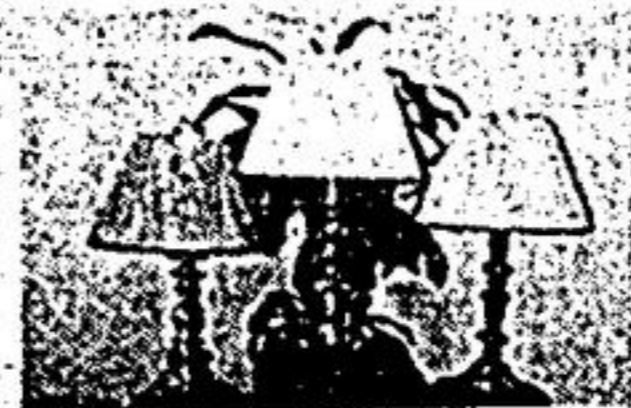
**GUARANTEE:**  
This chandelier has  
STRASS crystal trim

Cascades of SWAROVSKI STRASS crystals and handcut pendants create an inviting elegance for your entrance hallway or dining room. A quiet, refined beauty! Royal Gold finish. Uses 14 up to 60 watt clear candelabra lamps. Measures 20 inches wide, 22 inches high, and 40 inches overall drop.

**WOULD YOU BELIEVE!**  
**\$699<sup>95</sup>**

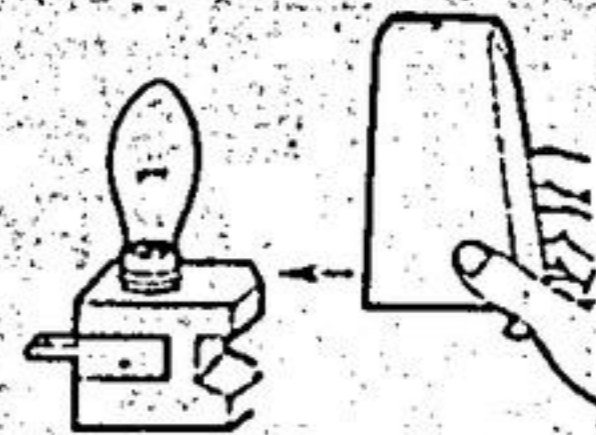
**ONLY  
SIMILAR SAVINGS ON ALL  
"IN STOCK" CRYSTAL**

**SOLID BRASS  
TABLE LAMPS**  
FROM **\$57<sup>95</sup>**

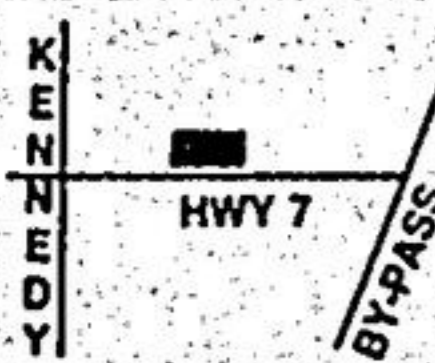


**SOLID BRASS** From  
**SWAG LAMP \$57<sup>95</sup>**

**AUTOMATIC NIGHT LIGHT**  
ON AT DUSK OFF AT DAWN



**SUPER SAVING  
SPECIAL:**  
**\$2<sup>99</sup> ea.**



**4560 HWY. 7 E. OF KENNEDY**

We are located in a new plaza on Hwy. #7, one block east of Kennedy Road, one block west of the Unionville By-pass, on the North side of Hwy. #7.

**479-5267**

SALE EXPIRES MAR. 29/86

**HOURS:**

Mon. - Wed. ....	10-7
Thurs. & Fri. ....	10-9
Sat. ....	10-6



PERSONAL CHEQUES WELCOME