

Economist/Tribune

showcase



**SAVE \$2,000
OFF PRICE
WITH 30 DAY CLOSING**

HURRY!
ONLY 4/3 HOMES LEFT
FAIRGATE HEIGHTS
STOUFFVILLE



F5 Model

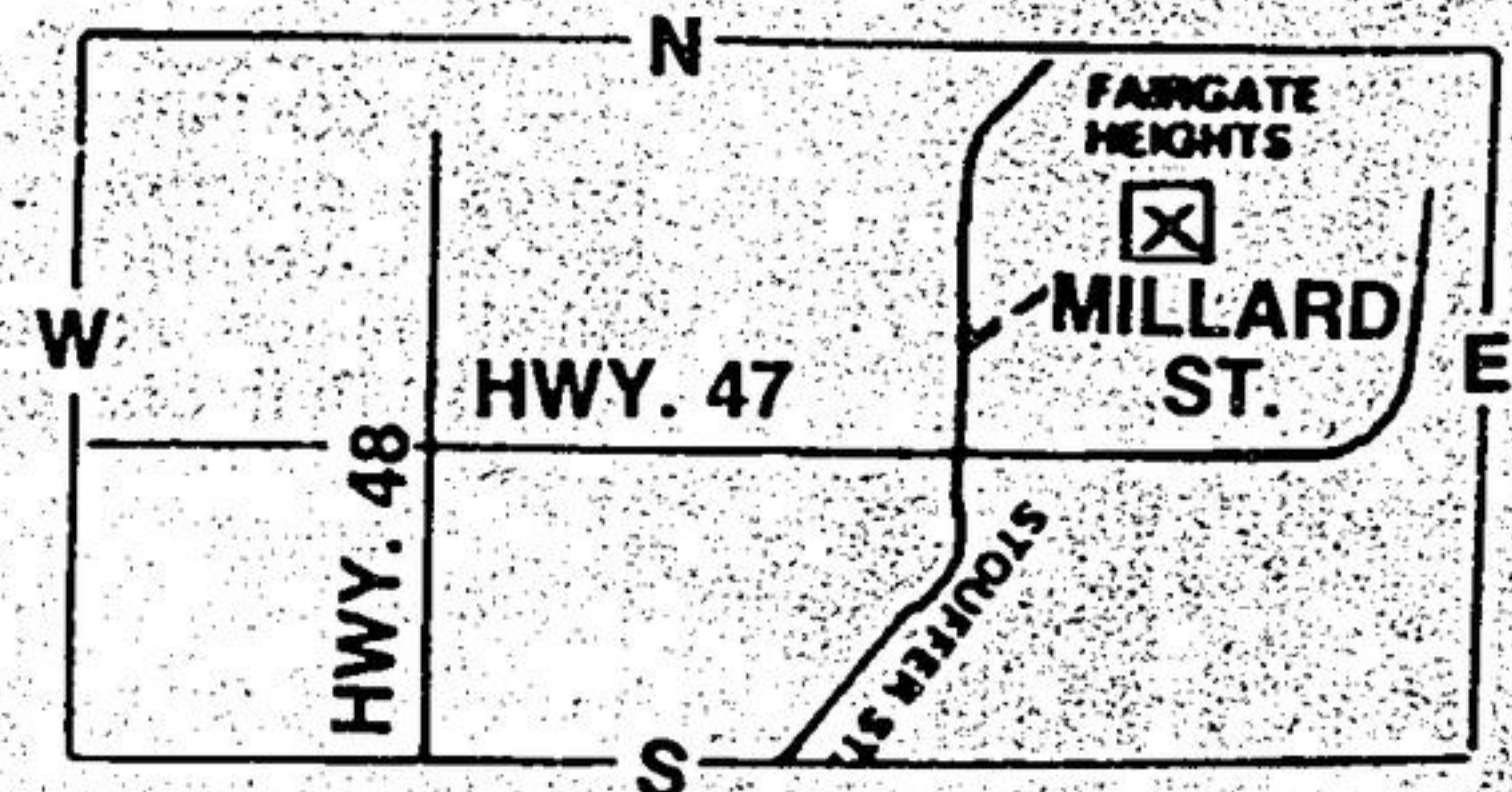
FINISHED MODELS - IMMEDIATE POSSESSION

2 STOREYS ON 50' LOTS:
All situated on quiet crescent
PRICES FROM \$126,900 to \$139,900
1850 sq. ft. to 2305 sq. ft.

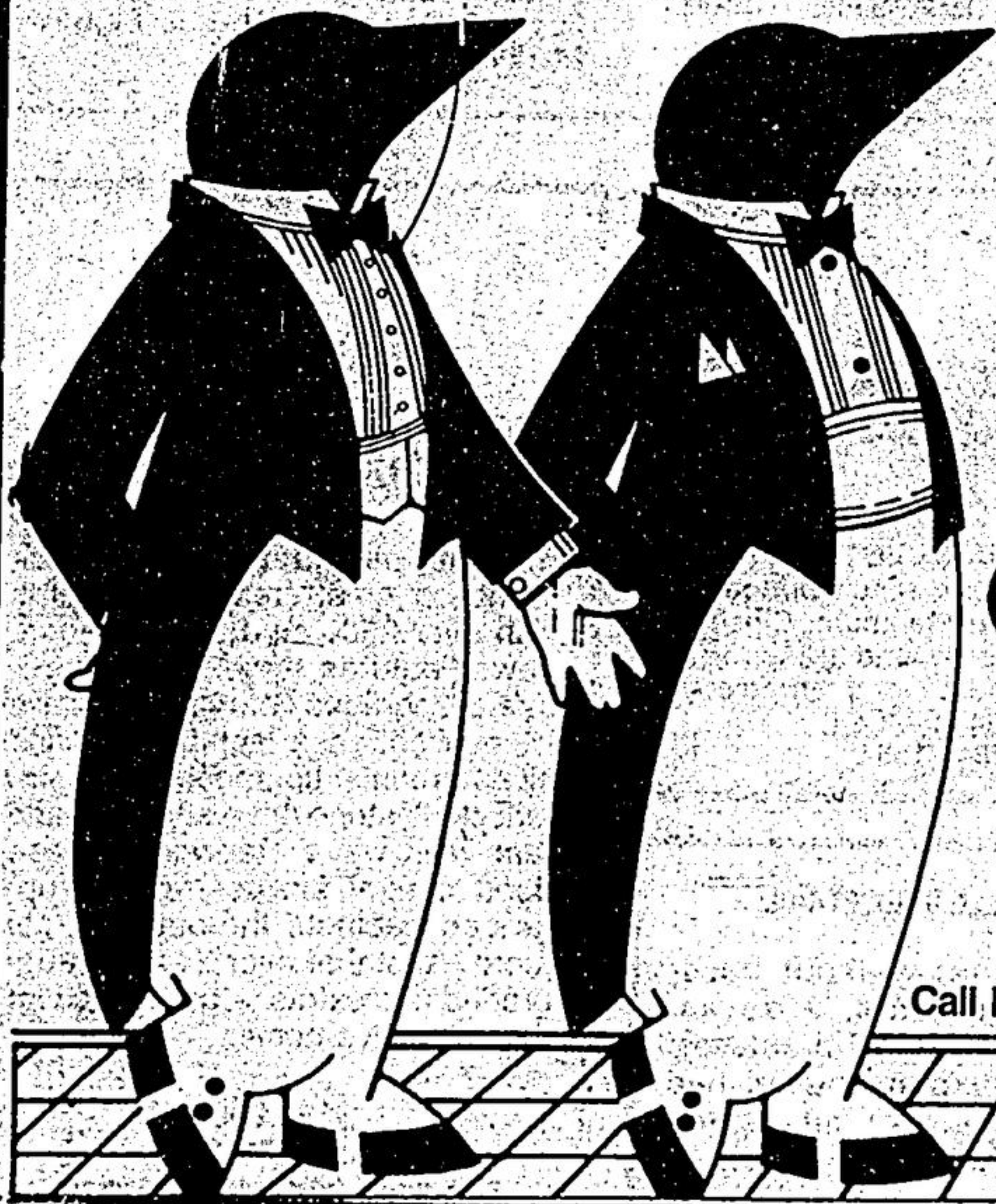
* Clay brick * Aluminum eaves, soffit and fascia * Ceramic entrances and washrooms * Mahogany trim * Oak circular staircases & railings * Floor-to-ceiling brick fireplaces in main floor family room * Basements partitioned * Double car garage plus many more features.

For information call Jenny Ronco or Lina Ronco
640-5710 days or 497-9654 evenings
CANDO REAL ESTATE

11½% mortgage for 3 years
12% mortgage for 5 years



THE ALL NEW PULLOUT REAL ESTATE SECTION OF THE ECONOMIST & SUN/TRIBUNE



Run Your
REAL ESTATE
Announcement
Wednesday
February 12

Get
Saturday
FREE!
Feb. 15

Call Dorothy at 294-2200 or Joan at 640-2100 to help get the most for your advertising dollar.