

Economist/Tribune showcase



RE/MAX

scugog realty ltd.

UXBRIDGE

640-6755

852-6143



LEE WELDON

RE/MAX scugog realty limited is proud to announce the appointment of Lee Weldon as an Associate Broker with the Company. Lee is a life long resident of the area and has enjoyed a distinguished selling career in the Real Estate profession for almost 10 years.

Lee welcomes all contacts from her past and present clients as she looks forward to this new association. RE/MAX scugog realty limited is affiliated with RE/MAX Ontario Limited and RE/MAX of America which has affiliated offices through Canada and the United States.

We are very pleased to welcome Lee and are confident she will contribute to the growth of the RE/MAX organization in our area.

Lee can be contacted at 9 Main Street South, Uxbridge - 852-6143 Toronto Direct 640-6755. Residence Uxbridge 649-2194 or Toronto Direct 640-2770.

Century 21

MARQUIS REALTY LTD.

MEMBER BROKER

ANNOUNCEMENT



JIM CORRIGAN

Chris Mogan and Allen Arnold, Owners of Century 21 Marquis Realty Ltd., are pleased to welcome Mr. Jim Corrigan to our rapidly growing sales team. Jim is an experienced real estate professional, specializing in the sale of new, and resale residential properties in the Uxbridge and Stouffville areas.

Jim decided to join the Marquis team in order to offer his clients

— Our exclusive VIDEO MARKETING SERVICES

— Our exclusive Builders package

— Guaranteed Sales plan

— In house mortgage services

— Interest free down payment loans

— Fully computerized office

Clients may reach Jim at our Markham road office 298-3113 or 852-5297.

Jim will "VIDEO TAPE" your home and GUARANTEE its sale. WHY SETTLE FOR LESS!

COMMERCIAL

FOR SALE - C 2 Highway. Commercial property, fully serviced. Outstanding corner location on Hwy. #2 in Whitby. 100' x 119' with existing building. Ideal for plaza, fast food, automotive sales etc.

Call 294-0459

HOME BUYERS' GUIDE

Use this valuable check list when househunting ...it's a reference guide that will jog your memory!

Asking price	\$190,000	\$138,500	\$109,900	\$115,900	\$91,500
Feasible price					
Cash required					
Assumable mortgage					
Secondary financing					
Monthly payments (including principal, interest & taxes)					
Lot Size	10 acres	59 x 214	1/2 acre	159 x 106	105 x 165
Description	Ranch Bung.	2 storey	Bungalow	Bungalow	1 1/2 storey
Kitchen					
Den	Yes				
Bathrooms	3	3	1	2	1
Living room					
Family room		main floor			
Dining room					
Bedrooms	4+	3	3	3+2	3
Driveway	Circ paved	Dble. paved	Dble.		
Laundry	Main floor	Main floor			
Garage	Dble.	Dble.			
Fireplace	2	1	1	1	1
Pool	Inground C	Inground C	A/Ground V		
Air-conditioning	Central				
Central Vac					
Walkouts	Yes	Yes			
Basement	Finished	Finished	Finished	Finished	Full
Other Features	Barn Paddock Driveshed Pond		Sauna		Commercial potential

If you are thinking of buying or selling, GET THE FACTS. What does a Real Estate Salesperson do for you, what do you look for when you're buying and what is involved in selling your home, what costs are involved, how do we arrange a mortgage? All these questions and more are waiting to be answered at our office. Call for qualified, confidential assistance without obligation.

Countrye Tyme Realty Ltd.

"DON'T KEEP YOUR HOUSE A SECRET... LIST WITH THE COUNTRYE FOLKE."

PHONE

640-5090

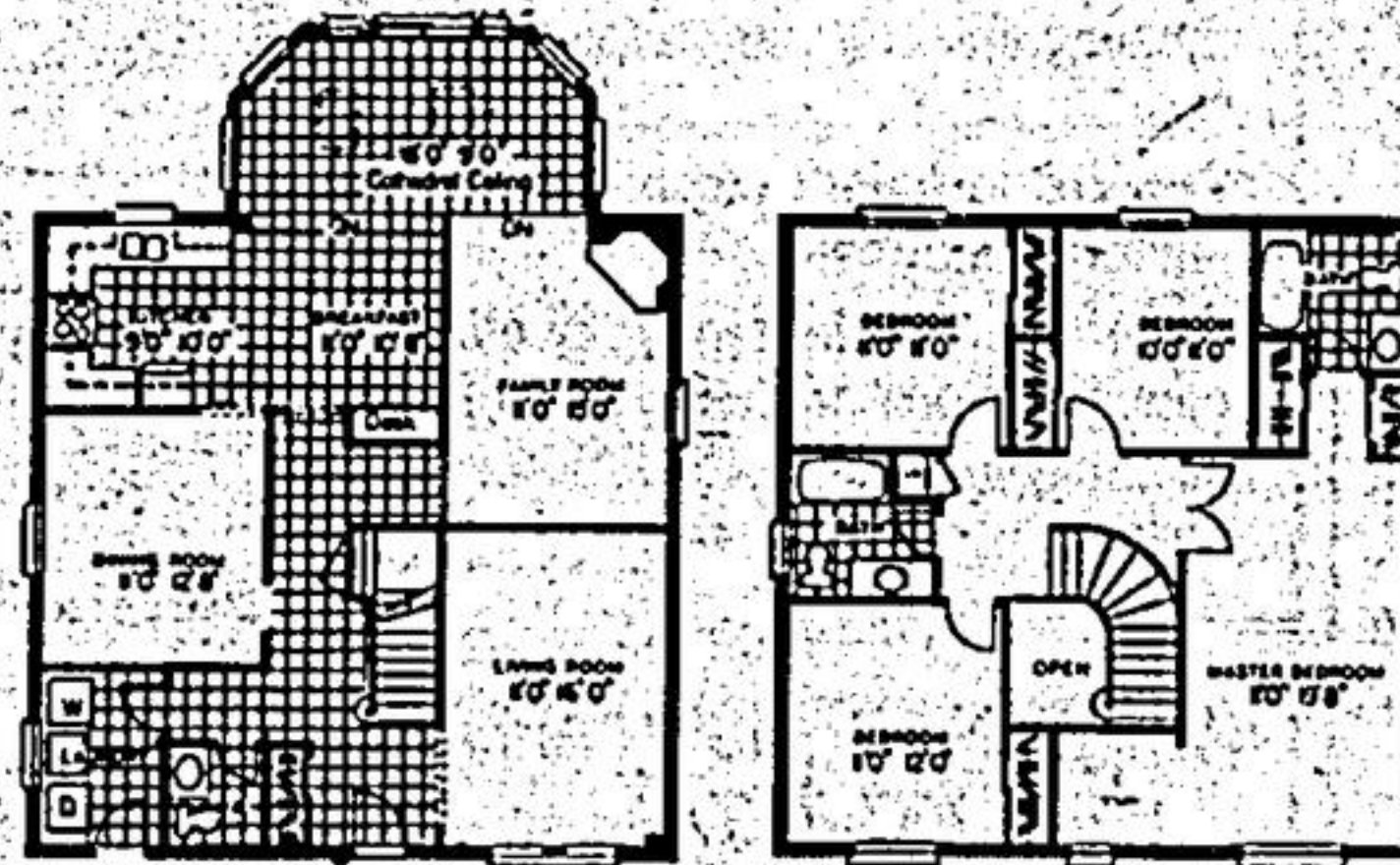
649-5090

ROMARK HOMES 8 HOMES LEFT CUSTOM DESIGN YOUR OWN INTERIOR

PRICES - \$146,900 — \$169,900 — UP TO 2830 SQ. FT.



**ROMARK III
2360 SQ. FT.**



REDESIGNED ENSUITE ROMAN TUB AND STAND IN SHOWER IN THIS MODEL

ROMARK QUALITY FEATURES

- * Genuine burnt clay or calcite brick exterior
- * Aluminum soffits, fascia & eaves
- * Casement windows
- * Greenhouse kitchens
- * Skylights
- * Roman Tubs - ceramic showers
- * Main floor family room
- * Main floor study
- * Main floor laundry wall-to-wall cupboards
- * Two car garage
- * Ceramic tiles in foyer, main & ensuite washrooms
- * Upgraded kitchen cabinets, traditional or European
- * Circular stairs
- * Brass hardware
- * Series 800 Doors or Mahogany
- * Brass Chandelier
- * Coach lamps
- * Door in home from garage

EXCLUSIVE AGENT
RE/MAX EAST REALTY LTD.
TONI SULLIVAN
ASSOCIATE BROKER
OFFICE 291-9988
24 HR. PAGER
245-5544 PAGER ALPHA 91150

SITE HOURS: SAT. & SUN.
1:00 TO 5:00 P.M.
WEEKDAYS BY APPOINTMENT ONLY

