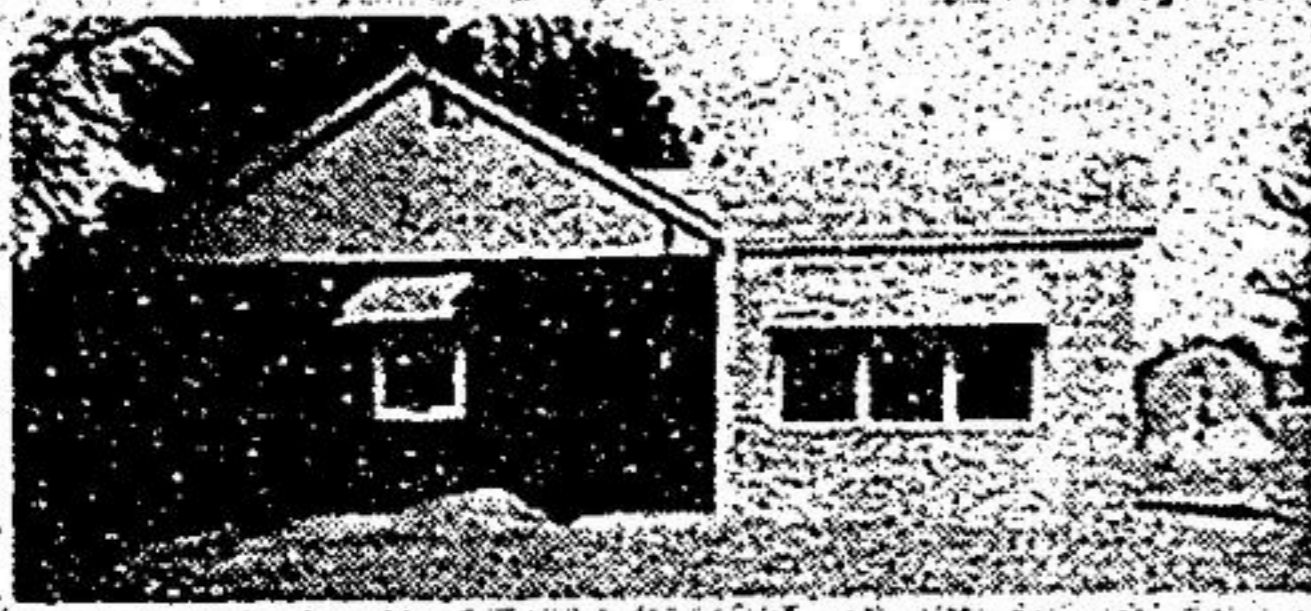


NORTH-WEST CORNER OF HWYS. 48 &amp; 47



"THE GOOD WILL OF THOSE  
WE SERVE IS THE  
FOUNDATION OF OUR  
SUCCESS"

**STARTER OR RETIREMENT HOME**

Just west of Ballantrae, great commuter, situated on almost 1 acre. Spotless 2 bedroom home, single car garage, in area of fine homes. Call Earl Elson or Alan Elson.

**COUNTRY LIVING**

Gorgeous 30 acre parcel with mixed bush, stream. 3 bedroom reconditioned farm house in move-in condition, barn and driveway. Asking \$99,900.00. See this one with Earl Elson or Alan Elson.

**JUST LISTED**

Stouffville area, 3 bdrm. bungalow, large lot, attached garage. Call Earl Elson or Alan Elson.

**WRECKING YARD**

Sunderland, 50 acres plus, property zoned and licenced waiting for an owner. Workshop, sales building, paved road frontage over 2100 ft. Provincial used car dealer's licence available. Call Alan Elson.

**GOOD VALUE**

100 square acres, good productive soil, pond site, barn, driveway plus a newly renovated 3 bdrm. home. Only \$169,900.00. For details call Bill Burd; Res: 640-4063.

**10 ACRES**

Located on Bethesda Sideroad and minutes to town. Building permit available. Asking \$129,900.00. Call Valerie Infurnari.

**FAMILY HOME**

Spotless 2 storey brick home, finished in neutral decor. Very large kitchen, 3 baths, main floor family room with fireplace. April possession. Lynda Hughes.

**HOME ON 10 ACRES**

Custom built, 2 storey, 3 bedrooms, thermopane windows, dual heating system, this home is set high on 10 acres of mostly hardwood bush and has a large workshop. \$139,900.00. Call Earl Elson or Alan Elson.

**2 ACRES**

In area of fine homes and minutes to the 404. Building permit available. Asking \$59,500.00. Ross Gallo.

**COUNTRY ESTATE**

Nestled on 3 country acres in beautifully scenic Bethesda. The home is custom built, walkout basement, 3 bdrms., with master ensuite, floor to ceiling fireplace in family room, large kitchen, woodstove in partially finished basement, pond and artesian well. Call now to view with Ross Gallo.

**YOUR SECRET HIDEAWAY**

Custom built home of Spanish style decor situated on 3 acres with 2 ponds and trout stream. 4 bedrooms, master ensuite and dressing room with walkout to balcony. Kitchen with 25 ft. terrace and many extras. A home of elegance, call to see it today. Adele Gallo.

**EXECUTIVE HOMES**

(A) 4 bedroom 2 storey, spiral oak staircase, greenhouse kitchen, double front doors backing onto greenbelt. Immediate possession possible, Lynda Hughes.  
(b) Spacious 3 or 4 bdrm. sidesplit, double garage, huge country lot, family room with fireplace.

**SOUTH OF UXBRIDGE**

100 acres of sandy loam soil, 40 x 60 barn in good condition and 1 1/2 storey home. \$189,000. Adele Gallo.

**WE HAVE MANY OTHER PROPERTIES - GIVE US A CALL**

Toronto line 640-1200

Uxbridge, Pickering & Ajax 649-2266

**Town Living** 104 Main Street West  
Stouffville, Ontario

Stouffville 640-2225  
Uxbridge 473-2440

**Living Realty Limited**

**JUST LISTED - 10 ACRES**

Only minutes from Stouffville and 404, paved road frontage. Set up for HORSES; includes 2 small insulated and serviced barns with a total of 7 box stalls; 3 bedroom RENOVATED CENTURY HOME, pine floors, stone fireplace, country style kitchen with centre island cooking area and 5 BUILT-IN APPLIANCES. Only \$174,900.

Call Tom Stephenson 640-2225

**THE TOWN AND COUNTRY  
SPECIALISTS**

GERRY

**Meharg**  
LTD  
REALTOR

SPECIALIZING IN THE "SMALL TOWN - COUNTRY" LIFESTYLE!

**2 1/2 ACRES - UXBRIDGE**

Lookout Point - See Blue Mountain, Lake Simcoe & Toronto skylights, high on a hill overlooking Town of Uxbridge. Custom, quality built home; 4 bds., lge. fam. rm. with billiard table, 2 fireplaces. Many extras. Asking \$189,900. To view call JOANNE KAY. Off. 640-3131. Res. 640-1942.

**MARKHAM - PICTURE PERFECT**

Renovated 150 yr. old farmhouse on edge of Markham village. Separate dining, rec. room with antique bar & stone fireplace. Sauna, 4 bds., oversized 2 car garage, mature trees. Call Hank DeGroot. Off. 640-3131. Res. 640-3948.

**VICTORIA SQUARE - 1/3 ACRE**

Cozy, 3 br., 1 1/2 storey, 26' living rm. with fireplace insert, separate dining with walkout to party size deck. Mature trees. Landscaped, pool size yard. Call Hank DeGroot. Off. 640-3131. Res. 640-3948.

**1.5 ACRES \$134,900.**

Spacious sidesplit 10 minutes N. of Claremont. 4 bds. +, large fam. rm. with woodstove, laundry rm., 1 1/2 car garage. Beautifully landscaped - fruit trees. To view call Brian Meharg. Off. 640-3131. Res. 640-5000.

**SCENIC 10 ACRES**

North Claremont - Spacious 3 + 1 br. bungalow, fenced pasture, finished rec. room with woodstove, large eat-in kitchen. \$144,900. Call Diane Davis. Off. 640-3131. Res. 640-3587.

**BUILDING LOTS**

— 2.25 Acres - 5 Minutes NE Uxbridge - \$42,900.  
— 47.5 Acres - 5 minutes NE Mt. Albert - \$74,000  
— 3 x 10 acres - Scenic Estate Lots - Ballantrae - \$129,000.  
— 85 acres - North Uxbridge - \$59,900.  
**WE HAVE MANY OTHER BUILDING LOTS. CALL BRIAN MEHARG. OFF. 640-3131. RES. 640-5000**

**LOOKING FOR A PLACE IN THE COUNTRY?**

How about 10 acres, 4 br. bungalow, fireplace, huge fam. rm., double garage, 10 stall barn with loft, paddocks, pond? All this only 1/2 hr. from city limits. Under \$150,000. Call Hank DeGroot. Off. 640-3131. Res. 640-3948.

**STOUFFVILLE - BRICK 2 1/2 STOREY**

Gracious, older home. Hardwood floors, leaded glass windows, original trim, loft with 2 pc. bath. Deck over garage. Prime location. Must be seen. Call Hank DeGroot. Off. 640-3131. Res. 640-3948.

**JUST E. OF STOUFFVILLE**

Build your dream home & horse barn or grow some nursery trees on your own acreage. Large frontage on paved road. Asking \$89,500. Call Conny or Frank Hippmann. Off. 640-3131. Res. 640-1149.

**COMMERCIAL HWY. 48**

5.7 acres commercial, 5 acres rural with potential for industrial. 7 miles north of Markham. 6,000 sq. ft. block bldg. Call Dennis Irwin. Off. 640-2600. Res. 852-5009.

**COMMERCIAL - HWY. 48**

Excellent opportunity for small business. Approx. 2,400 sq. ft. shop with upper loft - heat & hydro - 3 + 1 br. bungalow - large living, fam. rm. with stone f/place, central air, sunroom. Full, fenced rear yard with 20 x 40' inground pool. Priced to sell. Dennis Irwin Off. 640-2600. Res. 852-5009.

**REDUCED \$6,000.**

Beautifully finished 3 br. sidesplit on large country lot southwest of Uxbridge. Large living; eat-in kitchen, f/place in fam. rm., large master with ensuite, walkout from dining, 2 car garage. Close access to paved road for excellent commuting to 404 & Toronto. Call now. Dennis Irwin. Off. 640-2600. Res. 852-5009.

**26 ACRES WITH BUSH**

3 miles to Uxbridge - Possible pond site. Approx. 14 acres open - balance mixed bush. Priced to sell @ \$59,900. Call Dennis Irwin. Off. 640-2600. Res. 852-5009.

**30 ACRES - BALLANTRAE**

15 minutes N. Markham. Ideal property for horse farm. Minutes to Hwy. 404. Permits available. Asking \$149,000. Call Brian Meharg. Off. 640-3131. Res. 640-5000.

**NORTHWEST MT. ALBERT**

Reduced to Sell - 10 acres, all trees. Future potential. \$24,900. Hank DeGroot. Off. 640-3131. Res. 640-3948.